



CONTACT INFORMATION

Mining Records Curator
Arizona Geological Survey
1520 West Adams St.
Phoenix, AZ 85007
602-771-1601
<http://www.azgs.az.gov>
inquiries@azgs.az.gov

The following file is part of the

Arizona Department of Mines and Mineral Resources Mining Collection

ACCESS STATEMENT

These digitized collections are accessible for purposes of education and research. We have indicated what we know about copyright and rights of privacy, publicity, or trademark. Due to the nature of archival collections, we are not always able to identify this information. We are eager to hear from any rights owners, so that we may obtain accurate information. Upon request, we will remove material from public view while we address a rights issue.

CONSTRAINTS STATEMENT

The Arizona Geological Survey does not claim to control all rights for all materials in its collection. These rights include, but are not limited to: copyright, privacy rights, and cultural protection rights. The User hereby assumes all responsibility for obtaining any rights to use the material in excess of "fair use."

The Survey makes no intellectual property claims to the products created by individual authors in the manuscript collections, except when the author deeded those rights to the Survey or when those authors were employed by the State of Arizona and created intellectual products as a function of their official duties. The Survey does maintain property rights to the physical and digital representations of the works.

QUALITY STATEMENT

The Arizona Geological Survey is not responsible for the accuracy of the records, information, or opinions that may be contained in the files. The Survey collects, catalogs, and archives data on mineral properties regardless of its views of the veracity or accuracy of those data.

PRINTED: 11-27-2006

ARIZONA DEPARTMENT OF MINES AND MINERAL RESOURCES AZMILS DATA

PRIMARY NAME: RED ROVER

ALTERNATE NAMES:

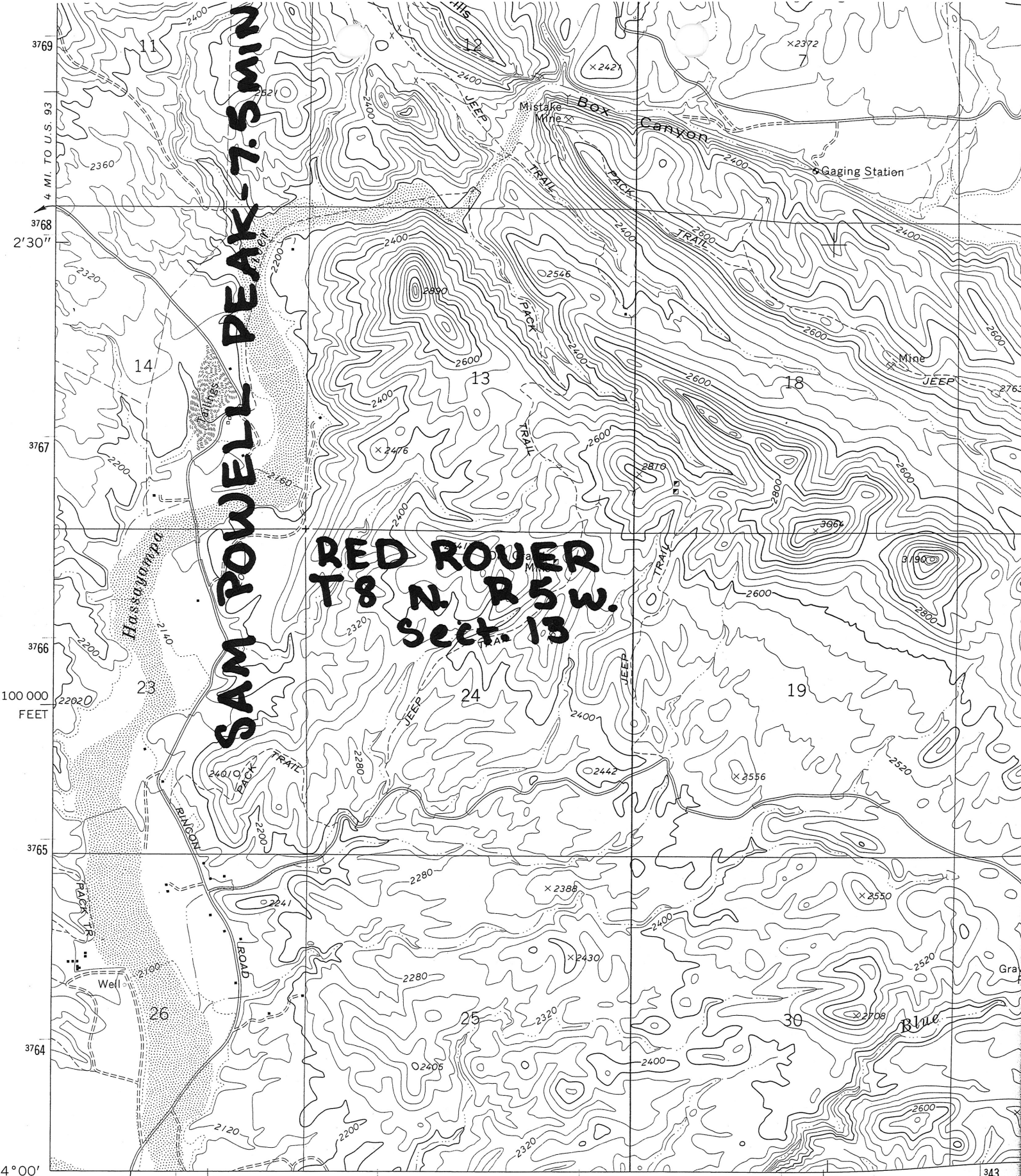
YAVAPAI COUNTY MILS NUMBER: 332A

LOCATION: TOWNSHIP 8 N RANGE 5 W SECTION 13 QUARTER NW
LATITUDE: N 34DEG 02MIN 25SEC LONGITUDE: W 112DEG 44MIN 05SEC
TOPO MAP NAME: SAM POWELL PEAK - 7.5 MIN

CURRENT STATUS: EXP PROSPECT

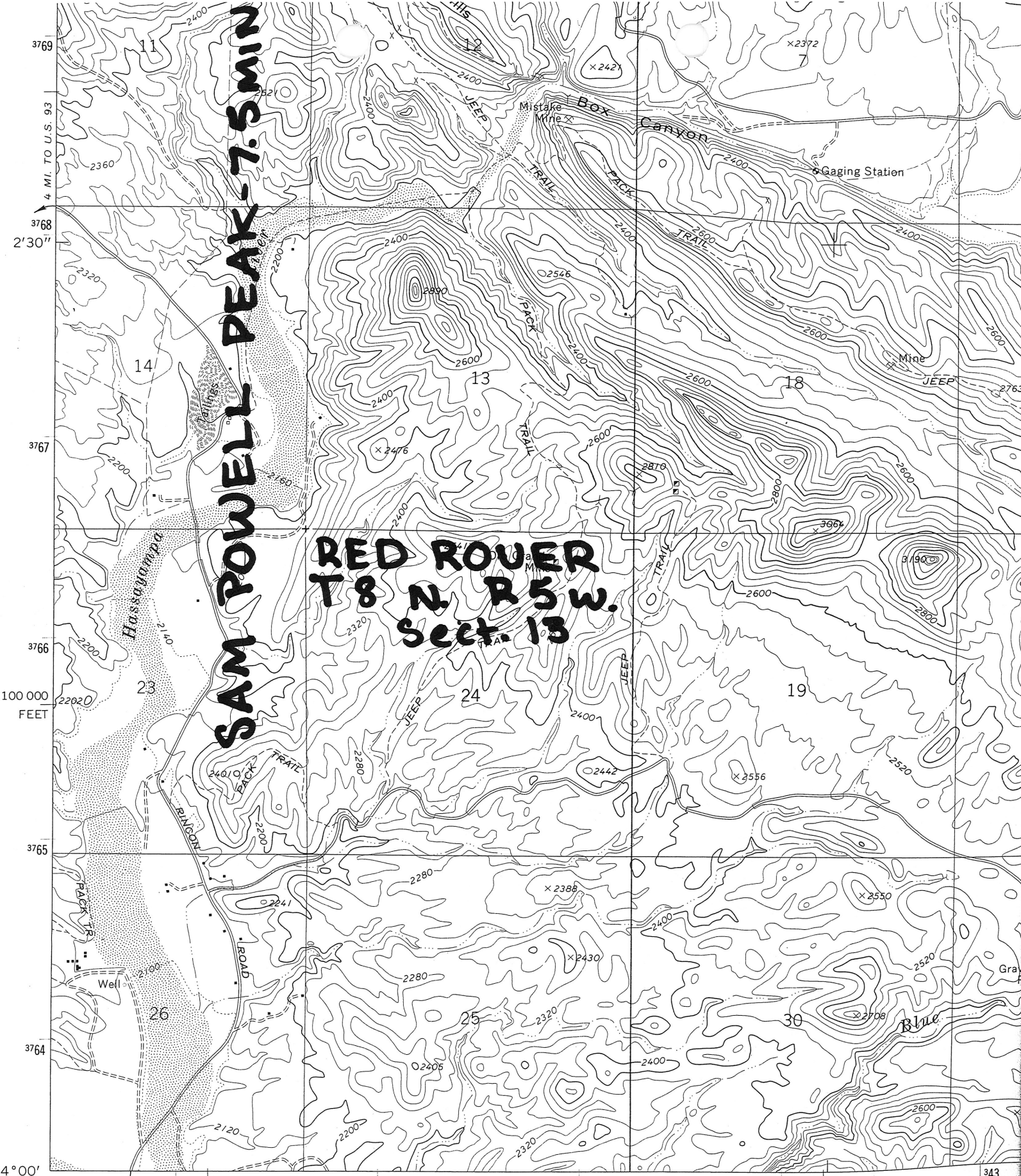
COMMODITY:
UNKNOWN

BIBLIOGRAPHY:
BLM AMC FILE 40909
CLAIMS EXTEND INTO NE QTR. SEC. 13
ADMMR RED ROVER FILE



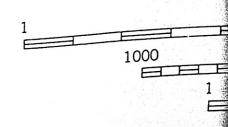
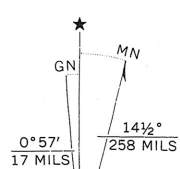
SAMPLING PEAK-7.5 MIN

**RED ROVER
T8 N. R. 5 W.
Sect. 13**



4° 00' 112° 45' WICKENBURG 2.5 MI.

Mapped, edited, and published by the Geological Survey
Control by USGS and USC&GS
Topography by photogrammetric methods from aerial
photographs taken 1968. Field checked 1969
Polyconic projection. 1927 North American datum
10,000-foot grid based on Arizona coordinate system, central zone



RED ROVER

YAVAPAI

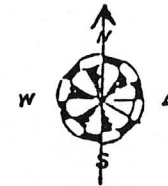
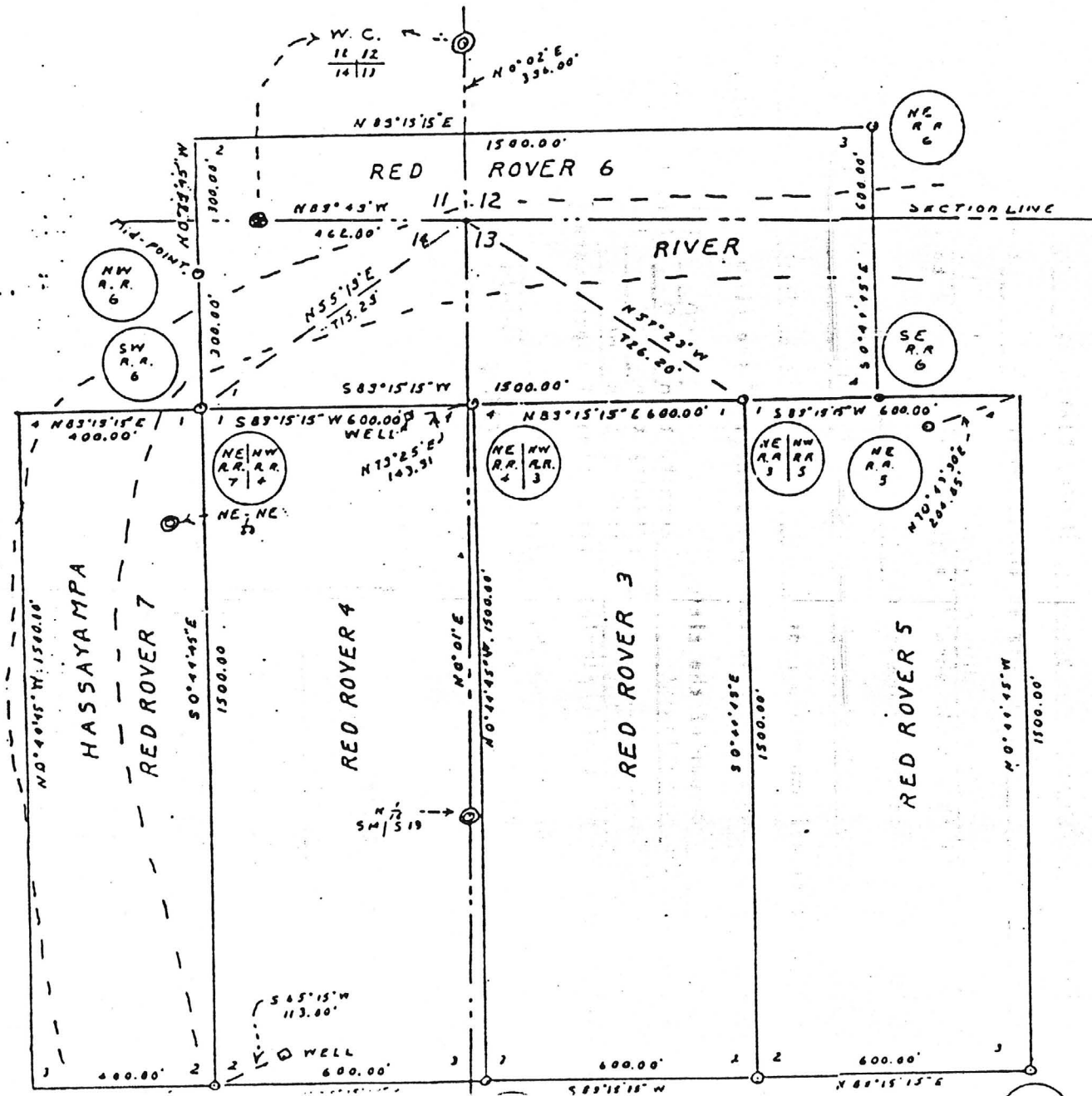
KAP WR 5/6/88:

Marty Smart and Lowell Porter of Doubleday Mining and Energy, P.O. Box 71100, Murry, Utah 84107 were in for information on the Red Rover (file) property in Yavapai County near Wickenburg. We had very little specific information even though Messrs Smart and Lowell had been told we (the Arizona Department of Mines and Mineral Resources) had drilled the property. It was explained that we had never drilled any property and that it was very doubtful that any other state or federal agency had drilled that property either. They plan to run a 2,000 yard test sample of placer material from the property and have committed a minimum of \$100,000 for evaluation of the property. Placer sampling methods were discussed.

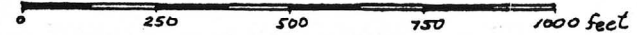
RED ROVER CLAIMS No's 3, 4, 5, 6, and 7, Lode Claims

Located in PARTS of SECTIONS 11, 12, 13, and 14, TOWNSHIP 8 NORTH, RANGE 5 WEST, G. & S. R. B. and M.
Yavapai County, Arizona.

March 5, 1884.



SCALE
1 inch = 356 feet



NOTES

- ⊙ Denotes steel pin and Aluminium Cap L.S. 4529.
- ⊙ Denotes U.S. Bureau of Land Management Brass Cap 1973.

Corner monuments: 4x4 wooden posts projecting 5 ft. above the ground in stone cairns.

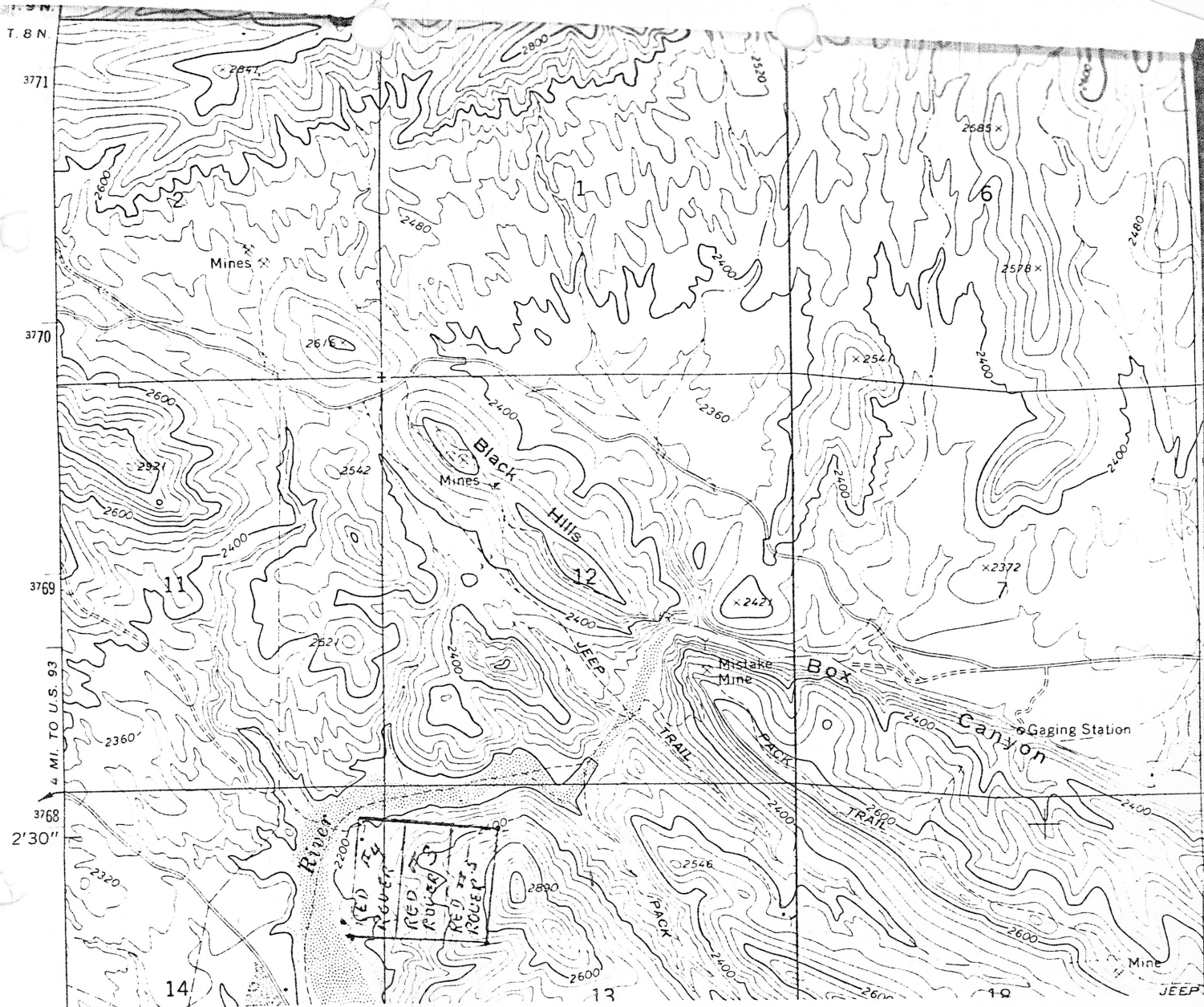
Location monuments: stone monuments

CERTIFICATE

I certify that I, MILFORD KENNETH PETERSON, Registered Civil Engineer and Land Surveyor did in February and March, 1884 survey the Red Rover Claims No's 3, 4, 5, 6, and 7, Located in parts of sections 11, 12, 13, and 14, Township 8 North, Range 5 West, G. & S. R. B. and M. as shown here on.

Milford K. Peterson
1884

Milford Kenneth Peterson
1884



No 4 Filed MARCH 23 1959
 No 3 " JULY 4 1969
 No 5 " JULY 18 1972

A MC 40909

RECEIVED
B.L.M. AZ STATE OFFICE

MAY 9 1979

10:00 A.M.
PHOENIX, ARIZONA

OWNERSHIP: AMORITA W. HOOD
 Box 112
 Congress, Az. 85332

Location: Gila & Salt River Meridian
 Section: 13 and 14, T-8-N, R-5-W, R-4-W.

Type of Claim: LODE 1500' x 600'
 Scale: 1" = 2000'

Red Rover # 6

NAME OF CLAIMS:
 RED ROVER # 4, Book 149, page 112
 RED ROVER # 3, Book 559, page 173
 RED ROVER # 5, Book 762, page 662

