



CONTACT INFORMATION

Mining Records Curator
Arizona Geological Survey
1520 West Adams St.
Phoenix, AZ 85007
602-771-1601
<http://www.azgs.az.gov>
inquiries@azgs.az.gov

The following file is part of the

Arizona Department of Mines and Mineral Resources Mining Collection

ACCESS STATEMENT

These digitized collections are accessible for purposes of education and research. We have indicated what we know about copyright and rights of privacy, publicity, or trademark. Due to the nature of archival collections, we are not always able to identify this information. We are eager to hear from any rights owners, so that we may obtain accurate information. Upon request, we will remove material from public view while we address a rights issue.

CONSTRAINTS STATEMENT

The Arizona Geological Survey does not claim to control all rights for all materials in its collection. These rights include, but are not limited to: copyright, privacy rights, and cultural protection rights. The User hereby assumes all responsibility for obtaining any rights to use the material in excess of "fair use."

The Survey makes no intellectual property claims to the products created by individual authors in the manuscript collections, except when the author deeded those rights to the Survey or when those authors were employed by the State of Arizona and created intellectual products as a function of their official duties. The Survey does maintain property rights to the physical and digital representations of the works.

QUALITY STATEMENT

The Arizona Geological Survey is not responsible for the accuracy of the records, information, or opinions that may be contained in the files. The Survey collects, catalogs, and archives data on mineral properties regardless of its views of the veracity or accuracy of those data.

02/17/87

ARIZONA DEPARTMENT OF MINES AND MINERAL RESOURCES FILE DATA

PRIMARY NAME: RED RHYOLITE

ALTERNATE NAMES:

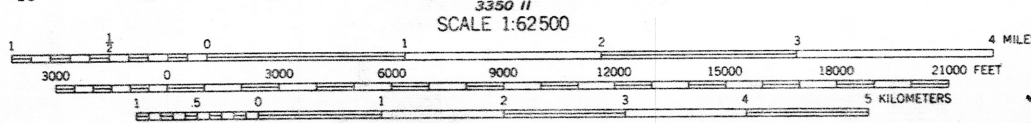
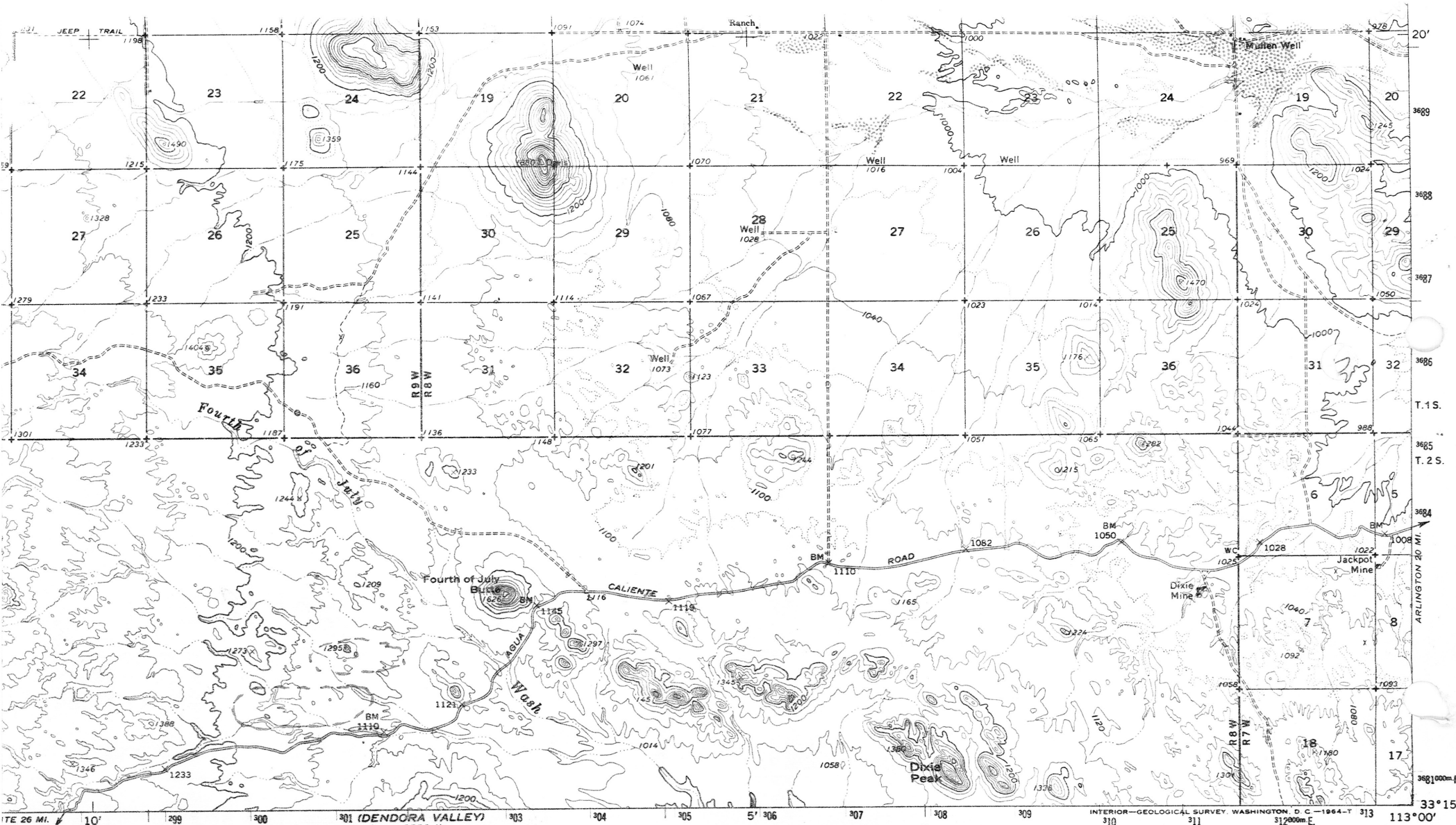
MARICOPA COUNTY MILS NUMBER: 702

LOCATION: TOWNSHIP 2 S RANGE 9 W SECTION 13 QUARTER --
LATITUDE: N DEG MIN SEC LONGITUDE: W DEG MIN SEC
TOPO MAP NAME: CORTEZ PEAK - 15 MIN

CURRENT STATUS: UNKNOWN

COMMODITY:
GOLD

BIBLIOGRAPHY:
ADMMR RED RHYOLITE FILE
ALSO IN SEC 14



CONTOUR INTERVAL 40 FEET
 DOTTED LINES REPRESENT 20-FOOT CONTOURS
 DATUM IS MEAN SEA LEVEL

RED RHYOLITE
SEC. 13+14, T. 25, R. 9 W.

ROAD CLASSIFICATION
 ————— Light-duty
 - - - - - Unimproved dirt



QUADRANGLE LOCATION

CORTEZ PEAK, ARIZ
 N3315—W11300/15

THIS MAP COMPLIES WITH NATIONAL MAP ACCURACY STANDARDS
 FOR SALE BY U. S. GEOLOGICAL SURVEY, DENVER 25, COLORADO OR WASHINGTON 25, D. C.
 A FOLDER DESCRIBING TOPOGRAPHIC MAPS AND SYMBOLS IS AVAILABLE ON REQUEST

MARICOPA MILS # 702

1962
 AMS 3350 I—SERIES V798

RED RHYOLITE

MARICOPA COUNTY
T2S R9W Sec 13, 14

KAP WR 12/30/83: In the company and at the request of Jim Weatherby, a field visit was made to a large outcrop of rhyolite which exhibited a significant color anomaly (red) from a distance. The outcrops are located in Secs. 13 & 14 (protracted), T2S R9W about 30 miles west of Arlington via the Agua Caliente Road and form a prominent knob about $\frac{1}{2}$ - 1 mile north of the road. The outcrop consists of a rhyolite plug or dike whose outcrop is elongated in an east-west direction. The outcrop is reddish-brown in color and a hand specimen shows quartz "eyes" and some banding. Some fresh breaks of near surface material may contain carbonates (reaction to dilute hydrochloric acid may be from carbonates in the rock or possibly from caliche which has migrated through invisible cracks.) The granite-gneiss complex through which the rhyolite has extruded has locally been altered. Two samples were taken for fire assay. The first is of clean rhyolite. The second is from an altered (possibly mineralized) iron stained (only slightly) structure cut by a wash about 300' southwest of the outcrop. The results are not yet available.
