



CONTACT INFORMATION

Mining Records Curator
Arizona Geological Survey
1520 West Adams St.
Phoenix, AZ 85007
602-771-1601
<http://www.azgs.az.gov>
inquiries@azgs.az.gov

The following file is part of the

Arizona Department of Mines and Mineral Resources Mining Collection

ACCESS STATEMENT

These digitized collections are accessible for purposes of education and research. We have indicated what we know about copyright and rights of privacy, publicity, or trademark. Due to the nature of archival collections, we are not always able to identify this information. We are eager to hear from any rights owners, so that we may obtain accurate information. Upon request, we will remove material from public view while we address a rights issue.

CONSTRAINTS STATEMENT

The Arizona Geological Survey does not claim to control all rights for all materials in its collection. These rights include, but are not limited to: copyright, privacy rights, and cultural protection rights. The User hereby assumes all responsibility for obtaining any rights to use the material in excess of "fair use."

The Survey makes no intellectual property claims to the products created by individual authors in the manuscript collections, except when the author deeded those rights to the Survey or when those authors were employed by the State of Arizona and created intellectual products as a function of their official duties. The Survey does maintain property rights to the physical and digital representations of the works.

QUALITY STATEMENT

The Arizona Geological Survey is not responsible for the accuracy of the records, information, or opinions that may be contained in the files. The Survey collects, catalogs, and archives data on mineral properties regardless of its views of the veracity or accuracy of those data.

07/15/87

ARIZONA DEPARTMENT OF MINES AND MINERAL RESOURCES FILE DATA

PRIMARY NAME: RED EAGLE AND BLACK PIT

ALTERNATE NAMES:

MOHAVE COUNTY MILS NUMBER: 752

LOCATION: TOWNSHIP 12 N RANGE 15 W SECTION 23 QUARTER N2
LATITUDE: N 34DEG 30MIN SEC LONGITUDE: W 113DEG 45MIN SEC
TOPO MAP NAME: CASTANEDA HILLS - 15 MIN

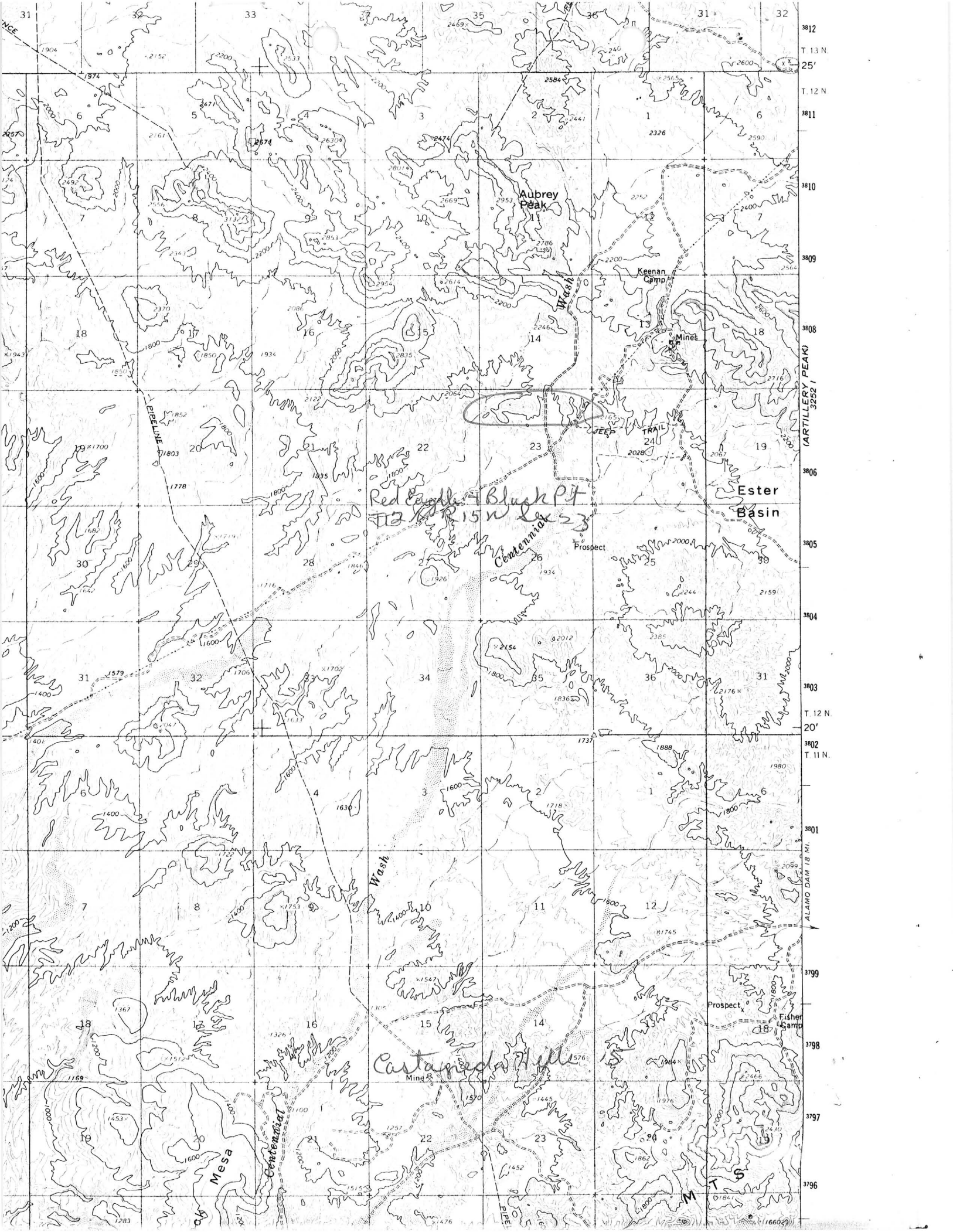
CURRENT STATUS: RAW PROSPECT

COMMODITY:

LEAD
ZINC
GOLD
SILVER

BIBLIOGRAPHY:

ADMMR RED EAGLE AND BLACK PIT



RED EAGLE AND BLACK PIT

MOHAVE COUNTY

NJN WR 6/5/87: Provided information on sources of geologic maps, literature and possible field base maps to Peter Leriche, geologist, Ashworth Explorations Limited, 744 West Hastings Street, Vancouver BC, V6C 1A5. He is working on a submittal in Mohave County located in T12N R15W Sec 23 NE and NW. The prospect consists of 6' - 7' wide quartz/barite veins which show lead and zinc and carry gold and silver values. This high angle vein occurs in a structural zone up to 200' wide. He referred to this property as the Red Eagle and Black Pit. Mr. Leiriche reports that the property has been prospected for 30 years and was held for a long time by a Los Angeles lawyer.

NJN WR 8/7/87: Peter Leriche of Vancouver BC called and reported that he will send us some data on the Red Eagle Black Pit (file) when the client's company goes public. He has spent 3 more weeks working on the property.
