



CONTACT INFORMATION

Mining Records Curator
Arizona Geological Survey
1520 West Adams St.
Phoenix, AZ 85007
602-771-1601
<http://www.azgs.az.gov>
inquiries@azgs.az.gov

The following file is part of the

Arizona Department of Mines and Mineral Resources Mining Collection

ACCESS STATEMENT

These digitized collections are accessible for purposes of education and research. We have indicated what we know about copyright and rights of privacy, publicity, or trademark. Due to the nature of archival collections, we are not always able to identify this information. We are eager to hear from any rights owners, so that we may obtain accurate information. Upon request, we will remove material from public view while we address a rights issue.

CONSTRAINTS STATEMENT

The Arizona Geological Survey does not claim to control all rights for all materials in its collection. These rights include, but are not limited to: copyright, privacy rights, and cultural protection rights. The User hereby assumes all responsibility for obtaining any rights to use the material in excess of "fair use."

The Survey makes no intellectual property claims to the products created by individual authors in the manuscript collections, except when the author deeded those rights to the Survey or when those authors were employed by the State of Arizona and created intellectual products as a function of their official duties. The Survey does maintain property rights to the physical and digital representations of the works.

QUALITY STATEMENT

The Arizona Geological Survey is not responsible for the accuracy of the records, information, or opinions that may be contained in the files. The Survey collects, catalogs, and archives data on mineral properties regardless of its views of the veracity or accuracy of those data.

08/03/87

ARIZONA DEPARTMENT OF MINES AND MINERAL RESOURCES FILE DATA

PRIMARY NAME: RED BIRD PLACER

ALTERNATE NAMES:

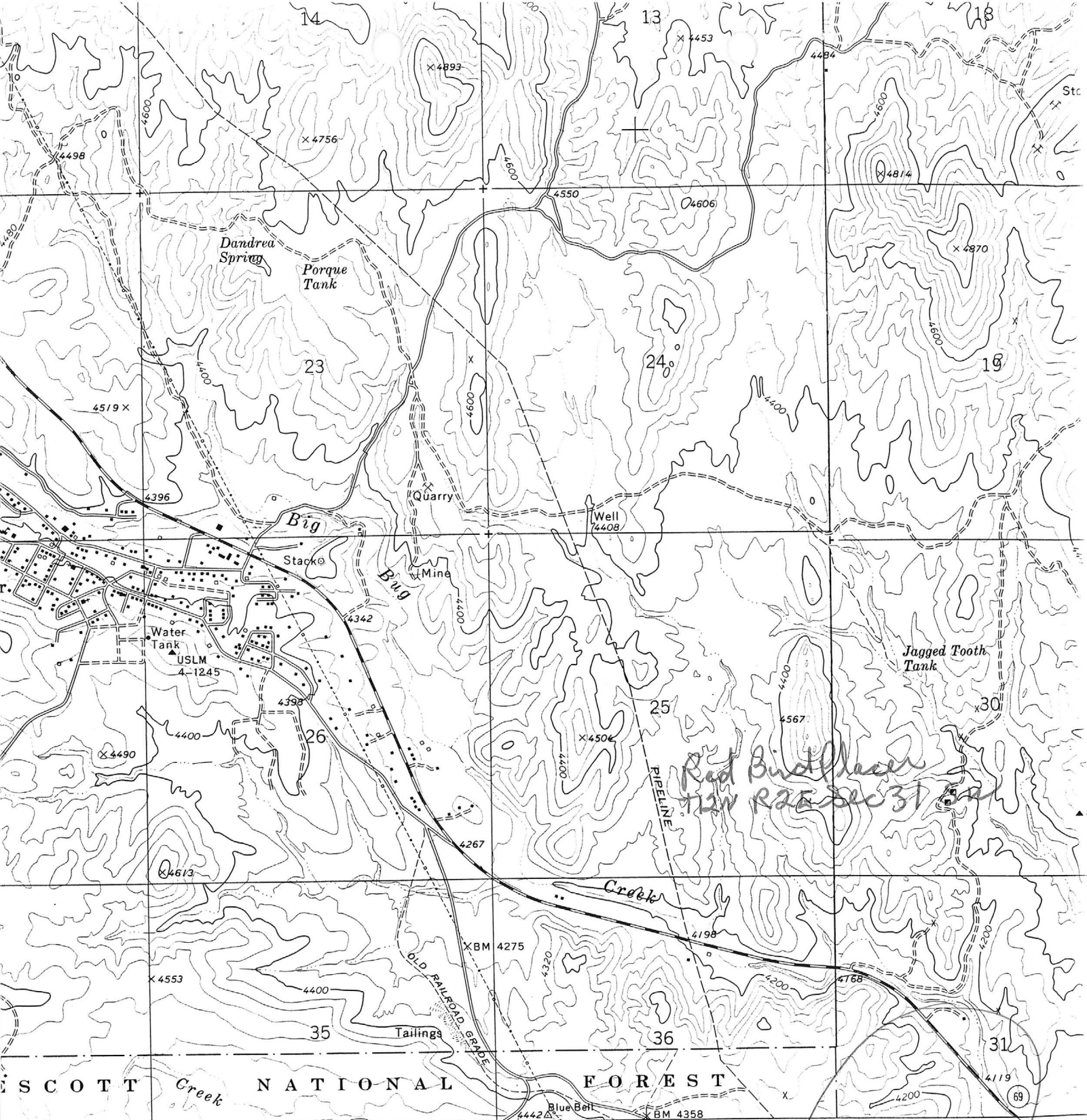
YAVAPAI COUNTY MILS NUMBER: 1372

LOCATION: TOWNSHIP 12 N RANGE 2 E SECTION 31 QUARTER SW
LATITUDE: N 34DEG 30MIN SEC LONGITUDE: W 112DEG 07MIN SEC
TOPO MAP NAME: MAYER - 7.5 MIN

CURRENT STATUS:

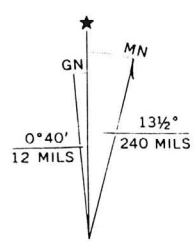
COMMODITY: GOLD PLACER

BIBLIOGRAPHY: ADMMR RED BIRD PLACER FILE

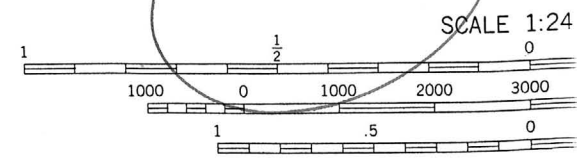


SCOTT CREEK NATIONAL FOREST
 386 387 388 12'30" R 1 E R 2 E 390 (CLEATOR) 3552 1 SW CORD. PHOE

Published by the Geological Survey
 S/NOAA
 metric methods from aerial
 Field checked 1974
 Not grid ticks: Arizona coordinate
 (verse Mercator)
 Inverse Mercator grid ticks,
 1927 North American datum
 Indicate selected fence lines



UTM GRID AND 1974 MAGNETIC NORTH DECLINATION AT CENTER OF SHEET



SCALE 1:24
 CONTOUR INTERVAL
 NATIONAL GEODETIC VERTIC

Mayer 7.5

THIS MAP COMPLIES WITH NATIONAL FOR SALE BY U. S. GEOLOGICAL SURVEY, DENVER. CC A FOLDER DESCRIBING TOPOGRAPHIC MAPS AN

RED BIRD PLACER

YAVAPAI COUNTY

MG WR 5/1/87: Ms. Martha Schreiner of Tucson, phone 721-2033, reports that her Red Bird Placer has been leased to Mr. Larry Miller, President, Frontier Mining Co., Texas. He has moved heavy placering equipment onto the site. The property is on the Big Bug Creek, in the Big Bug placer district, and is located in the SW $\frac{1}{4}$, Sec 31, T12N R2E (Yavapai County).
