



CONTACT INFORMATION

Mining Records Curator
Arizona Geological Survey
1520 West Adams St.
Phoenix, AZ 85007
602-771-1601
<http://www.azgs.az.gov>
inquiries@azgs.az.gov

The following file is part of the

Arizona Department of Mines and Mineral Resources Mining Collection

ACCESS STATEMENT

These digitized collections are accessible for purposes of education and research. We have indicated what we know about copyright and rights of privacy, publicity, or trademark. Due to the nature of archival collections, we are not always able to identify this information. We are eager to hear from any rights owners, so that we may obtain accurate information. Upon request, we will remove material from public view while we address a rights issue.

CONSTRAINTS STATEMENT

The Arizona Geological Survey does not claim to control all rights for all materials in its collection. These rights include, but are not limited to: copyright, privacy rights, and cultural protection rights. The User hereby assumes all responsibility for obtaining any rights to use the material in excess of "fair use."

The Survey makes no intellectual property claims to the products created by individual authors in the manuscript collections, except when the author deeded those rights to the Survey or when those authors were employed by the State of Arizona and created intellectual products as a function of their official duties. The Survey does maintain property rights to the physical and digital representations of the works.

QUALITY STATEMENT

The Arizona Geological Survey is not responsible for the accuracy of the records, information, or opinions that may be contained in the files. The Survey collects, catalogs, and archives data on mineral properties regardless of its views of the veracity or accuracy of those data.

06/04/86

ARIZONA DEPARTMENT OF MINES AND MINERAL RESOURCES FILE DATA

PRIMARY NAME: RED ROCK CLAY

ALTERNATE NAMES:

GILA COUNTY MILS NUMBER: 557

LOCATION: TOWNSHIP 11.5N RANGE 9 E SECTION 25 QUARTER NW
LATITUDE: N DEG MIN SEC LONGITUDE: W DEG MIN SEC
TOPO MAP NAME: BUCKHEAD MESA - 7.5 MIN

CURRENT STATUS: RAW PROSPECT

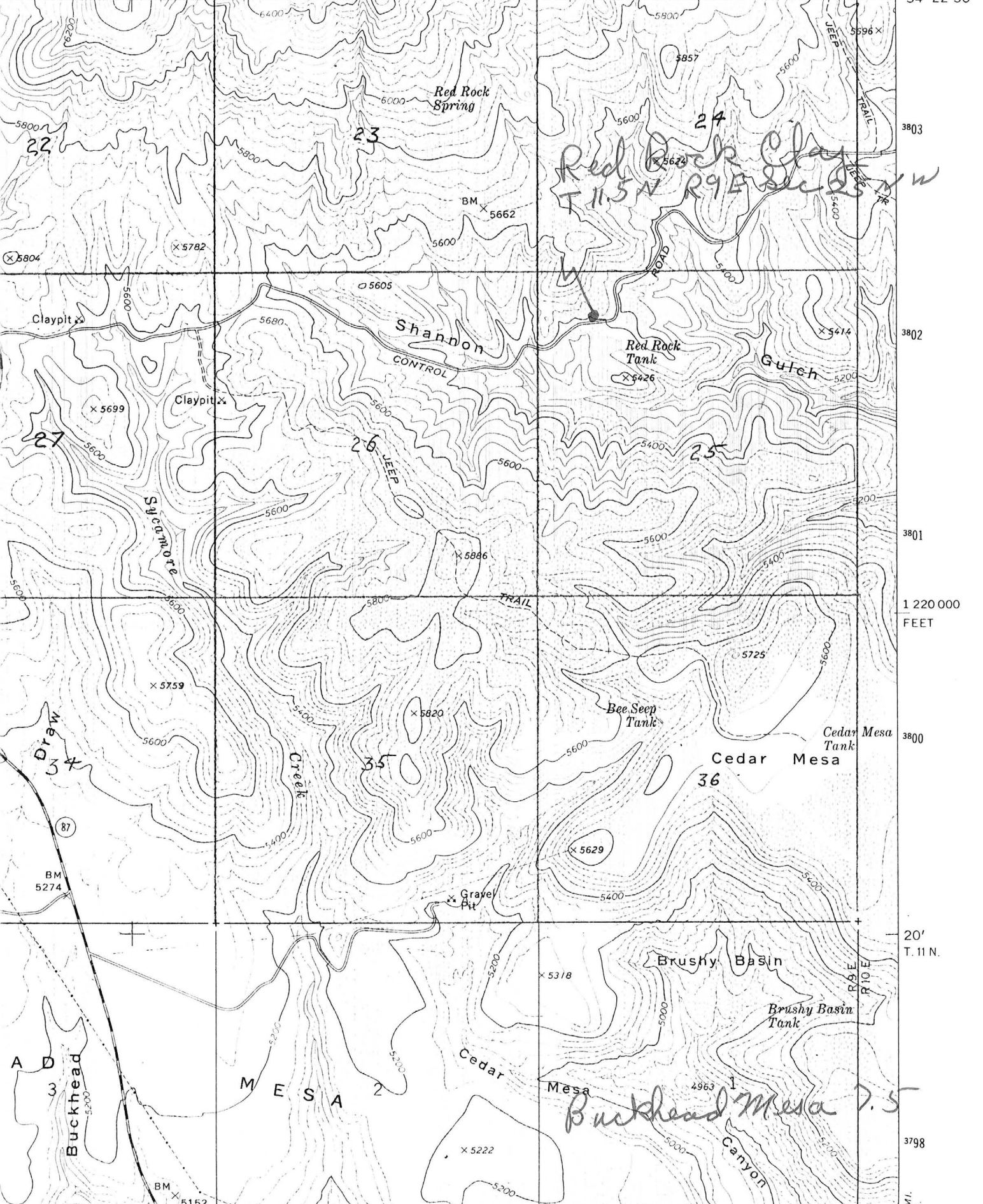
COMMODITY:
CLAY FIRE

BIBLIOGRAPHY:
ADMMR RED ROCK CLAY FILE

BUCKHEAD MESA QUADRANGLE
AR. NA-GILA CO.
7.5 MINUTE SERIES (TOPOGRAPHIC)
SW/4 PINE 15' QUADRANGLE

3752 IV NE
(KEHL RIDG)

61 25' 462 463 130 000 FEET 465 111°22'30" 34°22'30"



RED ROCK CLAY

GILA COUNTY

KAP WR 10/4/85: In the company of Dick Wall visits were made to a number of clay occurrences in the Diamond Rim area of Gila County. Mr. Wall collected a sample of a clayey material from a road cut on the north side on Control Road approximately 2.5 miles east of its intersection with State Highway 87. He plans to test the clay sample. This site has been named Red Rock Clay and is located in the NW, Sec 25, (proj), T11.5N, R9E, Gila County. The exposure was small and like nearly all the other in the area was overlain by limestone. The sample included considerable limestone and other rock and fragments.
