



## **CONTACT INFORMATION**

Mining Records Curator  
Arizona Geological Survey  
1520 West Adams St.  
Phoenix, AZ 85007  
602-771-1601  
<http://www.azgs.az.gov>  
[inquiries@azgs.az.gov](mailto:inquiries@azgs.az.gov)

The following file is part of the

Arizona Department of Mines and Mineral Resources Mining Collection

## **ACCESS STATEMENT**

These digitized collections are accessible for purposes of education and research. We have indicated what we know about copyright and rights of privacy, publicity, or trademark. Due to the nature of archival collections, we are not always able to identify this information. We are eager to hear from any rights owners, so that we may obtain accurate information. Upon request, we will remove material from public view while we address a rights issue.

## **CONSTRAINTS STATEMENT**

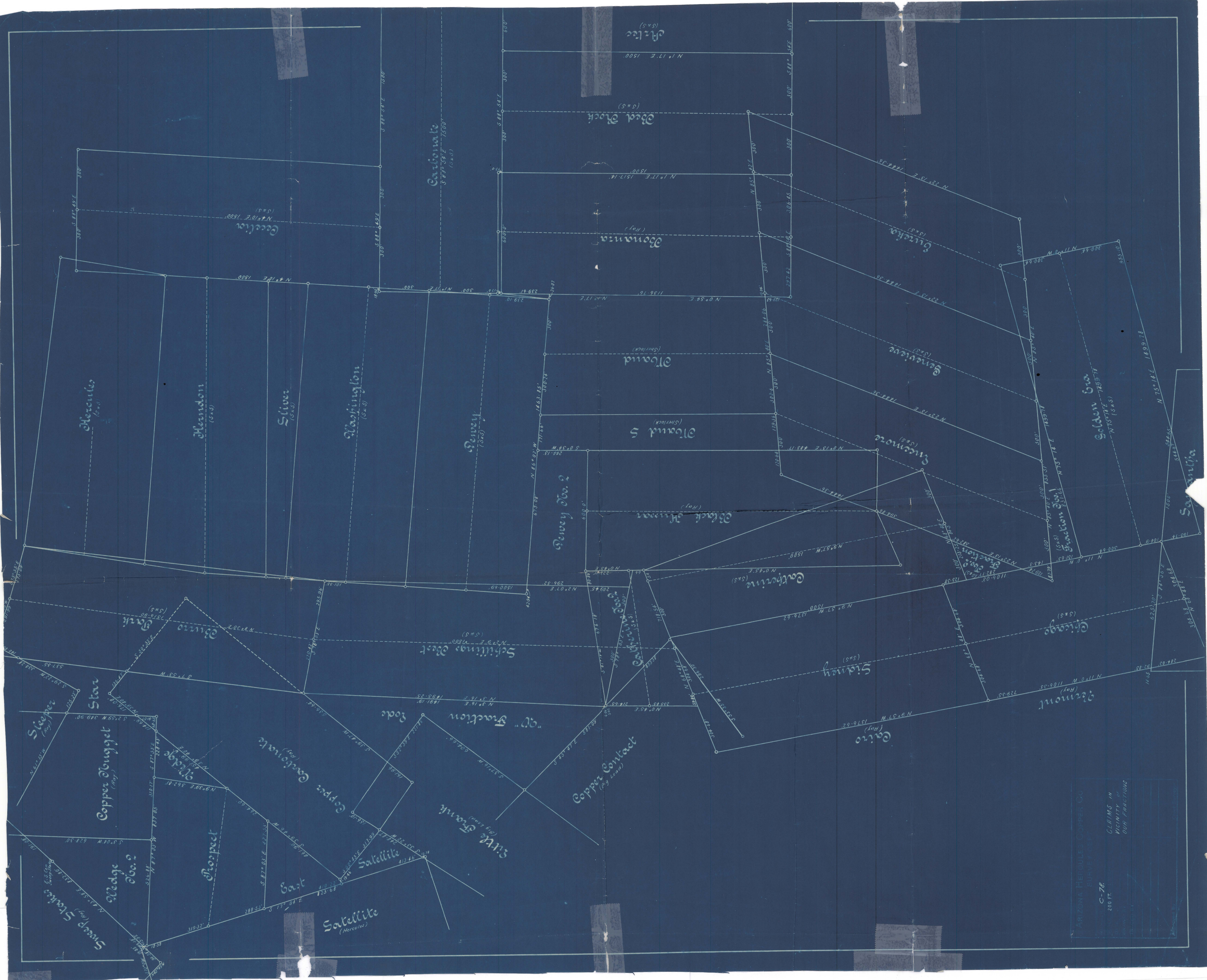
The Arizona Geological Survey does not claim to control all rights for all materials in its collection. These rights include, but are not limited to: copyright, privacy rights, and cultural protection rights. The User hereby assumes all responsibility for obtaining any rights to use the material in excess of "fair use."

The Survey makes no intellectual property claims to the products created by individual authors in the manuscript collections, except when the author deeded those rights to the Survey or when those authors were employed by the State of Arizona and created intellectual products as a function of their official duties. The Survey does maintain property rights to the physical and digital representations of the works.

## **QUALITY STATEMENT**

The Arizona Geological Survey is not responsible for the accuracy of the records, information, or opinions that may be contained in the files. The Survey collects, catalogs, and archives data on mineral properties regardless of its views of the veracity or accuracy of those data.

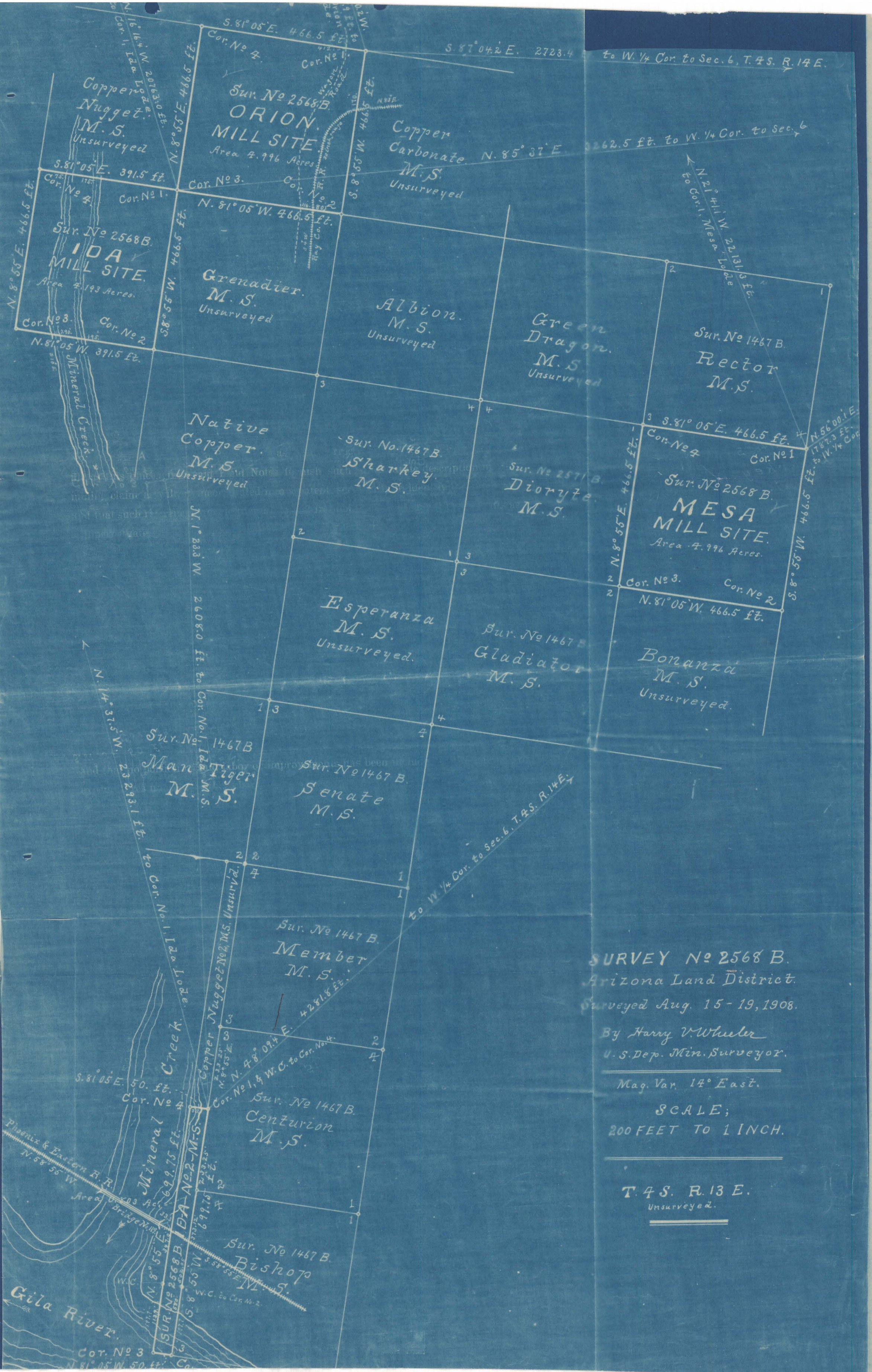












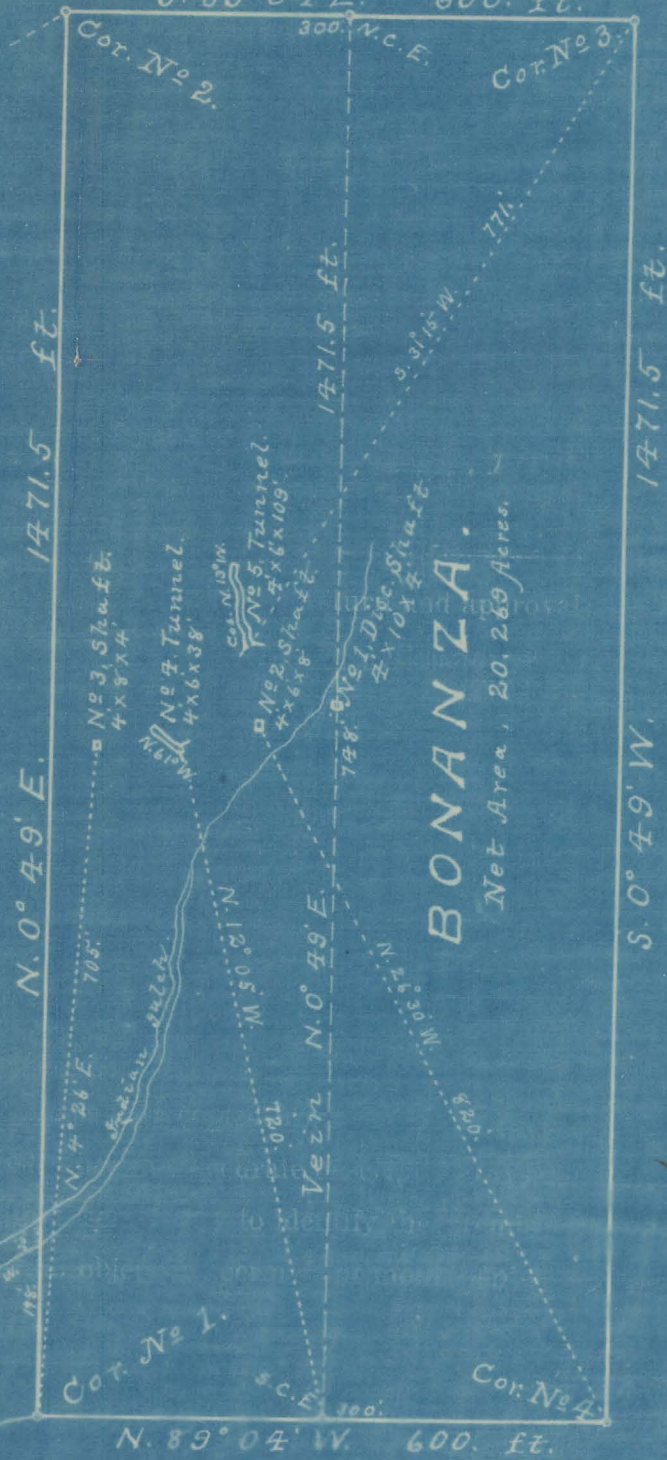


Sur. No 2569 A.

Black Hussar

T. 3 S. R. 13 E.  
Unsurveyed.

Maude Lode.  
Unsurveyed.



# SURVEY No 2570 A & B.

Arizona Land District.

Surveyed August 26-30-1908.

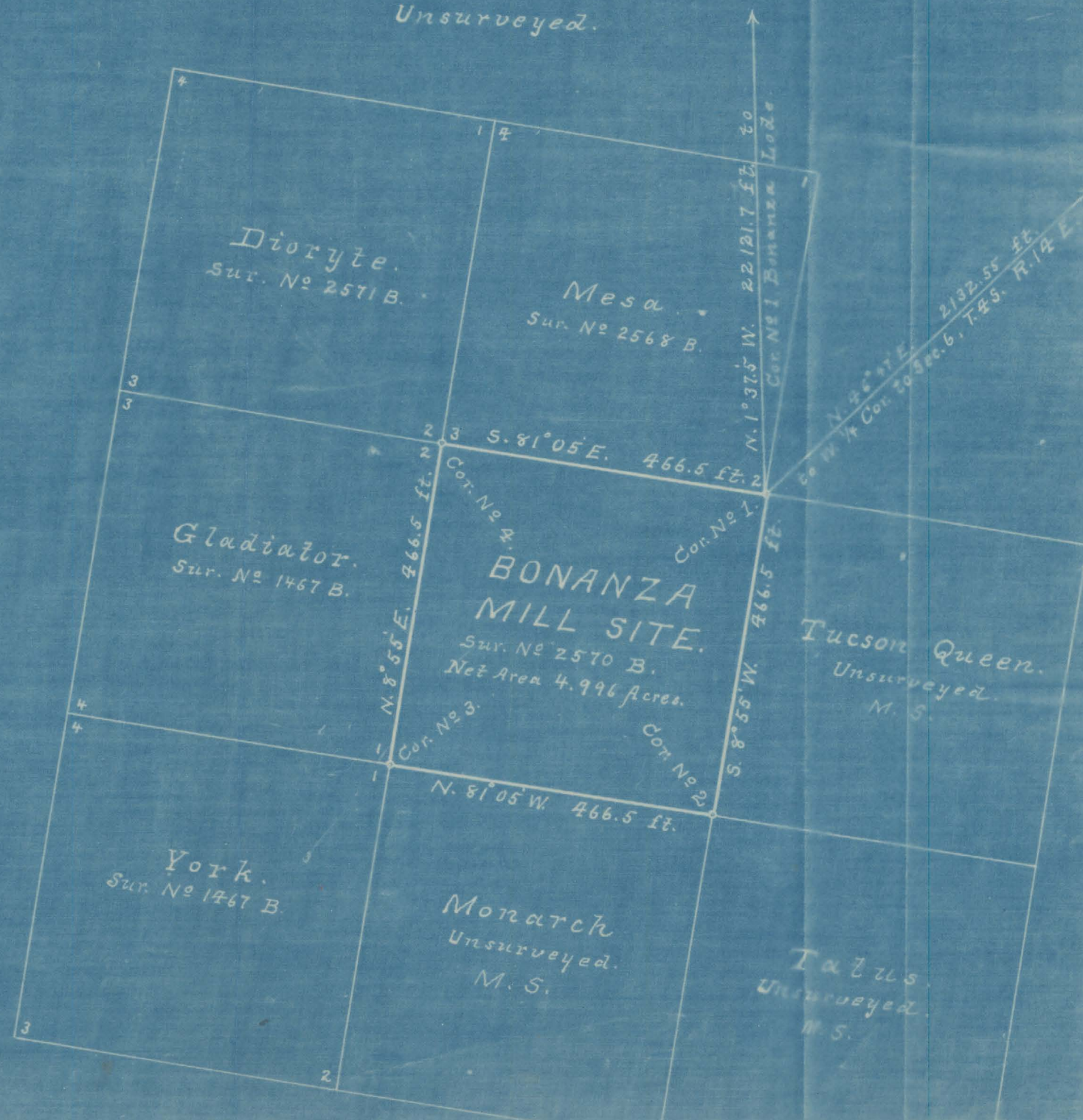
By Harry V. Wheeler

U.S. Dep. Min. Surveyor.

Mag. Var. 14° East.

SCALE: 200 FEET TO 1 INCH.

T. 4 S. R. 13 E.  
Unsurveyed.





# SURVEY No 2569 A & B.

Arizona Land District.

Surveyed August 20-24-1908.

By Harry V. Wheeler

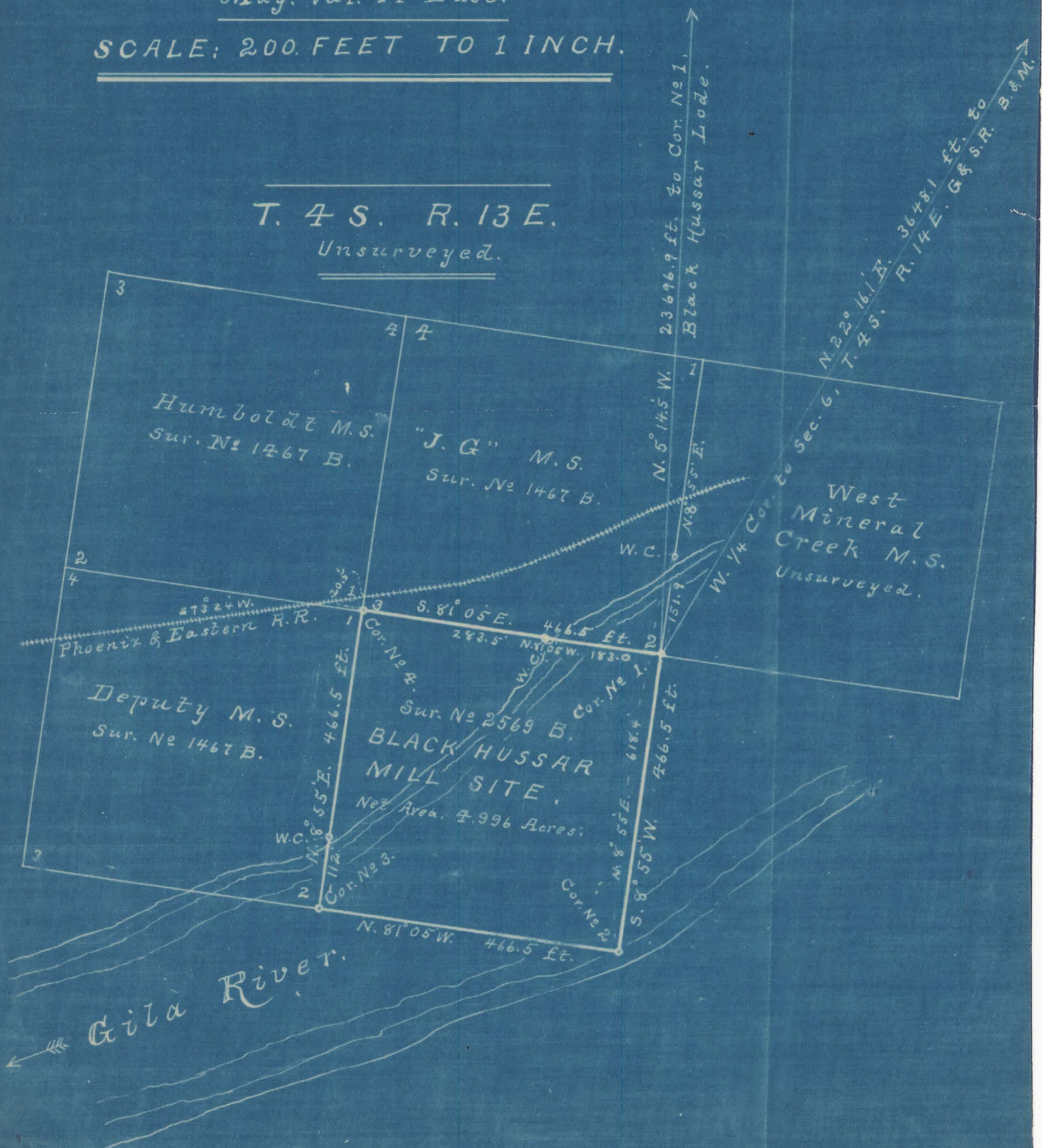
U. S. Dep. Min. Surveyor.

Mag. Var.  $14^{\circ}$  East.

SCALE: 200 FEET TO 1 INCH.

T. 4 S. R. 13 E.

Unsurveyed.





T. 3 S. R. 13 E.  
Sec. 11 Sec. 12

CONTENTION  
SURVEY No 1581

COLORADO  
SURVEY No 3367

ADVENTURE  
SURVEY No 3367

JUAREZ  
SURVEY No 3367

SWEEPSTAKE  
SURVEY No 2572A

COPPER NUGGET  
SURVEY No 2572A

SATELLITE No 2  
Bluebell Gulch

THOMAS  
SURVEY No 1581

Sec. 14

WEDGE No 2

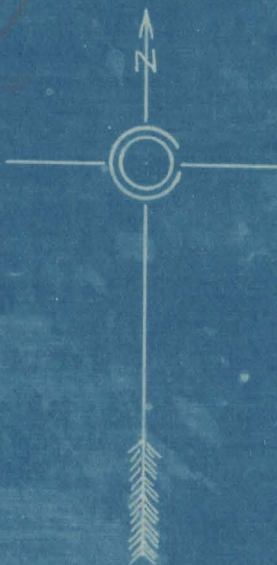
COPPER CARBONATE  
SURVEY No 2572A

Sec. 13

SURVEY No 3381  
MINERAL CREEK MINING DISTRICT  
PINAL COUNTY, ARIZONA  
SCALE, 1 in = 300 ft

Oliver C Thompson  
U.S. Mineral Surveyor

Plotted  
8/10/17



SATURN  
SURVEY No 1581

SATELLITE  
SURVEY No 1581

LITTLE FRANK  
SURVEY No 2466

FRACTION  
SURVEY No 2466

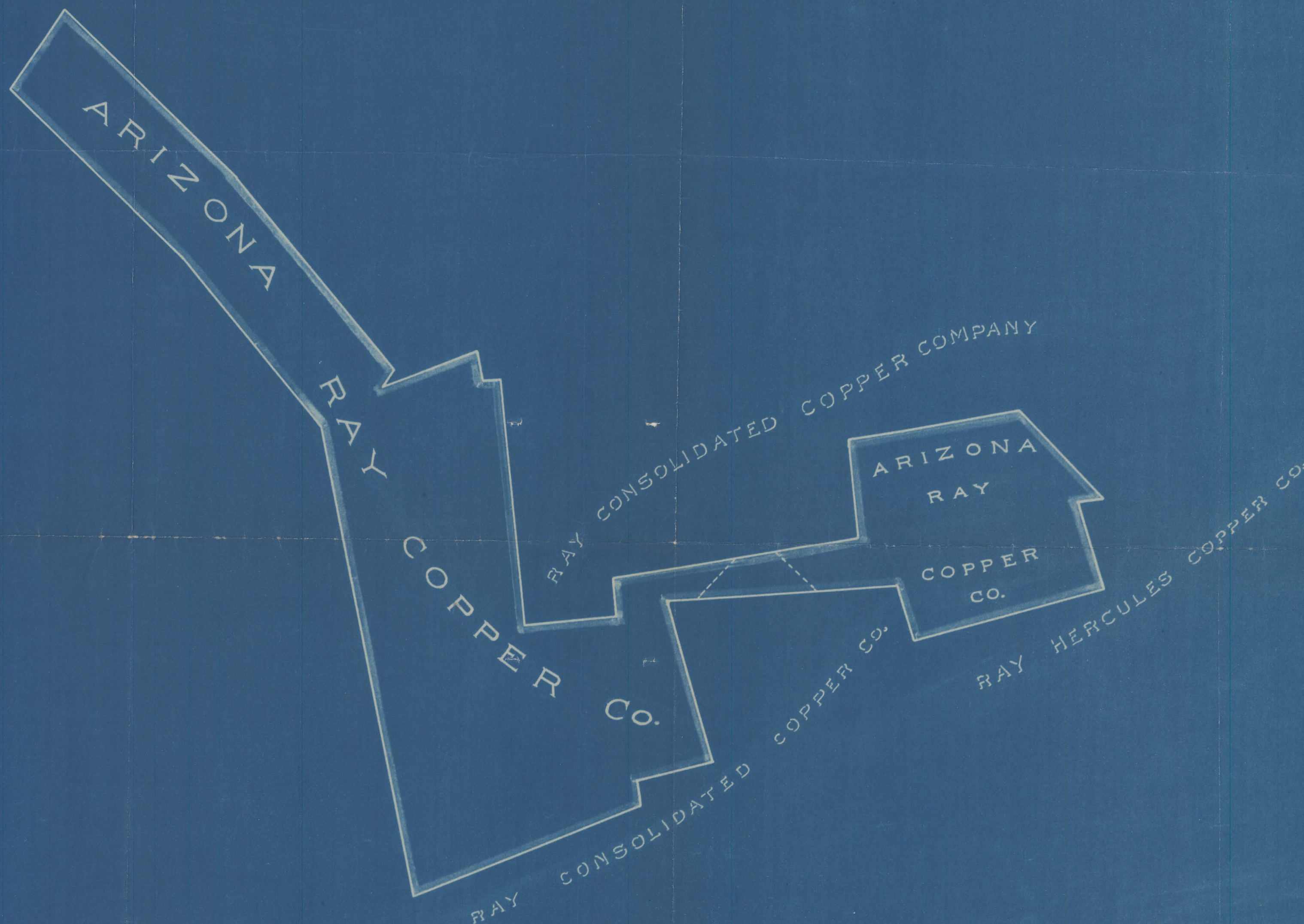
FRACTION

COPPER CONTACT  
SURVEY No 2466

SCHILLING'S BEST LODE  
UNSURVEYED  
B.F. SCHILLING, OWNER

U.S.M.M. No 1





— MAP —  
Showing Property of  
ARIZONA RAY COPPER CO.  
— RAY, ARIZONA. —  
Sept. 1, 1916 ————— Scale 1" = 500 ft.





T4S R13E

Unsurveyed

SCALE,  
200 FEET TO 1 INCH

Mag Var. 14° East

By Harry Verbeke  
U.S. Mineral Surveyor

SURVEY No 2615 B  
Arizona Land District  
Surveyed Dec 14-17, 1908



SURVEY N<sup>o</sup> 2573 A & B.

Arizona Land District

Surveyed November, 23-27, 1908.

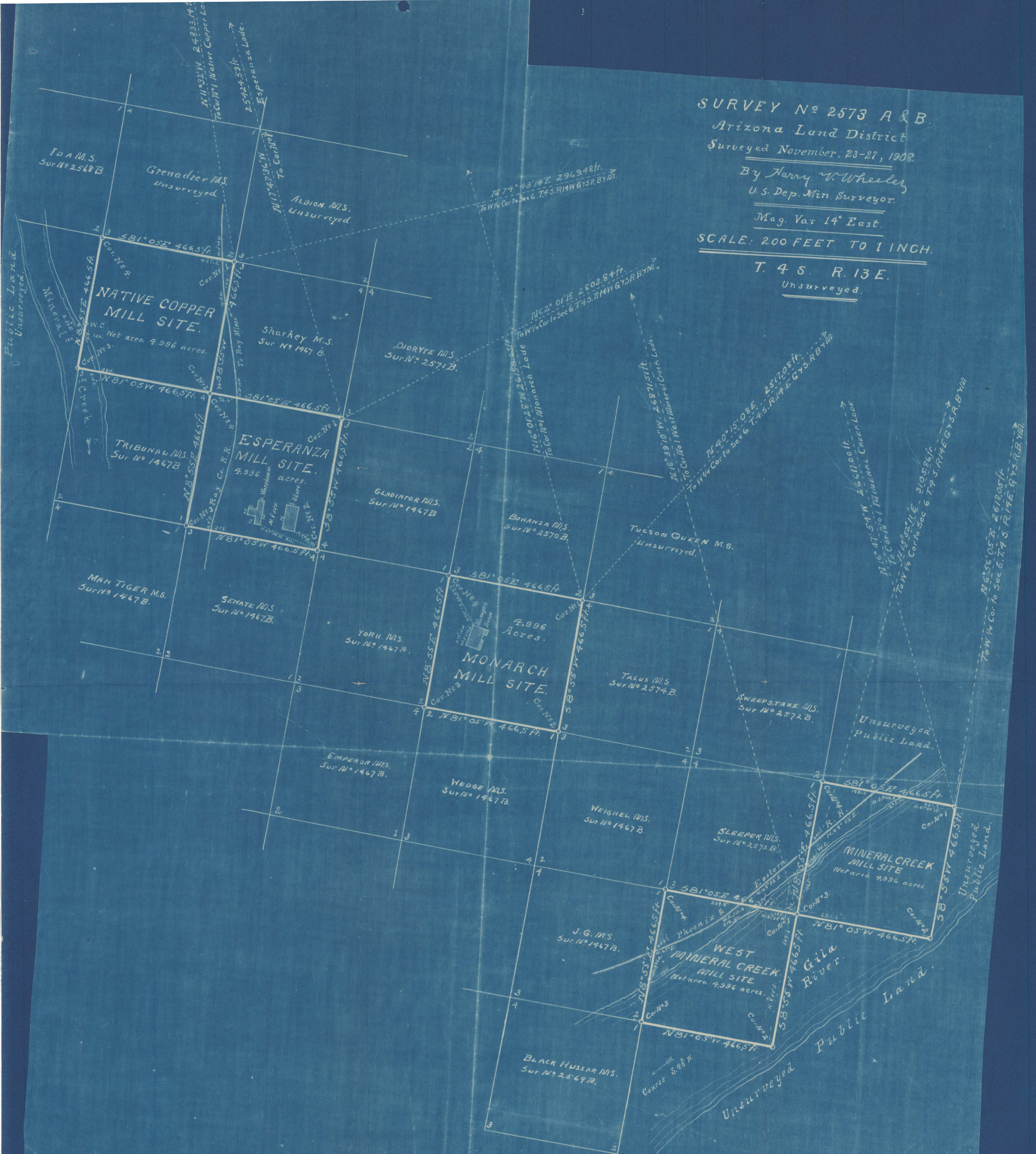
By Harry W. Wheeler,  
U.S. Dep. Min. Surveyor.

Mag. Var 14° East.

SCALE: 200 FEET TO 1 INCH.

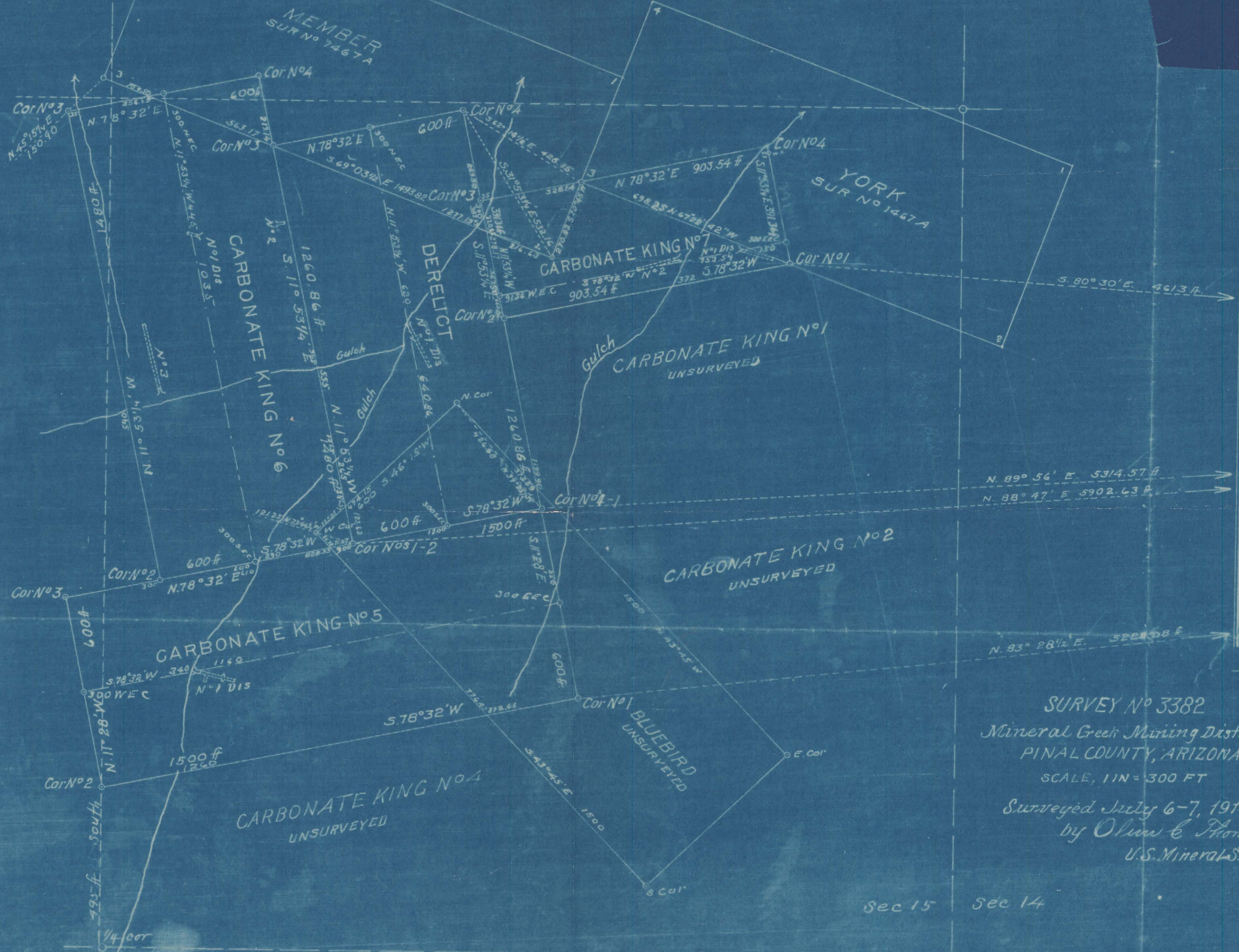
T. 4 S. R. 13 E.

Unsurveyed.





JUL 17 1917



SURVEY No 3382  
Mineral Creek Mining District  
PINAL COUNTY, ARIZONA  
SCALE, 1 IN = 300 FT  
Surveyed July 6-7, 1917  
by Oliver E. Thompson  
U.S. Mineral Surveyor

Sec 15    Sec 14  
Sec 22    Sec 23  
T.3 S.    R.13 E  
UNAPPROVED



**U.S. MINERAL SURVEY 3367**  
 MINERAL CREEK MINING DISTRICT, PINAL COUNTY, ARIZONA  
 SURVEYED FEB. 20 - MARCH 20, 1917. BY P. E. FERNALD U.S.M.S.  
 SCALE OF PLAT 300 FEET = 1 INCH.

**MINERAL CREEK MINING DISTRICT.**

**CARNATION**

**COMBINATION**

**COPPER ZONE NO. 1**

**COPPER ZONE NO. 2**

**COPPER ZONE NO. 3**

**COPPER ZONE NO. 4**

**COPPER ZONE NO. 5**

**COPPER ZONE NO. 6**

**COPPER ZONE NO. 7**

**COPPER ZONE NO. 8**

**GRANITE**

**BLACK WARRIOR SUR 2465**

**JUAREZ**

**ADVENTURE**

**WEDGE**

**CHICAGO SUR 2605**

**MARION SUR 3055**

**NEW YORK SUR 2605**

**BOSTON SUR 2605**

**TRUMAN SUR 1581**

**CONTENTION SUR 1581**

**SATURN SUR 1581**

**SATELLITE SUR 1581**

**THOMAS SUR 1581**

**WEDGE AND CARRIE NATION CONFLICTS SHOWN ON SPECIAL PLAT**

**U.S. MINERAL MONUMENT NO. 2718**

**MAG. NORTH.**  
**VARIATION 14° E.**  
**TRUE NORTH**

U.S. MINERAL MONUMENT  
NO. 2718.



SURVEY No 2600  
Arizona Land District  
Surveyed Oct. 7-9 1908

By Harry V Wheeler  
U. S. Dep. Min Surveyor

Mag. Var. 14° East.

SCALE  
300 FEET TO 1 INCH

T. 3 S. R. 13 E  
Unsurveyed.

