



## **CONTACT INFORMATION**

Mining Records Curator  
Arizona Geological Survey  
1520 West Adams St.  
Phoenix, AZ 85007  
602-771-1601  
<http://www.azgs.az.gov>  
[inquiries@azgs.az.gov](mailto:inquiries@azgs.az.gov)

The following file is part of the

Arizona Department of Mines and Mineral Resources Mining Collection

## **ACCESS STATEMENT**

These digitized collections are accessible for purposes of education and research. We have indicated what we know about copyright and rights of privacy, publicity, or trademark. Due to the nature of archival collections, we are not always able to identify this information. We are eager to hear from any rights owners, so that we may obtain accurate information. Upon request, we will remove material from public view while we address a rights issue.

## **CONSTRAINTS STATEMENT**

The Arizona Geological Survey does not claim to control all rights for all materials in its collection. These rights include, but are not limited to: copyright, privacy rights, and cultural protection rights. The User hereby assumes all responsibility for obtaining any rights to use the material in excess of "fair use."

The Survey makes no intellectual property claims to the products created by individual authors in the manuscript collections, except when the author deeded those rights to the Survey or when those authors were employed by the State of Arizona and created intellectual products as a function of their official duties. The Survey does maintain property rights to the physical and digital representations of the works.

## **QUALITY STATEMENT**

The Arizona Geological Survey is not responsible for the accuracy of the records, information, or opinions that may be contained in the files. The Survey collects, catalogs, and archives data on mineral properties regardless of its views of the veracity or accuracy of those data.

02/06/87

ARIZONA DEPARTMENT OF MINES AND MINERAL RESOURCES FILE DATA

PRIMARY NAME: RANDOLPH GYPSUM

ALTERNATE NAMES:

PINAL COUNTY MILS NUMBER: 448

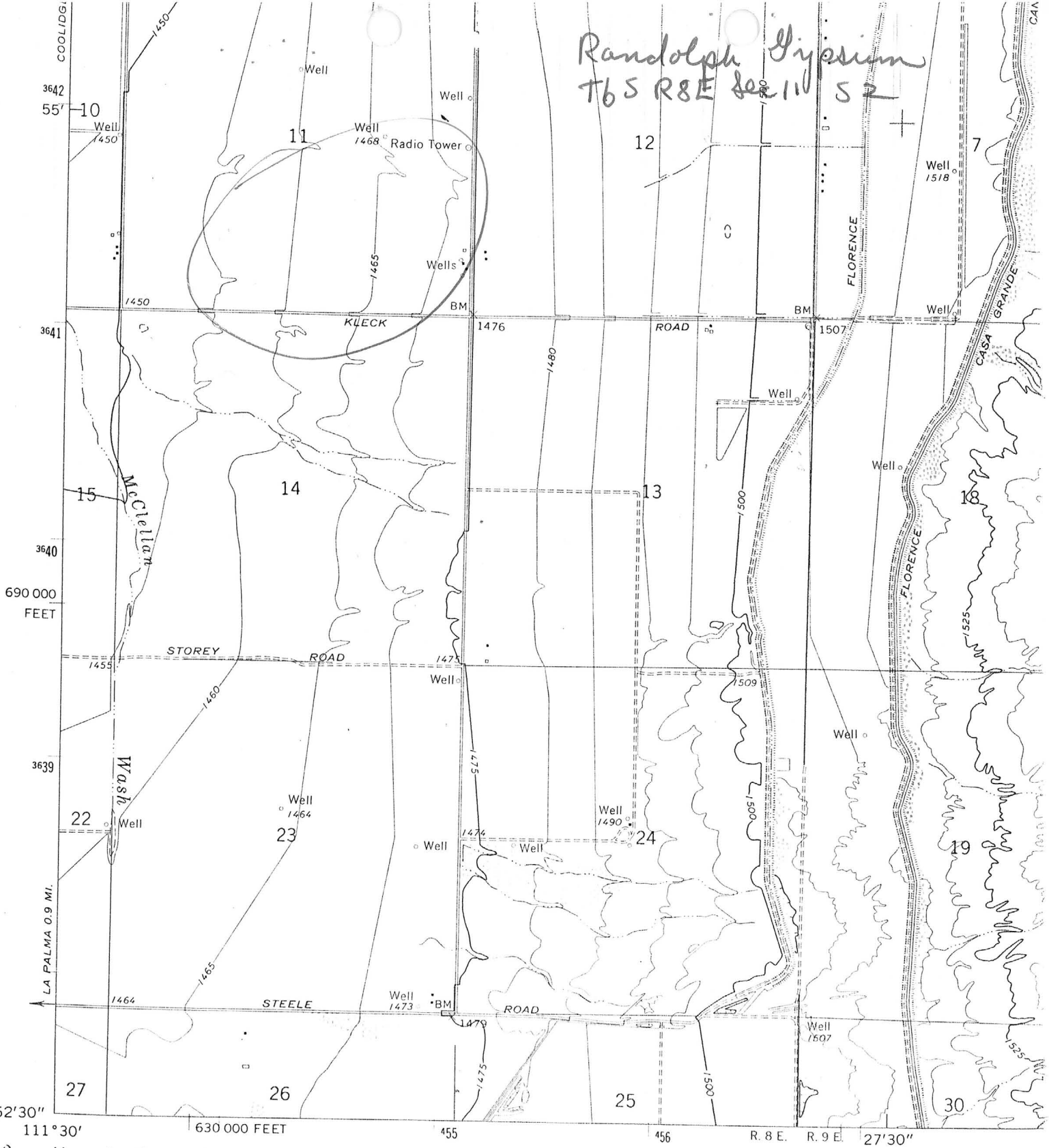
LOCATION: TOWNSHIP 6 S RANGE 8 E SECTION 11 QUARTER S2  
LATITUDE: N 33DEG 00MIN SEC LONGITUDE: W 111DEG 22MIN SEC  
TOPO MAP NAME: VALLEY FARMS - 7.5 MIN

CURRENT STATUS: RAW PROSPECT

COMMODITY:  
GYPSUM

BIBLIOGRAPHY:  
ADMMR RANDOLPH GYPSUM FILE

*Handwritten:* Randolph Gypsum  
T6S R8E Sec 11 S 2



52'30"  
111°30'

Mapped, edited, and published by the Geological Survey  
in cooperation with the Bureau of Reclamation

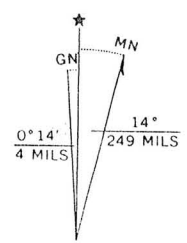
Control by USGS and USC&GS

Topography by photogrammetric methods from aerial  
photographs taken 1963 and planetable surveys 1964

Polyconic projection. 1927 North American datum  
10,000-foot grid based on Arizona coordinate system, central zone  
1000-meter Universal Transverse Mercator grid ticks,  
zone 12, shown in blue

A portion of the west half of this map  
lies within a subsidence area

Vertical control based on latest available adjustment



UTM GRID AND 1964 MAGNETIC NORTH  
DECLINATION AT CENTER OF SHEET



FOR SALE B  
A FO

RANDOLPH GYPSUM

PINAL COUNTY

NJN WR 12-5-86: Rhyne Simpson, Jr., president, Sante Fe Resources, Inc., visited and reported on their activity at the gypsum property they are drilling in Maricopa County. A Verbal Information Summary has been written.

---

Arizona Department of Mines and Mineral Resources

VERBAL INFORMATION SUMMARY

May be Reproduced

1. Information from: Rhyne Simpson, Jr.  
Address: P O Box 5334, Sante Fe, New Mexico 87502 (505) 983-8887
2. Mine: Randolph Gypsum 3. ADMMR Mine File Randolph Gypsum (new)
4. County: Pinal 5. District \_\_\_\_\_
6. Township 6S Range 8E Sec(s) 11 S2
7. Location: \_\_\_\_\_
8. No. of Claims - Patented \_\_\_\_\_ Unpatented \_\_\_\_\_
9. Owner (if different from above) \_\_\_\_\_
10. Address: \_\_\_\_\_
11. Operating Company: Sante Fe Resources Inc
12. Pertinent People and/or Firm: Rhyne Simpson, Jr. President
13. Commodities: gypsum
14. Operational Status: raw prospect
15. Summary of information received, comments, etc.: \_\_\_\_\_

Rhyne Simpson, Jr., president, Sante Fe Resources Inc., P O Box 5334, Sante Fe, New Mexico 87502 (505) 983-8887 visited and reported that to follow up in more detail on the subsurface gypsum occurrences in the Phoenix area which I had supplied him with about a year ago, he hired Bob Scarborough, formerly of the Bureau of Geology, as their geologist. Mr. Scarborough filled in geology by obtaining logs from water wells for the surrounding area. Sante Fe Resources is now acquiring their land position by staking claims and trying to obtain State prospecting permits in the areas of T6S R8E, Sec 11 S2. This will be a new Pinal county MILS entry called Randolph Gypsum. Here they believe they have a 200' thick gypsum deposit which they will be confirming shortly by having Boyles Brothers drill it. Future plans for the deposit, if drilling is successful, includes an underground mine which would supply a new Phoenix wallboard plant.

Date: 12-5-86

*Rhyne Simpson*  
(Signature)

ADMMR