



CONTACT INFORMATION

Mining Records Curator
Arizona Geological Survey
1520 West Adams St.
Phoenix, AZ 85007
602-771-1601
<http://www.azgs.az.gov>
inquiries@azgs.az.gov

The following file is part of the

Arizona Department of Mines and Mineral Resources Mining Collection

ACCESS STATEMENT

These digitized collections are accessible for purposes of education and research. We have indicated what we know about copyright and rights of privacy, publicity, or trademark. Due to the nature of archival collections, we are not always able to identify this information. We are eager to hear from any rights owners, so that we may obtain accurate information. Upon request, we will remove material from public view while we address a rights issue.

CONSTRAINTS STATEMENT

The Arizona Geological Survey does not claim to control all rights for all materials in its collection. These rights include, but are not limited to: copyright, privacy rights, and cultural protection rights. The User hereby assumes all responsibility for obtaining any rights to use the material in excess of "fair use."

The Survey makes no intellectual property claims to the products created by individual authors in the manuscript collections, except when the author deeded those rights to the Survey or when those authors were employed by the State of Arizona and created intellectual products as a function of their official duties. The Survey does maintain property rights to the physical and digital representations of the works.

QUALITY STATEMENT

The Arizona Geological Survey is not responsible for the accuracy of the records, information, or opinions that may be contained in the files. The Survey collects, catalogs, and archives data on mineral properties regardless of its views of the veracity or accuracy of those data.

PRINTED: 07-20-2012

ARIZONA DEPARTMENT OF MINES AND MINERAL RESOURCES AZMILS DATA

PRIMARY NAME: RANCH CHALLENGE CLAIMS

ALTERNATE NAMES:

YAVAPAI COUNTY MILS NUMBER: 395

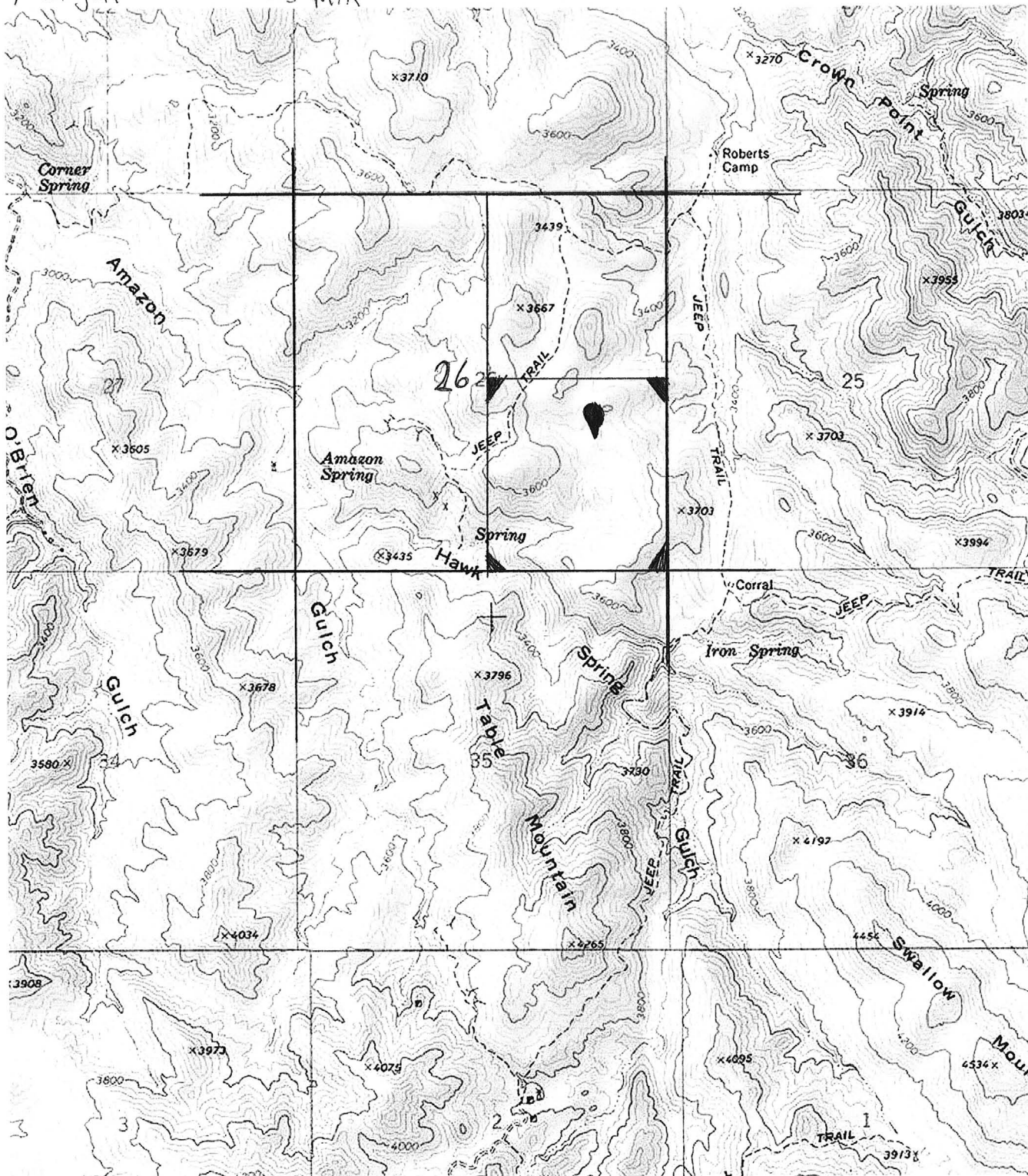
LOCATION: TOWNSHIP 9 N RANGE 3 W SECTION 26 QUARTER SE
LATITUDE: N 34DEG 05MIN 26SEC LONGITUDE: W 112DEG 32MIN 15SEC
TOPO MAP NAME: MORGAN BUTTE - 7.5 MIN

CURRENT STATUS: EXP PROSPECT

COMMODITY:
GOLD PLACER

BIBLIOGRAPHY:
USGS MORGAN BUTTE QUAD
ADMMR RANCH CHALLENGE FILE

Morgan Butte - 7.5 min



N 34 05' 26" W 112 32' 15"

Ranch Challenge Claims.



United States Department of the Interior

OFFICE OF HEARINGS AND APPEALS INTERIOR BOARD OF LAND APPEALS

4015 WILSON BOULEVARD
ARLINGTON, VIRGINIA 22203

WARREN WHEELER

IBLA 81-840

Decided August 3, 1981

Appeal from decision of Arizona State Office, Bureau of Land Management, declaring unpatented mining claim abandoned and void. AZ 3833 (952).

Affirmed.

1. Mining Claims: F.L.P.M.A.--Abandonment--
Location Subsequent to October 21, 1976--
Recordation of Mining Claims; REGULATIONS--
Applicability.

The failure to file such instruments as are required by 43 CFR 3833.1 and to pay the requisite service fee within the time periods prescribed therein must be deemed conclusively to constitute an abandonment of the mining claim, and it is properly declared void.

APPEARANCES: Warren Wheeler, pro se.

OPINION BY ADMINISTRATIVE JUDGE HENRIQUES

Warren Wheeler has appealed the Arizona State Office, Bureau of Land Management (BLM), decision of May 14, 1981, which returned without recording the notice of location for the Ranch Challenge #10 mining claim because the notice of location had not been filed with BLM within 90 days after the date of location, as required by the Federal Land Policy and Management Act of 1976 (FLPMA), 43 U.S.C. § 1744 (1976), and 43 CFR 3833.1-2(b). The mining claim was declared abandoned and void.

The mining claim was located November 14, 1980, and recorded in the records of Yavapai County, Arizona, on November 28, 1980. The copy of the notice of location was received by BLM for recordation on May 11, 1981, nearly 6 months after the claim was located.

INDEX CODE:

43 CFR 3833.1-2(b)
43 CFR 3833.4

FILE: SPARK CHALLENGE
dictated 10/15/80 mw

MEMORANDUM

To: FILES
From: John H. Jett, Director
Subject: Property on Black Mountain
Date: October 7, 1980

Office visit October 7, 1980 - Jack Oliphant.

Jack Oliphant was in the office. Stated he had a 100 ton Escapule unit on his property. It is the ~~unit~~ ^{unit} Minopco (Houston Mining & Minerals) had in Oatman. They will crush to minus 1/8₃ cyanide, then process tails for tungsten, barite and lead. Was vague about the method. Had tried tables but all minerals came out together. The property is on Black Mountain. Four veins, one at each point of the compass, dip approximately 30 degrees and appear to run together.

The President of Houston Minerals wants to drill the property. He will provide equipment and Mr. Oliphant will do the work.

Has potential investors in Phoenix.

JHJ:mw

cc. Lessor

Do Not Reproduce

RRB WR 8/29/80: Shane Parten of Ranch Challenge was in for a clarification of claim staking procedure. He reported that they are staking many claims for various minerals (gold, silver, tungsten, moly, etc.) in the proposed wilderness area and that they are rebuilding roads in area with a D-8.

RRB WR 12/5/80 - Joe Smail, Mesa, a small contractor reported that he was contacted to haul placer ore running from 5 to 10 oz/ton of gold from Amazon Gulch to processing plant approximately one mile away. Nine claims were reportedly bought from Ranch Challenge including the placer gold and lode tungsten. He wasn't sure just how they were involved but mentioned the names Matt Laxton, Roger Craig, and Lou Gaddis. He also said he was told that if he was interested he would have to start immediately as there was no time to properly evaluate the property.
