



## **CONTACT INFORMATION**

Mining Records Curator  
Arizona Geological Survey  
1520 West Adams St.  
Phoenix, AZ 85007  
602-771-1601  
<http://www.azgs.az.gov>  
[inquiries@azgs.az.gov](mailto:inquiries@azgs.az.gov)

The following file is part of the

Arizona Department of Mines and Mineral Resources Mining Collection

## **ACCESS STATEMENT**

These digitized collections are accessible for purposes of education and research. We have indicated what we know about copyright and rights of privacy, publicity, or trademark. Due to the nature of archival collections, we are not always able to identify this information. We are eager to hear from any rights owners, so that we may obtain accurate information. Upon request, we will remove material from public view while we address a rights issue.

## **CONSTRAINTS STATEMENT**

The Arizona Geological Survey does not claim to control all rights for all materials in its collection. These rights include, but are not limited to: copyright, privacy rights, and cultural protection rights. The User hereby assumes all responsibility for obtaining any rights to use the material in excess of "fair use."

The Survey makes no intellectual property claims to the products created by individual authors in the manuscript collections, except when the author deeded those rights to the Survey or when those authors were employed by the State of Arizona and created intellectual products as a function of their official duties. The Survey does maintain property rights to the physical and digital representations of the works.

## **QUALITY STATEMENT**

The Arizona Geological Survey is not responsible for the accuracy of the records, information, or opinions that may be contained in the files. The Survey collects, catalogs, and archives data on mineral properties regardless of its views of the veracity or accuracy of those data.

08/04/97

ARIZONA DEPARTMENT OF MINES AND MINERAL RESOURCES FILE DATA

PRIMARY NAME: RAGGED TOP

ALTERNATE NAMES:

SHAW MINE  
SULFIDE #2

PIMA COUNTY MILS NUMBER: 853

LOCATION: TOWNSHIP 11 S RANGE 8 E SECTION 26 QUARTER NW  
LATITUDE: N 32DEG 27MIN 05SEC LONGITUDE: W 111DEG 30MIN 06SEC  
TOPO MAP NAME: VACA HILLS - 15 MIN

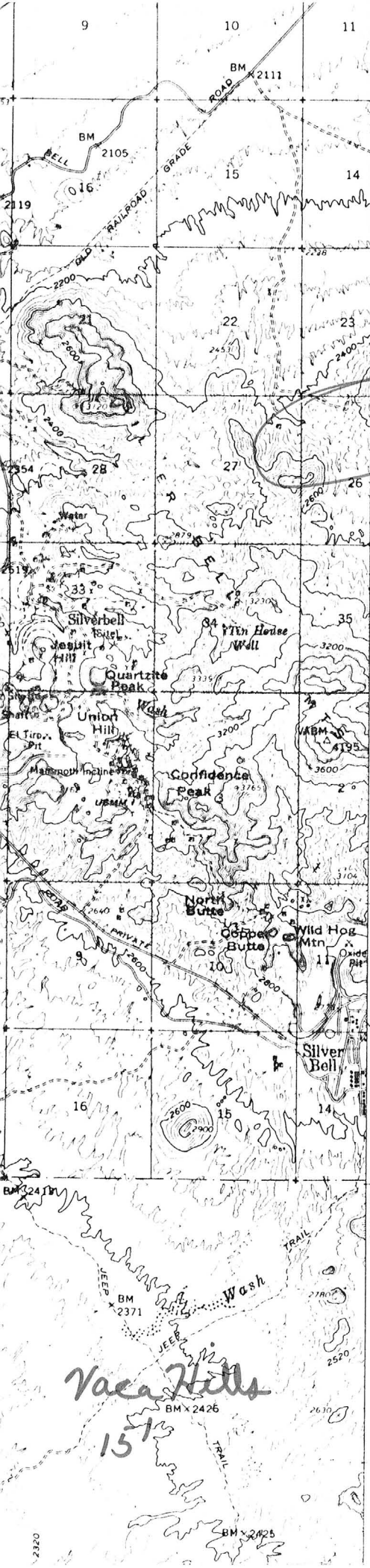
CURRENT STATUS: UNKNOWN

COMMODITY:

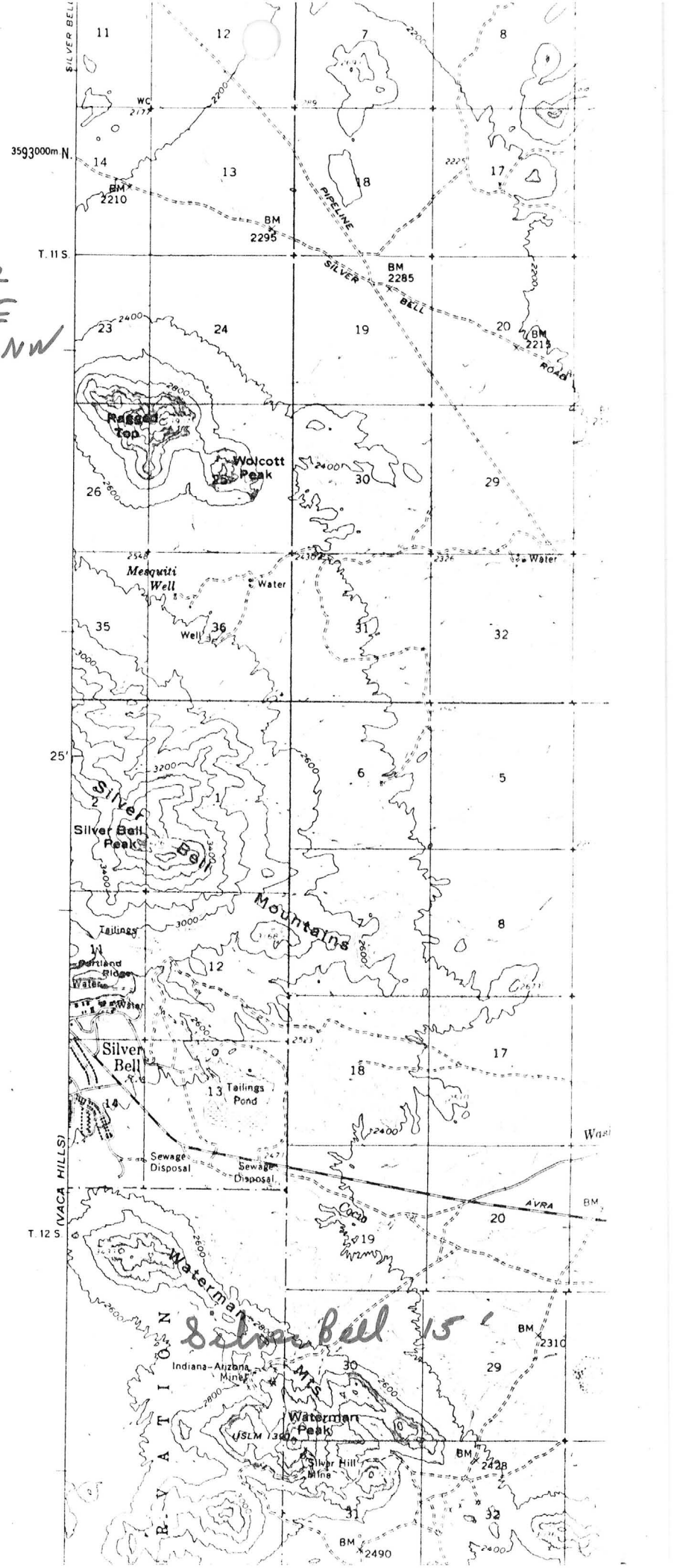
SILVER  
BARIUM

BIBLIOGRAPHY:

ADMMR RAGGED TOP FILE



Ragged Top  
T11S R8E  
& sec 26 NW



RAGGED TOP

PIMA COUNTY

HM WR 2/20/88: A visit was made to the Ragged Top (file) Pima County. A separate field visit report has been written for inclusion in the file.

---

HM WR 2/20/88: The Ragged Top wilderness study area was discussed with Hector Abrigo, Realty Specialist with the Phoenix District BLM office. Mr. Abrigo states that comments on the wilderness proposals are still being accepted.

---

RAGGED TOP MINE (Shaw Mine)

PIMA COUNTY  
T11S R8E Sec. 26 NW¼

3/23/83: Harold Leeman, P.O. Box 576, Marena, Arizona 85238 is the owner.

MG WR 1/2/81: Dave Rabb called to inquire about the Shaw Mine (Pima County) in Section 26, T11S R8E. It is a silver property with substantial mine workings but no record in DMR files. It is now called the Ragged Top Claim. This property used to be called the Shaw Mine.

---

MG WR 3/19/83: Received from Mr. Harold Leeman a map of the underground workings on his Ragged Top property, also known as the Shaw and Sulphide #2 properties, NW¼, Section 26, T11S R8E, Pima County, Silver Bell Mining District. Sent copy of this map to the Phoenix office.

---

CJH:WR 5/18/84: Harold V. Leeman (c) informed us that his Ragged Top Group of 12 claims (Ag-Au) Sec 26, T11S R8E, Silverbell District, Pima County are for sale through Earls Realty, Tucson.

---

MG WR 3/29/85: The Ragged Top mine area (Pima Co) was recommended under the Secretary of Interior James Watt administration to be dropped from WSA classification because it is less than 5,000 acres. The Sierra Club challenged this recommendation in court, however, so the area is still managed as a WSA. Nevertheless the area can be located and mined; mine operating plans and other mine activities should be approved by the BLM.

---

MG WR 5/24/85: Mr. Harold Leeman (c) reports that about 20 tons of ore were mined at the Ragged Top in 1981. A representative assay of this ore, according to Mr. Leeman would be as follows: 17.35% lead, 4.00% zinc, 14.30 oz silver/ton, 0.268 oz gold/ton, 0.07% copper and 0.013% molybdenum. Although he has erected gates and posted signs, his property has been vandalized frequently. Stockpiled ore has been stolen and new ore has been mined and stolen.

---

MG WR 2/21/86: Provided information on BLM regulations concerning mining operations to Mr. Harold Leeman (c), owner of the Ragged Top property (Pima Co). He plans to drill.

---

## FIELD VISIT REPORT

### RAGGED TOP MINE, PIMA COUNTY

BY: HARRISON MATSON, MINERAL RESOURCE SPECIALIST

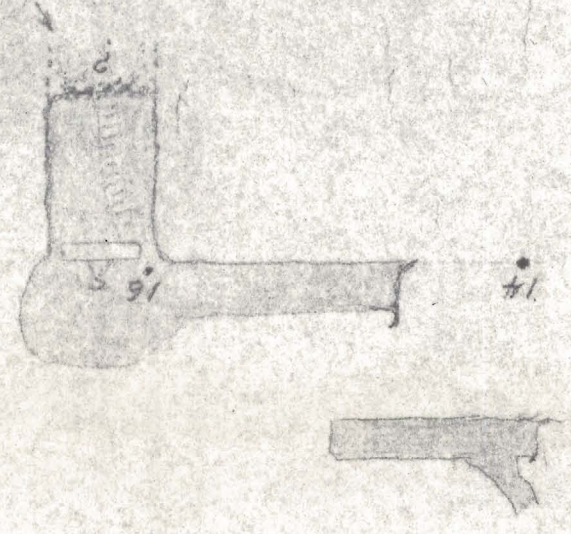
The Ragged Top claim group, Pima County was visited, accompanied by the owner, Mr. Harold Leeman. At the Ragged Top #10 claim, in the NE 1/4, T11S R8E, a 2-4 foot wide barite vein has been prospected along a N10E strike for about 800 feet. The vein dips East 50-55 degrees and is composed of white to light grey massive and tabular barite in veinlets with selvages of granitic wall rock. Where the vein is widest the selvages also widen and increase in number. There appears to have been little if any past production. This occurrence of barite is previously unreported.

At the Ragged Top #1 claim, NW 1/4 Sec 26, three adits explore mixed oxide silver-lead-zinc-copper mineralization developed in precambrian granite in close association with the tertiary rhyolite intrusive of Ragged Top Mountain. Mineralization is best developed along the intersection of a NE trending, near vertical vein and a NW striking sheeted zone which dips to the east at perhaps 50-60 degrees. This results in a pipe-like ore shoot plunging to the NE. The grade of the ore is not as well defined but an estimate of 4-8 oz silver 8% combined lead zinc and 1% copper might be reasonable. Approximately 2000 s.tons are developed between the workings. The deposit geology, proper sampling techniques and extractive metallurgy was discussed with the owner.

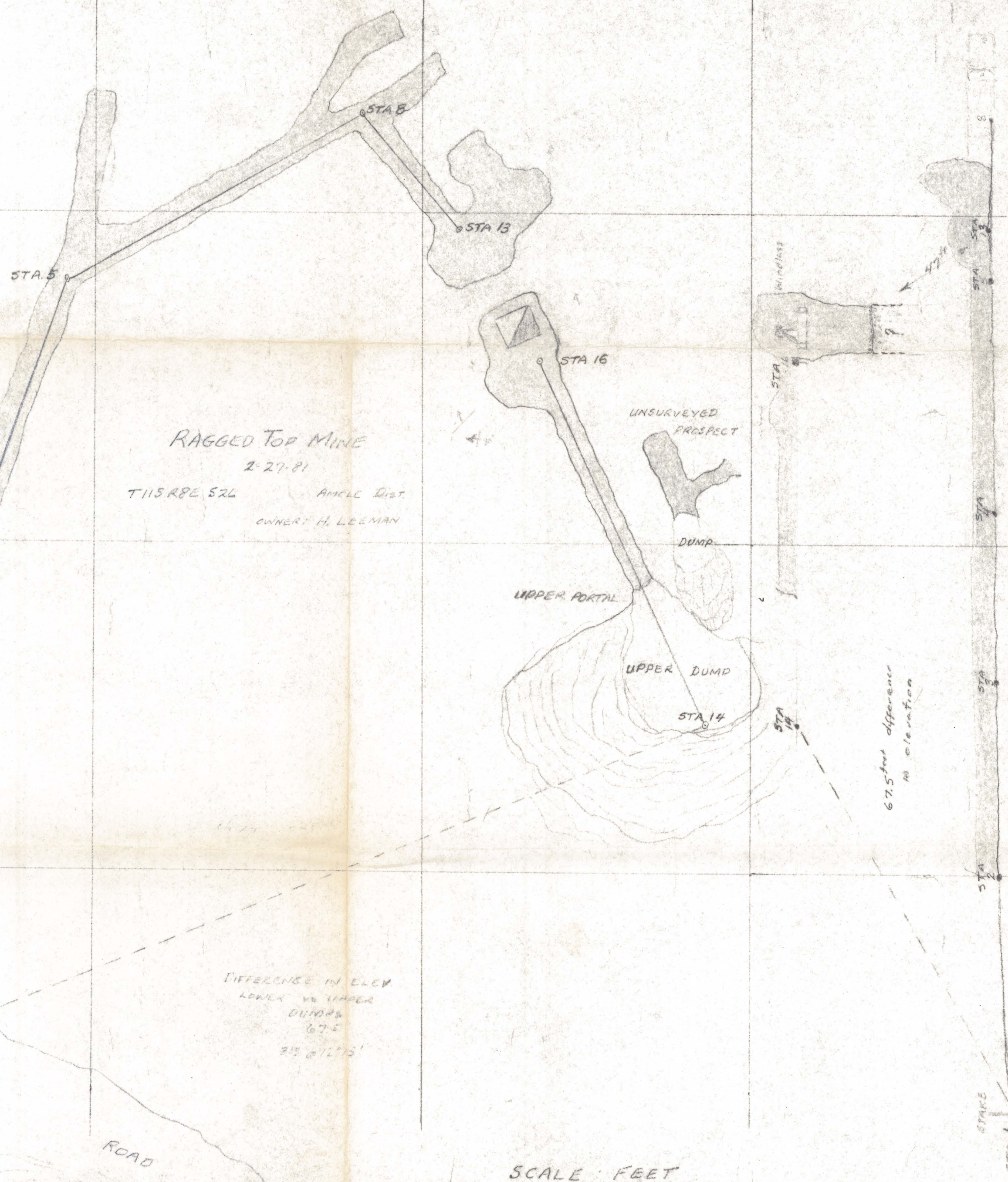
M. 79 S  
S. 06 W  
M. 021 N

EAST

NORTH-SOUTH PROFILE



NORTH



### RAGGED TOP MINE

2-27-81

T115 R2E S24 ANGLE DIST  
OWNER: H. LEE MAN

STA. 2 LOWER PORTAL

LOWER DUMP

STA. 10

ROAD DOWN

DIFFERENCE IN ELEV  
LOWER vs UPPER  
DUMPS  
67.5'  
33 @ 12.5'

UPPER PORTAL

UNSURVEYED PROSPECT

DUMP

UPPER DUMP

STA. 14

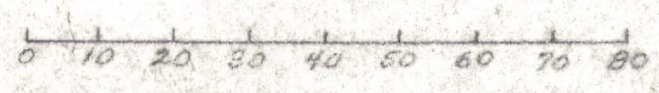
67.5' difference  
in elevation

EAST-WEST PROFILE

STA. 1  
STAKE

LOWER DUMP

SCALE FEET



Survey by  
Leeman & Ross  
1-6-81  
2-27-81  
Drawn by  
DAVE ROSS  
2-28-81

WEST