



CONTACT INFORMATION

Mining Records Curator
Arizona Geological Survey
1520 West Adams St.
Phoenix, AZ 85007
602-771-1601
<http://www.azgs.az.gov>
inquiries@azgs.az.gov

The following file is part of the

Arizona Department of Mines and Mineral Resources Mining Collection

ACCESS STATEMENT

These digitized collections are accessible for purposes of education and research. We have indicated what we know about copyright and rights of privacy, publicity, or trademark. Due to the nature of archival collections, we are not always able to identify this information. We are eager to hear from any rights owners, so that we may obtain accurate information. Upon request, we will remove material from public view while we address a rights issue.

CONSTRAINTS STATEMENT

The Arizona Geological Survey does not claim to control all rights for all materials in its collection. These rights include, but are not limited to: copyright, privacy rights, and cultural protection rights. The User hereby assumes all responsibility for obtaining any rights to use the material in excess of "fair use."

The Survey makes no intellectual property claims to the products created by individual authors in the manuscript collections, except when the author deeded those rights to the Survey or when those authors were employed by the State of Arizona and created intellectual products as a function of their official duties. The Survey does maintain property rights to the physical and digital representations of the works.

QUALITY STATEMENT

The Arizona Geological Survey is not responsible for the accuracy of the records, information, or opinions that may be contained in the files. The Survey collects, catalogs, and archives data on mineral properties regardless of its views of the veracity or accuracy of those data.

07/30/97

ARIZONA DEPARTMENT OF MINES AND MINERAL RESOURCES FILE DATA

PRIMARY NAME: RADIO

ALTERNATE NAMES:

YAVAPAI COUNTY MILS NUMBER: 689

LOCATION: TOWNSHIP 14 N RANGE 3 E SECTION 32 QUARTER SE
LATITUDE: N 34DEG 32MIN 57SEC LONGITUDE: W 112DEG 03MIN 10SEC
TOPO MAP NAME: CHERRY - 7.5 MIN

CURRENT STATUS: PAST PRODUCER

COMMODITY:
GOLD

BIBLIOGRAPHY:

USGS CHERRY QUAD
WILSON, E.D. AZ LODE GOLD MINES AZBM BULL 137
1967 P 32
ADMMR RADIO FILE

RADIO

9/84

YAVAPAI COUNTY
T13,14N R3E Sec 31,32,5

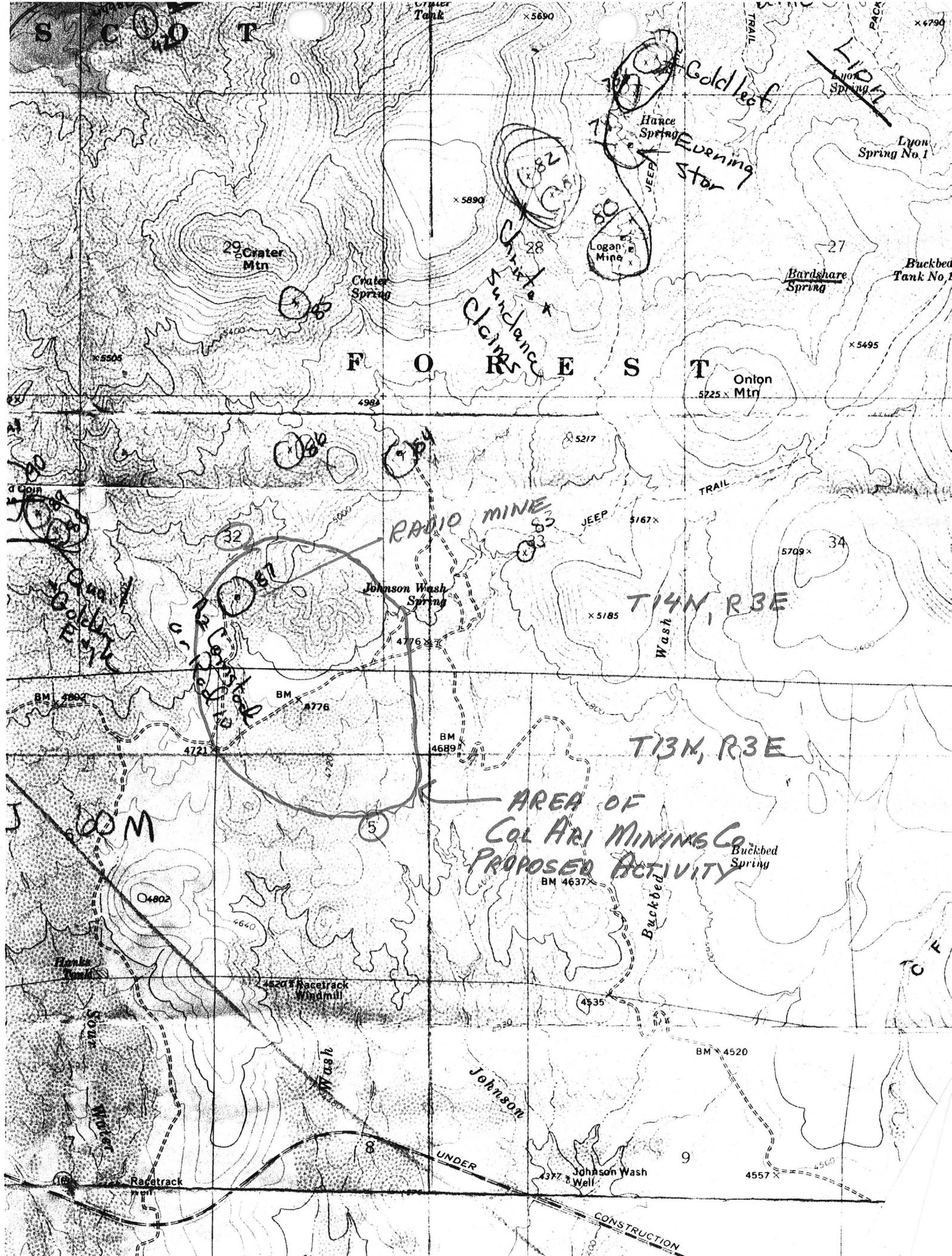
AKA: Arizona Comstock Mine

ABM Bull. #137, p. 32

USGS Bull #782, p. 102-107

Economic Geology, Vol. 1. 1906, p. 417-436, J. A. Reid

USGS Cherry, Az. Topo map



RADIO

YAVAPAI COUNTY

KAP WR 8/31/84: G. Phil Bramwell, Financial Consultant, Florissant Colorado 80816, phone (303) 748-3754 was in to review a proposal for financing a cyanide heap leach - gold mining venture by a group known as Col-Ari Mining (c) P O Box 26407, Prescott Valley. Col-Ari plans to mine and heap leach gold bearing material from a group of claims in the E $\frac{1}{2}$, Sec 32, T14N R3E and NW $\frac{1}{4}$, Sec 5, T13N R3E. Mr. Bramwell is assisting the Col-Ari group in trying to obtain financing through banks and the Small Business Administration. The written proposal lacked any information about the ore deposit or metallurgical testing. The claims leased by Col-Ari from Leon Scheal and Associates, P O Box 501, Dewey, Arizona 86327 are the TG #1-#14, BS #1 -#25, Megan Rae, June Marie, William Hollis, Rosetta Mae, Andrew L., Sandra Lynn and Gloria Jean. It appears this property may coincide with Yavapai MILS Index #689 known as the Radio and referenced in Arizona Bureau of Geology Bulletin 137 on page 32.

Arizona Department of Mines and Mineral Resources

VERBAL INFORMATION SUMMARY

May be Reproduced

1. Information from: G. Phil Bramwell
Address: Florissant, Colorado 80816 Ph: 303-748-3754
2. Mine: Radio 3. ADMMR Mine File _____
4. County: Yavapai 5. District Ash Creek
6. Township 13, 14N Range 3E Sec(s) 31, 32 and 5
7. Location: See attached map
8. No. of Claims - Patented _____ Unpatented 46
9. Owner (if different from above) Leon Scheal and Assoc.
10. Address: P O Box 510 Dewey, Az. 86327
11. Operating Company: Col-Ari Mining Co. Box 26407 Prescott Valley, Az.
12. Pertinent People and/or Firm: _____
13. Commodities: Gold
14. Operational Status: Trying to raise money
15. Summary of information received, comments, etc.: Proposed cyanide heap leach operation for gold

References: Wilson, E. D. 1937, Arizona Lode Gold and Gold Mining
ABM Bull 137, p. 32
ADMMR Yavapai MILS, Radio Mine, Index #689

Date: 8/29/84

Kend. Phillips
(Signature)

ADMMR