



CONTACT INFORMATION

Mining Records Curator
Arizona Geological Survey
1520 West Adams St.
Phoenix, AZ 85007
602-771-1601
<http://www.azgs.az.gov>
inquiries@azgs.az.gov

The following file is part of the

Arizona Department of Mines and Mineral Resources Mining Collection

ACCESS STATEMENT

These digitized collections are accessible for purposes of education and research. We have indicated what we know about copyright and rights of privacy, publicity, or trademark. Due to the nature of archival collections, we are not always able to identify this information. We are eager to hear from any rights owners, so that we may obtain accurate information. Upon request, we will remove material from public view while we address a rights issue.

CONSTRAINTS STATEMENT

The Arizona Geological Survey does not claim to control all rights for all materials in its collection. These rights include, but are not limited to: copyright, privacy rights, and cultural protection rights. The User hereby assumes all responsibility for obtaining any rights to use the material in excess of "fair use."

The Survey makes no intellectual property claims to the products created by individual authors in the manuscript collections, except when the author deeded those rights to the Survey or when those authors were employed by the State of Arizona and created intellectual products as a function of their official duties. The Survey does maintain property rights to the physical and digital representations of the works.

QUALITY STATEMENT

The Arizona Geological Survey is not responsible for the accuracy of the records, information, or opinions that may be contained in the files. The Survey collects, catalogs, and archives data on mineral properties regardless of its views of the veracity or accuracy of those data.

08/05/97

ARIZONA DEPARTMENT OF MINES AND MINERAL RESOURCES FILE DATA

PRIMARY NAME: QUEBEC & LITTLE FLORENCE MINE

ALTERNATE NAMES:
LITTLE FLORENCE

PIMA COUNTY MILS NUMBER: 143

LOCATION: TOWNSHIP 19 S RANGE 15 E SECTION 26 QUARTER NE
LATITUDE: N 31DEG 45MIN 31SEC LONGITUDE: W 110DEG 46MIN 36SEC
TOPO MAP NAME: SAHUARITA - 15 MIN

CURRENT STATUS: PAST PRODUCER

COMMODITY:
LEAD SULFIDE
STONE
ZINC SULFIDE
GOLD LODE
COPPER
BARIUM BARITE

BIBLIOGRAPHY:

ADMMR QUEBEC MINE & LITTLE FLORENCE MINE FILE
KEITH, S.B. 1974, INDEX OF MINING PROPERTIES
IN PIMA COUNTY, AZ GEOL. SUR. BULL. 189
P. 121
SCHRADER. F. C., 1915, MINERAL DPSTS. OF THE
SANTA RITA AND PATAGONIA MTNS. U. S. GEOL.
SUR. BULL. 582, P. 155

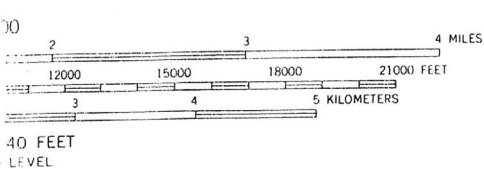
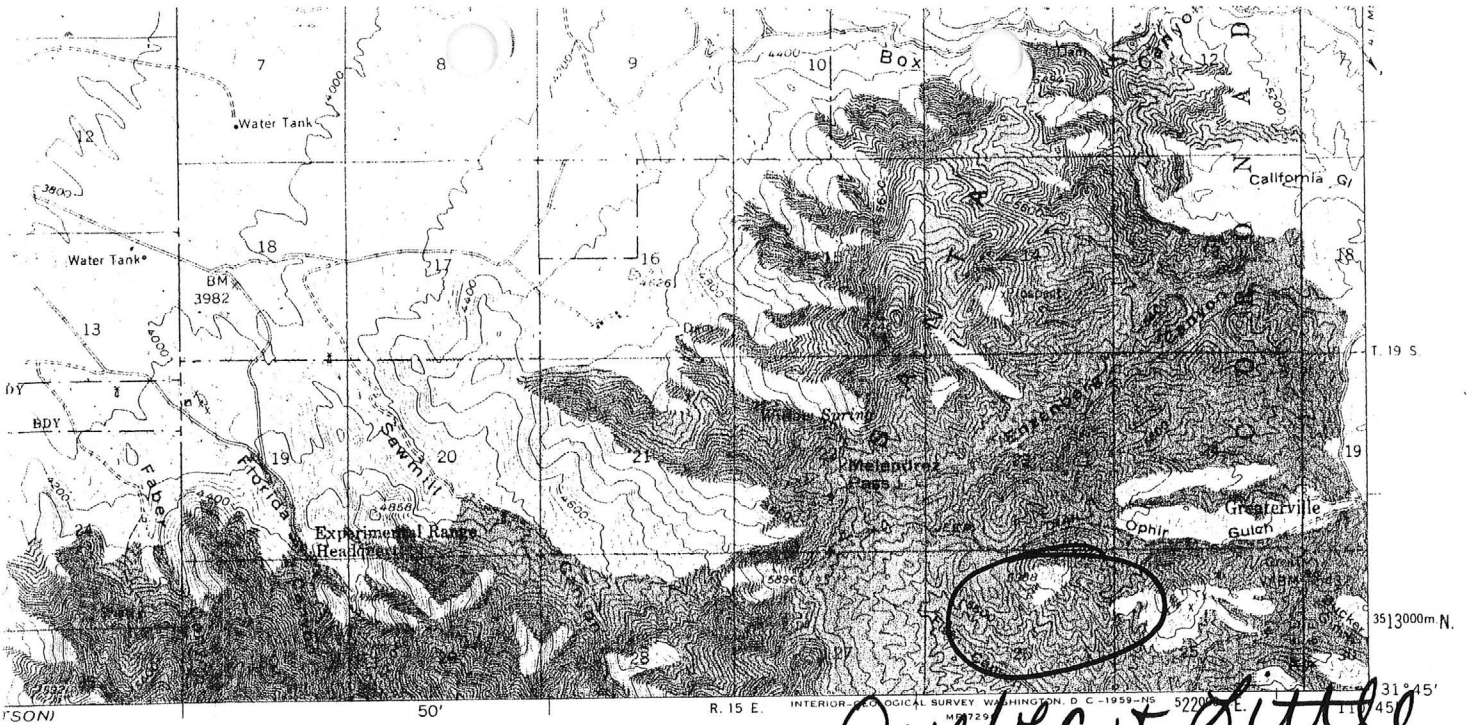
QUEBEC & LITTLE FLORENCE MINES

PIMA COUNTY
GREATERVILLE DISTRICT
T19S R15E Sec. 26

Pima County MILS Index #143

ABM Bull 189, p. 121

Sahuarita 15' Topo (included in file)



MAP ACCURACY STANDARDS
15, COLORADO OR WASHINGTON 25, D. C.
SYMBOLS IS AVAILABLE ON REQUEST

Quebec + Little Florence
ROAD CLASSIFICATION
Heavy-duty ——— Light-duty ———
Medium-duty ——— Unimproved dirt ———
T19S R15E Sec. 26

SAHUARITA, ARIZ. 39
N3145—W11045/15
1958 15
PA

DEPARTMENT OF MINERAL RESOURCES

STATE OF ARIZONA
FIELD ENGINEERS REPORT

Mine Quebec & Little Florence†

Date June 30, 1960

District Greaterville District, Pima County

Engineer Axel L. Johnson

Subject: Information from John Thiede.

References: Bull. #582 - "Mineral Deposits of the Santa Rita and Patagonia Mountains" by Schrader - page 155 in regard to the Quebec.

Location: Secs. 23, 25 & 26 - T. 19 S., R. 15 E. Mines are about 1½ miles SW of Greaterville at an elevation of 5,840 ft.

Owners: Properties are owned by a family by the name of Hurlbut.

Prospective Lessees: John Thiede, Los Angeles, Calif., Pres. & Gen. Mgr.
T.K.T. Mining Co.
5269 Batavia Road
South Gate, Calif.

Principal Minerals: Copper, lead, zinc, silver & gold.

Present Activity: Idle

Ore Values: Mr. Thiede reports \$40 per ton in ore values, with 6% copper and high lead content.

Milling & Marketing: No mill on property. Mr. Thiede has plans for constructing a 10 to 15 ton mill.

Past History:

(1) From 1905 to 1920 ore was shipped from Quebec Mine.

(2) From 1920 to 1940, Mr. Hurlbut (Black Irishman) developed a rich copper, silver, lead, gold vein on the "Little Florence" by driving a 250 ft. adit and several drifts.