



CONTACT INFORMATION

Mining Records Curator
Arizona Geological Survey
1520 West Adams St.
Phoenix, AZ 85007
602-771-1601
<http://www.azgs.az.gov>
inquiries@azgs.az.gov

The following file is part of the

Arizona Department of Mines and Mineral Resources Mining Collection

ACCESS STATEMENT

These digitized collections are accessible for purposes of education and research. We have indicated what we know about copyright and rights of privacy, publicity, or trademark. Due to the nature of archival collections, we are not always able to identify this information. We are eager to hear from any rights owners, so that we may obtain accurate information. Upon request, we will remove material from public view while we address a rights issue.

CONSTRAINTS STATEMENT

The Arizona Geological Survey does not claim to control all rights for all materials in its collection. These rights include, but are not limited to: copyright, privacy rights, and cultural protection rights. The User hereby assumes all responsibility for obtaining any rights to use the material in excess of "fair use."

The Survey makes no intellectual property claims to the products created by individual authors in the manuscript collections, except when the author deeded those rights to the Survey or when those authors were employed by the State of Arizona and created intellectual products as a function of their official duties. The Survey does maintain property rights to the physical and digital representations of the works.

QUALITY STATEMENT

The Arizona Geological Survey is not responsible for the accuracy of the records, information, or opinions that may be contained in the files. The Survey collects, catalogs, and archives data on mineral properties regardless of its views of the veracity or accuracy of those data.

08/08/88

ARIZONA DEPARTMENT OF MINES AND MINERAL RESOURCES FILE DATA

PRIMARY NAME: PRINCE ALBERT

ALTERNATE NAMES:

DAISY
WHITE HILLS

MOHAVE COUNTY MILS NUMBER: 142B

LOCATION: TOWNSHIP 27 N RANGE 20 W SECTION 14 QUARTER NE
LATITUDE: N 35DEG 43MIN 58SEC LONGITUDE: W 114DEG 23MIN 06SEC
TOPO MAP NAME: WHITE HILLS - 15 MIN

CURRENT STATUS: PAST PRODUCER

COMMODITY:

GOLD LODE
SILVER OXIDE

BIBLIOGRAPHY:

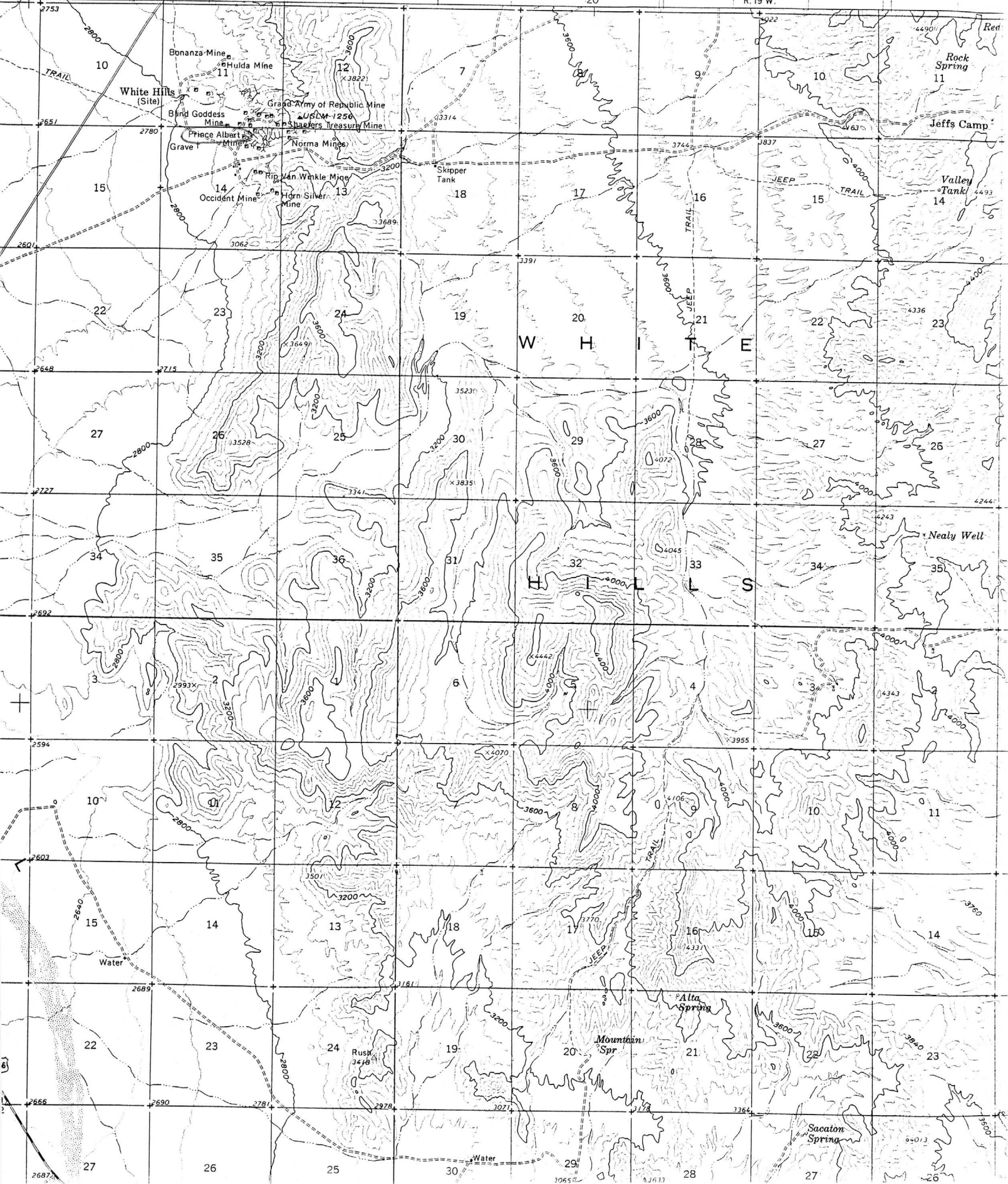
AZ. STATE LAND DEPT. MINERALS MAP
USGS KINGMAN QUAD
USGS WHITE HILLS QUAD
ADMR MOHAVE CARD FILE
SCHRADER, F.C., USGS BULL 397, P. 133
ADMR MOHAVE CUSTOM MILL PROJ. CARD FILE
ADMMR PRINCE ALBERT FILE
SEE ADMMR WHITE HILLS FILE

25' R. 20 W.

TEMPLE BAR 22 MI. (SENATOR MTN.)

20'

R. 19 W.



Name of Mine or Prospect: Prince Albert Mine	Township 27N	Range 20W	Section 14	Priority C
Principal Minerals: Gold, Silver	1:250,000 Quad Kingman		7.5' - 15' Quad White Hills	
Associated Minerals: Quartz, Calcite	District White Hills		Principal Product Gold, Silver	
Type of Operation: Underground: Shafts, Drifts	County Mohave	State Ar.	Type of Deposit Vein	
Ownership or Controlling Interest: Consult tax assessment records				
Access: From Kingman, Ar. proceed north on U.S. 93 for 42 miles. Turn right on light duty road for 3.5 miles. Bear right and proceed 2.0 miles to district. Mine is shown on topographic quadrangle.				
Structural Control or Geological Association: "The mine contains three productive, nearly flat-lying veins which dip about 30°NNE, the two upper veins are about 75 feet apart and the lower vein is about 25 feet below the middle one. They lie in a dish-shaped, shallow syncline and are believed to connect with the Norma vein on the east." ¹				
Age of Mineralization:				
Production History			Geochemical Analyses	
<p>"Developed to a depth of 300 feet or more by inclineds and is reported to contain much good ore still."¹ (1909)</p> <p>Patented claims (1) Bk #317 MS #1256A</p>				
References				
1) Schrader (1909) p. 132-133.				

from: W.H. Crutchfield Jr. Mohave County Prospect Assessment Compilation (post 1982)

Name of mine or Prospect: Daisy Mine	Township 27N	Range 20W	Section 14 aaa	Pr. Loc. B
Principal Minerals: Gold	1:250,000 Quad Kingman	7.5' - 15' Quad White Hills		
Associated Minerals: Quartz, Calcite	District White Hills	Principal Product Gold		
Type of Operation: Underground: Shaft and Workings	County Mohave	State Ar.	Type of Deposit Vein	

Ownership or Controlling Interest:
Consult tax assessment records

Access: From Kingman, Ar., proceed north on U.S. 93 for 42 miles, turn right on light duty road for 3.5 miles to fork. Take right fork and proceed 2 miles into White Hills district. Mine is located (unnamed) on topographic quadrangle.

Structural Control or Geological Association:
 "The vein strikes about east-west and appears to be at an convergence of the Prince Albert veins."¹
 "Older Precambrian Age, granite schist."²

Age of Mineralization:

Production History	Geochemical Analyses
"The production is said to be large and came in part from a very rich 300,000 ore shoot (1909)." ¹ Patented claim Bk #317 MS #1256	

References

- 1) Schrader (1909) p. 133.
- 2) Wilson & Moore (1959), Geologic map.

SEE: White Hills (file) Mohave County

RH