



## **CONTACT INFORMATION**

Mining Records Curator  
Arizona Geological Survey  
1520 West Adams St.  
Phoenix, AZ 85007  
602-771-1601  
<http://www.azgs.az.gov>  
[inquiries@azgs.az.gov](mailto:inquiries@azgs.az.gov)

The following file is part of the

Arizona Department of Mines and Mineral Resources Mining Collection

## **ACCESS STATEMENT**

These digitized collections are accessible for purposes of education and research. We have indicated what we know about copyright and rights of privacy, publicity, or trademark. Due to the nature of archival collections, we are not always able to identify this information. We are eager to hear from any rights owners, so that we may obtain accurate information. Upon request, we will remove material from public view while we address a rights issue.

## **CONSTRAINTS STATEMENT**

The Arizona Geological Survey does not claim to control all rights for all materials in its collection. These rights include, but are not limited to: copyright, privacy rights, and cultural protection rights. The User hereby assumes all responsibility for obtaining any rights to use the material in excess of "fair use."

The Survey makes no intellectual property claims to the products created by individual authors in the manuscript collections, except when the author deeded those rights to the Survey or when those authors were employed by the State of Arizona and created intellectual products as a function of their official duties. The Survey does maintain property rights to the physical and digital representations of the works.

## **QUALITY STATEMENT**

The Arizona Geological Survey is not responsible for the accuracy of the records, information, or opinions that may be contained in the files. The Survey collects, catalogs, and archives data on mineral properties regardless of its views of the veracity or accuracy of those data.

PRINTED: 07-19-2012

ARIZONA DEPARTMENT OF MINES AND MINERAL RESOURCES AZMILS DATA

PRIMARY NAME: POWERS GULCH ZINC LEAD

ALTERNATE NAMES:

PINAL COUNTY MILS NUMBER: 1

LOCATION: TOWNSHIP 1 N RANGE 13 E SECTION 35 QUARTER --  
LATITUDE: N 33DEG 22MIN 40SEC LONGITUDE: W 110DEG 59MIN 57SEC  
TOPO MAP NAME: INSPIRATION - 7.5 MIN

CURRENT STATUS: UNKNOWN

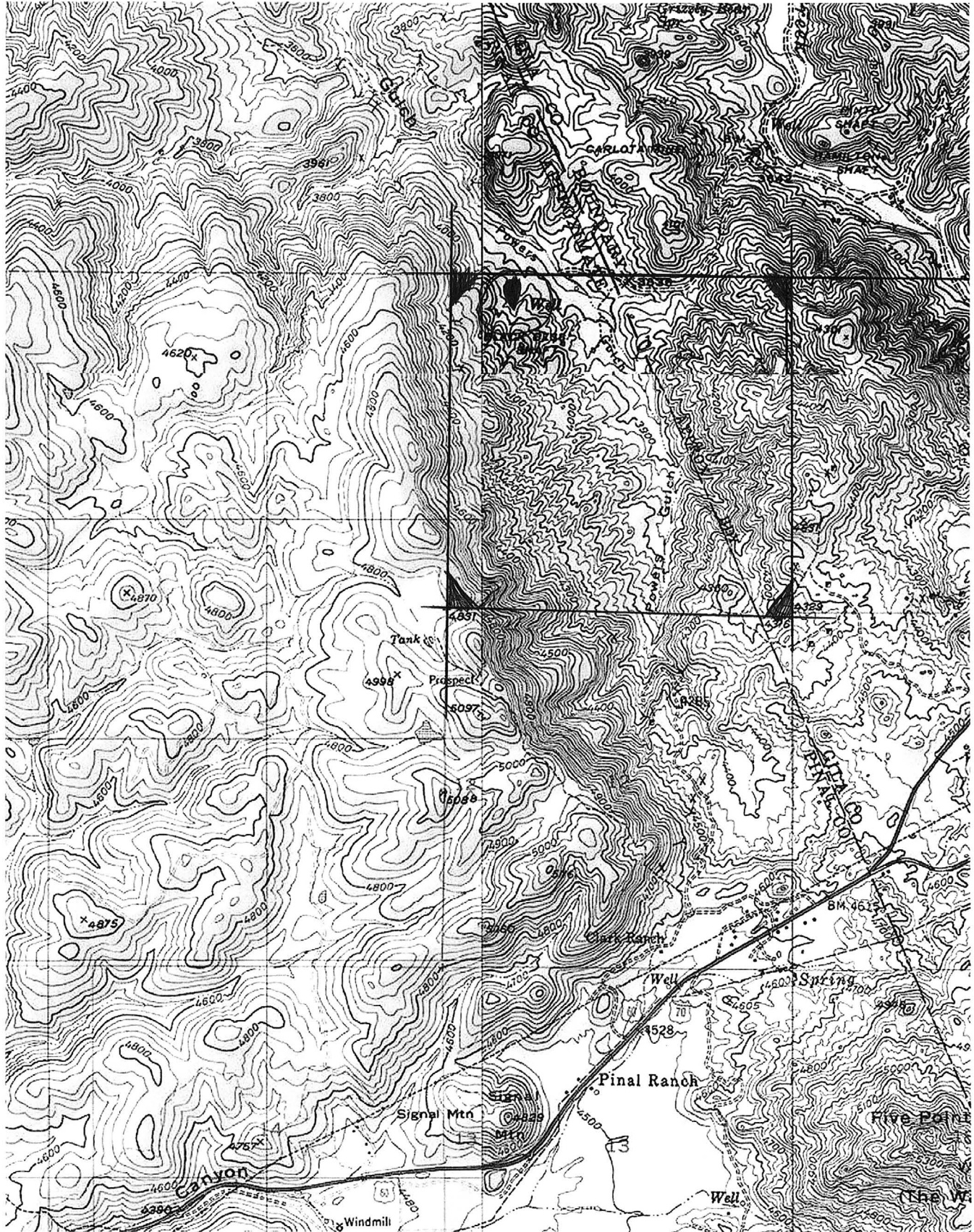
COMMODITY:

LEAD  
ZINC

BIBLIOGRAPHY:

PETERSON, N.P., GEOLOGY AND ORE DEPOSITS OF  
THE GLOBE MIAMI DIST. USGS PP 342, 1962,  
P. 123  
ADMMR POWERS GULCH LEAD-ZINC FILE

Inspiration - 7.5 min



N 33 22' 40" W 110 59' 57"

Powers Gulch Zinc Lead

ArcGIS -

POWERS GULCH LEAD-ZINC

REFERENCES

PINAL COUNTY

USGS PP 342, p. 123

MILS Sheet sequence number 0040210989

J.L. LIESSON PROSPECT  
Gila County, Arizona.

Mr. J. L. Liesson is attempting to acquire an option and lease on this property upon terms which will permit him to develop the mine.

Location:

The property lies in Powers Gulch about 14 miles northwest of Miami and is southerly from Castle Dome. It is about 1 mile from the Carlotta Mine on the opposite slope of the hill.

Geology:

There are several paralell veins occurring in a diabase dike, which according to Liesson is 1/4 mile or more wide and extents for several miles in length. The veins strike generally with the trend of the diabase varying from N40 to N70 E. The dip of the veins is vertical where observed.

The veins where exposed ranged from 1 to 4 feet wide and were mineralized with quartz and pyrite containing some copper sulphides, and bands of zinc sulphide ranging from 1 to 8 inches wide.

The most extensive development is a tunnel driven from the south side of the gulch, southwest 320 feet. The tunnel was on one of the strongest veins, which at the face, is 2 1/2 ft wide and composed of alternate bands of quartz and pyrite and altered diabase, with minor amounts of zinc. This width contigues 65 feet NE toward the portal with increasing zinc content. From 65 to 125 feet the vein widens to a maximum of 8 feet forming a lense of ore containing massive zinc sulphide. From 125 feet to the portal the vein ranges from 12 to 36 inches in width with values occurring irregularly. 20 to 30 tons of ore on the dump from which a sample was submitted is indicated to run .02 gold, 1.4 silver, 7.6% lead, 29.9% zinc, 0.26 copper and was evidently mined from the ore shoot at 65 to 125 feet from the face where it has been stoped up about 10 feet.

Across the gulch about 150 feet another tunnel has been driven on the same vein to the NE but encountered only a little weak pyrite mineralization.

The north vein about 300 feet north of the tunnel portals is opened by a shallow cut exposing the vein 7 feet wide. A 6 to 12 inch streak of leached vein material occurs on each wall and the central portion of the vein is altered diabase.

Conclusion:

From limited observations the property does not

appear to offer much possibility for important orebodies. A further study of the area may reveal other structural features which offer greater promise.

Some study of the general area may be justified in view of its proximity to the copper deposits of Miami and Castle Dome. However there is little evidence that any extensive lead-zinc deposits occur, marginal to the big copper deposits of the district.

Some valuable information may be gained in regard to the district when results are available from the extensive study of the Castle Dome area made by the USGS and on which Mr. N. P. Peterson has spent several years.

October 1946

Edwin A. Stone