



CONTACT INFORMATION

Mining Records Curator
Arizona Geological Survey
1520 West Adams St.
Phoenix, AZ 85007
602-771-1601
<http://www.azgs.az.gov>
inquiries@azgs.az.gov

The following file is part of the

Arizona Department of Mines and Mineral Resources Mining Collection

ACCESS STATEMENT

These digitized collections are accessible for purposes of education and research. We have indicated what we know about copyright and rights of privacy, publicity, or trademark. Due to the nature of archival collections, we are not always able to identify this information. We are eager to hear from any rights owners, so that we may obtain accurate information. Upon request, we will remove material from public view while we address a rights issue.

CONSTRAINTS STATEMENT

The Arizona Geological Survey does not claim to control all rights for all materials in its collection. These rights include, but are not limited to: copyright, privacy rights, and cultural protection rights. The User hereby assumes all responsibility for obtaining any rights to use the material in excess of "fair use."

The Survey makes no intellectual property claims to the products created by individual authors in the manuscript collections, except when the author deeded those rights to the Survey or when those authors were employed by the State of Arizona and created intellectual products as a function of their official duties. The Survey does maintain property rights to the physical and digital representations of the works.

QUALITY STATEMENT

The Arizona Geological Survey is not responsible for the accuracy of the records, information, or opinions that may be contained in the files. The Survey collects, catalogs, and archives data on mineral properties regardless of its views of the veracity or accuracy of those data.

10/21/88

ARIZONA DEPARTMENT OF MINES AND MINERAL RESOURCES FILE DATA

PRIMARY NAME: PITTSBURGH - MANHATTAN

ALTERNATE NAMES:

COCHISE COUNTY MILS NUMBER: 815

LOCATION: TOWNSHIP 17 S RANGE 23 E SECTION 14 QUARTER NE
LATITUDE: N 32DEG 57MIN SEC LONGITUDE: W 109DEG 58MIN SEC
TOPO MAP NAME: COCHISE STRONGHOLD - 7.5 MIN

CURRENT STATUS:

COMMODITY:

ZINC
LEAD
SILVER

BIBLIOGRAPHY:

ADMMR PITTSBURGH - MANHATTAN FILE
USGM OPEN FILE - MLA 35-82, 1981

110° 00' 32° 00' 595000mE 596 597 598 57' 30" 599

3540000mN

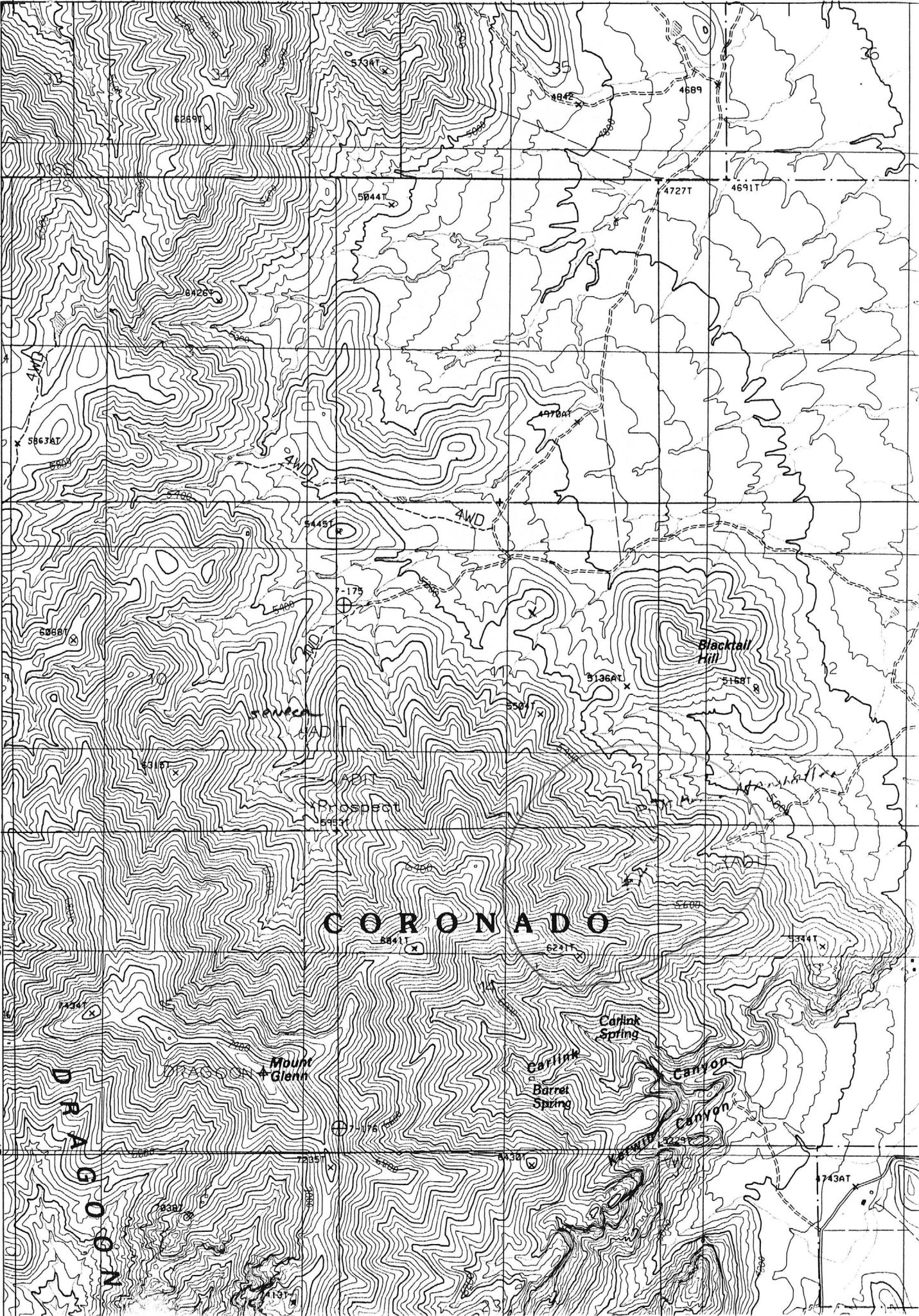
3539

3538

3537

57' 30" 3536

3535



DRAGON

CORONADO

Blacktail Hill

Carlink Spring

Carlink Barrer Spring

Canyon

Canyon

Mount Glenn

Prospect