



CONTACT INFORMATION

Mining Records Curator
Arizona Geological Survey
1520 West Adams St.
Phoenix, AZ 85007
602-771-1601
<http://www.azgs.az.gov>
inquiries@azgs.az.gov

The following file is part of the

Arizona Department of Mines and Mineral Resources Mining Collection

ACCESS STATEMENT

These digitized collections are accessible for purposes of education and research. We have indicated what we know about copyright and rights of privacy, publicity, or trademark. Due to the nature of archival collections, we are not always able to identify this information. We are eager to hear from any rights owners, so that we may obtain accurate information. Upon request, we will remove material from public view while we address a rights issue.

CONSTRAINTS STATEMENT

The Arizona Geological Survey does not claim to control all rights for all materials in its collection. These rights include, but are not limited to: copyright, privacy rights, and cultural protection rights. The User hereby assumes all responsibility for obtaining any rights to use the material in excess of "fair use."

The Survey makes no intellectual property claims to the products created by individual authors in the manuscript collections, except when the author deeded those rights to the Survey or when those authors were employed by the State of Arizona and created intellectual products as a function of their official duties. The Survey does maintain property rights to the physical and digital representations of the works.

QUALITY STATEMENT

The Arizona Geological Survey is not responsible for the accuracy of the records, information, or opinions that may be contained in the files. The Survey collects, catalogs, and archives data on mineral properties regardless of its views of the veracity or accuracy of those data.

PRINTED: 11-27-2006

ARIZONA DEPARTMENT OF MINES AND MINERAL RESOURCES AZMILS DATA

PRIMARY NAME: PICKAWAY GROUP

ALTERNATE NAMES:

PATENTED CLAIMS MS 2138

YAVAPAI COUNTY MILS NUMBER: 1225B

LOCATION: TOWNSHIP 10 N RANGE 2 E SECTION 6 QUARTER NW
LATITUDE: N 34DEG 16MIN 47SEC LONGITUDE: W 112DEG 11MIN 52SEC
TOPO MAP NAME: CLEATOR - 7.5 MIN

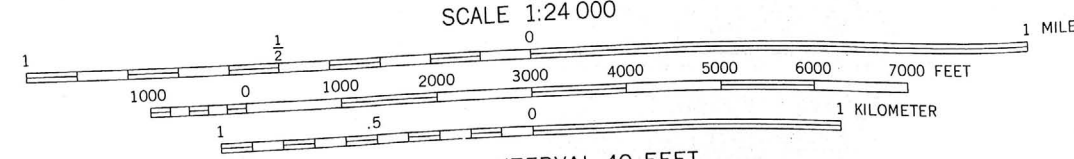
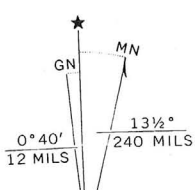
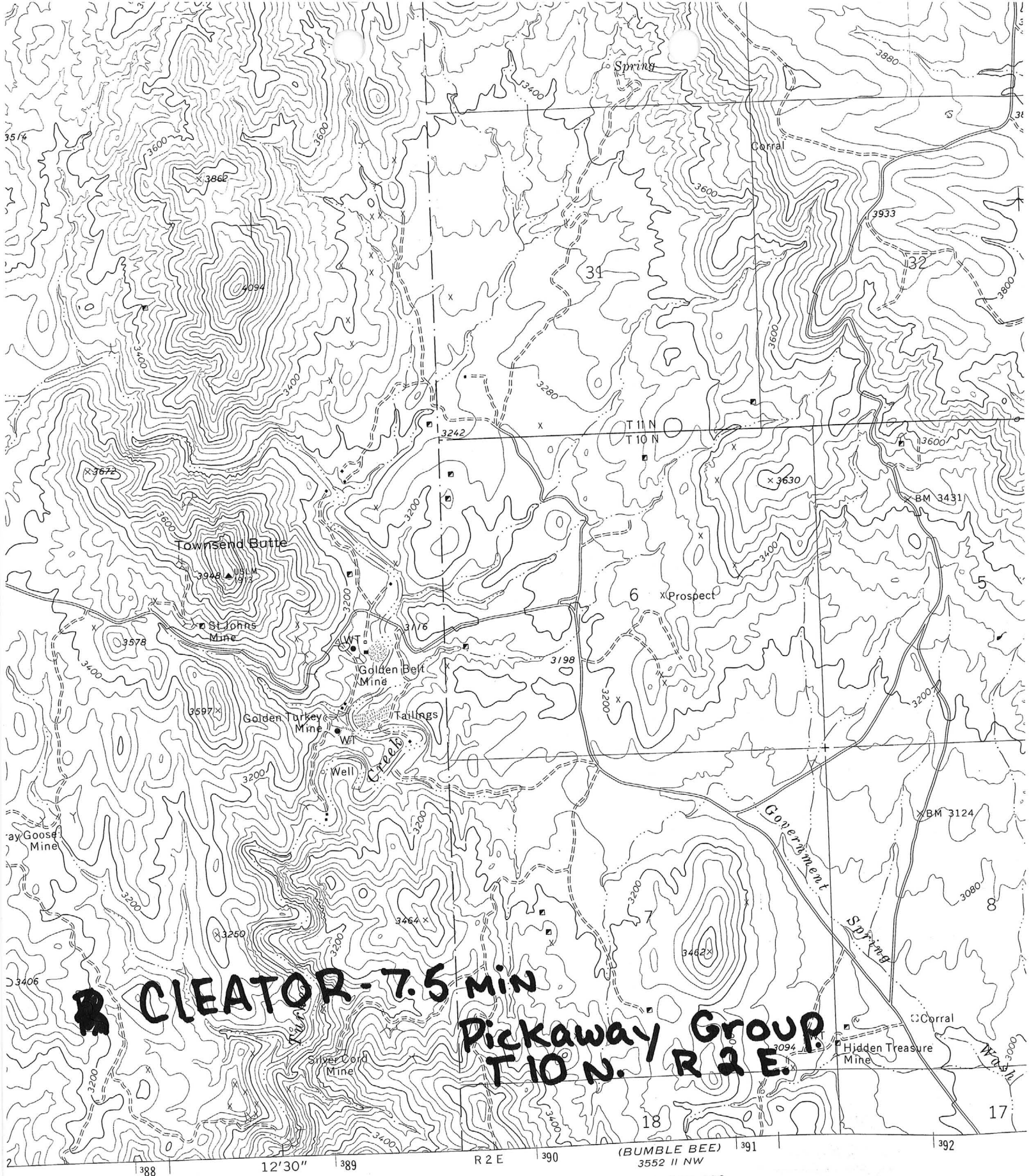
CURRENT STATUS: PAST PRODUCER

COMMODITY:

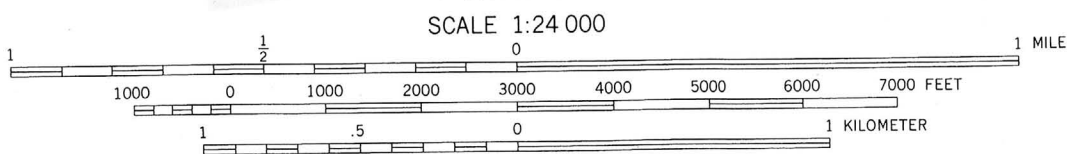
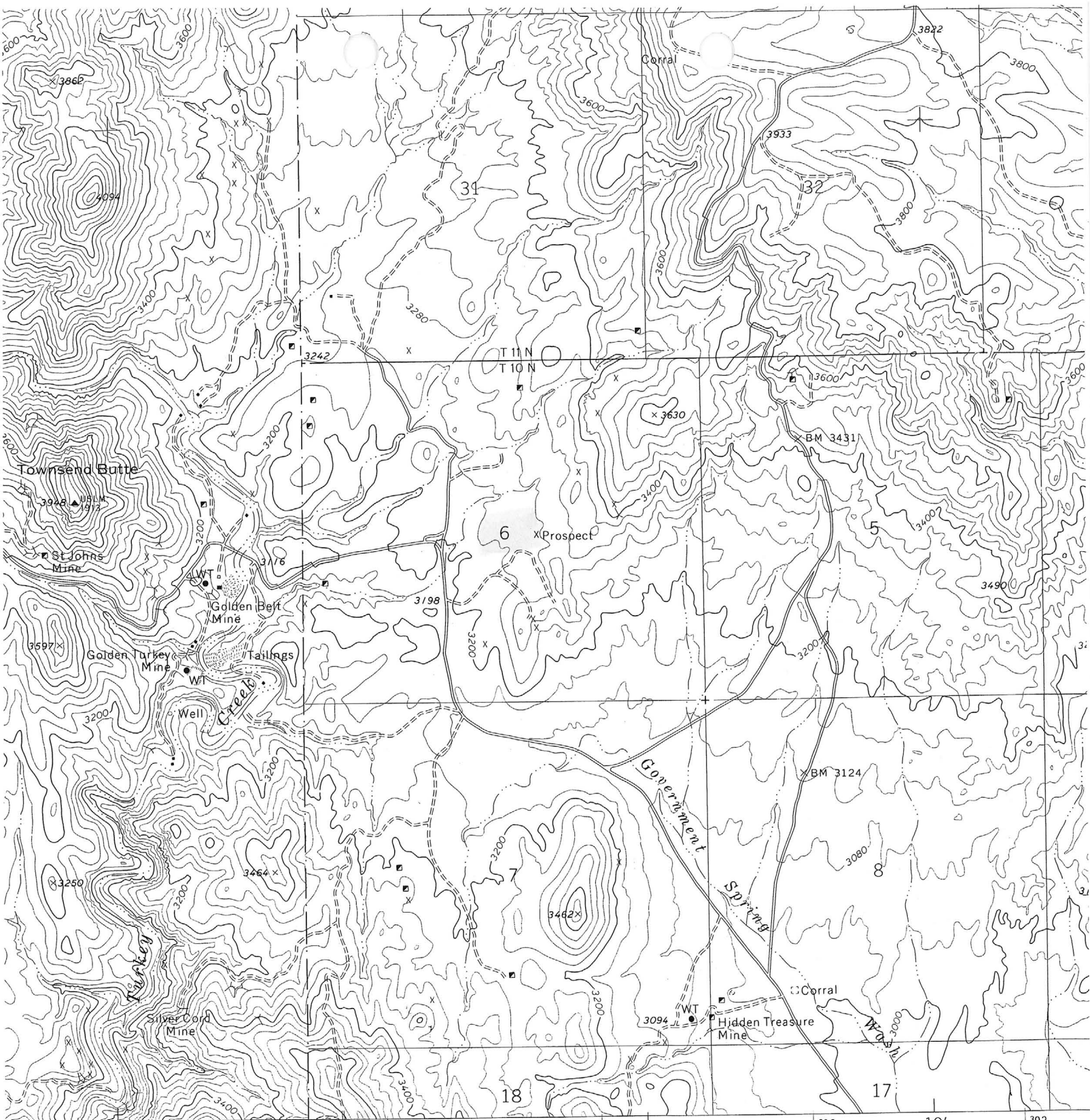
GOLD
LEAD
ZINC

BIBLIOGRAPHY:

USGS CLEATOR QUAD
BLM MINING DISTRICT SHEET 11 AND 44
ADMMR PICKAWAY FILE



CONTOUR INTERVAL 40 FEET
NATIONAL GEODETIC VERTICAL DATUM OF 1929



CONTOUR INTERVAL 40 FEET
NATIONAL GEODETIC VERTICAL DATUM OF 1929

Pickaway Group

CLBATOR - 7.5 MIN

THIS MAP COMPLIES WITH NATIONAL MAP ACCURACY STANDARDS
FOR SALE BY U. S. GEOLOGICAL SURVEY, DENVER, COLORADO 80225, OR RESTON, VIRGINIA 22092
A FOLDER DESCRIBING TOPOGRAPHIC MAPS AND SYMBOLS IS AVAILABLE ON REQUEST

NORTH
HEET

QUADRANG

PICKAWAY GROUP

YAVAPAI COUNTY
BLACK CANYON DISTRICT
11N R2E Sec 31 SW

MILS #1225A, #1225B

Patented Claims M S 2138

K1

Arizona Department of Mines and Mineral Resources

VERBAL INFORMATION SUMMARY

Information from:
Bob Benedict
6938 W. Sierra Vista Drive
Glendale, Arizona 85303

Phone:
934-2089

Mine:
PICKAWAY

ADMMR Mine File
Pickaway Group

County:
Yavapai

Summary of information received, comments, etc.:

Bob Benedict was in and reported he has purchased the north half of the Pickaway patented claim (MS 2138) on July 2, 1990. He believes that most of the workings are on the portion he purchased.

Date:

Aug 2, 1990 Ken Phillips

Signature

ADMMR

PICKAWAY GROUP

YAVAPAI COUNTY
BLACK CANYON DISTRICT
T10N R2E Sec 24
T11N R1E

1 mile E. of Cleator

Patented - Cu close to surface

Copper Ace	Ilda
Pickaway	Virgo
Lookout	#3
Sylvia CP	#2
Crayrock	Midway Fraction
Quail & Palo Verde	Palo Verde

600' shaft - rich ore (Jim Cleator) 50-60' to flat vein.
High grade. Au - Pb - Zn

Happy Goodsen worked 1900's. Pat in 1870-80's
Owner: Wife of John E. Madden (Atty) ✓
822 T & T Bldg, Phoenix

Reported owner of North $\frac{1}{2}$ of Pickaway (purchased mid 1983) and South 10 acres
Ilda (purchased mid 1981) is Bernie Wilkie
3936 W. Orange Drive
Phoenix, Arizona 85019

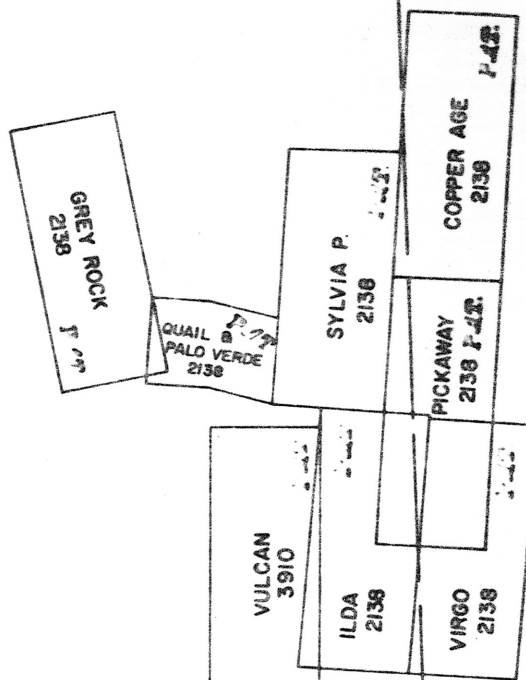
(see map in this file)

BLACK CANON DIST.
TURKEY CREEK DIST.
PECK DIST.

11

SE 1/4, T. 11 N., R. 1 E.
PINE GROVE DIST.
BLACK CANON DIST.
TURKEY CREEK DIST.
PECK DIST.

Sec. 24



USLM
1913

North 1/2 Pickaway (Purchased mid 1983)
South 10 acres ILDA (Purchased mid 1981)

Owned by Bennie Wilkie
3936 W Orange Drive
Phoenix, Arizona 85019