



## **CONTACT INFORMATION**

Mining Records Curator  
Arizona Geological Survey  
1520 West Adams St.  
Phoenix, AZ 85007  
602-771-1601  
<http://www.azgs.az.gov>  
[inquiries@azgs.az.gov](mailto:inquiries@azgs.az.gov)

The following file is part of the

Arizona Department of Mines and Mineral Resources Mining Collection

## **ACCESS STATEMENT**

These digitized collections are accessible for purposes of education and research. We have indicated what we know about copyright and rights of privacy, publicity, or trademark. Due to the nature of archival collections, we are not always able to identify this information. We are eager to hear from any rights owners, so that we may obtain accurate information. Upon request, we will remove material from public view while we address a rights issue.

## **CONSTRAINTS STATEMENT**

The Arizona Geological Survey does not claim to control all rights for all materials in its collection. These rights include, but are not limited to: copyright, privacy rights, and cultural protection rights. The User hereby assumes all responsibility for obtaining any rights to use the material in excess of "fair use."

The Survey makes no intellectual property claims to the products created by individual authors in the manuscript collections, except when the author deeded those rights to the Survey or when those authors were employed by the State of Arizona and created intellectual products as a function of their official duties. The Survey does maintain property rights to the physical and digital representations of the works.

## **QUALITY STATEMENT**

The Arizona Geological Survey is not responsible for the accuracy of the records, information, or opinions that may be contained in the files. The Survey collects, catalogs, and archives data on mineral properties regardless of its views of the veracity or accuracy of those data.

PRINTED: 05/31/2002

ARIZONA DEPARTMENT OF MINES AND MINERAL RESOURCES AZMILS DATA

PRIMARY NAME: PICACHO VIEW

ALTERNATE NAMES:

YAVAPAI COUNTY MILS NUMBER: 213C

LOCATION: TOWNSHIP 7 N RANGE 3 W SECTION 10 QUARTER SW  
LATITUDE: N 33DEG 57MIN 47SEC LONGITUDE: W 112DEG 33MIN 50SEC  
TOPO MAP NAME: RED PICACHO - 7.5 MIN

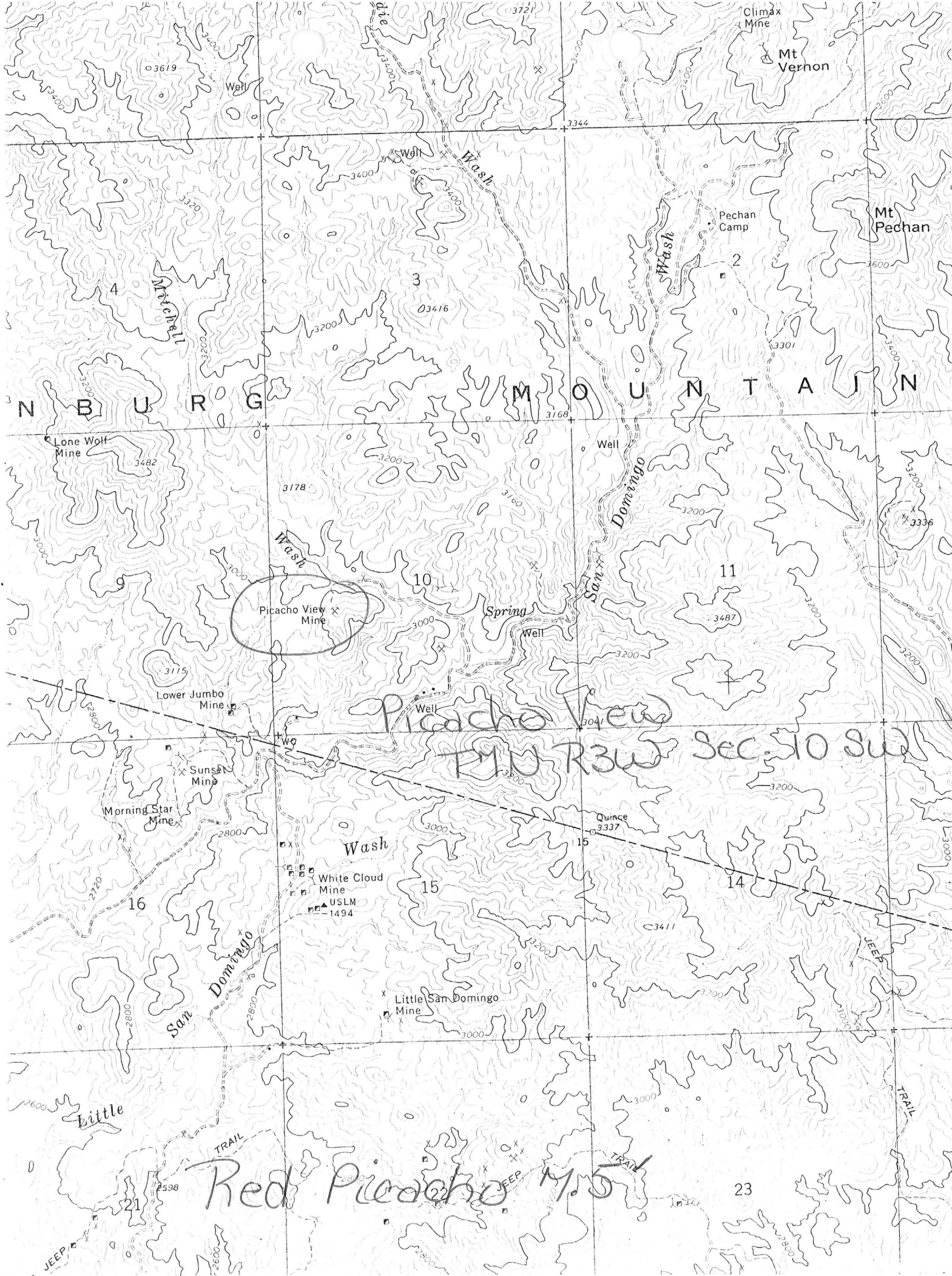
CURRENT STATUS: PAST PRODUCER

COMMODITY:

FELDSPAR  
LEAD  
ZINC  
GOLD  
MICA

BIBLIOGRAPHY:

ADMMR PICACHO VIEW FILE  
JAHNS, R.H. PEGMATITE DEPTS OF THE WHITE  
PICACHO DIST. AZBM BULL 162 1952 P 90



Picacho View Mine

Picacho View  
T1N R3W Sec 10 SW

Red Picacho M. 5

PICACHO VIEW

YAVAPAI COUNTY

KAP WR 7/1/88: Rupert Spivey of New Mexico, while in to discuss the sodium feldspar market, reported that he has the first right of refusal on the Picacho View (file) Yavapai County. He said Sidney Anderson of Wickenburg (formerly of Mesa) still owns the mine.

-----

PICAKITO (F)  
MIDNIGHT OUL (F)

K O  
RMS

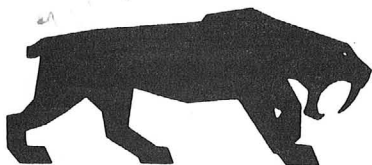
Information for files:

November 20, 1987

KIMBERLY FELDSPAR MILL (F)

From: John H. Jett

Received a telephone call from Wally McGregor, President of Steelhead Resources. They are giving up their feldspar property near Wickenburg and plans for a plant. They have purchased Tenneco's zeolite business and another property near San Bernardino which is closer to their plant in Santa Fe Springs. However, their ultimate goal is to eventually move their plant to the desert near Wickenburg in about 1½ years or so.



**saber  
communications  
international**

**business news**

JULY 22, 1987

FOR IMMEDIATE RELEASE

CONTACT: WALLACE MCGREGOR  
(509) 467-5700

CLIENT: STEELHEAD RESOURCES, LTD.

BOB BATES  
(714) 955-2552

STEELHEAD RESOURCES LEASES FANSTEEL CORPORATION'S ARIZONA  
FELDSPAR MINES

PHOENIX, Arizona--Steelhead Resources, Ltd., Spokane, Washington, and Vancouver, B.C., Canada, today announced the augmentation of their high-grade feldspar reserves, in the White Picacho Mining District, near Wickenburg, Arizona, through the leasing of a group of 12 mining claims comprising 340 acres, from Fansteel Corporation, Chicago, Illinois. The White Picacho Mining District lies about ten miles east of Wickenburg, and forty-five miles northwest of Phoenix. Steelhead Resources is one of the leading producers of potassium and sodium feldspar in the western U.S. The announcement of the leasing was made by Wallace McGregor, president, Steelhead Resources.

"The acquisition of the Sid Anderson properties, announced previously on March 5, 1987, combined with the Fansteel lease provides Steelhead Resources with large reserves of high-quality feldspar in the White Picacho District," McGregor stated.

(more)

**2081 BUSINESS CENTER DR., SUITE 180 • IRVINE, CA 92715 (714) 955-2552**

1 copy in (ARCHIVE VIEW) (F)  
1 COPY IN ARCHIVE VIEW (F)  
K MS

According to McGregor, Rupert B. Spivey, Steelhead Resources' vice president of mining, is working to bring the mining operation into full production as rapidly as possible. Steelhead Resources is also expanding its feldspar mining operations at Daggett, in the Ord Mountains, near Barstow, California.

The feldspar ore from Arizona will be temporarily shipped to Steelhead Resources' milling plant at Santa Fe Springs, near Los Angeles. Planning is underway for the construction of a 300-ton-per-day flotation mill at the Wickenburg site.

Steelhead Resources supplies high-grade sodium and potassium feldspar to manufacturers of ceramic glazes, sanitary fixtures, dishes, pottery and abrasives, in the western U.S. The company has recently expanded their marketing program to include overseas markets.

Steelhead Resources, Ltd., is a Canadian publicly held company that is traded on the Vancouver Stock Exchange. The company specializes in the exploration for, mining, processing and marketing of industrial minerals, and precious metals.

The company's U.S. corporate office is located at N. 9516 Division Street, Suite B, Spokane, Washington 99218, telephone: (509) 467-5700. Their Canadian office is at 330-885 Dunsmuir Street, Vancouver, B.C., Canada V7C 1N5, telephone: (604) 669-3404.

# # # #

*John  
Pls. note  
Ralph  
Release  
Date  
B. Bates*



**STEELHEAD COMMUNICATIONS INTERNATIONAL**  
 22001 Business Center Dr., Suite 180, Irvine, CA 92715, U.S.A.  
 Worldwide Marketing/Sales Communications

Robert G. Bates, President  
 (714) 955-2552 Telex—277780-EXEC

**RECEIVED**

JUL 17 1987

DEPT. OF MINES &  
 MINERAL RESOURCES