



CONTACT INFORMATION

Mining Records Curator
Arizona Geological Survey
1520 West Adams St.
Phoenix, AZ 85007
602-771-1601
<http://www.azgs.az.gov>
inquiries@azgs.az.gov

The following file is part of the

Arizona Department of Mines and Mineral Resources Mining Collection

ACCESS STATEMENT

These digitized collections are accessible for purposes of education and research. We have indicated what we know about copyright and rights of privacy, publicity, or trademark. Due to the nature of archival collections, we are not always able to identify this information. We are eager to hear from any rights owners, so that we may obtain accurate information. Upon request, we will remove material from public view while we address a rights issue.

CONSTRAINTS STATEMENT

The Arizona Geological Survey does not claim to control all rights for all materials in its collection. These rights include, but are not limited to: copyright, privacy rights, and cultural protection rights. The User hereby assumes all responsibility for obtaining any rights to use the material in excess of "fair use."

The Survey makes no intellectual property claims to the products created by individual authors in the manuscript collections, except when the author deeded those rights to the Survey or when those authors were employed by the State of Arizona and created intellectual products as a function of their official duties. The Survey does maintain property rights to the physical and digital representations of the works.

QUALITY STATEMENT

The Arizona Geological Survey is not responsible for the accuracy of the records, information, or opinions that may be contained in the files. The Survey collects, catalogs, and archives data on mineral properties regardless of its views of the veracity or accuracy of those data.

10/01/96

ARIZONA DEPARTMENT OF MINES AND MINERAL RESOURCES FILE DATA

PRIMARY NAME: PHOENIX QUARRY

ALTERNATE NAMES:

PIONEER SAND QUARRY
PIONEER SAND # 7

MARICOPA COUNTY MILS NUMBER: 804

LOCATION: TOWNSHIP 1 N RANGE 2 E SECTION 30 QUARTER NE
LATITUDE: N 33DEG 24MIN 14SEC LONGITUDE: W 112DEG 11MIN 23SEC
TOPO MAP NAME: FOWLER - 7.5 MIN

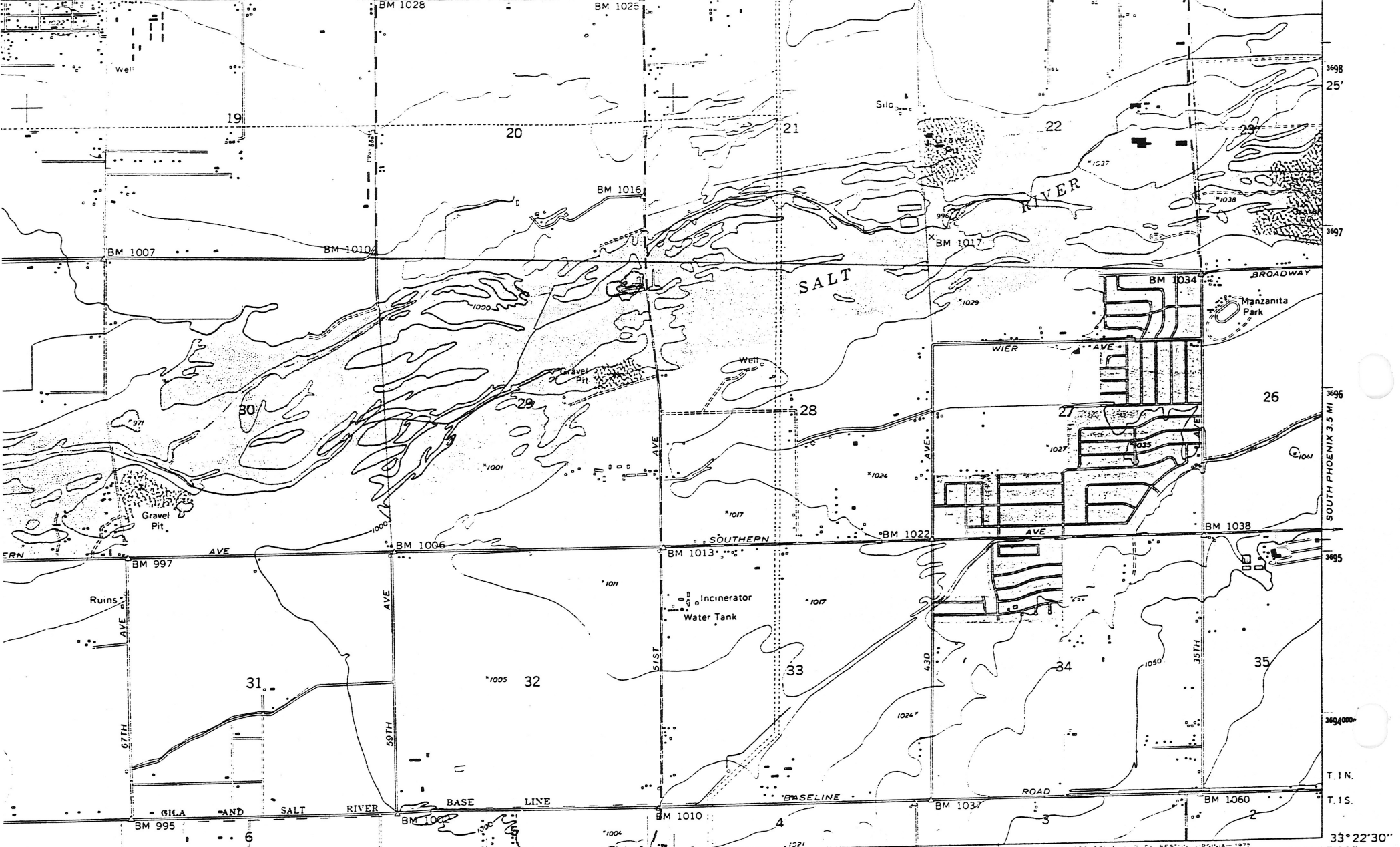
CURRENT STATUS: PRODUCER 1996

COMMODITY:

SAND & GRAVEL

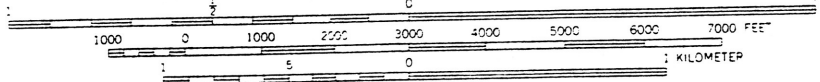
BIBLIOGRAPHY:

ADMMR PHOENIX QUARRRY FILE



12'30" R E R 2 E. 389 (LAVEN) 3550' SW 390 LAVEN G.R. 10' 392 393 3950000 E 112°07'30"

SCALE 1:24000

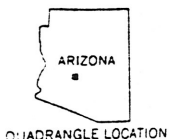


CONTOUR INTERVAL 10 FEET
NATIONAL GEODETIC VERTICAL DATUM OF 1929

THIS MAP COMPLIES WITH NATIONAL MAP ACCURACY STANDARDS

ROAD CLASSIFICATION

Heavy-duty		Light-duty	
Medium-duty		Unimproved dirt	
	U. S. Route		State Route



FOWLER, ARIZ.
NW 4 PHOENIX 15' QUADRANGLE
N3322.5—W11207.5/7.5

(LONE BUT.
3550' E