



CONTACT INFORMATION

Mining Records Curator
Arizona Geological Survey
1520 West Adams St.
Phoenix, AZ 85007
602-771-1601
<http://www.azgs.az.gov>
inquiries@azgs.az.gov

The following file is part of the

Arizona Department of Mines and Mineral Resources Mining Collection

ACCESS STATEMENT

These digitized collections are accessible for purposes of education and research. We have indicated what we know about copyright and rights of privacy, publicity, or trademark. Due to the nature of archival collections, we are not always able to identify this information. We are eager to hear from any rights owners, so that we may obtain accurate information. Upon request, we will remove material from public view while we address a rights issue.

CONSTRAINTS STATEMENT

The Arizona Geological Survey does not claim to control all rights for all materials in its collection. These rights include, but are not limited to: copyright, privacy rights, and cultural protection rights. The User hereby assumes all responsibility for obtaining any rights to use the material in excess of "fair use."

The Survey makes no intellectual property claims to the products created by individual authors in the manuscript collections, except when the author deeded those rights to the Survey or when those authors were employed by the State of Arizona and created intellectual products as a function of their official duties. The Survey does maintain property rights to the physical and digital representations of the works.

QUALITY STATEMENT

The Arizona Geological Survey is not responsible for the accuracy of the records, information, or opinions that may be contained in the files. The Survey collects, catalogs, and archives data on mineral properties regardless of its views of the veracity or accuracy of those data.

07/07/87

ARIZONA DEPARTMENT OF MINES AND MINERAL RESOURCES FILE DATA

PRIMARY NAME: PENNY FIRE AGATE

ALTERNATE NAMES:

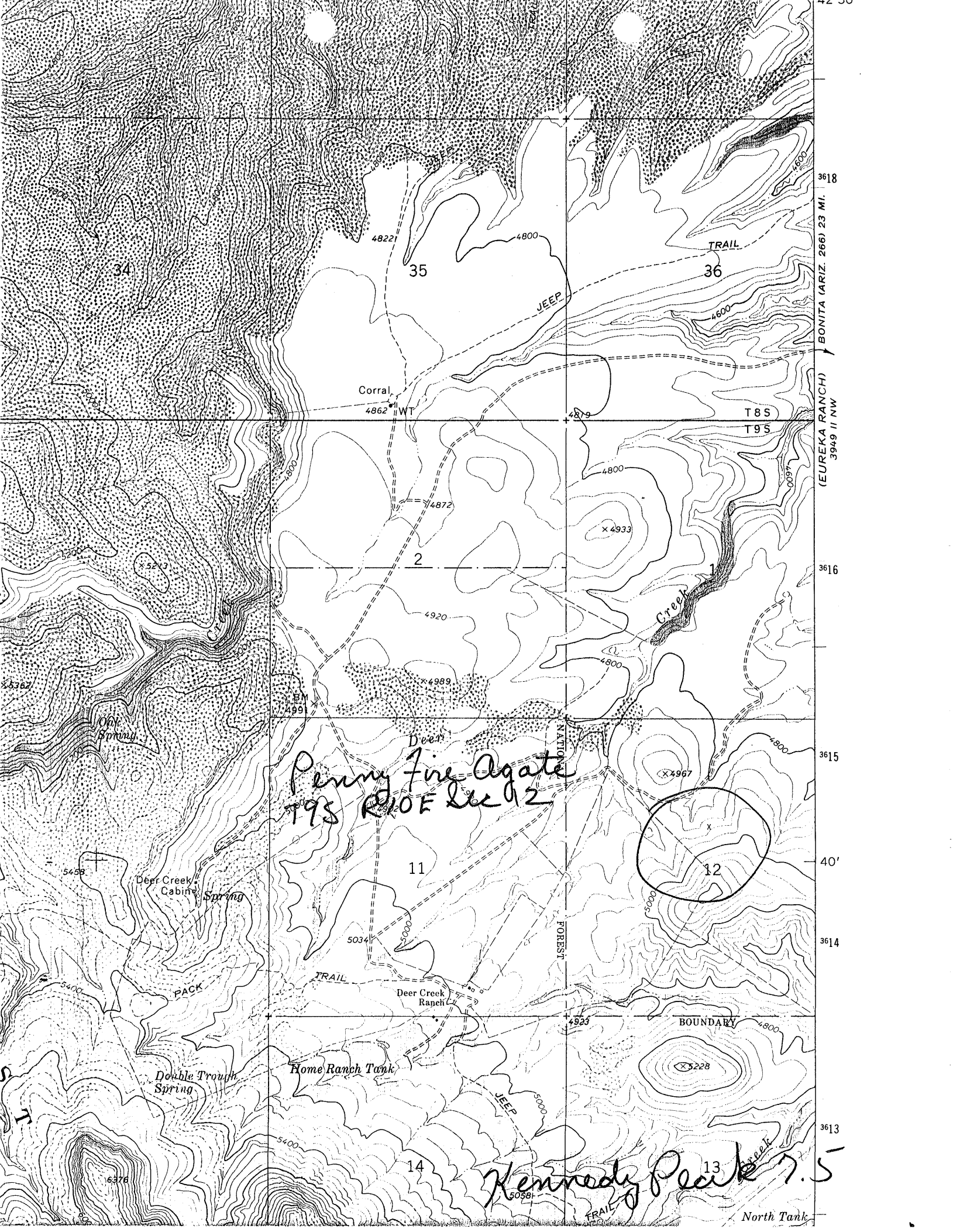
GRAHAM COUNTY MILS NUMBER: 246

LOCATION: TOWNSHIP 9 S RANGE 20 E SECTION 12 QUARTER C
LATITUDE: N 32DEG 00MIN 06SEC LONGITUDE: W 110DEG 52MIN 21SEC
TOPO MAP NAME: KENNEDY PEAK - 7.5 MIN

CURRENT STATUS: EXP PROSPECT

COMMODITY:
GEMSTONE FIRE AGATE

BIBLIOGRAPHY:
ADMMR PENNY FIRE AGATE FILE



PENNY FIRE AGATE

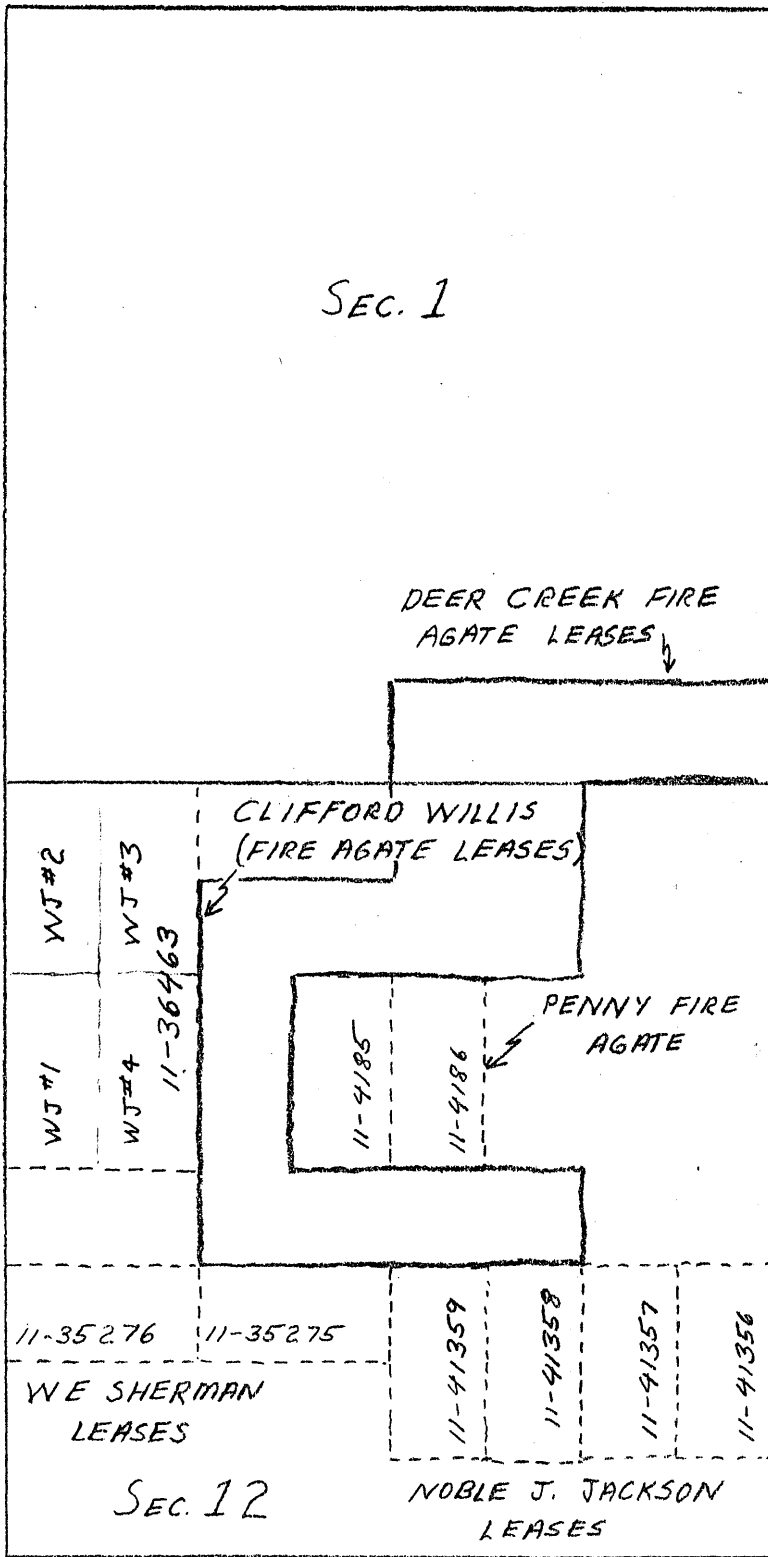
GRAHAM COUNTY

NJN WR 2/4/83: Dave Penny's Fire Agate Property is on State Land. His lease numbers are 4185 and 4186. The legal description is T9S R20E Sec 12 E $\frac{1}{2}$ SE $\frac{1}{4}$ NW $\frac{1}{4}$ and W $\frac{1}{2}$ SE $\frac{1}{4}$ NW $\frac{1}{4}$. This property was just denoted as a prospect in the Graham County MILS, so #246 should be changed to Penny Fire Agate and noted as having production.

NJN WR 4/24/87: Fred Rothermel (card) State Land Department, reports that Dave Penny (card) still maintains leases on the Penny Fire Agate (file) Graham county, but the state has not received any royalty payment from them.

T. 9 S. R. 20 E.

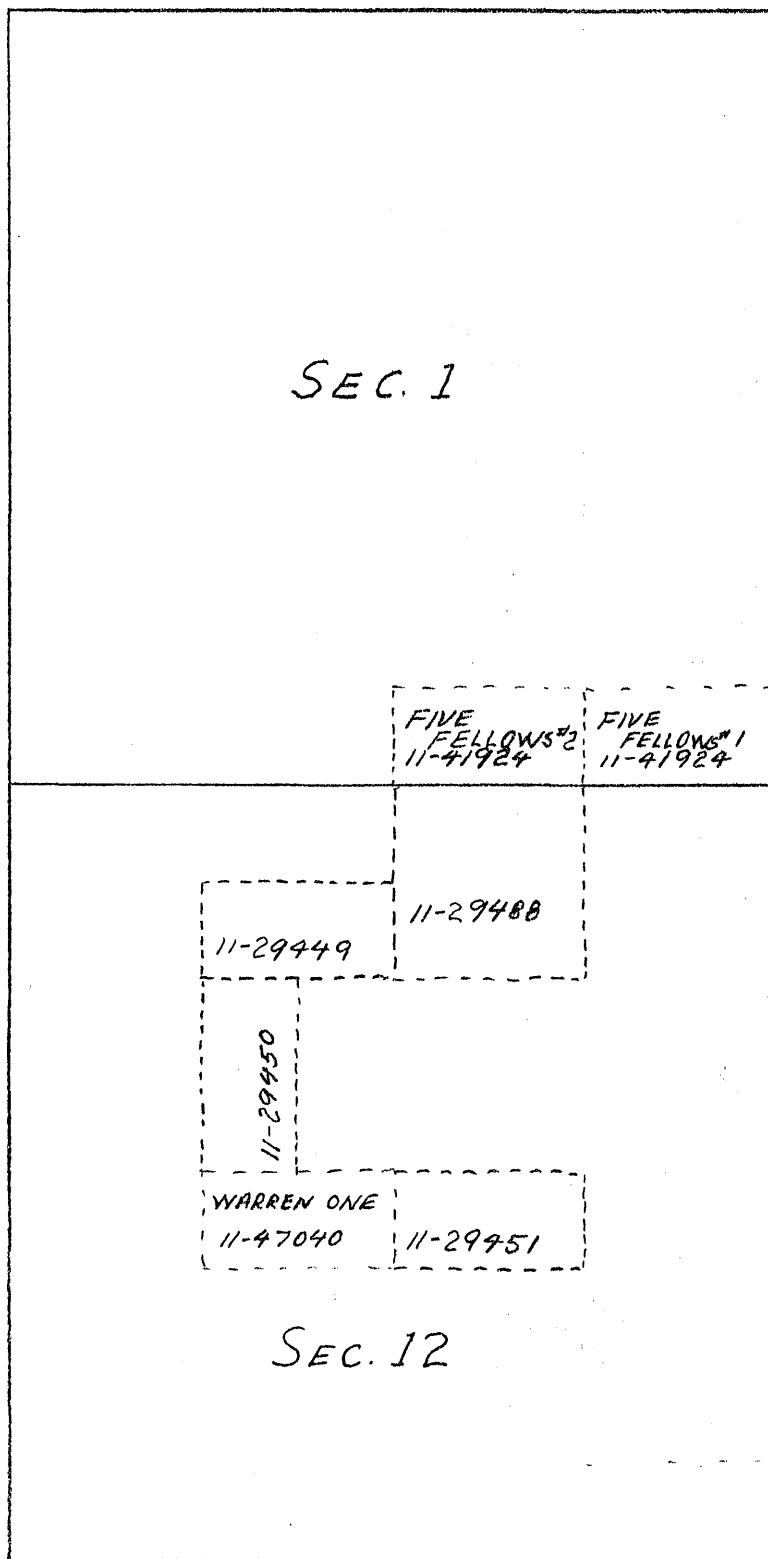
FIRE AGATE LEASES
IN
SECS. 1+12



BY _____ DATE _____
CHKD. BY _____ DATE _____

SUBJECT _____

SHEET NO. _____ OF _____
JOB NO. _____



STATE LEASES HELD BY THE
DOUGLAS T. FRIEL FAMILY AS
HUGHES DEER CREEK FIRE AGATE MINE
IN Sec. 1 & 12, T.9S., R20E.

DEER CREEK FIRE AGATE (FILE)
GRAHAM CO. ARIZ.