



CONTACT INFORMATION

Mining Records Curator
Arizona Geological Survey
1520 West Adams St.
Phoenix, AZ 85007
602-771-1601
<http://www.azgs.az.gov>
inquiries@azgs.az.gov

The following file is part of the

Arizona Department of Mines and Mineral Resources Mining Collection

ACCESS STATEMENT

These digitized collections are accessible for purposes of education and research. We have indicated what we know about copyright and rights of privacy, publicity, or trademark. Due to the nature of archival collections, we are not always able to identify this information. We are eager to hear from any rights owners, so that we may obtain accurate information. Upon request, we will remove material from public view while we address a rights issue.

CONSTRAINTS STATEMENT

The Arizona Geological Survey does not claim to control all rights for all materials in its collection. These rights include, but are not limited to: copyright, privacy rights, and cultural protection rights. The User hereby assumes all responsibility for obtaining any rights to use the material in excess of "fair use."

The Survey makes no intellectual property claims to the products created by individual authors in the manuscript collections, except when the author deeded those rights to the Survey or when those authors were employed by the State of Arizona and created intellectual products as a function of their official duties. The Survey does maintain property rights to the physical and digital representations of the works.

QUALITY STATEMENT

The Arizona Geological Survey is not responsible for the accuracy of the records, information, or opinions that may be contained in the files. The Survey collects, catalogs, and archives data on mineral properties regardless of its views of the veracity or accuracy of those data.

02/24/86

ARIZONA DEPARTMENT OF MINES AND MINERAL RESOURCES FILE DATA

PRIMARY NAME: PEE GEE

ALTERNATE NAMES:

MARICOPA COUNTY MILS NUMBER: 709

LOCATION: TOWNSHIP 7 N RANGE 3 E SECTION 16 QTR. --

LATITUDE: LONGITUDE:

TOPO MAP NAME: DAISY MTN - 7.5 MIN

CURRENT STATUS: UNKNOWN

COMMODITY:

GOLD

BIBLIOGRAPHY:

ADMMR PEE GEE FILE
ALSO IN SEC 21

PEE GEE

6/84

MARICOPA COUNTY
NEW RIVER DISTRICT
T7N R3E Sec 16, 21

MILS Maricopa Index # 709

Daisy Mountain Quad (Included in file)

1435 S. 10th AVE.

Jacobs Assay Office

Registered Assayers



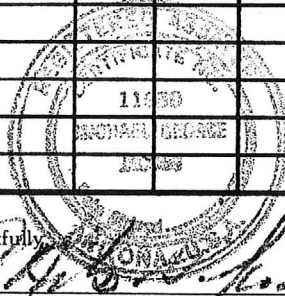
PHONE 622-0813

Certificate No. 61152

TUCSON, ARIZONA 85713 29 April 1981

Sample Submitted By Mr. D.M.P.

SAMPLE MARKED	GOLD Ozs. per ton ore	GOLD Value per ton ore *	SILVER Ozs. per ton ore	LEAD Per cent Wet Assay	COPPER Per cent Wet Assay Per cent Wet Assay Per cent Wet Assay
Keystone #1	Trace	\$	20.05				
PY #1	0.039		20.05				
2	Trace		20.05				
3	0.038		20.05				
4	0.035		20.05				
5	0.039		20.05				
			11				



Charges \$ 45.00

Very respectfully,
[Signature]

PEE GEE

6/84

MARICOPA COUNTY
NEW RIVER DISTRICT
T7N R3E Sec 16, 21

KAP WR 1/2/81: A visit was made to Pee Gee in New River District, Maricopa County.

KAP WR 5/22/81: Sample results were obtained from samples taken from the Pee Gee Group, Agua Fria District, Maricopa County.

KAP WR 1/17/86: Charles R. Merritt, 6030 E. Princess Dr., Mesa, Arizona 85203 has relocated a number of properties, in particular the Pee Gee (file) and the Sleepy Hollow (file), both in the New River area of Maricopa County.

~~DO NOT REPRODUCE~~

MINE AND PROSPECT FIELD VISIT DATA SUMMARY

Sheet 1 of 2

COMMODITIES Gold

MILS ID No. 709 Date March, 1981

ENGINEER Ken Phillips

INFORMATION FROM: Field visit in company of James Graham

PROPERTY SUMMARY

I. MINE NAME Pee Gee OTHER POSSIBLE NAMES _____
INCLUDING ANY CLAIM NAMES NOTED _____

II. LOCATION: T 7N R 3E SEC(S) 16, 21 MINE DISTRICT New River
ELEV. 2500' COUNTY Maricopa TOPO QUAD. Daisy Mountain 7 1/2
DIRECTIONS _____

MAP ATTACHED _____

III. OWNERSHIP: NAME James Graham % Norma Graham PHONE 938-3470
ADDRESS: 4820 W. Sunnyside Drive, Glendale, Az. 85304
COMPANY NAME IF ANY: _____
PERTINENT PEOPLE James Graham, Norma Graham

IV. PROPERTY AND HOLDINGS: Nine unpatented

V. PAST PRODUCTION - NOTED, KNOWN, PROBABLE, UNKNOWN, NONE none

VI. CURRENT STATUS: Prospect

VII. WORKINGS: _____

VIII. GEOLOGY AND MINERALOGY: DEPOSIT TYPE: Zone of quartz vein in precambrian schist
LENGTH: Approx 2000' WIDTH: Approx 1000' VEIN STRIKE _____ DIP _____
HOST ROCK: Precambrian schist
ECONOMIC MINERALS: Gold - Quartz contains coarse cellular boxwork with fluffy limonite

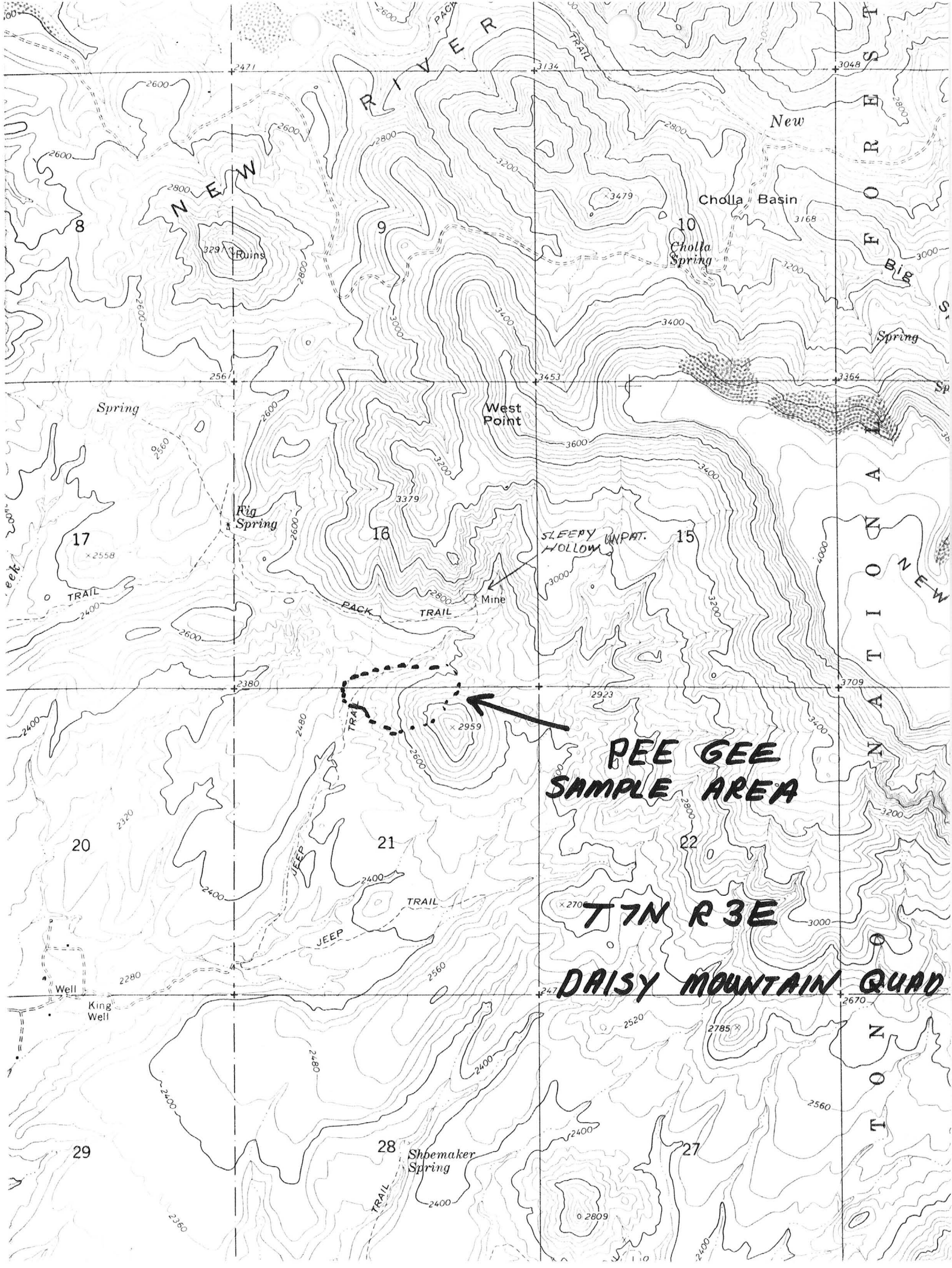
COMMENTS: Occurrence consists of many parallel to subparallel quartz stringers
and veins in schist. Veins vary in thickness from less than an inch to a
max of 2 feet

IX. EQUIPMENT ON SIGHT: none

X. SAMPLING: NOTE TYPE IF ANY, DRILLING? Five samples of the quartz vein material
from various sites were assayed for gold and silver. The results are
contained on the certificate from Jacobs Assay Office dated April 29, 1981.

XI. REFERENCES AND REMARKS _____

Tuckson cc: ✓



**PEE GEE
SAMPLE AREA**

T7N R3E

DAISY MOUNTAIN QUAD