



CONTACT INFORMATION

Mining Records Curator
Arizona Geological Survey
1520 West Adams St.
Phoenix, AZ 85007
602-771-1601
<http://www.azgs.az.gov>
inquiries@azgs.az.gov

The following file is part of the

Arizona Department of Mines and Mineral Resources Mining Collection

ACCESS STATEMENT

These digitized collections are accessible for purposes of education and research. We have indicated what we know about copyright and rights of privacy, publicity, or trademark. Due to the nature of archival collections, we are not always able to identify this information. We are eager to hear from any rights owners, so that we may obtain accurate information. Upon request, we will remove material from public view while we address a rights issue.

CONSTRAINTS STATEMENT

The Arizona Geological Survey does not claim to control all rights for all materials in its collection. These rights include, but are not limited to: copyright, privacy rights, and cultural protection rights. The User hereby assumes all responsibility for obtaining any rights to use the material in excess of "fair use."

The Survey makes no intellectual property claims to the products created by individual authors in the manuscript collections, except when the author deeded those rights to the Survey or when those authors were employed by the State of Arizona and created intellectual products as a function of their official duties. The Survey does maintain property rights to the physical and digital representations of the works.

QUALITY STATEMENT

The Arizona Geological Survey is not responsible for the accuracy of the records, information, or opinions that may be contained in the files. The Survey collects, catalogs, and archives data on mineral properties regardless of its views of the veracity or accuracy of those data.

PRINTED: 03/14/2003

ARIZONA DEPARTMENT OF MINES AND MINERAL RESOURCES AZMILS DATA

PRIMARY NAME: PEARL MINE

ALTERNATE NAMES:

CUBA
MAGORIS

PINAL COUNTY MILS NUMBER: 565A

LOCATION: TOWNSHIP 8 S RANGE 16 E SECTION 17 QUARTER SW
LATITUDE: N 32DEG 44MIN 00SEC LONGITUDE: W 110DEG 44MIN 15SEC
TOPO MAP NAME: MAMMOTH - 7.5 MIN

CURRENT STATUS: PAST PRODUCER

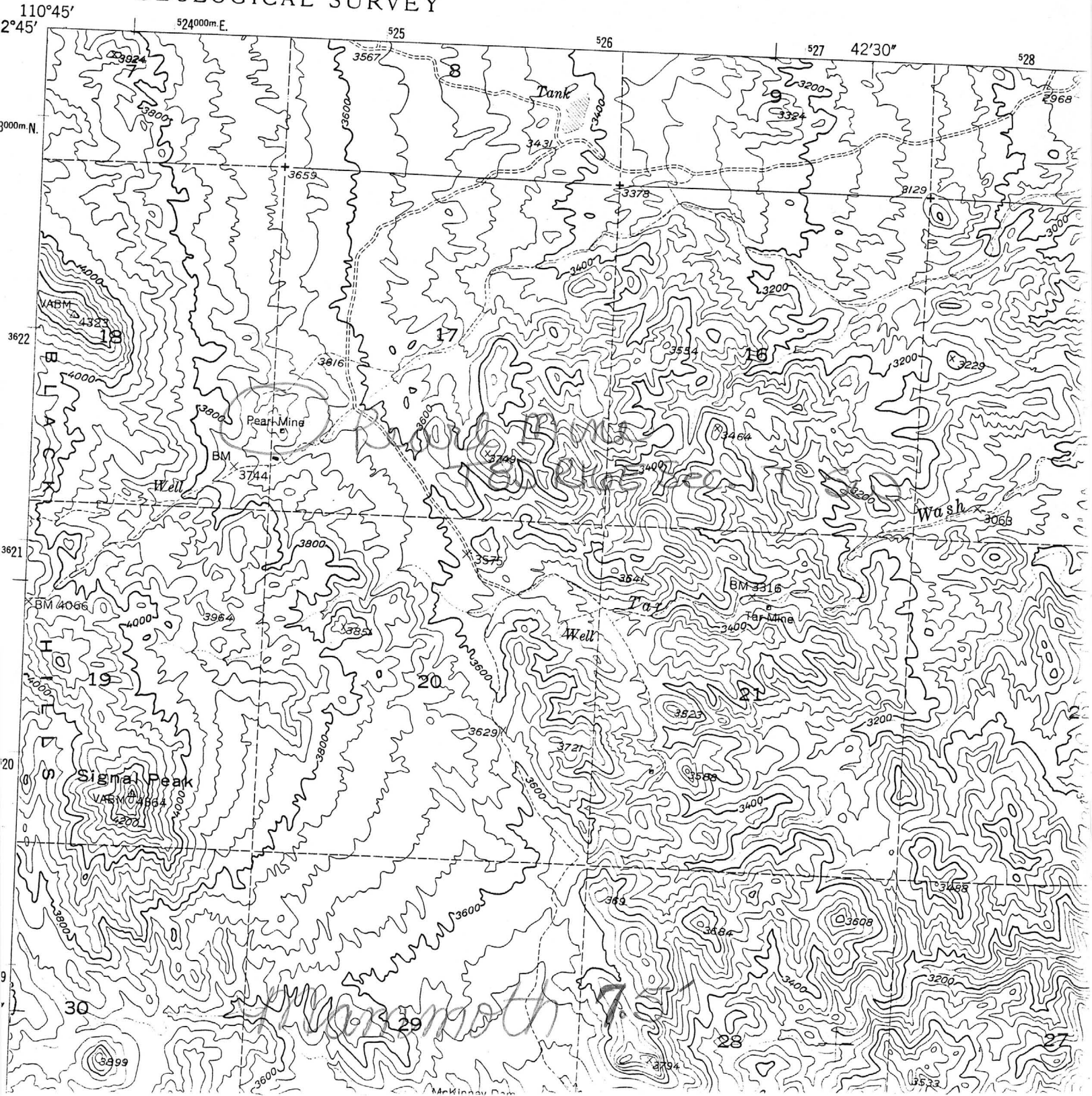
COMMODITY:

COPPER SULFIDE
COPPER OXIDE
LEAD
SILVER

BIBLIOGRAPHY:

ADM MR PEARL MINE FILE
AZ MNG JNL, NOV 1919, P 48 - THIRD COLUMN
CREASY, S "GEOL OF SAN MANUEL AREA, PINAL CO"
USGS PP 471, P 58-59; 1965
ADM MR U FILE, PINAL CU29
CREASY, S "GEOL OF MAMMOTH QUAD, PINAL CO."
USGS BULL 1218, PLATE 1

UNITED STATES
DEPARTMENT OF THE INTERIOR
GEOLOGICAL SURVEY



*GENERAL REFERENCES

- REFERENCE 1 F1 <USBM-ABGHT PRODUCTION DATA FILE
- REFERENCE 2 F2 <ARIZONA DEPARTMENT OF MINERAL RESOURCES - FILE DATA
- REFERENCE 3 F3 <USBM FILE DATA, CLUSTER # 545
- REFERENCE 4 F4 <WEED, W., 1922, THE MINES HANDBOOK, VOL. 15, p. 265

A12 < HUGHES (1960) >

N70 < CROSS FRACTURES ARE ABOUT 10 TO 15 FT APART. MINOR FAULTING VISIBLE, BUT NO LARGE FAULTS FOUND. >

F5 < CREAMY, S., 1965, GEOLOGY OF THE SAN MANUEL AREA PINAL COUNTY, ARIZONA, USGS, P.P. 471, p. 58-59

F6 < CREAMY, S.C., 1967 GENERAL GEOLOGY OF THE MAMMOTH QUAD. PINAL COUNTY, ARIZONA, USGS, BULL. 1218, PLATE 1.

N5 < MANUEL FAULT 1 MILE SW >

U.S. CRIB-SITE FORM

RECORD IDENTIFICATION

RECORD NUMBER B10 < _____ > RECORD TYPE B20 < X, I, M > DEPOSIT NUMBER B40 < _____ >
 REPORT DATE G1 < 82 03 > INFORMATION SOURCE B30 < 1 2 > FILE LINK IDENT. B50 < USBM-004021954 >
 (YR. MO.)
 REPORTER (SUPERVISOR) G2 < LARABA, PETER > < GEST, DON >
 (last, first, middle initial) (last, first, middle initial)
 REPORTER AFFILIATION G5 < ABGHT > SITE NAME A10 < PEARL MINE >
 SYNONYMS A11 < CUBA MINE >

LOCATION

MINING DISTRICT/AREA A30 < MAMMOTH DISTRICT >
 COUNTY A60 < PINAL > STATE A50 < A.Z. > COUNTRY A40 < U.S. >
 PHYSIOGRAPHIC PROV A63 < 1 2 >
 DRAINAGE AREA A62 < 1 S 0 5 0 2 0 3 >
 QUADRANGLE NAME A90 < MAMMOTH > (1 9 7 2 > LAND STATUS A64 < 3 0 > (1 9 7 8 >
 SECOND QUAD NAME A92 < _____ > QUADRANGLE SCALE A100 < 2 4 0 0 0 >
 ELEVATION A107 < 1 3 6 6 0 > FEET > SECOND QUAD SCALE A91 < _____ >

JTM
 NORTHING A120 < 3 6 2 1 6 1 5 >
 EASTING A130 < 5 2 4 6 0 0 >
 ZONE NUMBER A110 < 1 1 2 >

*ACCURACY
 ACCURATE ACD (circle) ESTIMATED EST < _____ >

GEODETTIC
 LATITUDE A70 < _____ N >
 LONGITUDE A80 < _____ W >

CADASTRAL
 TOWNSHIP(S) A77 < 0 0 8 5 > RANGE(S) A78 < 0 1 6 0 E >
 SECTION(S) A79 < 1 7 >
 SECTION FRACTION(S) A76 < NW OF SW OF SW >
 MERIDIAN(S) A81 < GILA AND SALT RIVER >

POSITION FROM NEAREST PROMINENT LOCALITY A82 < 1.2 MILES N-NE OF SIGNAL PEAK (ELV. 4364) >
 LOCATION COMMENTS A83 < _____ >

COMMODITY INFORMATION

*COMMODITIES PRESENT C10 <C.U. <P.P. <P.A. <M.O. <
*ORE MINERALS C30 <CHRYSOCOLLA, <ACHITE, TENORITE, WULFENITE <
*COMMODITY SUBTYPES C41 <
*GEN. ANALYTICAL DATA C43 <
*COM. INFO. COMMENTS C50 <NO SULPHIDES VISIBLE <

*SIGNIFICANCE

PRODUCER: MAJOR PRODUCTS MAJOR <C.U. <P.P. <P.A. <M.O. <
NON-PRODUCER: MAIN COMMODITIES PRESENT C11 <
MINOR PRODUCTS MINOR <P.P. <P.A. <M.O. <
MINOR COMMODITIES PRESENT C12 <
POTENTIAL PRODUCTS POTEN <
OCCURRENCES OCCUR <P.P. <P.A. <M.O. <

*PRODUCTION

PRODUCER: PRODUCTION YES (circle) PRODUCTION SIZE SML MED LGE (circle one)
NON-PRODUCER: PRODUCTION UND NO (circle one)

*STATUS

EXPLORATION OR DEVELOPMENT

PRODUCER: STATUS AND ACTIVITY A20 <H. >
NON-PRODUCER: STATUS AND ACTIVITY A20 < >

*DISCOVERER

L20 <
L10 <
NATURE OF DISCOVERY L30 <B. >
YEAR OF FIRST PRODUCTION L40 <1915 >
YEAR OF LAST PRODUCTION L45 <1941 >
PRESENT/LAST OWNER A12 <DRIPPING SPRINGS MINES CORPORATION (1922), PEARL MINING CO. (1915), WALTER <
PRESENT/LAST OPERATOR A13 <DRIPPING SPRINGS MINES CORP. (1926), PEARL MINING CO. (1915), M.G. TARR (1916) <
EXPL./DEV. COMMENTS L110 <2 UNPATENTED CLAIMS <

DESCRIPTION OF DEPOSIT

*DEPOSIT TYPE(S) C40 <VEIN / SHEAR ZONE <
DEPOSIT FORM/SHAPE M10 <TABULAR <
DEPTH TO TOP M20 < UNITS M21 <
MAXIMUM LENGTH M40 <1/2 > UNITS M41 <MILE <
DEPTH TO BOTTOM M30 < UNITS M31 <
MAXIMUM WIDTH M50 <18 > UNITS M51 <FT <
DEPOSIT SIZE M15 <SMALL > M15 <MEDIUM > M15 <LARGE > (circle one)
MAXIMUM THICKNESS M60 <
UNITS M61 <
STRIKE M70 <N-S >
DIP M80 <80 W >
DIRECTION OF PLUNGE M100 <
PLUNGE M90 <
DEP. DESC. COMMENTS M110 <THERE ARE 3 MAIN VEINS ON THE CLAIM, THEY RANGE IN WIDTH FROM <
2 TO 18 FT, ALL STRIKE N-S AND DIPS RANGE FROM 60 TO 80 DEG. WEST. <

DESCRIPTION OF WORKINGS

*Workings are: SURFACE M120 UNDERGROUND M130 BOTH M140 (circle one)
OVERALL LENGTH M190 <
UNITS M191 <
DEPTH BELOW SURFACE M160 <
UNITS M161 <
OVERALL WIDTH M200 <
UNITS M201 <
LENGTH OF WORKINGS M170 <
UNITS M171 <
OVERALL AREA M210 <
UNITS M211 <
DESC. OF WORK. COM. M220 <BESIDES LOCATION SHAFTS, THERE ARE 15 SHALLOW OPEN CUTS REPORTED <
TO BE FROM 10 TO 15 FT. LONG, 5 TO 6 FT. WIDE, AND FROM 10 TO 12 FT DEEP. <

GEOLOGY

*AGE OF HOST ROCK(S) K1 <P.R.E.C. <
*HOST ROCK TYPE(S) K1A <GRANODIORITE <
*AGE OF IGNEOUS ROCK(S) K2 <T.E.R.T. <
*IGNEOUS ROCK TYPE(S) K2A <QUARTZ MONZONITE <
*AGE OF MINERALIZATION K3 <T.E.R.T. <
MIDDLE TERTIARY <
*PERT. MINERALS (NOT ORE) K4 <QUARTZ <
*ORE CONTROL/LOCUS K5 <SHEAR ZONE / FAULTING <
FAULT <
*MAJ. REG. TRENDS/STRUCT. N5 <SAN MANUEL AND MAMMOTH FAULTS RUN N45 W, MAMMOTH 1/2 MILES NE, SAN <
*TECTONIC SETTING N15 <
*SIGNIFICANT LOCAL STRUCT. N70 <VEINS RUN NTOS, WITH CROSS FRACTURES RUNNING NW-SE ACROSS THE VEINS. <
*SIGNIFICANT ALTERATION N75 <OXIDIZED AT THE SURFACE <
*PROCESS OF CONC./ENRICH. N80 <LEACHING <
*FORMATION AGE N30 <
*FORMATION NAME N30A <
*SECOND FM AGE N35 <
*SECOND FM NAME N35A <
*IGNEOUS UNIT AGE N50 <P.R.E.C. <
*IGNEOUS UNIT NAME N50A <UNNAMED GRANODIORITE <
*SECOND IG. UNIT AGE N55 <T.E.R.T. <
*SECOND IG. UNIT NAME N55A <QUARTZ MONZONITE <
*GEOLOGY COMMENTS N85 <

GENERAL COMMENTS

GENERAL COMMENTS GEN <