



## **CONTACT INFORMATION**

Mining Records Curator  
Arizona Geological Survey  
1520 West Adams St.  
Phoenix, AZ 85007  
602-771-1601  
<http://www.azgs.az.gov>  
[inquiries@azgs.az.gov](mailto:inquiries@azgs.az.gov)

The following file is part of the

Arizona Department of Mines and Mineral Resources Mining Collection

## **ACCESS STATEMENT**

These digitized collections are accessible for purposes of education and research. We have indicated what we know about copyright and rights of privacy, publicity, or trademark. Due to the nature of archival collections, we are not always able to identify this information. We are eager to hear from any rights owners, so that we may obtain accurate information. Upon request, we will remove material from public view while we address a rights issue.

## **CONSTRAINTS STATEMENT**

The Arizona Geological Survey does not claim to control all rights for all materials in its collection. These rights include, but are not limited to: copyright, privacy rights, and cultural protection rights. The User hereby assumes all responsibility for obtaining any rights to use the material in excess of "fair use."

The Survey makes no intellectual property claims to the products created by individual authors in the manuscript collections, except when the author deeded those rights to the Survey or when those authors were employed by the State of Arizona and created intellectual products as a function of their official duties. The Survey does maintain property rights to the physical and digital representations of the works.

## **QUALITY STATEMENT**

The Arizona Geological Survey is not responsible for the accuracy of the records, information, or opinions that may be contained in the files. The Survey collects, catalogs, and archives data on mineral properties regardless of its views of the veracity or accuracy of those data.

04/02/98

ARIZONA DEPARTMENT OF MINES AND MINERAL RESOURCES FILE DATA

PRIMARY NAME: PAU GROUP

ALTERNATE NAMES:

MAMMOTH WASH PROJECT

PIMA COUNTY MILS NUMBER: 708

LOCATION: TOWNSHIP 12 S RANGE 8 E SECTION 6 QUARTER C  
LATITUDE: N 32DEG 24MIN 41SEC LONGITUDE: W 111DEG 33MIN 49SEC  
TOPO MAP NAME: SILVER BELL WEST - 7.5 MIN

CURRENT STATUS: EXP PROSPECT

COMMODITY:

COPPER  
ZINC

BIBLIOGRAPHY:

ADMMR PAU GROUP FILE

*PAU Group (f)  
Pima Co.*

# THE WEST SILVER BELL PROJECT, PIMA COUNTY, ARIZONA

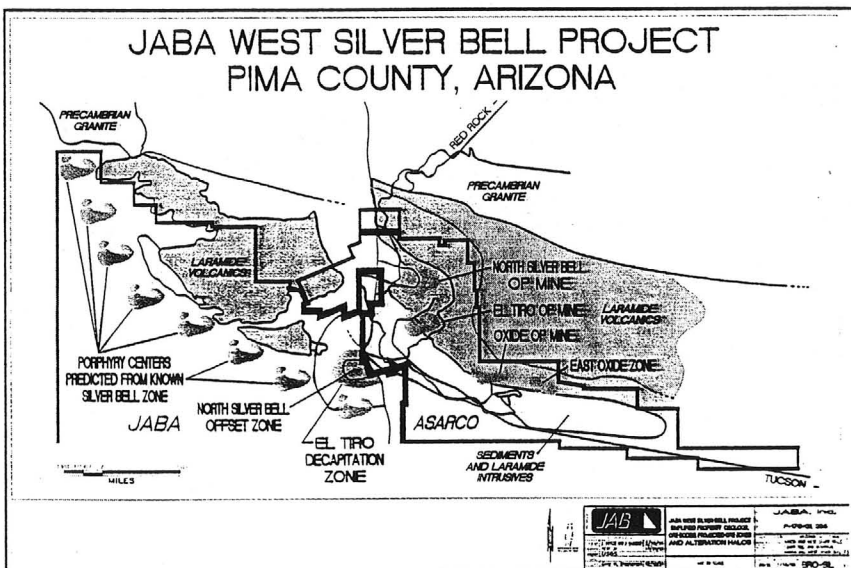
Historically, the Silver Bell district has been extremely productive. First examined by Spaniards in the 16th century, the area's rich copper and silver veins were then opened up by prospector-miners in the 19th century. It was among the earliest districts recognised as a "porphyry copper system" and was mined both underground and from open pits from 1904 until 1983 for copper, molybdenum and precious metal by-products. The current copper porphyries at the Silver Bell mine total approximately 250 million tons of mined and mineable ore averaging around 0.7% copper. The area is known for enriched, high-grade zones, one which is thought to have allowed Asarco to recover its capital investment in the Silver Bell mine in only seven months.

JABA's expertise in this area is extensive. JABA Inc.'s CEO, Jim Briscoe, served as Resident Geologist at the Silver Bell mine during 1965-1968. He was also responsible for outside exploration in the district and consequently formulated structural-lithographic models which he has continued to develop.

Dr. Guilbert started using Silver Bell as a University of Arizona teaching field laboratory in the early 1970s. His emphasis was and remains the undisturbed-surface field expression of porphyry characteristics at the North Silver Bell in a half symmetry outcrop pattern. The "missing western half" of the Silver Bell porphyry is now the subject of a portion of JABA's current exploration efforts.

Recent structural analysis by JABA indicates a left lateral, southwest displacement of the western half of the copper porphyry to an area west of the Atlas Mine, under shallow alluvial cover. Extension of that structural-tectonic model has generated skarn (Atlas-type) and porphyry copper (Silver Bell-type) targets in the West Silver Bell Mountains. JABA's land position includes 3.5 square miles of state exploration permits and 650 lode claims, totalling 23 square miles.

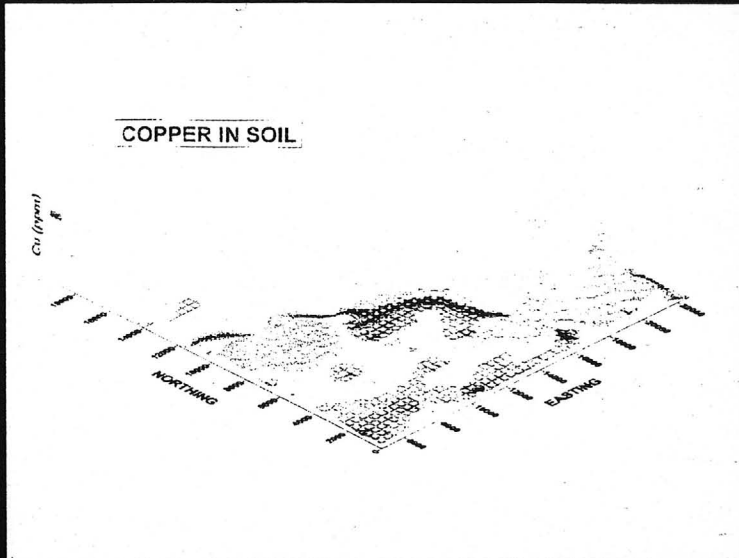
This extensively developed model indicates the potential for several porphyry centers under the area's broad alluvial cover. The area's alteration distribution and apparent Silver Bell lithologies (by structural offset) indicate an ideal setting for major copper/molybdenum/silver/zinc ore deposits within JABA's property. Recent assays have confirmed the probability of outlining a number of copper porphyry zoning patterns, and revealed unexpected gold anomalies on JABA property.



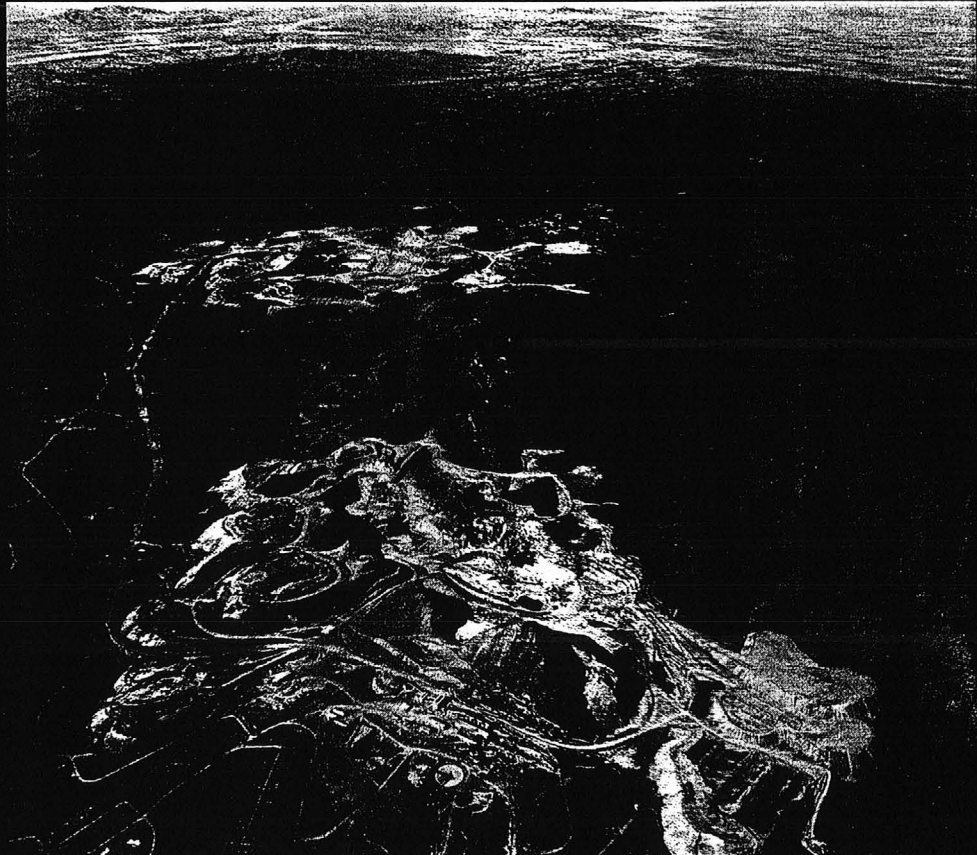
Asarco's Silver Bell Mine and Jaba property. Potential porphyry centers are in green.

*From JABA Annual Report 1996*

THE WEST SILVER BELL PROJECT, PIMA COUNTY, ARIZONA



Map showing elevated copper values in one of seven structurally indicated copper porphyry target areas.



**JABA Inc.**  
**Mining Exploration**



*PAU Group (A)*  
*Pima Co.*  
400 - 850 W. Hastings Street  
Vancouver, BC, Canada V6C 1E1  
(604) 602-9002 Fax (604) 602-9007  
1 (800) 863-1551 www.JABA.com

**NEWS RELEASE**

**June 25, 1998**

**DEVELOPMENTS AT JABA'S MAMMOTH WASH PROJECT,  
SILVER BELL MINING DISTRICT, PIMA COUNTY, ARIZONA**

**JABA Inc.** (JBA-ASE) announces that the joint venture with Cyprus Metals Exploration Corporation ("Cyprus") on its Mammoth Wash project (see News Releases of February 5, April 1, and June 12, 1998), has been terminated effective June 19, 1998. Cyprus drilled 6,142 feet of RC (Reverse Circulation) drilling in 8 holes ranging in depth from 440 feet to 1080 feet, satisfying their commitment which required 6,000 feet of RC drilling by June 9, 1998.

This drilling generated significant information useful to the further evaluation of the Mammoth Wash property, at no cost to JABA, thus satisfying part of JABA's objectives. Only 3 holes clearly penetrated the post mineral gravel cover, entering propylitic (outer porphyry copper type) alteration, and were clearly off target. JABA has learned from this drilling that the gravel cover in the area drilled by Cyprus is greater than suggested by previous information. JABA believes that additional useful and positive targeting information can be derived from the drill data, and is proceeding with more detailed geologic and geochemical interpretation. It must also be noted that the Cyprus drilling campaign tested only the north one-half of the south block of the project area. No test was made of the north, west or east blocks, nor the southern one-half of the south block of the Mammoth Wash project area (see map in News Release dated February 5, 1998).

Another major multinational mining corporation that has been active in the area has agreed to enter discussions regarding a possible follow-on joint venture to test a geophysical anomaly that is known on the south half of the south block of the Mammoth Wash parcel and not tested by the Cyprus drilling. A joint venture to test that anomaly may result, whereby more drilling would be undertaken. Further announcements will be made as developments occur.

On behalf of the Board,

James A. Briscoe  
Chief Executive Officer

John M. Guilbert  
Chairman of the Board

The Alberta Stock Exchange has neither approved nor disapproved the information contained herein

PAU GROUP

PIMA COUNTY

Mr. G. W. Irvin stated that the Pau Group located in the Silverbell district was returned to the owners by Superior Oil Co., after the geophysical surveys were completed. ALJ WR 12-12-64

---

DEPARTMENT OF MINERAL RESOURCES

STATE OF ARIZONA  
FIELD ENGINEERS REPORT

*Private*

Mine      Pau Group      Date      Aug. 28, 1964 -- Sept. 28, 1964

District      Silver Bell District, Pima Co.      Engineer      Axel L. Johnson

Subject:      Field Engineers Report.      Information -- Victor F. Hollister, Dick Metler, Prof. Lacy.

Location      Sec. 6 - T 12 S - R 8 E.      From 1 to 1 1/2 miles SW of Atlas Mine.

Owners      Paul Saches, et. al.

Lessees      Superior Oil Co., Minerals Division, 6520 E. 22nd St., Tucson  
Ralph H. Wilpolt, Manager  
Lease and option

Number of Claims      32 unpatented claims --- the entire section.

Principal Minerals      Zinc and Copper.

Present Activity      None at present.

Review of Recent Operations      Metler Bros. Drilling Co. completed a 733 ft. deep diamond drill hole on Aug. 17, according to Victor F. Hollister. Duval Corporation did the engineering work on the project at that time. This was before Superior Oil Co. was given a lease and option; and was done under an agreement with the owners and Metler Bros. Drilling Co.

Proposed Plans      According to Dr. W. C. Lacy, the lessees plan to do geophysical work, and after this work is finished, drill additional diamond drill holes in locations indicated by the geophysical work.



**DEPARTMENT OF MINERAL RESOURCES**

**STATE OF ARIZONA  
FIELD ENGINEERS REPORT**

*Private*

Mine      Pau Group      Date      Aug. 28, 1964 -- Sept. 28, 1964

District      Silver Bell District, Pima Co.      Engineer      Axel L. Johnson

Subject:      Field Engineers Report.      Information -- Victor F. Hollister, Dick Metler, Prof. Lacy.

Location      Sec. 6 - T 12 S - R 8 E.      From 1 to 1 1/2 miles SW of Atlas Mine.

Owners      Paul Saches, et. al.

Lessees      Superior Oil Co., Minerals Division, 6520 E. 22nd St., Tucson  
Ralph H. Wilpolt, Manager  
Lease and option

Number of Claims      32 unpatented claims --- the entire section.

Principal Minerals      Zinc and Copper.

Present Activity      None at present.

Review of Recent Operations      Metler Bros. Drilling Co. completed a 733 ft. deep diamond drill hole on Aug. 17, according to Victor F. Hollister. Duval Corporation did the engineering work on the project at that time. This was before Superior Oil Co. was given a lease and option; and was done under an agreement with the owners and Metler Bros. Drilling Co.

Proposed Plans      According to Dr. W. C. Lacy, the lessees plan to do geophysical work, and after this work is finished, drill additional diamond drill holes in locations indicated by the geophysical work.



DEPARTMENT OF MINERAL RESOURCES

STATE OF ARIZONA  
FIELD ENGINEERS REPORT

Mine Pau Group Date Aug. 28, 1964 -- Sept. 28, 1964  
District Silver Bell District, Pima Co. Engineer Axel L. Johnson  
Subject: Field Engineers Report. Information -- Victor F. Hollister, Dick Metler, Prof. Lacy.

Location Sec. 6 - T 12 S - R 8 E. From 1 to 1 1/2 miles SW of Atlas Mine.

Owners Paul Saches, et. al.

Lessees Superior Oil Co., Minerals Division, 6520 E. 22nd St., Tucson  
Ralph H. Wilpolt, Manager  
Lease and option

Number of Claims 32 unpatented claims --- the entire section.

Principal Minerals Zinc and Copper.

Present Activity None at present.

Review of Recent Operations Metler Bros. Drilling Co. completed a 733 ft. deep diamond drill hole on Aug. 17, according to Victor F. Hollister. Duval Corporation did the engineering work on the project at that time. This was before Superior Oil Co. was given a lease and option; and was done under an agreement with the owners and Metler Bros. Drilling Co.

Proposed Plans According to Dr. W. C. Lacy, the lessees plan to do geophysical work, and after this work is finished, drill additional diamond drill holes in locations indicated by the geophysical work.