



CONTACT INFORMATION

Mining Records Curator
Arizona Geological Survey
1520 West Adams St.
Phoenix, AZ 85007
602-771-1601
<http://www.azgs.az.gov>
inquiries@azgs.az.gov

The following file is part of the

Arizona Department of Mines and Mineral Resources Mining Collection

ACCESS STATEMENT

These digitized collections are accessible for purposes of education and research. We have indicated what we know about copyright and rights of privacy, publicity, or trademark. Due to the nature of archival collections, we are not always able to identify this information. We are eager to hear from any rights owners, so that we may obtain accurate information. Upon request, we will remove material from public view while we address a rights issue.

CONSTRAINTS STATEMENT

The Arizona Geological Survey does not claim to control all rights for all materials in its collection. These rights include, but are not limited to: copyright, privacy rights, and cultural protection rights. The User hereby assumes all responsibility for obtaining any rights to use the material in excess of "fair use."

The Survey makes no intellectual property claims to the products created by individual authors in the manuscript collections, except when the author deeded those rights to the Survey or when those authors were employed by the State of Arizona and created intellectual products as a function of their official duties. The Survey does maintain property rights to the physical and digital representations of the works.

QUALITY STATEMENT

The Arizona Geological Survey is not responsible for the accuracy of the records, information, or opinions that may be contained in the files. The Survey collects, catalogs, and archives data on mineral properties regardless of its views of the veracity or accuracy of those data.

ARIZONA DEPARTMENT OF MINES AND MINERAL RESOURCES AZMILS DATA

PRIMARY NAME: PAT HILLS NORTH #1

ALTERNATE NAMES:

COCHISE COUNTY MILS NUMBER: 796

LOCATION: TOWNSHIP 16 S RANGE 27 E SECTION 34 QUARTER E2
LATITUDE: N 32DEG 00MIN 00SEC LONGITUDE: W 109DEG 34MIN 30SEC
TOPO MAP NAME: PAT HILLS NORTH - 7.5 MIN

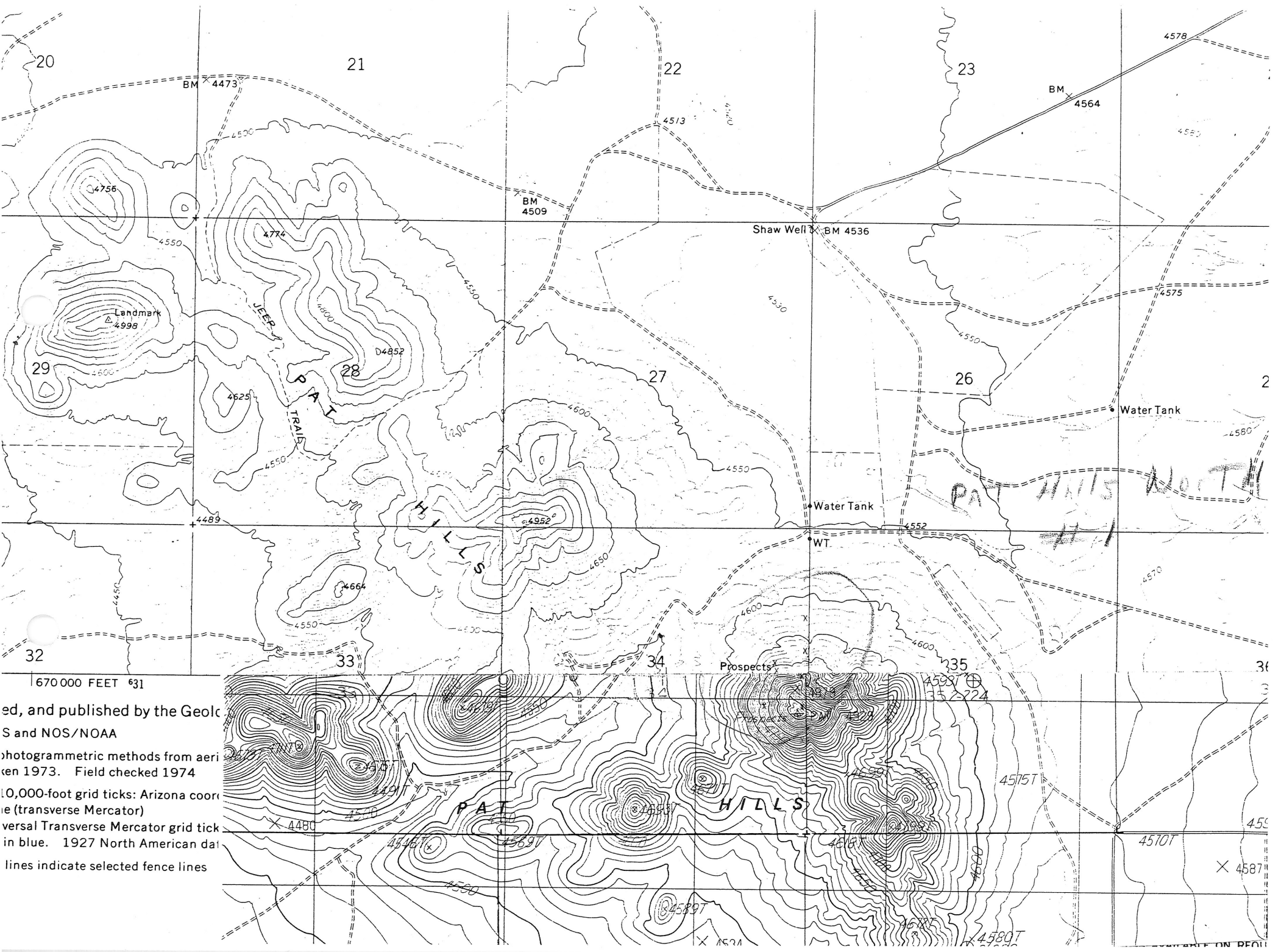
CURRENT STATUS: RAW PROSPECT

COMMODITY:

GOLD
SILVER

BIBLIOGRAPHY:

ADMMR PAT HILLS NORTH #1 FILE
USGS PAT HILLS NORTH QUAD
ETTINGER, U OF A MS THESIS, 1962



ed, and published by the Geol
 S and NOS/NOAA
 photogrammetric methods from aeri
 en 1973. Field checked 1974
 10,000-foot grid ticks: Arizona coord
 e (transverse Mercator)
 versal Transverse Mercator grid tick
 in blue. 1927 North American dat
 lines indicate selected fence lines

SCALE ON REFO