



CONTACT INFORMATION

Mining Records Curator
Arizona Geological Survey
1520 West Adams St.
Phoenix, AZ 85007
602-771-1601
<http://www.azgs.az.gov>
inquiries@azgs.az.gov

The following file is part of the

Arizona Department of Mines and Mineral Resources Mining Collection

ACCESS STATEMENT

These digitized collections are accessible for purposes of education and research. We have indicated what we know about copyright and rights of privacy, publicity, or trademark. Due to the nature of archival collections, we are not always able to identify this information. We are eager to hear from any rights owners, so that we may obtain accurate information. Upon request, we will remove material from public view while we address a rights issue.

CONSTRAINTS STATEMENT

The Arizona Geological Survey does not claim to control all rights for all materials in its collection. These rights include, but are not limited to: copyright, privacy rights, and cultural protection rights. The User hereby assumes all responsibility for obtaining any rights to use the material in excess of "fair use."

The Survey makes no intellectual property claims to the products created by individual authors in the manuscript collections, except when the author deeded those rights to the Survey or when those authors were employed by the State of Arizona and created intellectual products as a function of their official duties. The Survey does maintain property rights to the physical and digital representations of the works.

QUALITY STATEMENT

The Arizona Geological Survey is not responsible for the accuracy of the records, information, or opinions that may be contained in the files. The Survey collects, catalogs, and archives data on mineral properties regardless of its views of the veracity or accuracy of those data.

PRINTED: 07-24-2012

ARIZONA DEPARTMENT OF MINES AND MINERAL RESOURCES AZMILS DATA

PRIMARY NAME: PARK HILL PROJECT

ALTERNATE NAMES:
SEDIMENTARY HILLS STOCK

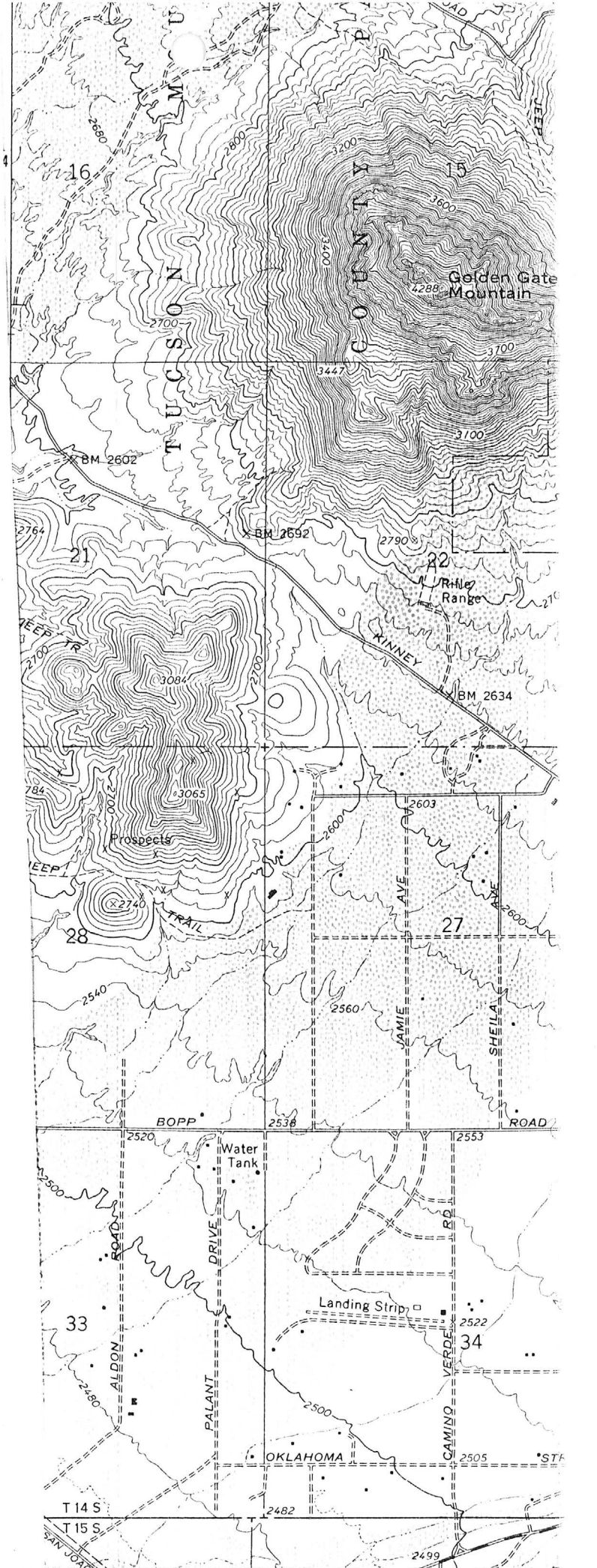
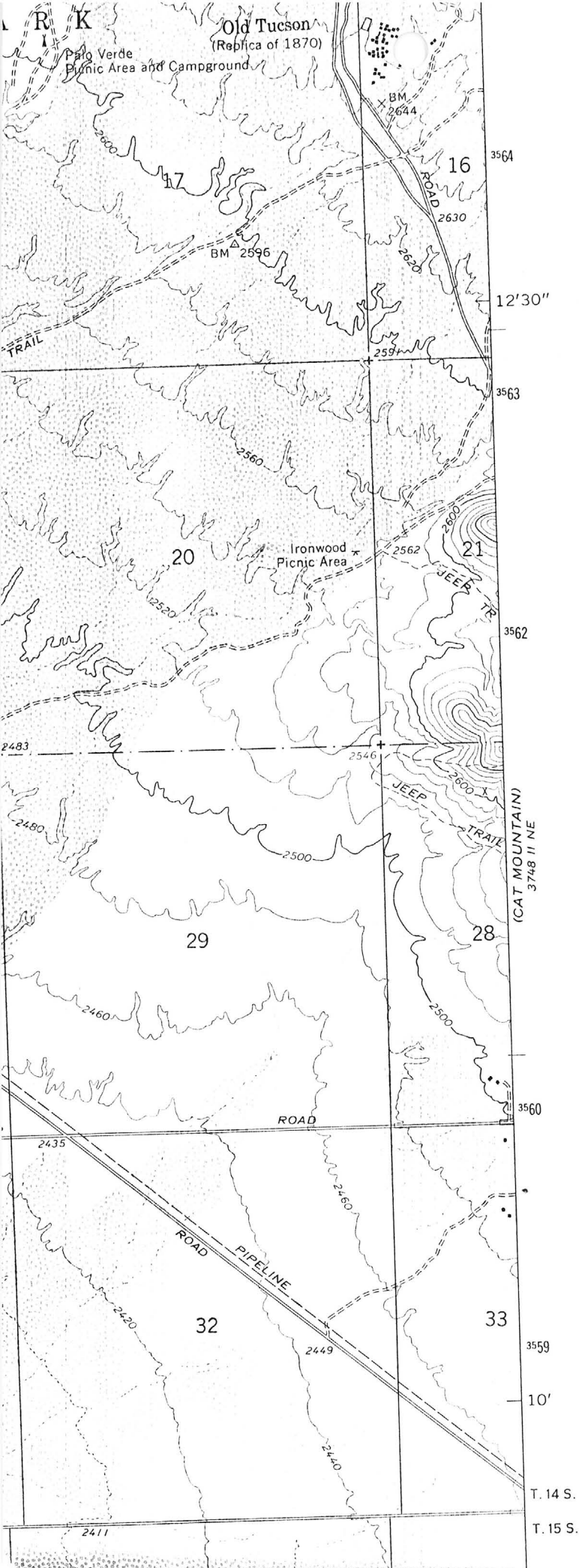
PIMA COUNTY MILS NUMBER: 546

LOCATION: TOWNSHIP 14 S RANGE 12 E SECTION 21 QUARTER S2
LATITUDE: N 32DEG 11MIN 56SEC LONGITUDE: W 111DEG 07MIN 19SEC
TOPO MAP NAME: CAT MOUNTAIN - 7.5 MIN

CURRENT STATUS: UNKNOWN

COMMODITY:
COPPER

BIBLIOGRAPHY:
USBM FILE 463.2/14245
GSA BULL. VOL. 50
SOULE (USBM ENGR ?) EXAMINATION NO. 82
GREELEY, MIKE, 1978, ADMMR SPEC. RPT. NO. 2,
PRIMARY COPPER INDUSTRY OF ARIZ. IN 1975-76
ADMMR PARK HILL PROJECT FILE
ADMMR "U" FILE CU 75



PARK HILL PROJECT

PIMA COUNTY

North of Snyder Hill and Ajo Road, probably in Sec. 28, T14S, R12E. R. Bonnis -
Bagdad in charge. Note GWI 2-3-69

Metler Brothers are still drilling for Bagdad at Park Hill Project. GWI WR 2-1-69

Metler Bros. not now drilling for Bagdad at Park Hill Project. GWI WR 3-15-69



STATE OF ARIZONA

DEPARTMENT OF MINES AND MINERAL RESOURCES

Mineral Building, Fairgrounds, Phoenix, Arizona 85007 • (602) 255-3791

PARK HILL PROJECT

PIMA COUNTY
AMOLE DIST.
T14S, R12E, Sec 21, 28

MILS SEDIMENTARY HILLS STOCK