



## **CONTACT INFORMATION**

Mining Records Curator  
Arizona Geological Survey  
1520 West Adams St.  
Phoenix, AZ 85007  
602-771-1601  
<http://www.azgs.az.gov>  
[inquiries@azgs.az.gov](mailto:inquiries@azgs.az.gov)

The following file is part of the

Arizona Department of Mines and Mineral Resources Mining Collection

## **ACCESS STATEMENT**

These digitized collections are accessible for purposes of education and research. We have indicated what we know about copyright and rights of privacy, publicity, or trademark. Due to the nature of archival collections, we are not always able to identify this information. We are eager to hear from any rights owners, so that we may obtain accurate information. Upon request, we will remove material from public view while we address a rights issue.

## **CONSTRAINTS STATEMENT**

The Arizona Geological Survey does not claim to control all rights for all materials in its collection. These rights include, but are not limited to: copyright, privacy rights, and cultural protection rights. The User hereby assumes all responsibility for obtaining any rights to use the material in excess of "fair use."

The Survey makes no intellectual property claims to the products created by individual authors in the manuscript collections, except when the author deeded those rights to the Survey or when those authors were employed by the State of Arizona and created intellectual products as a function of their official duties. The Survey does maintain property rights to the physical and digital representations of the works.

## **QUALITY STATEMENT**

The Arizona Geological Survey is not responsible for the accuracy of the records, information, or opinions that may be contained in the files. The Survey collects, catalogs, and archives data on mineral properties regardless of its views of the veracity or accuracy of those data.

PRINTED: 05/30/2002

ARIZONA DEPARTMENT OF MINES AND MINERAL RESOURCES AZMILS DATA

PRIMARY NAME: PAC MINE AND MILLSITE

ALTERNATE NAMES:

MOHAVE COUNTY MILS NUMBER: 736

LOCATION: TOWNSHIP 23 N RANGE 18 W SECTION 5 QUARTER NW  
LATITUDE: N 35DEG 24MIN 54SEC LONGITUDE: W 114DEG 13MIN 56SEC  
TOPO MAP NAME: CHLORIDE - 7.5 MIN

CURRENT STATUS: PAST PRODUCER

COMMODITY:  
SILVER  
GOLD

BIBLIOGRAPHY:  
ADMMR PAC MINE AND MILLSITE FILE

PAC MILLSITE & MINE

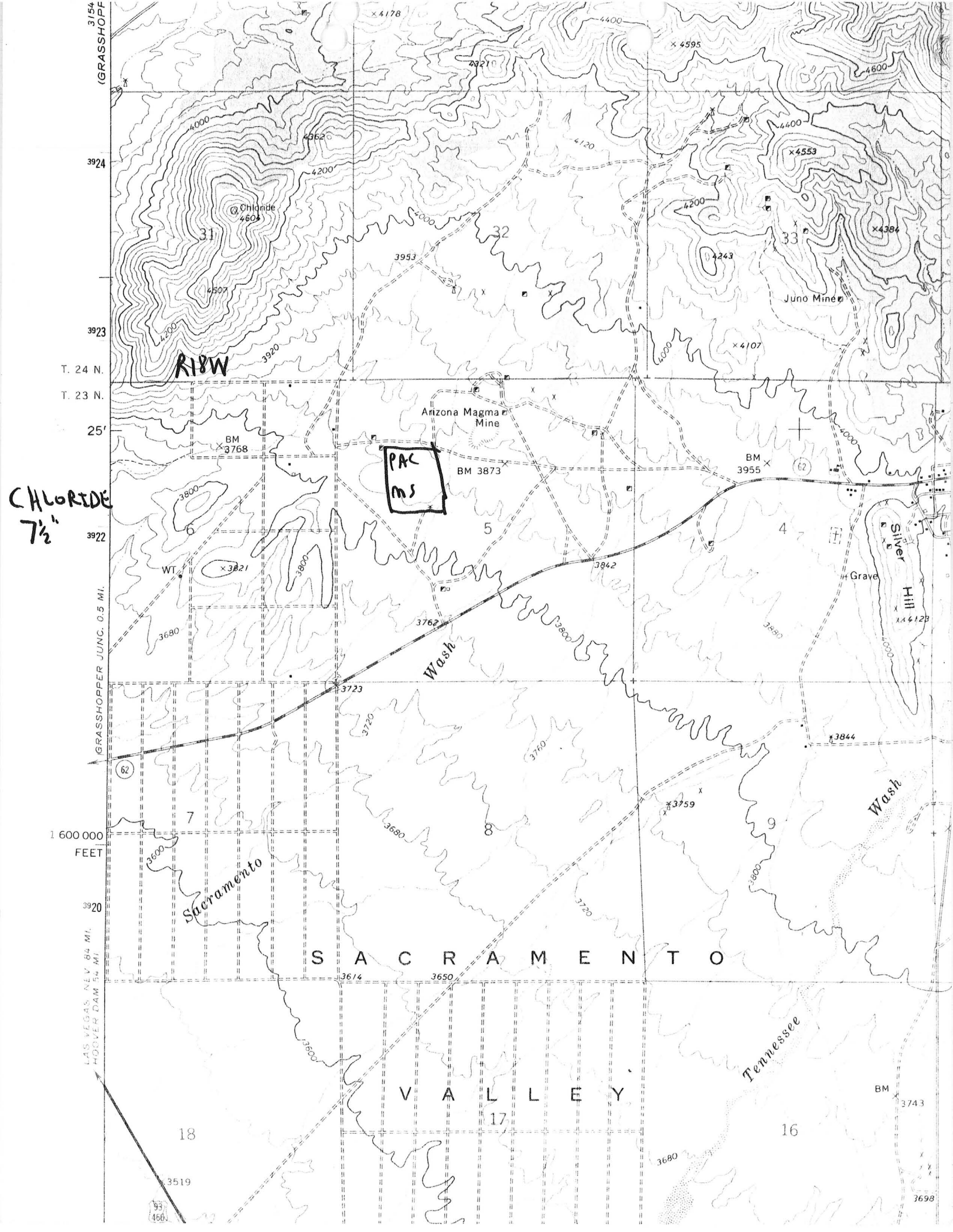
MOHAVE COUNTY

T23N R18W Sec. 5

See: Jupiter Group (file) Mohave County  
Golconda Mine (file) Mohave County  
Esmeralda Mine (file) Mohave County  
Keystone Mine & Mill (file) Mohave County  
Pay Roll (file) Mohave County  
Tennessee-Schuylerkill (file) Mohave County

MILS Index #731

USGS Chloride, Az 7.5



CHLORIDE  
7 1/2"

R18W

PAC  
ms

Sacramento

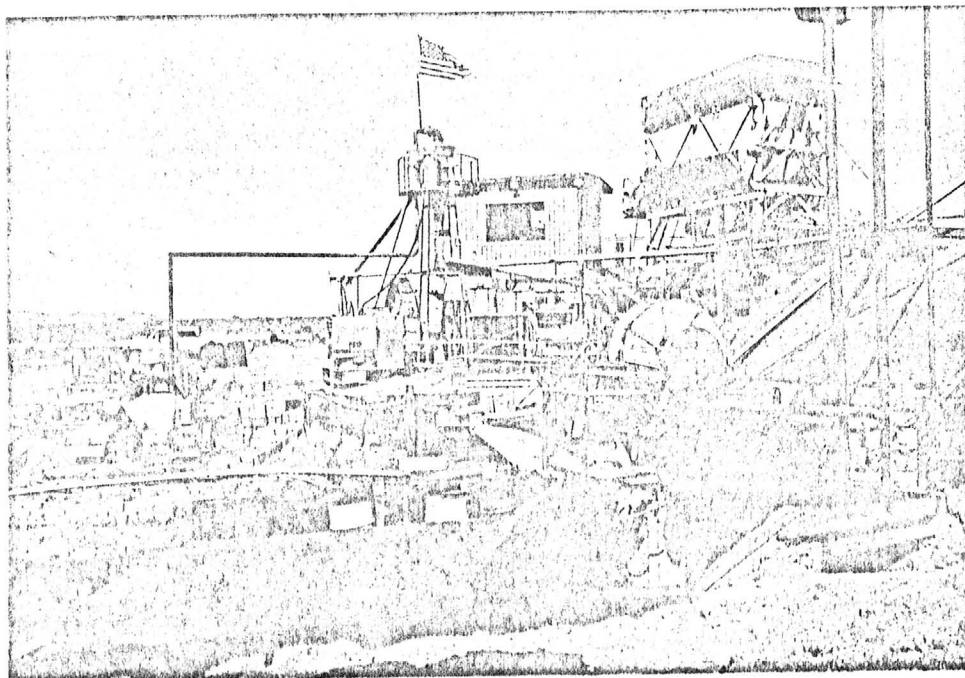
SACRAMENTO

VALLEY

Tennessee

Mohave City  
Spotlight  
Sept. 1983

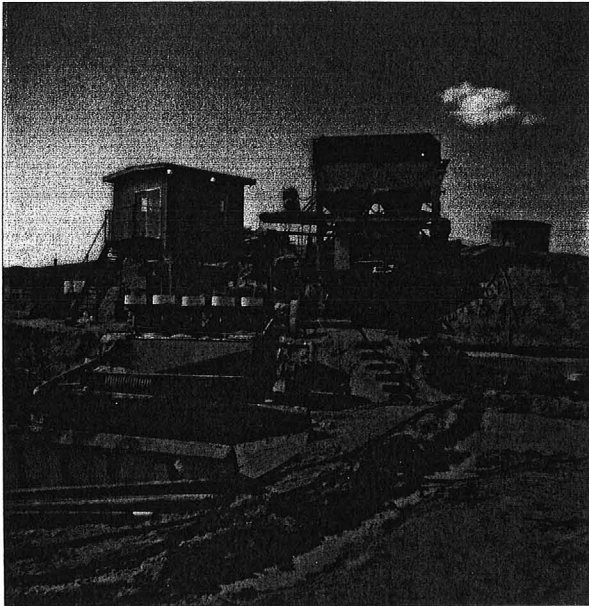
PAC  
Pine  
Lake



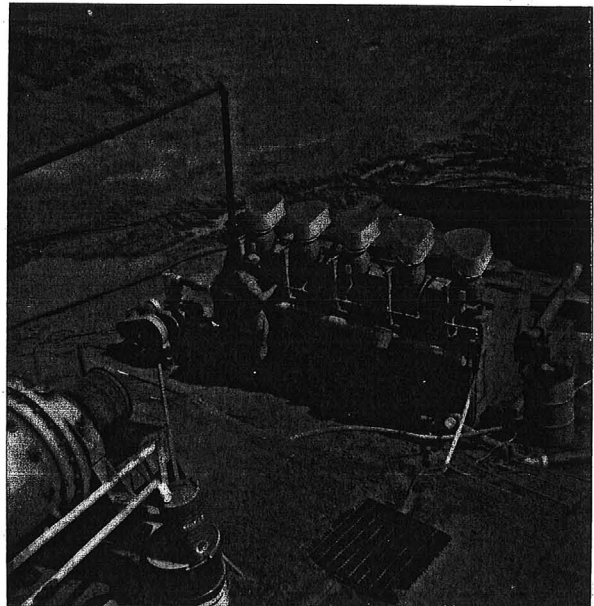
From Roman Malach Photograph Collection: Top, the Tenhard Resources Company mill near Chloride in full operation, and can be seen to the left of the paved road, as approaching Chloride. Bottom, fifty gallon drums of concentrates with gold and silver ready for shipment to smelter.

PAC MILL  
APRIL 14, 1983

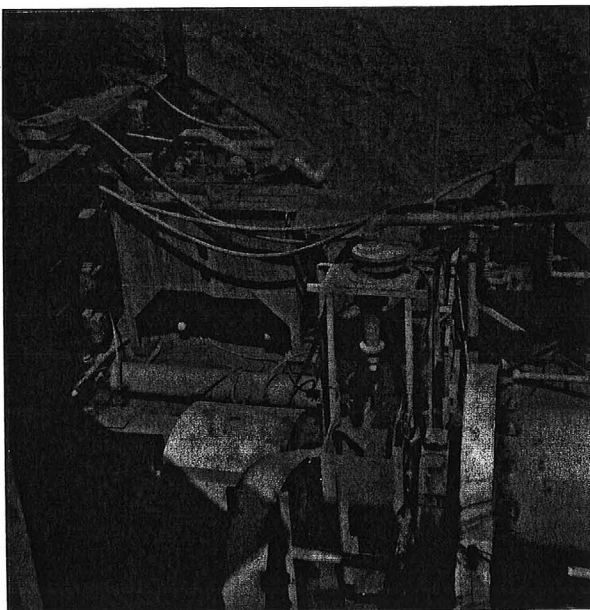
original of  
these photos  
to separate  
scan -



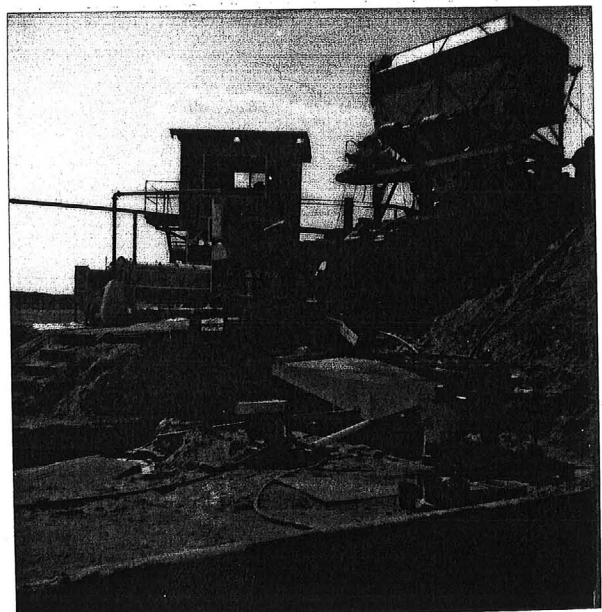
PAC Mill 4/14/83



PAC Mill 4/14/83  
MONTAVE County



PAC Mill 4/14/83



PAC Mill 4/14/83

PAC MILLSITE & MINE

MOHAVE COUNTY

T23N R18W Sec. 5

See: Jupiter Group (file) Mohave County  
Golconda Mine (file) Mohave County  
Esmeralda Mine (file) Mohave County  
Keystone Mine & Mill (file) Mohave County  
Pay Roll (file) Mohave County  
Tennessee-Schuylerkill (file) Mohave County

MILS Index #731

USGS Chloride, Az 7.5



PAC MINE

MOHAVE COUNTY

NJN WR 8/14/87: Dave Fitch of Hecla Mining Company (file) report that they have been drilling on the Pac Mine (file) Mohave County and other associated claims owned by E. M. Barge, P O Box 6, Durango, Colorado 81302 recently on the high to flat anle vein portions of the property.

-----

NJN WR 9/25/87: Omega Press and Produce, have picked up the Cyclopic (file) and the Pac Mine (file) Mohave County. The company is believed to have an office in Bullhead City, reported Fred Johnson.

-----

KAP WR 11/7/87: Fred Johnson, Durango Colorado reported that Al J. Brown, Managing Director, OP&P (Otaga Press and Produce), 916 Nevada Hiway, Unit 3, Boulder City, Nevada 85005, (702) 294-0434 plans to start drilling Ed Barge's property at Chloride. It is either the Pac Mine (file), Mohave County or his Sunset #1-#31 Claims or his K-6 through K-70 Claims.

-----

NJN WR 2/19/88: Jim Kasten reported that the correct name for OP&P is Otago Press and Produce, not Ortago as we have them listed. Their address is 916 Nevada Highway, Boulder City, Nevada 89005 (702) 294-6206. Mr. Kasten reports that they drilled last fall on a property in the northern portion of the Chloride District, Mohave County, probably the Pac Mine (file).

-----



PAC MILLSITE & MINE

MOHAVE COUNTY  
Chloride District

2/26/82 KAP WR: Resources partners is reported to have recently acquired the PAC operation from W. J. Roper and L. W. Hardy. Here they are constructing new heap leach pads, cyanide solution ponds and related facilities. Material from the nearby Juno Mine's dumps was being stockpiled at the project site.

---

KAP WR 2/26/83: Arizona Magma Mine has a silver mineralized zone which has been recently drilled and overburden dozed off across and along the strike. Plans are to mine the deposit as deep as possible from the surface and leach the material at the PAC project site.

---

NJN WR 7/30/82: Ramon Shannon, mining engineer with Cimeta Engineering, Tucson, called and reported that the failure to agglomerate, and the Escapule unit, have caused recovery problems and made a mess of leaching of the Juno dump and other materials at the PAC Mine, Mohave County. The PAC leach is three miles west of Chloride.

---

NJN WR 4/20/84: It was reported that Mountain States Resources (c) operations at the Pac Millsite (file) are closing and the milling equipment is being removed.

---

NJN 8/7/84: It has been called to our attention that an error was made in our Directory of Exploration and Mineral Development in Arizona. The Mountain States Resources that operates the PAC Mill, Tennessee-Shcuylkil et. al. operates out of Lakewood, Colorado and is not the Mountain States Resources in Salt Lake City, Utah.

---

NJN WR 5/24/85: On the way to the Silver Hill Mine, stopped and visited the Pac Mine and Millsite (f) Mohave County which is owned by Lee Mining Co. (c) whose current address is: 6121 Lakeside, Suite 230, Reno, NV 89509, phone (702) 827-8988. The flotation and gravity circuits are still intact, however, Lee Mining Co would like to sell it.

---

**DEPARTMENT OF MINERAL RESOURCES**

**STATE OF ARIZONA  
FIELD ENGINEERS REPORT**

Mine PAC Millsite

Date April 14, 1983

District Mohave County

Engineer Richard R. Beard  
Nyal J. Niemuth

Subject: Mine Visit

The PAC mine has changed ownership since our last visit. The new owners are Mountain States Resources from Lakewood, Colorado. The previous owner, Resources Partners, owns part of Mountain States Resources.

The information in this report was obtained from Doug Lee of the Lee Mining Corporation, P.O. Box 3849, Kingman, Arizona 86401. Lee Mining Corporation is the contractor for the current operations at the PAC mine.

Dump material from the Tennessee-Schuylkill Payroll, Keystone and Ark Mines is being crushed and screened at the Tennessee-Schuylkill dump site. It is then trucked to the PAC Mill Site where it is ground, classified by a cyclone, jigged, tabled and floated, producing various sulfide concentrates containing galena, sphalerite, arsenopyrite, pyrite, silver and gold. Heads are averaging .025 oz Au/ton. Most gold values are being caught in the jigs with the table and float cells making lead and zinc sulfide concentrate.

The mill is currently handling 200 tons per day (3 shifts). The mill consists of (see photo) a grinding mill, cyclone for classification, four jigs, 5 flotation cells and an 8' x 20' table. This equipment is in modular units mounted on skids which makes it easy to move and set up. Used haulage truck beds are used for storage of concentrates. Electrical power is supplied by a portable generating set located at the site. Miscellaneous tanks, bins, trucks and heavy equipment is in the fenced storage yard.

Mr. Lee reported that the (Resources Partner) cyanide leach operation at the Golconda (file) has been shut down with no production of precious metals ever occurring. The BiMetals carbon plant and stripping circuit had been removed from the Golconda Site and was currently sitting in the equipment yard at the PAC mine. Plans for a cyanide leach at the PAC site have been discarded as unrealistic due to the high "dirt" and oxidized sulfide content of the material trucked to the PAC site. It was thought the material would have poor percolation and high chemical consumption.

cc: Tucson Office