



CONTACT INFORMATION

Mining Records Curator
Arizona Geological Survey
1520 West Adams St.
Phoenix, AZ 85007
602-771-1601
<http://www.azgs.az.gov>
inquiries@azgs.az.gov

The following file is part of the

Arizona Department of Mines and Mineral Resources Mining Collection

ACCESS STATEMENT

These digitized collections are accessible for purposes of education and research. We have indicated what we know about copyright and rights of privacy, publicity, or trademark. Due to the nature of archival collections, we are not always able to identify this information. We are eager to hear from any rights owners, so that we may obtain accurate information. Upon request, we will remove material from public view while we address a rights issue.

CONSTRAINTS STATEMENT

The Arizona Geological Survey does not claim to control all rights for all materials in its collection. These rights include, but are not limited to: copyright, privacy rights, and cultural protection rights. The User hereby assumes all responsibility for obtaining any rights to use the material in excess of "fair use."

The Survey makes no intellectual property claims to the products created by individual authors in the manuscript collections, except when the author deeded those rights to the Survey or when those authors were employed by the State of Arizona and created intellectual products as a function of their official duties. The Survey does maintain property rights to the physical and digital representations of the works.

QUALITY STATEMENT

The Arizona Geological Survey is not responsible for the accuracy of the records, information, or opinions that may be contained in the files. The Survey collects, catalogs, and archives data on mineral properties regardless of its views of the veracity or accuracy of those data.

PRINTED: 05/30/2002

ARIZONA DEPARTMENT OF MINES AND MINERAL RESOURCES AZMILS DATA

PRIMARY NAME: PACIFIC GROUP

ALTERNATE NAMES:

LITTLE JACK FRACTION
EL RESO

MOHAVE COUNTY MILS NUMBER: 15B

LOCATION: TOWNSHIP 19 N RANGE 20 W SECTION 4 QUARTER SE
LATITUDE: N 35DEG 03MIN 37SEC LONGITUDE: W 114DEG 24MIN 48SEC
TOPO MAP NAME: OATMAN - 7.5 MIN

CURRENT STATUS: UNKNOWN

COMMODITY:

GOLD LODE

BIBLIOGRAPHY:

USGS OATMAN QUAD
ADMMR HOUSEHOLDER MAP
SEE: ADMMR UNITED EASTERN MINE FILE, HAFF &
COLWEL MAP
ADMMR PACIFIC GROUP FILE

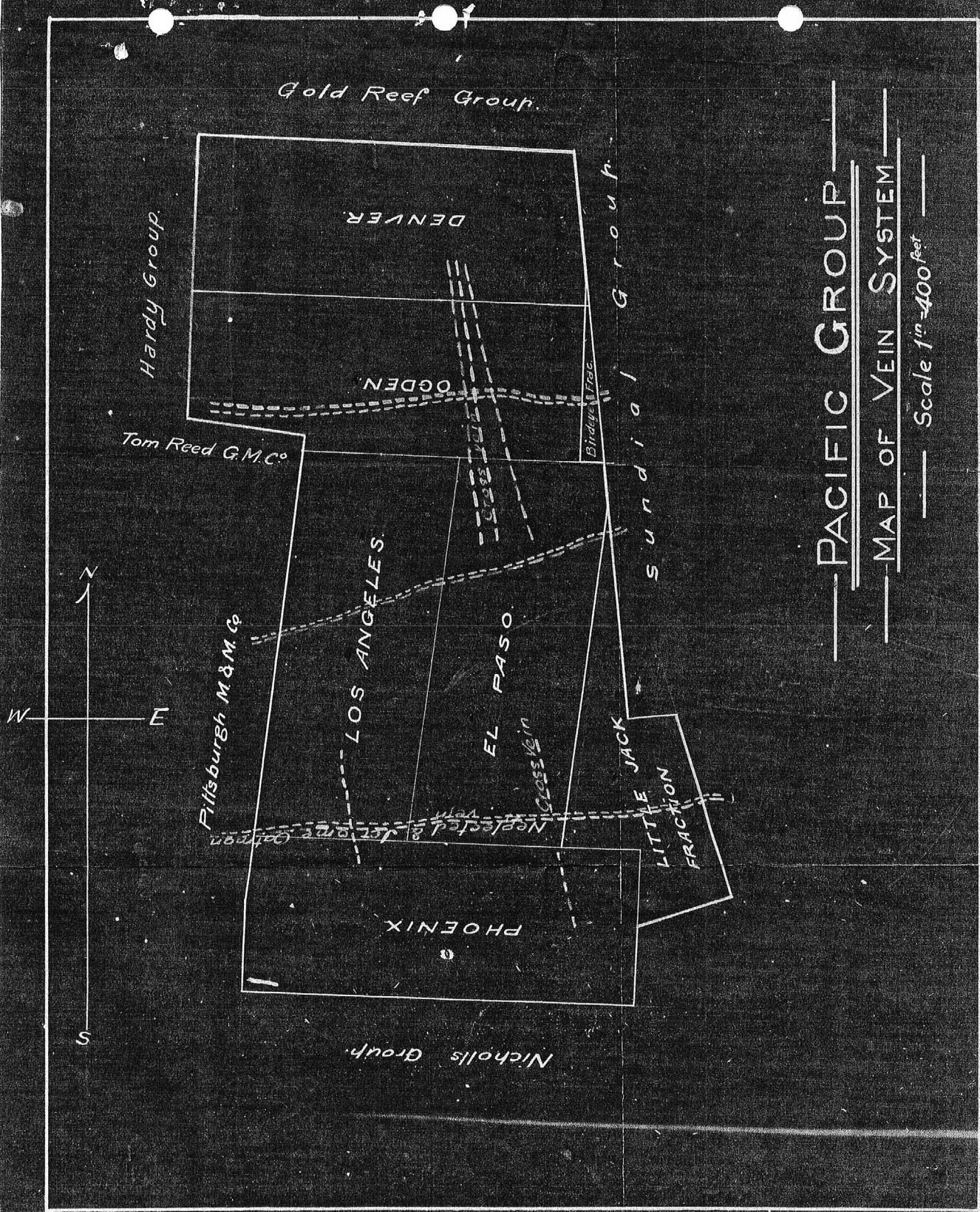
May 27, 1957

10 mi S.E. of Kingman

No information on this property.

MARK GEMMILL

*See: Kingman Mining Project
/ claim map*



MEMORANDUM

TO: B. W. BROWN

October 7, 1943

FROM: J. S. COUPAL

SUBJECT: PACIFIC GROUP

I note your comments about the roads to the Pacific Group. I will contact Mr. Hammer and see what can be done toward meeting with him and making the examination. I have asked a Mr. Shanklin to contact Mr. Hammer to look over his property which joins the Pacific Group; and, if possible, I will try to arrange to have you meet with Mr. Hammer and Mr. Shanklin and make the joint examination.

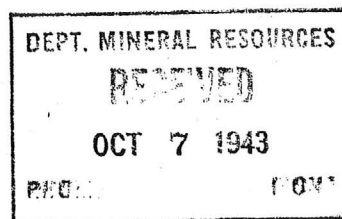
J. S. Coupal

MEMORANDUM

To: J. S. Coupal

From: B. W. Brown- FIELD

Subject: Pacific Group



From all information that I can gather the road into the Pacific Group has not been built. I checked at the St. Michael Hotel for our friend Earl Peterson, engineer. He has flew the coop -- as they say. I gathered the impression that he was not solvent at the time of departure. I do know that he still owes me five simoleons which I intend to collect out of his hide the next we meet.

Bill

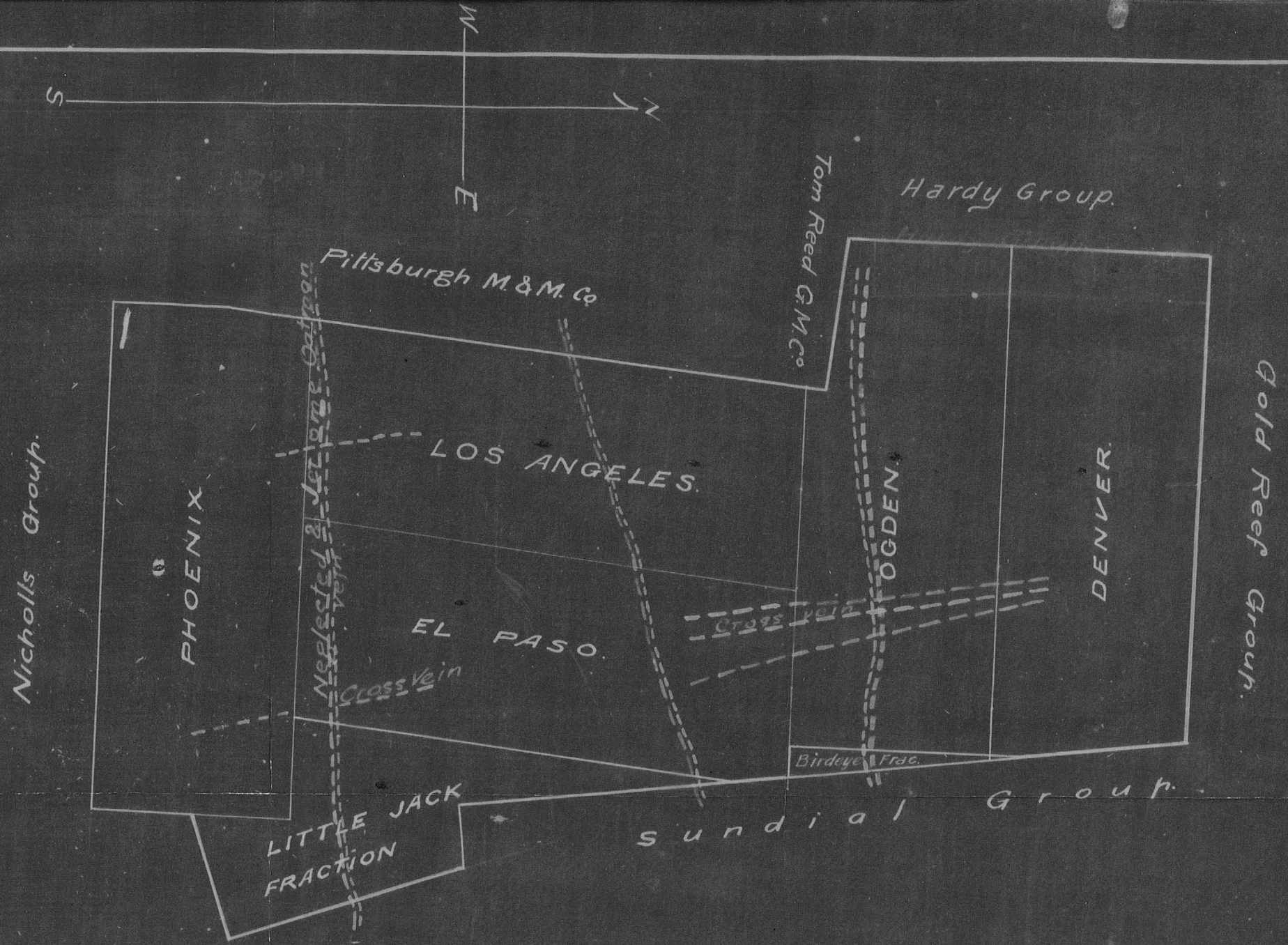
May 27, 1957

10 mi S.E. of Kingman

No information on this property.

MARK GEMMILL

*See: Kingman Mining Project
/ claim map*



——— PACIFIC GROUP ———
 ——— MAP OF VEIN SYSTEM ———
 ——— Scale 1ⁱⁿ = 400^{feet} ———