



CONTACT INFORMATION

Mining Records Curator
Arizona Geological Survey
1520 West Adams St.
Phoenix, AZ 85007
602-771-1601
<http://www.azgs.az.gov>
inquiries@azgs.az.gov

The following file is part of the

Arizona Department of Mines and Mineral Resources Mining Collection

ACCESS STATEMENT

These digitized collections are accessible for purposes of education and research. We have indicated what we know about copyright and rights of privacy, publicity, or trademark. Due to the nature of archival collections, we are not always able to identify this information. We are eager to hear from any rights owners, so that we may obtain accurate information. Upon request, we will remove material from public view while we address a rights issue.

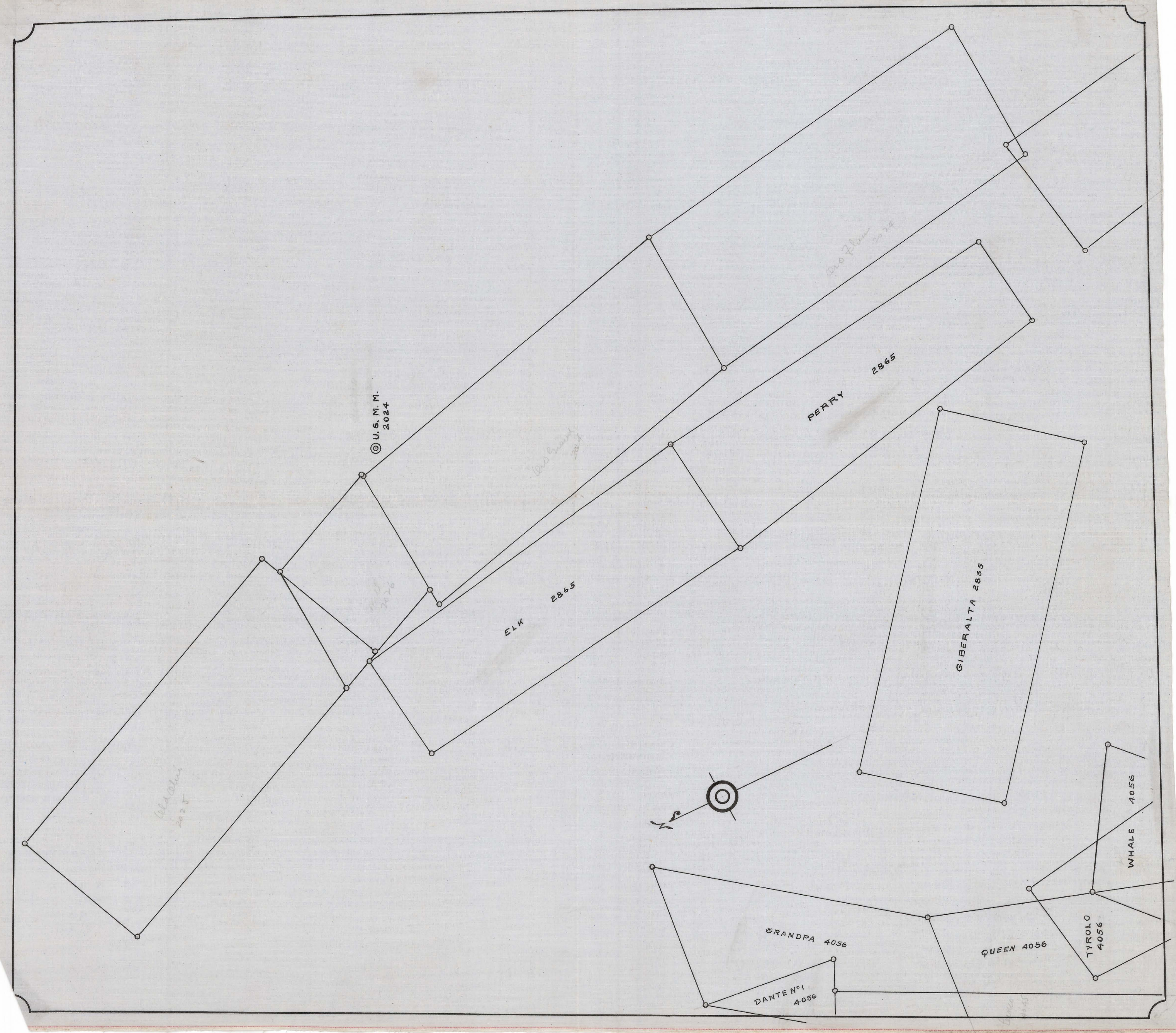
CONSTRAINTS STATEMENT

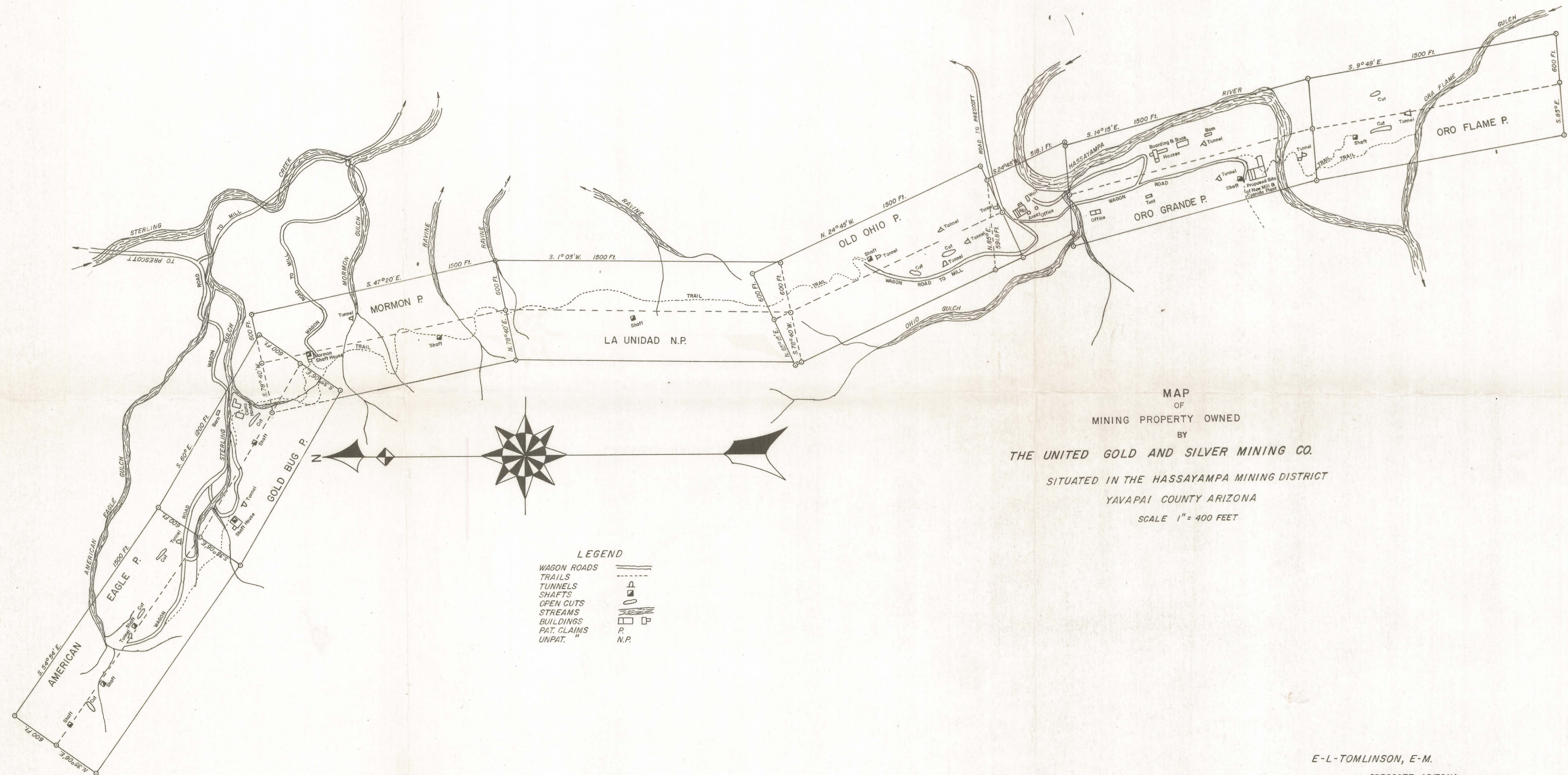
The Arizona Geological Survey does not claim to control all rights for all materials in its collection. These rights include, but are not limited to: copyright, privacy rights, and cultural protection rights. The User hereby assumes all responsibility for obtaining any rights to use the material in excess of "fair use."

The Survey makes no intellectual property claims to the products created by individual authors in the manuscript collections, except when the author deeded those rights to the Survey or when those authors were employed by the State of Arizona and created intellectual products as a function of their official duties. The Survey does maintain property rights to the physical and digital representations of the works.

QUALITY STATEMENT

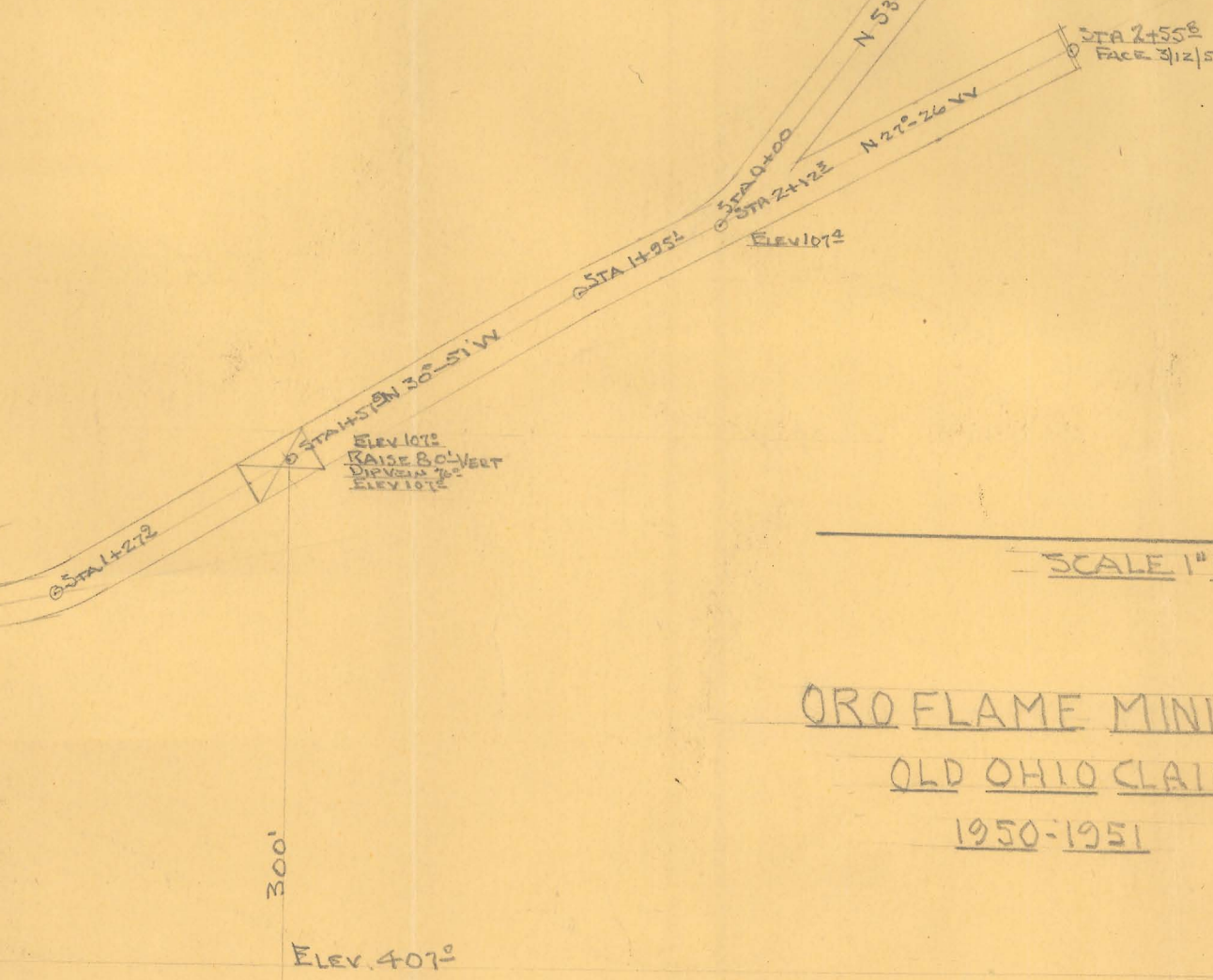
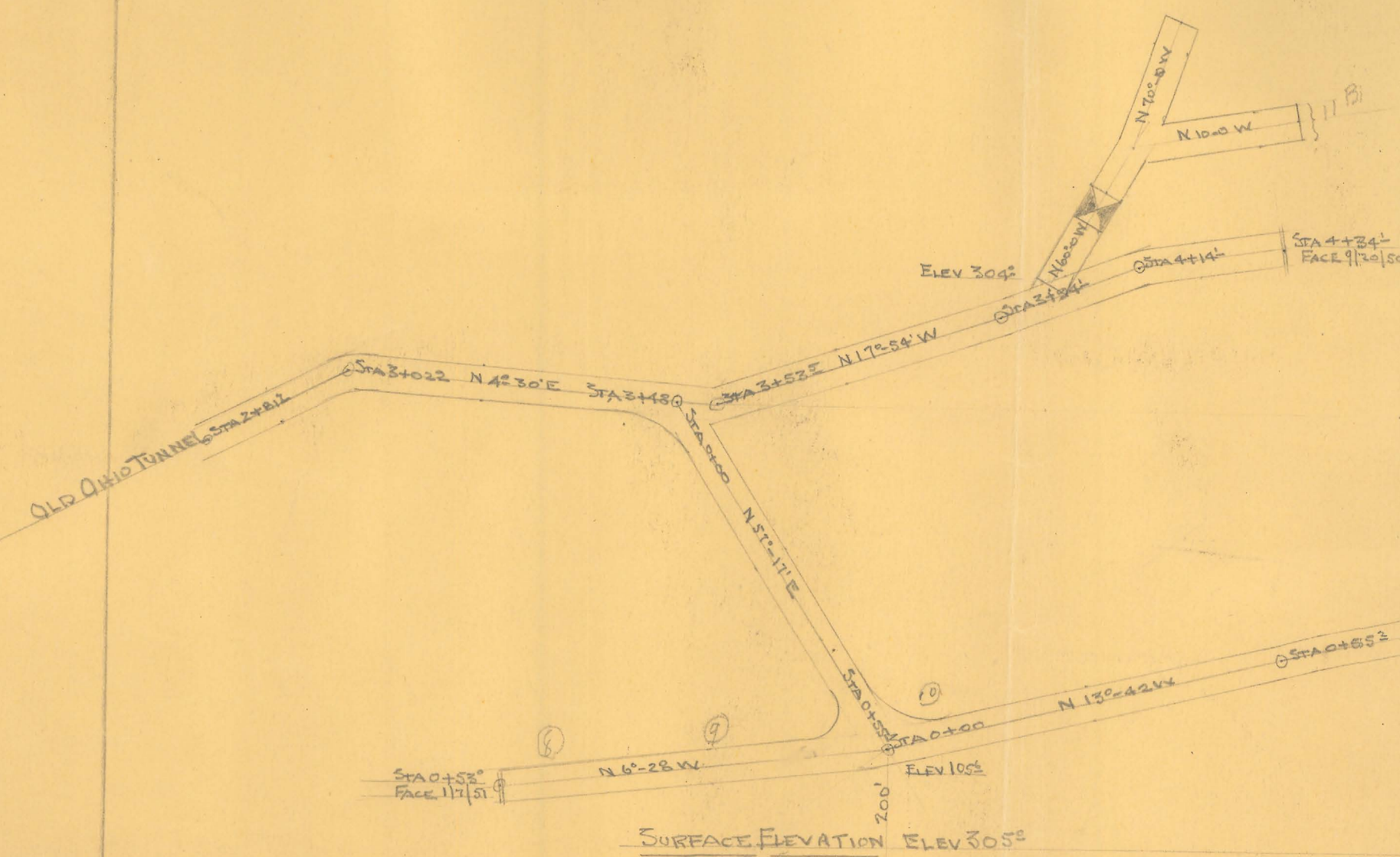
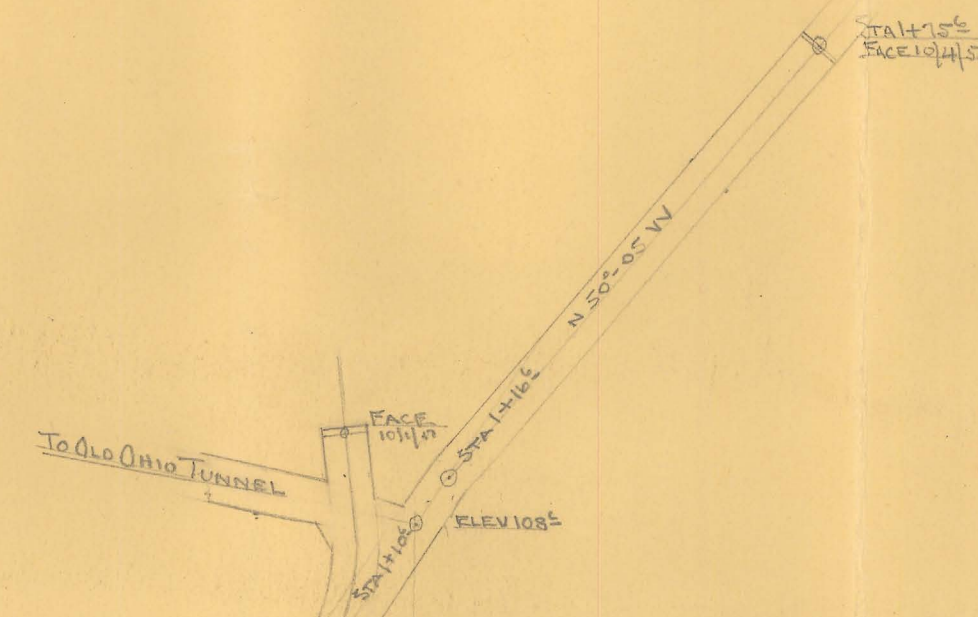
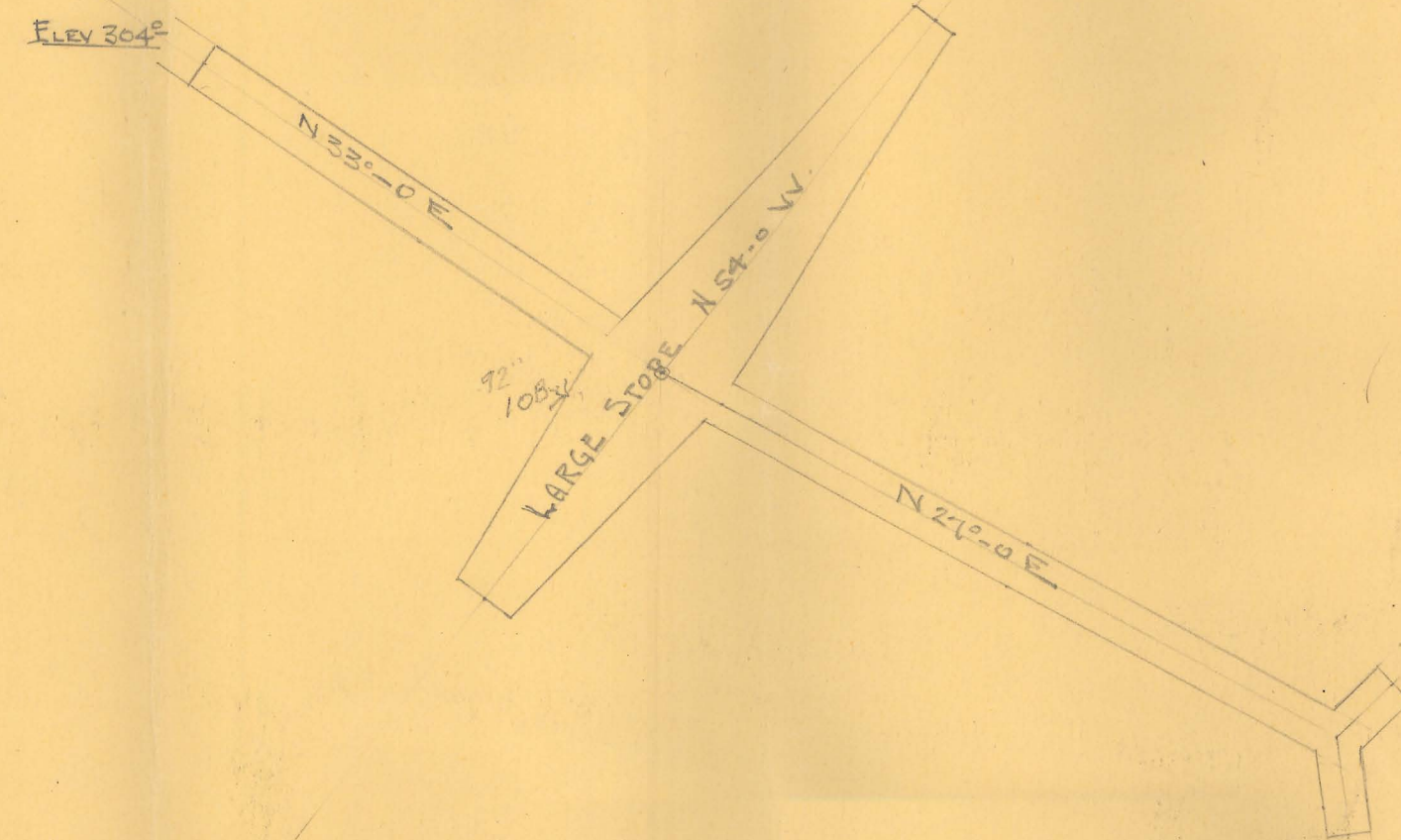
The Arizona Geological Survey is not responsible for the accuracy of the records, information, or opinions that may be contained in the files. The Survey collects, catalogs, and archives data on mineral properties regardless of its views of the veracity or accuracy of those data.





NOTE: This drawing traced from obscured blue lineprint.
Circa 1910 - 1925 (?)
TRACED BY: DIETZ AND ASSOCIATES
4706 N. 31st DRIVE
PHOENIX, AZ 85017
(602) 841-1744
DATE: April 9, 1987

E-L-TOMLINSON, E-M.
PRESCOTT, ARIZONA



ORD FLAME MINING CO
OLD OHIO CLAIM
1950-1951

SCALE 1" = 20'

NORTH

LONGITUDINAL SECTION
THROUGH WORKINGS
ON
ORO FLAME CLAIM
SHOWING ELEVATIONS
FEB. 14, 1929

Oro Flame Gulch

Upper Tunnel

Stoped

Stoped

74' Stoped

Shaft

Winze 32'

63'

Stoped

115' New Winze

130'

Stoped \$14.00 per ton

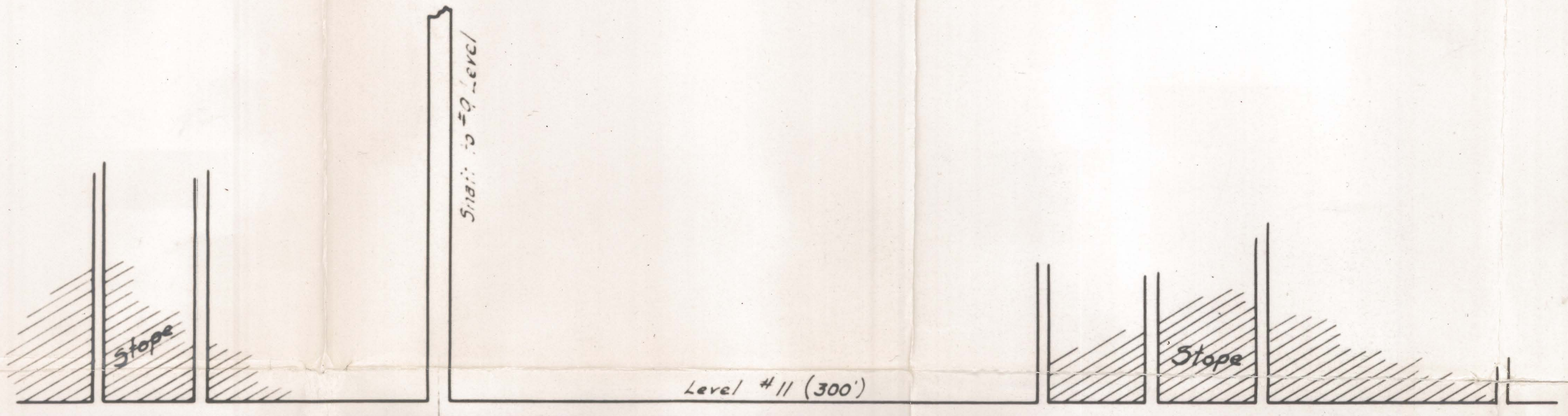
Stoped \$22.00 per ton

Crosscut

Lower Tunnel

Hassayampa River

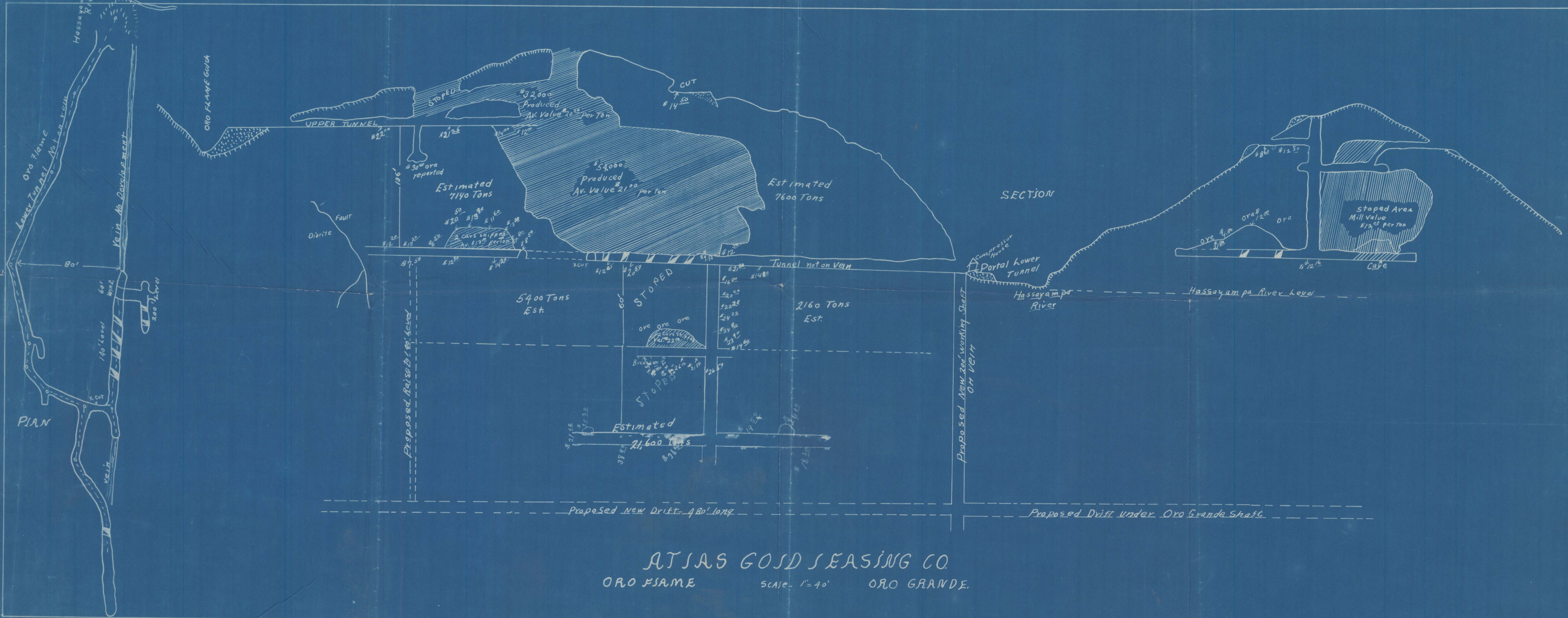
N ← —————→ S

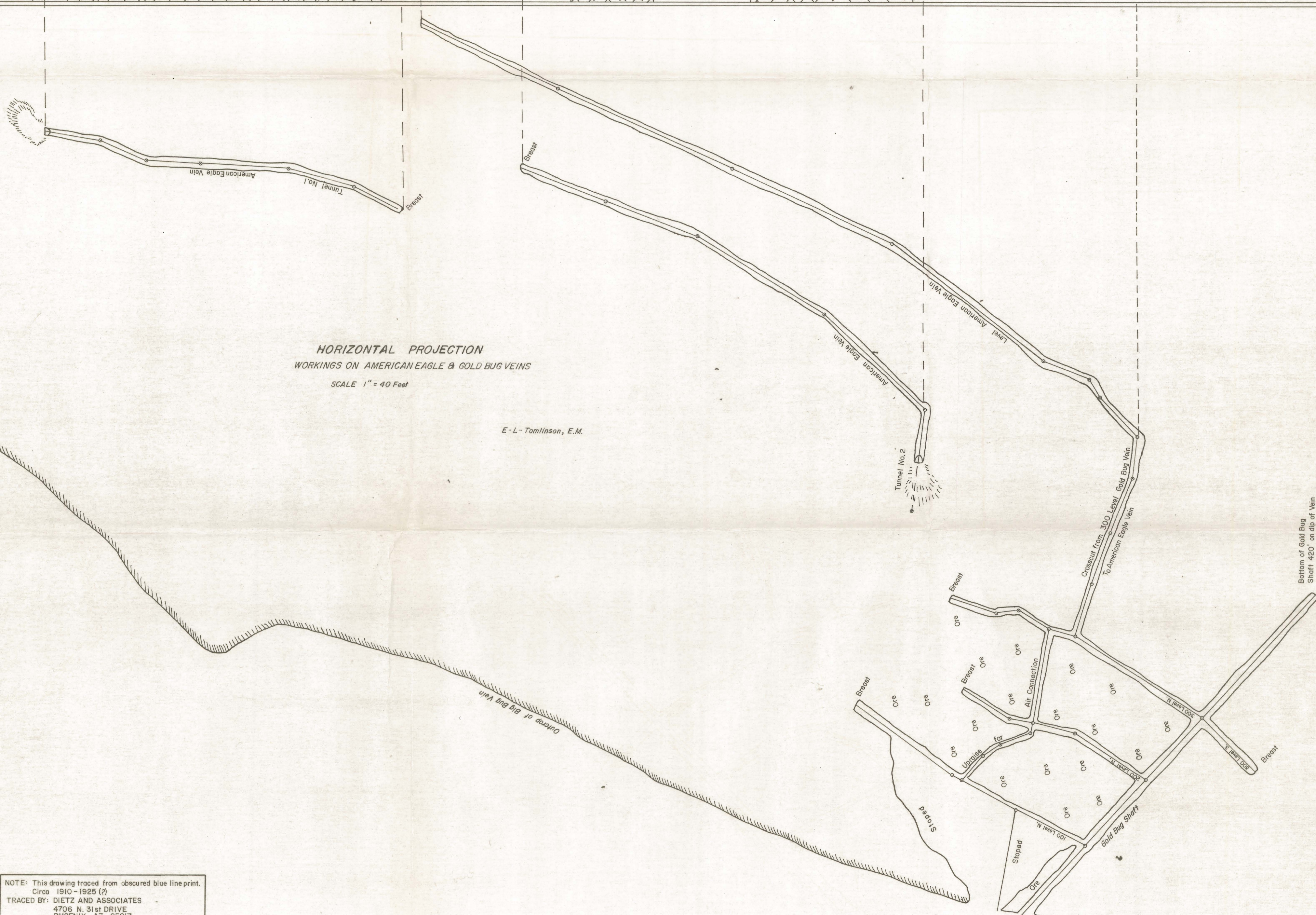
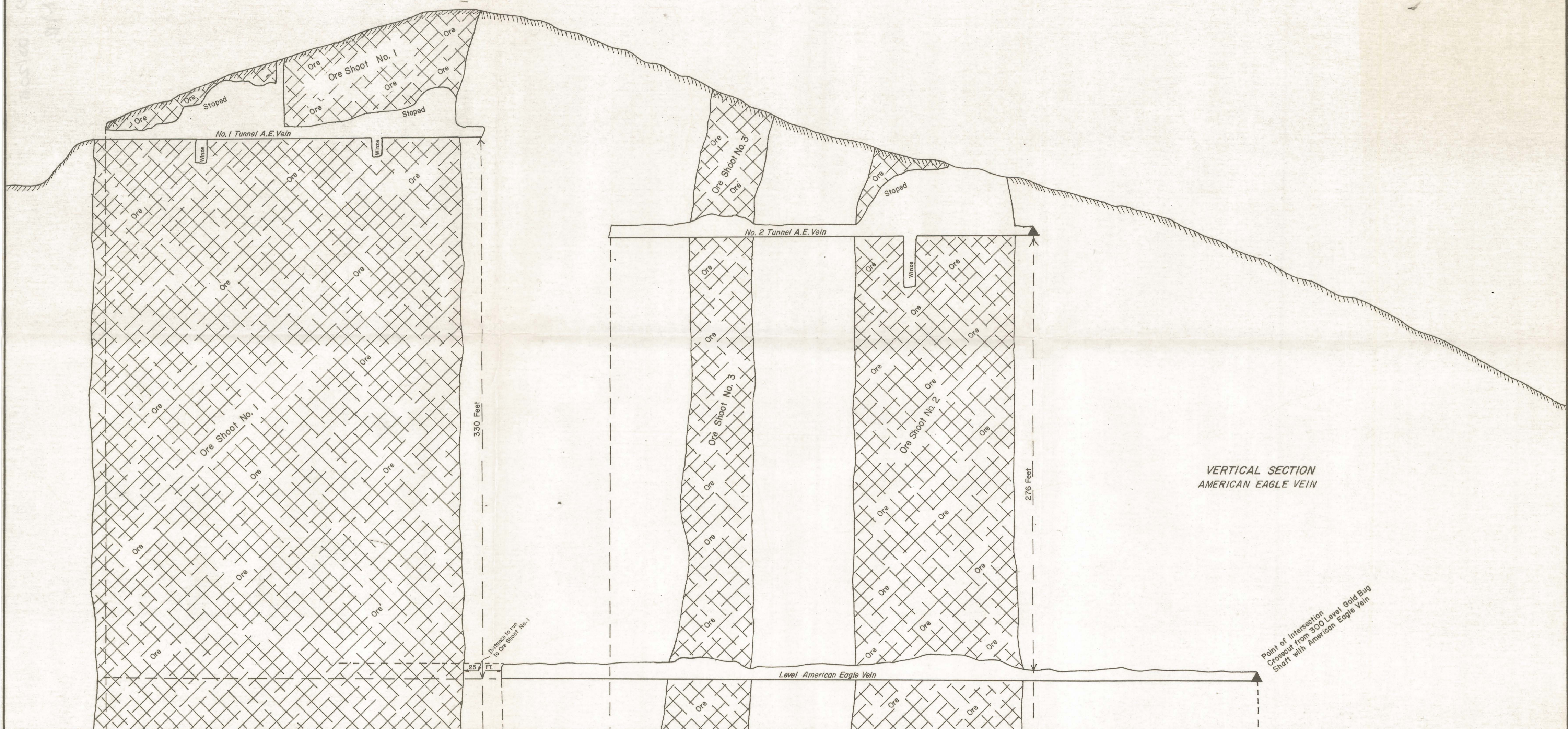


Sample Number	Width	Value #
1		2300
2		1222
3		1060
4		992
5		606
6		1558
7		2604
8		3484
9		2840
10		3772
11		3728
12		1318
13		2268
14		2324
15		5804
16		521
17		931
18		2827
19		2487
20		2774
21		513
22		677
23		360
24		370
25		470
26		1216
27		860
Average		1348

Values based on Gold at \$20.67 per ounce and Silver at 50¢ per ounce

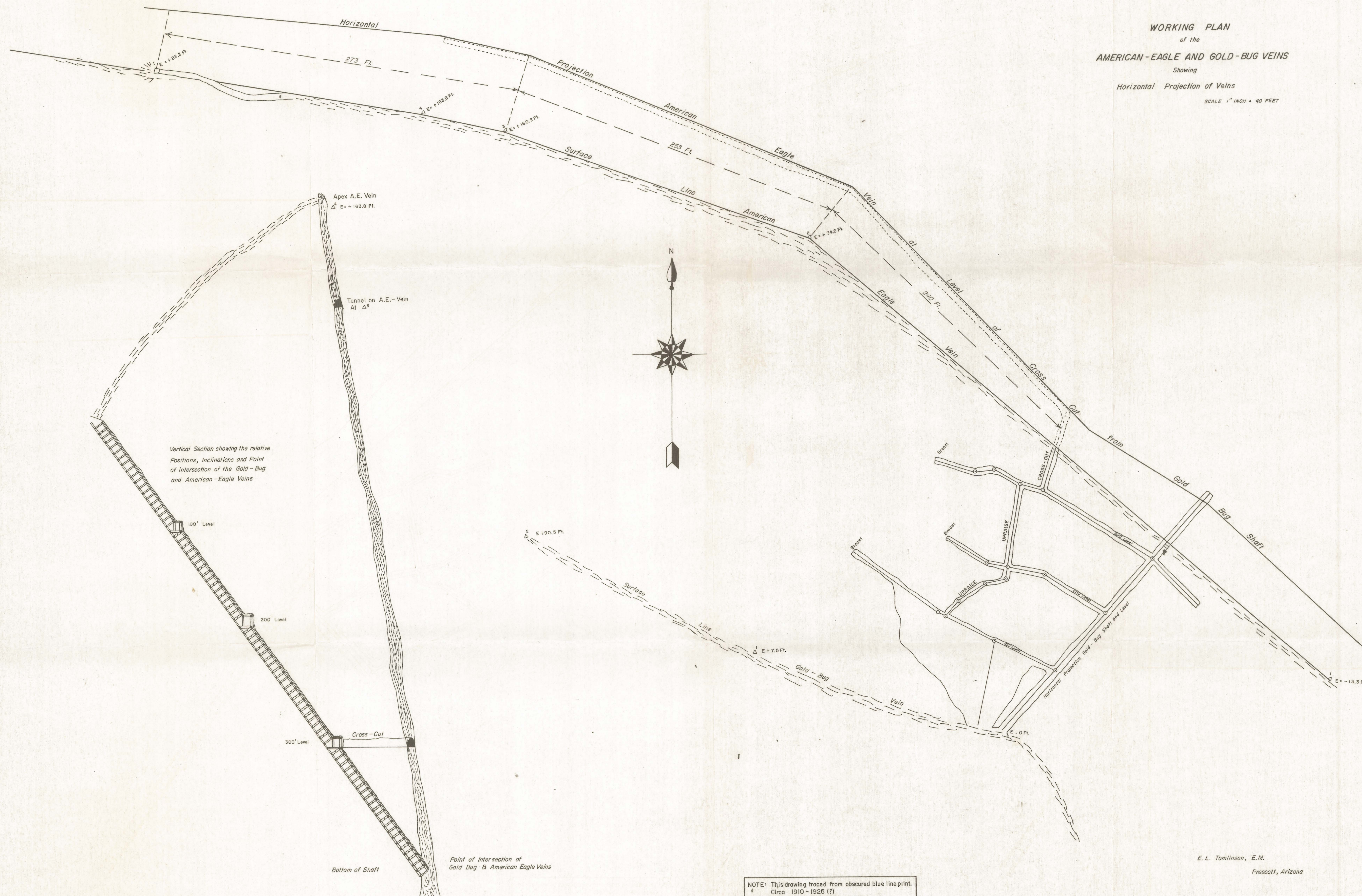
SECTION
PART OF WORKINGS SOUTH OF SHAFT
TIGER GOLD CO.
 Scale 1" = 55.2' MAY 15 1934
 J.S.M.





NOTE: This drawing traced from obscured blue lineprint.
Circa 1910-1925 (?)
TRACED BY: DIETZ AND ASSOCIATES
4706 N. 31st DRIVE
PHOENIX, AZ 85017
(602) 841-1744
DATE: April 9, 1987

WORKING PLAN
of the
AMERICAN-EAGLE AND GOLD-BUG VEINS
Showing
Horizontal Projection of Veins
SCALE 1" INCH = 40 FEET



NOTE: This drawing traced from obscured blue line print.
Circa 1910 - 1925 (?)
TRACED BY: DIETZ AND ASSOCIATES
4706 N. 31st DRIVE
PHOENIX, AZ 85017
(602)841-1744
DATE: April 9, 1987

E. L. Tomlinson, E.M.
Prescott, Arizona