



CONTACT INFORMATION

Mining Records Curator
Arizona Geological Survey
1520 West Adams St.
Phoenix, AZ 85007
602-771-1601
<http://www.azgs.az.gov>
inquiries@azgs.az.gov

The following file is part of the

Arizona Department of Mines and Mineral Resources Mining Collection

ACCESS STATEMENT

These digitized collections are accessible for purposes of education and research. We have indicated what we know about copyright and rights of privacy, publicity, or trademark. Due to the nature of archival collections, we are not always able to identify this information. We are eager to hear from any rights owners, so that we may obtain accurate information. Upon request, we will remove material from public view while we address a rights issue.

CONSTRAINTS STATEMENT

The Arizona Geological Survey does not claim to control all rights for all materials in its collection. These rights include, but are not limited to: copyright, privacy rights, and cultural protection rights. The User hereby assumes all responsibility for obtaining any rights to use the material in excess of "fair use."

The Survey makes no intellectual property claims to the products created by individual authors in the manuscript collections, except when the author deeded those rights to the Survey or when those authors were employed by the State of Arizona and created intellectual products as a function of their official duties. The Survey does maintain property rights to the physical and digital representations of the works.

QUALITY STATEMENT

The Arizona Geological Survey is not responsible for the accuracy of the records, information, or opinions that may be contained in the files. The Survey collects, catalogs, and archives data on mineral properties regardless of its views of the veracity or accuracy of those data.

PRINTED: 04/29/2002

ARIZONA DEPARTMENT OF MINES AND MINERAL RESOURCES AZMILS DATA

PRIMARY NAME: OLD SAMPLE

ALTERNATE NAMES:
SAMPLE

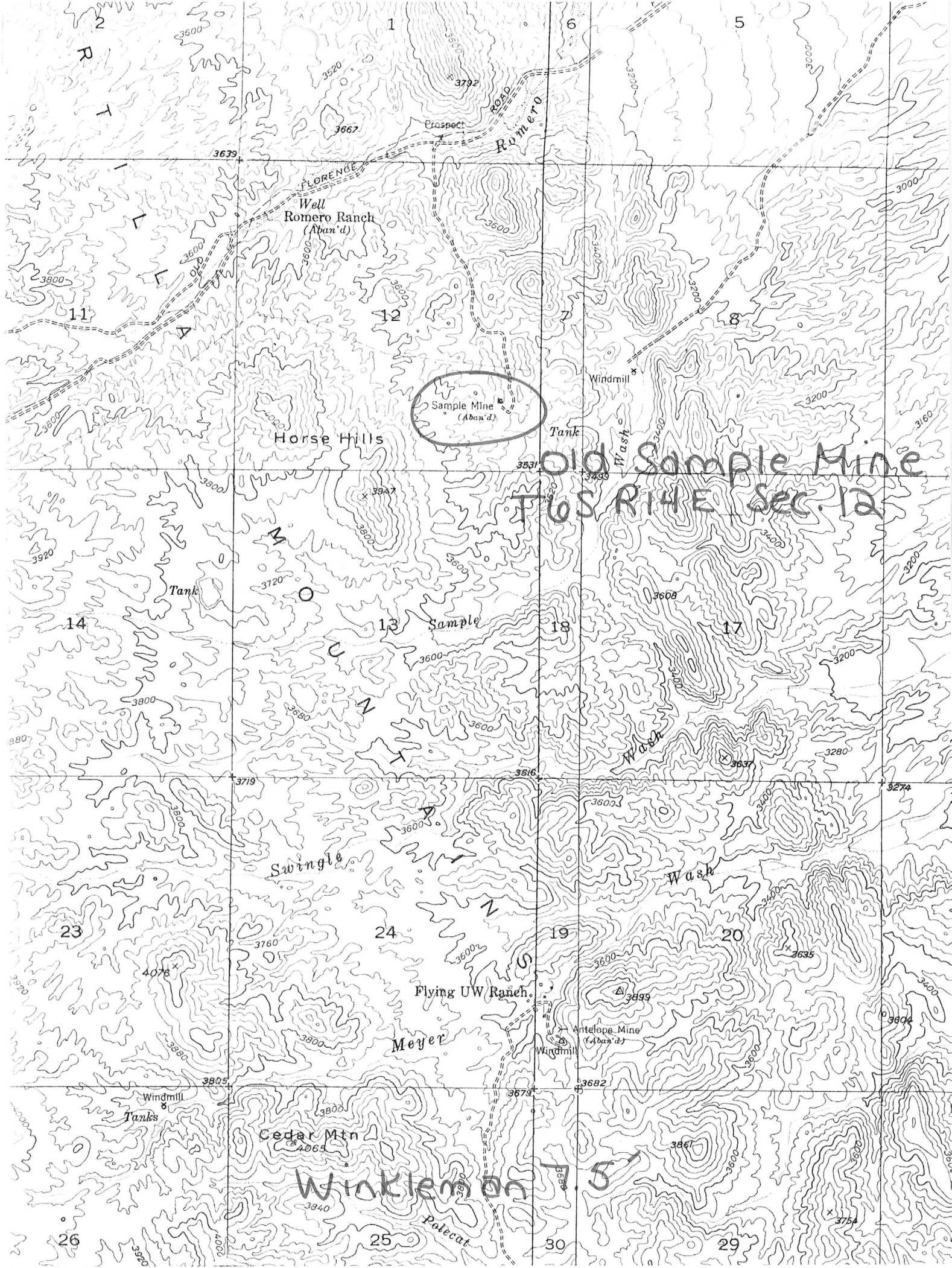
PINAL COUNTY MILS NUMBER: 403

LOCATION: TOWNSHIP 6 S RANGE 14 E SECTION 12 QUARTER SE
LATITUDE: N 32DEG 55MIN 19SEC LONGITUDE: W 110DEG 50MIN 48SEC
TOPO MAP NAME: WINKELMAN - 7.5 MIN

CURRENT STATUS: PAST PRODUCER

COMMODITY:
COPPER
SILVER

BIBLIOGRAPHY:
USGS WINKELMAN QUAD
ADMMR OLD SAMPLE MINE FILE



Old Sample Mine
T6S R14E Sec. 12

Sample Mine
(Aban'd)

Well
Romero Ranch
(Aban'd)

Horse Hills

Sample

Flying UW Ranch

Swingle

Meyer

Cedar Mtn

Winklen

Antelope Mine
(Aban'd)

Palecat

Romero
ROAD

FLORENCE

Windmill
Wash

Wash

Wash

Windmill
Tanks

OLD SAMPLE MINE

PINAL COUNTY
COTTONWOOD DISTRICT
T6S R14E Sec. 12

MILS Pinal Couty Index #403

Winkleman 7.5' Topo (included in file)

*GENERAL REFERENCES

REFERENCE 1 F1 < ABGMT-USBM FILE DATA >
 REFERENCE 2 F2 < USBM FILE DATA, CLUSTER # 636 >
 REFERENCE 3 F3 < USGS GEOLOGICAL QUADRANGLE MAP GQ 1106, 1974 >
 REFERENCE 4 F4 < >

NS < 3 TO 5 MILES NE OF MINE, IN SAME DISTRICT, AND PROBABLE RELATED MINERALIZATION >

#403

U.S. CRIB-SITE FORM

RECORD IDENTIFICATION

RECORD NUMBER B10 < >
 REPORT DATE G1 < 8.2.80.4 >
 REPORTER(SUPERVISOR) G2 < BEST, D.N.E. >
 REPORTER AFFILIATION G5 < ABGMT >
 SYNONYMS A11 < SAMPLE MINE >
 RECORD TYPE B20 < X, I, M >
 INFORMATION SOURCE B30 < 1, 2, >
 DEPOSIT NUMBER B40 < >
 FILE LINK IDENT. B50 < USBM-0040211065 >
 (last, first, middle initial) (last, first, middle initial)

LOCATION

MINING DISTRICT/AREA A30 < COTTONWOOD >
 COUNTY A60 < PINAL COUNTY > STATE A50 < A.Z. > COUNTRY A40 < U.S. >
 PHYSIOGRAPHIC PROV A63 < 1, 2, 8 >
 DRAINAGE AREA A62 < 1, 5, 0, 5, 0, 1, 0, 0, 8 >
 QUADRANGLE NAME A90 < WINKLEMAN QUADRANGLE > LAND STATUS A64 < 3, 0, 8, 8, 1, 9, 7, 9, 2 >
 SECOND QUAD NAME A92 < > QUADRANGLE SCALE A100 < 24, 0, 0, 0 >
 ELEVATION A107 < 3, 5, 2, 0, 8, F.T. > SECOND QUAD SCALE A91 < >

JTM
 NORTHING A120 < 3, 6, 4, 2, 4, 5, 3 >
 EASTING A130 < 5, 1, 4, 3, 3, 6 >
 ZONE NUMBER A110 < 1, 2 >

*ACCURACY
 ACCURATE ACC (circle)
 ESTIMATED (S) < NO UTM ON QUAD. UTM DERIVED FROM LAT./LONG. COMPUTATION >

GEODETTIC
 LATITUDE A70 < > N
 LONGITUDE A80 < > W

CADASTRAL
 TOWNSHIP(S) A77 < 0, 0, 6, S > RANGE(S) A78 < 0, 1, 4, E >
 SECTION(S) A79 < 12 >
 SECTION FRACTION(S) A76 < NE OF SE >
 MERIDIAN(S) A81 < GILA AND SALT RIVER >

POSITION FROM NEAREST PROMINENT LOCALITY A82 < 1/2 MILE N.E. OF HORSE HILLS >
 LOCATION COMMENTS A83 < 1/2 MILE WEST OF SAMPLE WASH. APPROXIMATELY 6 MILES SW OF WINKLEMAN >

