



## CONTACT INFORMATION

Mining Records Curator  
Arizona Geological Survey  
1520 West Adams St.  
Phoenix, AZ 85007  
602-771-1601  
<http://www.azgs.az.gov>  
[inquiries@azgs.az.gov](mailto:inquiries@azgs.az.gov)

The following file is part of the

Arizona Department of Mines and Mineral Resources Mining Collection

## ACCESS STATEMENT

These digitized collections are accessible for purposes of education and research. We have indicated what we know about copyright and rights of privacy, publicity, or trademark. Due to the nature of archival collections, we are not always able to identify this information. We are eager to hear from any rights owners, so that we may obtain accurate information. Upon request, we will remove material from public view while we address a rights issue.

## CONSTRAINTS STATEMENT

The Arizona Geological Survey does not claim to control all rights for all materials in its collection. These rights include, but are not limited to: copyright, privacy rights, and cultural protection rights. The User hereby assumes all responsibility for obtaining any rights to use the material in excess of "fair use."

The Survey makes no intellectual property claims to the products created by individual authors in the manuscript collections, except when the author deeded those rights to the Survey or when those authors were employed by the State of Arizona and created intellectual products as a function of their official duties. The Survey does maintain property rights to the physical and digital representations of the works.

## QUALITY STATEMENT

The Arizona Geological Survey is not responsible for the accuracy of the records, information, or opinions that may be contained in the files. The Survey collects, catalogs, and archives data on mineral properties regardless of its views of the veracity or accuracy of those data.

PRINTED: 04/29/2002

ARIZONA DEPARTMENT OF MINES AND MINERAL RESOURCES AZMILS DATA

PRIMARY NAME: NORMA B

ALTERNATE NAMES:

MOHAVE COUNTY MILS NUMBER: 777

LOCATION: TOWNSHIP 12 N RANGE 12 W SECTION 35 QUARTER C  
LATITUDE: N 34DEG 20MIN 22SEC LONGITUDE: W 113DEG 28MIN 36SEC  
TOPO MAP NAME: PALMERITA RANCH - 7.5 MIN

CURRENT STATUS: UNKNOWN

COMMODITY:

COPPER SULFIDE

LEAD

ZINC

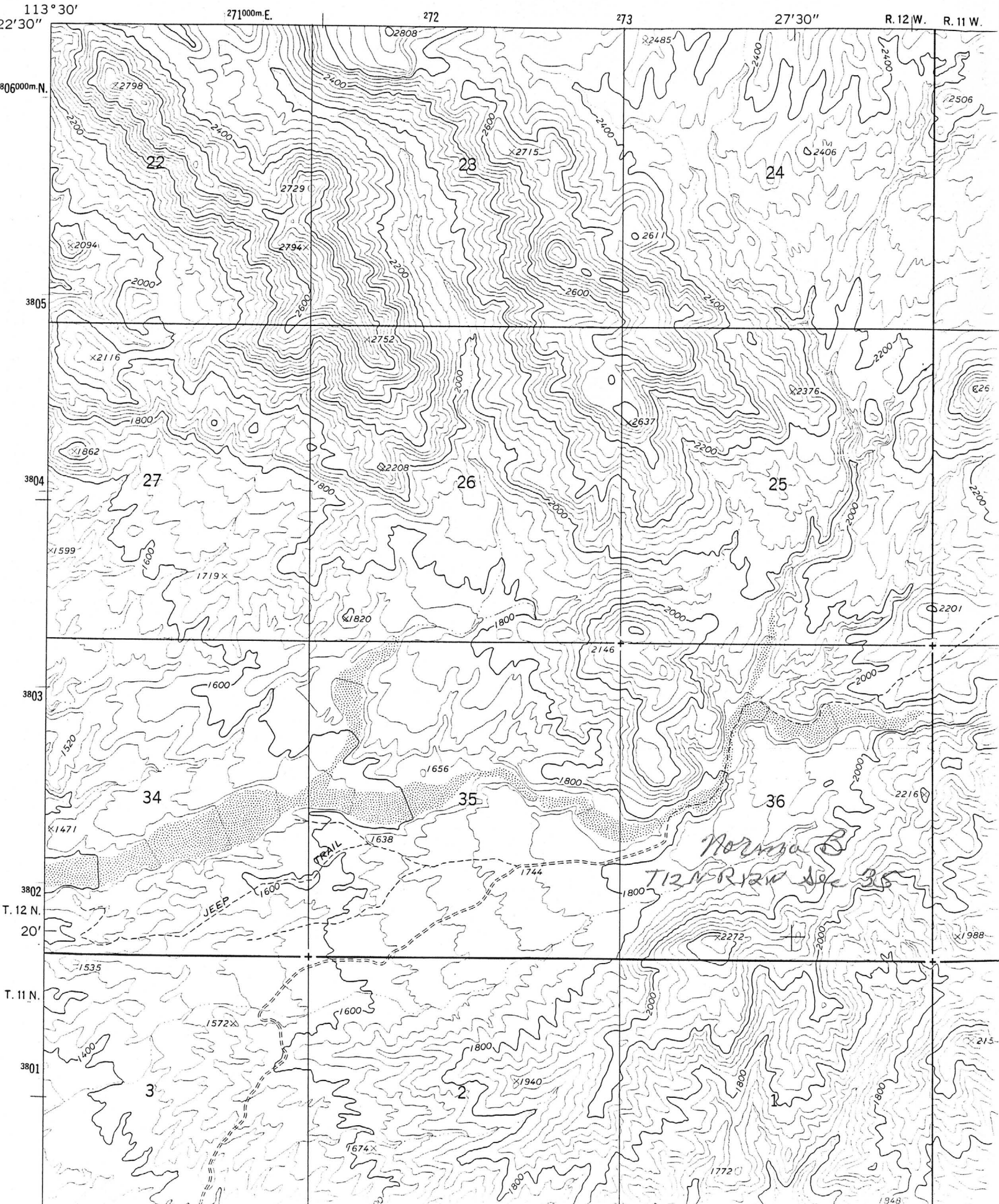
SILVER

BIBLIOGRAPHY:

ADMMR NORMA B FILE

UNITED STATES  
DEPARTMENT OF THE INTERIOR  
GEOLOGICAL SURVEY

*Palmerito Ranch 7.5*



Norma B. Mine  
sec. 35, T. 12 N., R. 12 W.  
Mohave County

reference: Arizona Dept. of Mineral Resources  
Norma B. Mine Mohave County (file)

minerals: berrite, galena, sphalerite, argentite,  
chalcocite  
present owner:

history of the area:  
in 1957 the property was owned by  
George Powers of Mesa, Arizona. The mine  
was previously owned by Sebastian E.  
Reinhart.

geology:  
the mineralization follows a vein in  
rhyolite. The vein trends N and dips  
steeply.

Norma B Mine  
sec. 35, T 12 N, R. 12 W  
Mohave County

reference: Arizona Dept. of Mineral Resources  
Norma B. Mine Mohave County (file)

minerals: barite, galena, sphalerite, argentite,  
chalcocite

present owner:

history of the area:

in 1957 the property was owned by  
George Powers of Mesa, Arizona. The mine  
was previously owned by Sebastian E.  
Reinhart.

geology:

The mineralization follows a vein in  
rhyolite. The vein trends N and dips  
steeply.

DEPARTMENT OF MINERAL RESOURCES

STATE OF ARIZONA

FIELD ENGINEERS REPORT

Mine Norma B Mine

Date December 30, 1957

District Signal Dist. Mohave Co.

Engineer Lewis A. Smith

Subject: Owners Report.

Location: Sec. 35, T 12 N, R 12 W, Next to the Antler Mine

Owner: George Powers, 1126 East 3rd Ave. Mesa Arizona

Previous Owner Sebastian E. Reinhart

Claims 2 Unpatented

Work; An old shaft (caved) and some open cuts.

Geology: The mineralization follows a vein in rhyolite. The trend is northward and the dip steep. The material from the vein contains borite with galena, sphalerite and argentite (?) or chalcocite (?). Owner will report results of assays, now in process, later.