



CONTACT INFORMATION

Mining Records Curator
Arizona Geological Survey
1520 West Adams St.
Phoenix, AZ 85007
602-771-1601
<http://www.azgs.az.gov>
inquiries@azgs.az.gov

The following file is part of the

Arizona Department of Mines and Mineral Resources Mining Collection

ACCESS STATEMENT

These digitized collections are accessible for purposes of education and research. We have indicated what we know about copyright and rights of privacy, publicity, or trademark. Due to the nature of archival collections, we are not always able to identify this information. We are eager to hear from any rights owners, so that we may obtain accurate information. Upon request, we will remove material from public view while we address a rights issue.

CONSTRAINTS STATEMENT

The Arizona Geological Survey does not claim to control all rights for all materials in its collection. These rights include, but are not limited to: copyright, privacy rights, and cultural protection rights. The User hereby assumes all responsibility for obtaining any rights to use the material in excess of "fair use."

The Survey makes no intellectual property claims to the products created by individual authors in the manuscript collections, except when the author deeded those rights to the Survey or when those authors were employed by the State of Arizona and created intellectual products as a function of their official duties. The Survey does maintain property rights to the physical and digital representations of the works.

QUALITY STATEMENT

The Arizona Geological Survey is not responsible for the accuracy of the records, information, or opinions that may be contained in the files. The Survey collects, catalogs, and archives data on mineral properties regardless of its views of the veracity or accuracy of those data.

PRINTED: 04/29/2002

ARIZONA DEPARTMENT OF MINES AND MINERAL RESOURCES AZMILS DATA

PRIMARY NAME: NORMA

ALTERNATE NAMES:

BRENTON SHAFT
SCANLON SHAFT
AFRICAN MINE

MOHAVE COUNTY MILS NUMBER: 141A

LOCATION: TOWNSHIP 27 N RANGE 20 W SECTION 13 QUARTER NW
LATITUDE: N 35DEG 43MIN 49SEC LONGITUDE: W 114DEG 22MIN 37SEC
TOPO MAP NAME: WHITE HILLS - 15 MIN

CURRENT STATUS: PAST PRODUCER

COMMODITY:

SILVER
GOLD LODE
BERYLLIUM

BIBLIOGRAPHY:

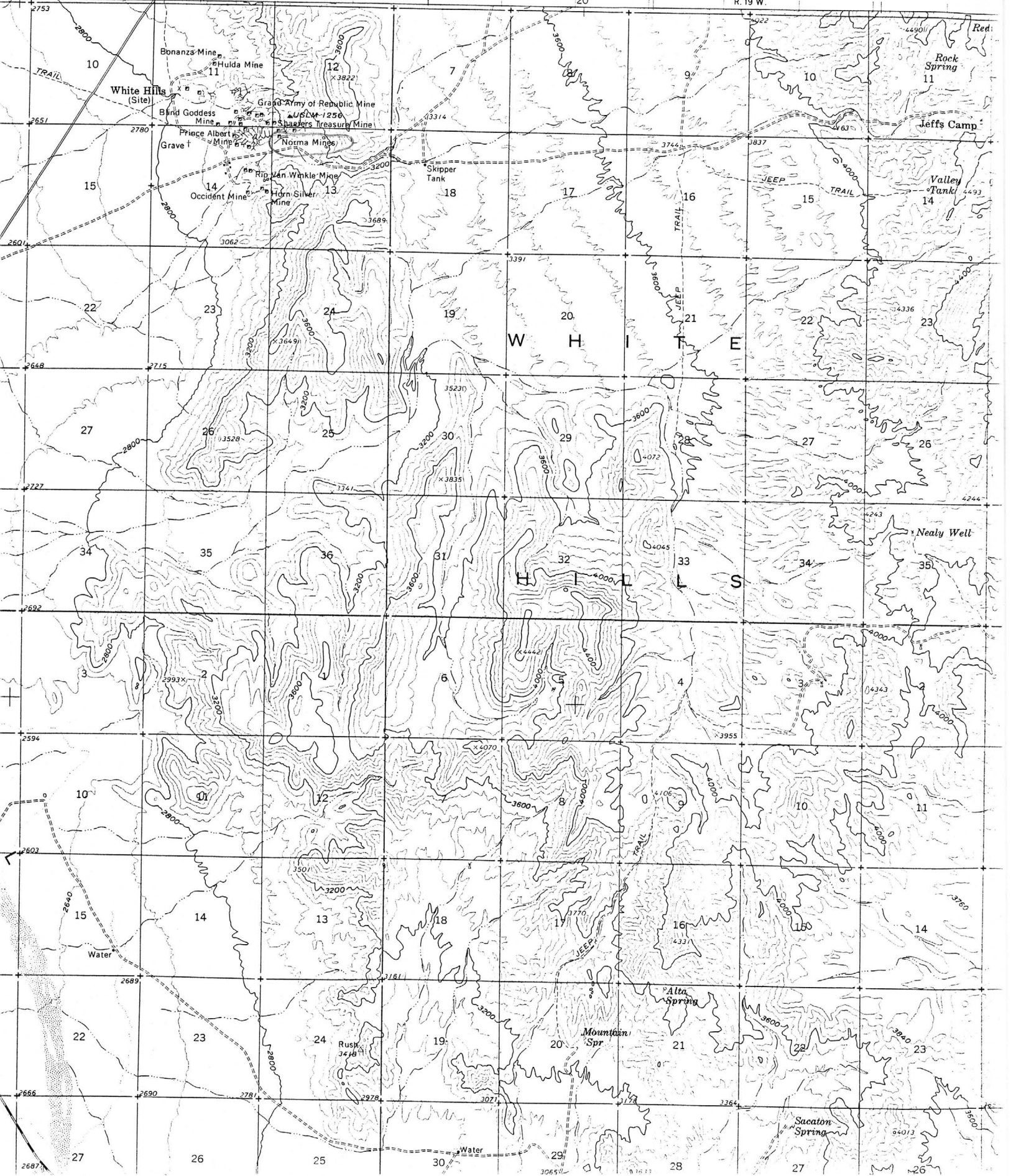
AZ. STATE LAND DEPT. MINERAL MAP
USGS KINGMAN QUAD
USGS WHITE HILLS QUAD
ADMMR MOHAVE CARD FILE
SCHRADER, F.C., USGS BULL 397, P. 132
ADMMR MOHAVE CUSTOM MILL PROJ. CARD FILE
ADMMR NORMA FILE
SEE: ADMMR WHITE HILLS FILE

25' R. 20 W.

TEMPLE BAR 22 MI. (SENATOR MTN.)

20'

R. 19 W.



SEE: White Hills (file) Mohave County

Name of Mine or Prospect:	Towns'	Range	Section	Priority
Norma Mines	27N	20W	13 bbb	C
Principal Minerals:	1:250,000 Quad		7.5' - 15' Quad	
Gold	Kingman		White Hills	
Associated Minerals:	District		Principal Product	
Silver, Quartz	White Hills		Gold	
Type of Operation:	County	State	Type of Deposit	
Underground: Shafts, Drifts, Adits	Mohave	Ar.	Vein	
Ownership or Controlling Interest: Consult current USBLM mining claim records				
Access: From Kingman, Ar. proceed north on U.S. 93 for 42 miles. Turn right on unimproved road for 3.5 miles, bear right and proceed 2 miles. Mine is located on topographic quadrangle.				
Structural Control or Geological Association: "The country rock (gneissoid granite) dips 35°N. The vein containing the deposits strikes N80°W and dips 70°N. It widens from 3 feet at the surface to 8 feet in the deeper parts of the mines. The vein contains much gouge and has crushed and altered granite incorporated." ¹				
Age of Mineralization:				
Production History			Geochemical Analyses	
References				
<ol style="list-style-type: none"> 1) Schrader (1909) p. 132. 2) CETA map file Rack #26, underground map. 3) ADMR file, Phoenix, Ar. 				

Name of Mine or Prospect: African Mine	Township 27N	Range 20W	Section 11dcd	Priority B
Principal Minerals: Gold and Silver	1:250,000 Quad Kingman		7.5' - 15' Quad White Hills	
Associated Minerals: Quartz, Calcite	District White Hills		Principal Product Gold and Silver	
Type of Operation: Underground	County Mohave	State Ar.	Type of Deposit Vein	

Ownership or Controlling Interest:
Consult current USBLM mining claim records.

Access: Take U.S. 93 north from Kingman, Ar. 42 miles, turn right on light duty road 3.5 miles road forks; take right fork and proceed 2 miles into White Hills Dist. Mine is north of Norma Mine.

Structural Control or Geological Association:

"(Mine is) located seemingly on the same vein as the Norma Mine."¹ (27N, 20W, 13bbb).
"Older Precambrian Age, Granite Gneiss"²

Age of Mineralization:

Production History	Geochemical Analyses
<p>"It (mine) is said to be but a few hundred feet in depth and not extensively worked"¹ (1909). Patented claim BK #317 MS #1256B</p>	

References

- 1) Schrader (1909) p. 132.
- 2) Wilson & Moore (1959) Geologic Map.