



CONTACT INFORMATION

Mining Records Curator
Arizona Geological Survey
1520 West Adams St.
Phoenix, AZ 85007
602-771-1601
<http://www.azgs.az.gov>
inquiries@azgs.az.gov

The following file is part of the

Arizona Department of Mines and Mineral Resources Mining Collection

ACCESS STATEMENT

These digitized collections are accessible for purposes of education and research. We have indicated what we know about copyright and rights of privacy, publicity, or trademark. Due to the nature of archival collections, we are not always able to identify this information. We are eager to hear from any rights owners, so that we may obtain accurate information. Upon request, we will remove material from public view while we address a rights issue.

CONSTRAINTS STATEMENT

The Arizona Geological Survey does not claim to control all rights for all materials in its collection. These rights include, but are not limited to: copyright, privacy rights, and cultural protection rights. The User hereby assumes all responsibility for obtaining any rights to use the material in excess of "fair use."

The Survey makes no intellectual property claims to the products created by individual authors in the manuscript collections, except when the author deeded those rights to the Survey or when those authors were employed by the State of Arizona and created intellectual products as a function of their official duties. The Survey does maintain property rights to the physical and digital representations of the works.

QUALITY STATEMENT

The Arizona Geological Survey is not responsible for the accuracy of the records, information, or opinions that may be contained in the files. The Survey collects, catalogs, and archives data on mineral properties regardless of its views of the veracity or accuracy of those data.

PRINTED: 04/30/2002

ARIZONA DEPARTMENT OF MINES AND MINERAL RESOURCES AZMILS DATA

PRIMARY NAME: NO CLOUDS 1-10

ALTERNATE NAMES:

YAVAPAI COUNTY MILS NUMBER: 1364

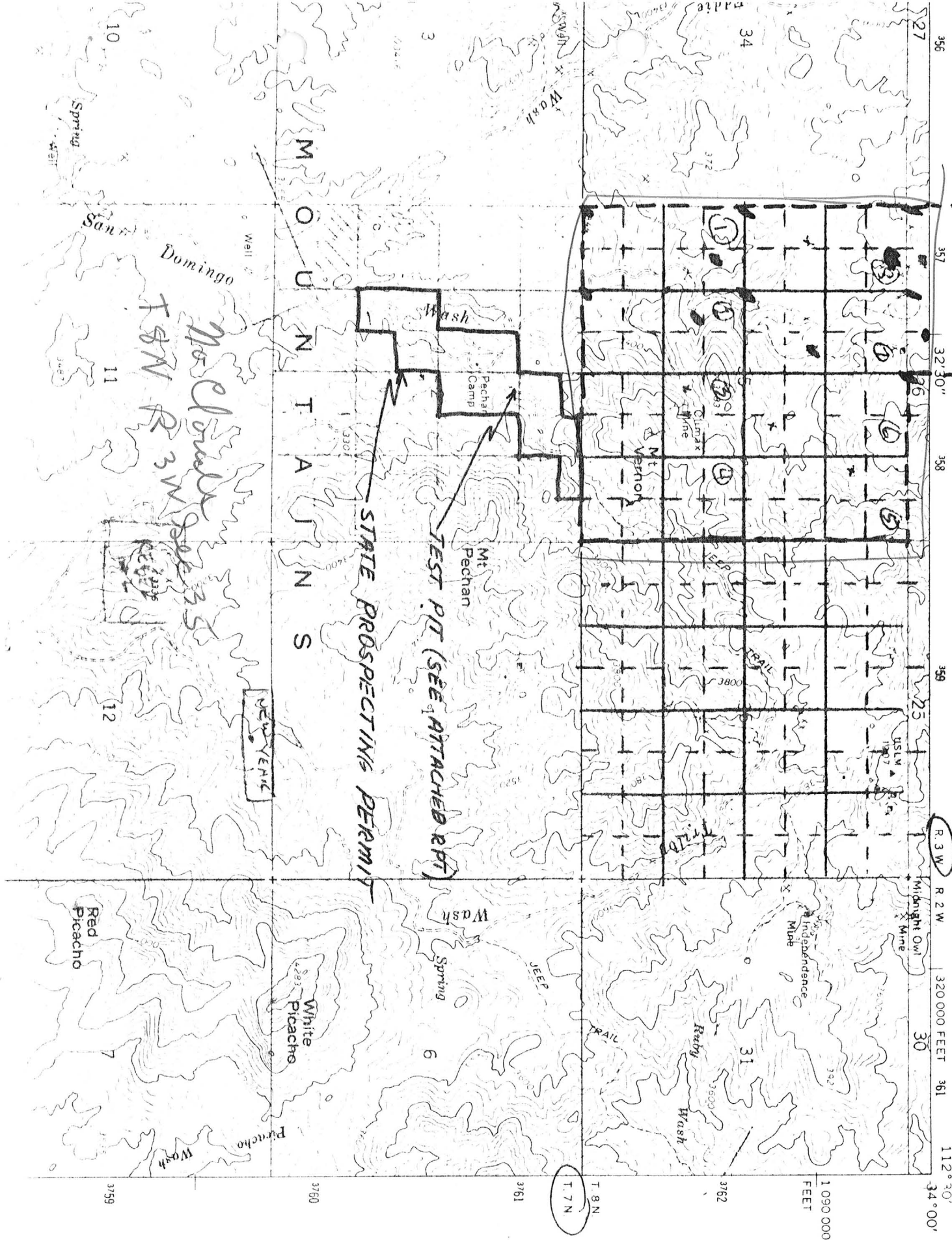
LOCATION: TOWNSHIP 8 N RANGE 3 W SECTION 35 QUARTER ALL
LATITUDE: N 33DEG 59MIN 31SEC LONGITUDE: W 112DEG 32MIN 30SEC
TOPO MAP NAME: RED PICACHO - 7.5 MIN

CURRENT STATUS: RAW PROSPECT

COMMODITY:
GOLD PLACER

BIBLIOGRAPHY:
ADMMR NO CLOUDS 1-10 FILE

ARIZONA
7.5 MINUTE SERIES (TOPOGRAPHIC)



34° 00' 34° 30' 109° 00' 109° 30'

1090 000
FEET

STATE PROSPECTING PERMIT

TEST PIT (SEE ATTACHED RPT)

McCluskey
T&N R 3 W S 3 S

NEW VENUE

Domingo

MOUNTAIN S

Red Picacho

White Picacho

Wash Spring

Mt. Pechan

Rabby Wash

Independence Mtn

Climax Mine

Mexton

Wash

Spring

10

11

12

7

34

31

327

357

327 30"

358

359

25

R 3 W

R 2 W

320 000 FEET

30

361

112° 30'

34° 00'

T 8 N
T 7 N

3759

3760

3761

3762

3763

ARIZONA DEPARTMENT OF MINES AND MINERAL RESOURCES

VERBAL INFORMATION SUMMARY

1. Information from: Larry Steirs

Company:

Address:

2. Phone:

3. Mine: NO CLOUDS 1-10

4. ADMMR Mine File: Same

5. County: Yavapai

6. Summary of information received, comments, etc.:

Larry Steirs reported John R. Nelson of Harlen Gold Corporation, 1710 Glen More Parkway, Lakewood, Colorado 80215, phone (303) 233-3375 was quite interested in their property as a gold target. Further, they had been doing some regional work in the area for some time and had approached other claim holders about exploration deals. Most prospectors wanted so much front money that the company had no interest in further discussions. Since Steirs is willing to be reasonable, he hoped some deal could be made.

Date: December 8, 1988

Ken A. Phillips, Chief Engineer

ARIZONA DEPARTMENT OF MINES AND MINERAL RESOURCES

VERBAL INFORMATION SUMMARY (SHORT FORM)

May be Reproduced

May Be Inserted Into Mine File Or Added To "Rumor Page"

1. Information from: Larry Stires

Address:

2. Phone:

3. Mine: NO CLOUDS 1-10

4. ADMMR Mine File: No Clouds

5. County: Yavapai

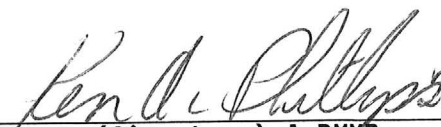
6. MILS Number: 1364

7. Operational Status: Prospects

8. Summary of information received, comments, etc.:

Mr. Stires reported he learned that Newmont's exploration geologists came onto the claims and took samples without his or any of his partners permission. I suggested that it was likely an error on their part and that he should contact them to learn about their possible interest in his claims and request the results of any samples they took.

Date: October 25, 1988



(Signature) AzDMMR

Arizona Department of Mines and Mineral Resources

VERBAL INFORMATION SUMMARY

May be Reproduced

1. Information from: David Ten Bruin and Field Visit 6/20/86
Address: 831 N. Grace Street, Scottsdale, Arizona 85257
2. Mine: No clouds 1-10 3. ADMMR Mine File
4. County: Yavapai 5. District White Picacho
6. Township 8N Range 3W Sec(s) All 35 and SW $\frac{1}{2}$ 26
7. Location: Upper mile to mile and a half of San Domingo Wash
8. No. of Claims - Patented Unpatented 10 (4 member Assoc Placer)
9. Owner (if different from above) David Ten Bruin, Larry Stures, Vince Kracum and Eugene Strickland
10. Address:
11. Operating Company:
12. Pertinent People and/or Firm: Same as owners
13. Commodities: Gold Placer
14. Operational Status: prospect
15. Summary of information received, comments, etc.:

The four owners have formed an association and located 10 association placer claims of 80 acres each.

Dave Ten Bruin and Vince Kracum report finding placer gold in numerous locations (at least one per claim, they say) by panning with hauled water.

The major washes are San Domingo, Pechan and their tributaries. The washes are typically dry. The gradient is over 250 feet per mile and gravels are relatively thin. There are occasional bedrock exposures in the major washes. Bed work exposures in side washes are common.

The claimants plan a small placer sampling program and hope to either find a rich spot to work themselves or to do sufficient work to indicate a commercial target.

Date: June 20, 1986

Kent Phillips
(Signature)

ADMMR

KAP WR 6/2/86: In the company of David Ten Bruin and Vice Kracum a visit was made to their No Clouds 1-10 placer claims in the White Picacho District, Yavapai County. Their activities and the property are described in a separate report.

KAP WR 1/9/87: Larry Stiers called about his No Clouds 1-10 (file), property in Yavapai County. He is trying to find a way to sell recreational gold prospecting rights to subdivided parts of his claims. I suggested that such a plan has numerous legal obstacles and suggested that he talk to both an attorney and to the BLM minerals managers.

KAP WR 9/4/87: Larry Stiers brought in a 50 pound sample of fractured copper stained rock from his No Clouds 1-10 Claims (file) Yavapai County. He hoped the sample was good enough to sell as specimen material. It was too highly fractured.

KAP WR 12/18/87: Larry Stiers called regarding details of amalgamation. He has produced a couple of 50 pound lots of placer concentrates from gravels in Pecham Wash on his group's No Clouds (file) Yavapai County. He reported he has removed between 10 and 20 penny weight of free gold from each sample and wants to determine how much more can be recovered by amalgamation.

KAP WR 1/8/88: Larry Stiers called to review his tests of Bio-D Leachant on some placer concentrates from gravels processed from Pecham Wash on his group's No Clouds Claims (file) Yavapai County. Unfortunately insufficient data to determine metallurgical balance makes any data he has developed meaningless. Suggested he at least assay the "pregnat solution before trying to determine why he can't plate gold out of the solution.

KAP WR 3/18/88: Discussed production of copper cement from acid soluble copper bearing ores with Larry Stiers. He hopes to find a way to produce small amounts of salable materials from his No Clouds Claims (file) Yavapai County. Demonstrated the principle of precipitating copper from acid solutions using iron.
