



CONTACT INFORMATION

Mining Records Curator
Arizona Geological Survey
1520 West Adams St.
Phoenix, AZ 85007
602-771-1601
<http://www.azgs.az.gov>
inquiries@azgs.az.gov

The following file is part of the

Arizona Department of Mines and Mineral Resources Mining Collection

ACCESS STATEMENT

These digitized collections are accessible for purposes of education and research. We have indicated what we know about copyright and rights of privacy, publicity, or trademark. Due to the nature of archival collections, we are not always able to identify this information. We are eager to hear from any rights owners, so that we may obtain accurate information. Upon request, we will remove material from public view while we address a rights issue.

CONSTRAINTS STATEMENT

The Arizona Geological Survey does not claim to control all rights for all materials in its collection. These rights include, but are not limited to: copyright, privacy rights, and cultural protection rights. The User hereby assumes all responsibility for obtaining any rights to use the material in excess of "fair use."

The Survey makes no intellectual property claims to the products created by individual authors in the manuscript collections, except when the author deeded those rights to the Survey or when those authors were employed by the State of Arizona and created intellectual products as a function of their official duties. The Survey does maintain property rights to the physical and digital representations of the works.

QUALITY STATEMENT

The Arizona Geological Survey is not responsible for the accuracy of the records, information, or opinions that may be contained in the files. The Survey collects, catalogs, and archives data on mineral properties regardless of its views of the veracity or accuracy of those data.

06/12/96

ARIZONA DEPARTMENT OF MINES AND MINERAL RESOURCES FILE DATA

PRIMARY NAME: NEW ENGLAND-AZ GOLD COPPER PRO

ALTERNATE NAMES:

PATENTED CLAIMS MS 2279
ELDORADO, READ STAR, SMUGLER

YAVAPAI COUNTY MILS NUMBER: 704A

LOCATION: TOWNSHIP 13 N RANGE 1 E SECTION 8 QUARTER SW
LATITUDE: N 34DEG 31MIN 01SEC LONGITUDE: W 112DEG 17MIN 25SEC
TOPO MAP NAME: PRESCOTT VALLEY S - 7.5 MIN

CURRENT STATUS: PAST PRODUCER

COMMODITY:

COPPER
GOLD
SILVER

BIBLIOGRAPHY:

USGS PRESCOTT VALLEY SO. QUAD
BLM MINING DISTRICT SHEET 17
ADMMR ELDORADO, READ STAR FILE
WEED, H.W. MINES HANDBOOK 1906 VOL 6 P 744
CLAIMS EXTEND INTO SEC. 7, 8, 17 & 18

NEW ENGLAND - ARIZONA GOLD AND COPPER MINING CO.

The following information is from the most reliable data available.

COPPER HANDBOOK (WEED & STEVENS) Vol. 7 1907 (Stevens)

Main Office, 69 Pearl Street, Boston, Mass., former office McCabe, Arizona.

President: Edmund D. Fiske, Vice President: Leonard T. Farris, Secretary and Treasurer: Louis Harlow. Organization under laws of Arizona, January 19, 1901

Capital: \$750,000. Par Value: \$1.00 per share.

Property consisted of 5 claims in Red Star Group and Calumet Group in Big Bug Mining District of Yavapai County, Arizona near the Silver Belt Mine about 4 miles north of McCabe and about 2 miles northwest of Humbolt Smelter. Possibly reorganized in 1906-07 and merged with Verde River Copper Company, Cherry, Arizona.

COPPER HANDBOOK (STEVENS) 1908

President: George A. Whitney Vice President: Frank Harlow Secretary-Treasurer: L. Harlow General Superintendent: John H. Farrell.

Work consists of a short tunnels, cuts, pits and two compartment shaft 325 feet deep. Two parallel veins about 31 feet apart shown on the property disclosing pay streaks up to 2 feet in width, with an average of 10% copper tenor.

COPPER HANDBOOK (STEVENS) 1909

Same officers. Directors: J. J. Bernie, W. R. Lambert, A. H. Smith, A. M. Ireland, F. J. Rolfe, Fred C. Bidwell and E. P. Libby.

Equipment, Steam power and several buildings.

COPPER HANDBOOK (WEED) 1912-13

Idle. Last known president, George A. Wooden.

Three patented claims, Red Star, Eldorado and Smuggler (pat'd 1906).

Two compartment shaft, 600 feet deep, power house, 70 HP boiler, 35 HP hoist, small air compressor and several buildings. Mine shut down many years. The ore carried 10% copper with gold and silver values.

THE COPPER HANDBOOK

by Walter Harvey Weed E. M.

Geologist in the U. S. Geological Survey

New England and Arizona Gold and Copper Mining Company, Arizona. Idle. Letters to 250 Devonshire St., Boston, Mass and Humboldt, Yavapai County Arizona unanswered.

George A. Wooden, president; Louis Harlow, treasurer; John H. Farrell, superintendent at last accounts. Organized January 19, 1901 under laws of Arizona. Capitalization, \$750,000. Shares \$1.00 par.

Lands. 6 claims 3 patented, 120 acres including The Red Star Group and Calumet Group near McCabe, Arizona. The property is said to show 2 parallel veins 30' apart having pay streaks of 2" width carrying ore assaying about 10% copper with gold and silver values. The mine has a 600' two compartment main shaft, a power house with a 70 HP boiler, 35 HP hoist and a small air compressor. Mine shut down many years.

Copyright 1914

by

Walter Harvey Weed

Mining World Press

Printers, Publishers, Binders

Monadnock Block, Chicago

NEW ENGLAND - ARIZONA GOLD AND COPPER MINING CO.

The following information is from the most reliable data available.

COPPER HANDBOOK(WEED&STEVENS) Vol. 7 . 1907 (Stevens)
Main office, 69 Pearl St., Boston, Masss., former office McCabe, Ariz.
Pres . Edmund D. Fiske Vice Pres. Leonard T. Farris Sect. & Treas.
Louis Harlow . Organized under laws of Ariz. Jan. 19, 1901.
Capt. \$750,000 , par value \$1.00 per share.
Property consisted of 5 claims in Red Star Group and Calumet Group
in Big Bug Mining Dist. of Yavapai County, Ariz., near The Silver Belt
mine , about 4 miles North of McCabe, and about 2 miles North-west of
Humbolt Smelter. Possibly reorganized in 1906-07 and merged with Verde
River Copper Co., Cherry, Ariz .

COPPER HANDBOOK(STEVENS) 1908
Pres. George A. Whitney. Vice Pres. Frank Harlow. Sect. Treas. L. Harlow.
Gen. Supt. John H. Farrell.
Work consists of short tinnells, cuts, pits and a two compartment shaft
325 feet deep. Two partell veins about 31 feet apart shown on the pro-
perty disclosing pay streaks up to 2 feet in width, with an average of
10% copper tenor.

COPPER HANDBOOK (STEVENS) 1909
Same officers. Directors: J. J. Bernie, W. R. Lambert, A. H. Smith, A. M. Ireland,
F. J. Rolfe, Fred C. Bidwell and E. P. Libby.
Equipment, Steam power and several buildings.

COPPER HANDBOOK(WEED) 1912-13.
Idle. Last known Pres., George A. Wooden.
Three patented claims, Red Star, Eldorado and Smuggler(pat'd 1906)
Two compartment shaft, 600 feet deep., power house, 70HP boiler, 35HP hoist,
Small air compressor and several buildings. Mine shut down many years.
The ore carried 10% copper with gold and silver values..

New England-Arizona Gold and Copper Mining Co.

These data are from various volumes of
Copper Handbook - by Stevens and Keed.

Vol. 7 - 1907. Stevens.

1907 Main office - 69 Pearl St. Boston, Mass.

former " - Mc Cabe, Arizona.

President - Edmund D. Fiske

Vice-pres. Leonard T. Farris - Sec. Treas. Lewis Harlow.

Organized under laws of Ariz. Jan. 19, 1901.

Capitalization - 750,000 - par value 100 per share.

Land - 5 claims in Red Star group and Calumet group
in Big Bug Mining Dist. of Yavapai County, Ariz.

near Silver Belt Mine - ca. 4 miles north of
Mc Cabe, Ariz. and 2 miles - - from Humboldt

Smelter. Possibly reorganized in 1906-07 and
merged with Verde River Copper Co., Cherry, Ariz.

1908 Stevens.

Pres. Geo. A. Whitney - Vice Pres. Frank Harlow

Sec. Treas. L. Harlow - Gen. Supt. John H. Farrell

Work - short tunnels, cuts, pits and a two com-
partment shaft 325' deep. Two parallel veins

about 31' apart show on the property disclosing
"pay streaks up to 2' in width, with an average
of 10% copper tenor."

1909. Stevens.

Same officers. - Director: - J. J. Bernie, W. R. Lambert,
A. H. Smith, A. M. Ireland, F. J. Rolfe, Fred C. Bidwell and
E. P. Libby. - Steam power and several buildings.

1912-13. Keed.

Idle. Last known Pres. Geo. A. Hodder.

3 patented claims - 10% copper with gold and silver values.
600' shaft, 2 comp. power house, 70 h. p. boiler, 35 h. p.
hoist, small air compressor and several buildings.
Mine shutdown many years.

Note. - Inquire about Silver Belt Cons. Mining Co. near
Humboldt, Ariz. organized 1916 - still active in 1920.

The Copper Handbook

Report -
Page 648
11

By
Walter Harvey Wood E.M.

Geologist - in the U.S. Geological Survey

New England & Arizona Gold & Copper M. & C. Arizona

Ind. Letters 2-250 Devonshire St. Boston Mass. and

Humboldt. Yavapai Co. Ariz. unassumed. Geo.

A. Woodcock Pres; Louis H. Hallow, Treas; John H. Fannell,

Supt; at last accounts. Organized Jan. 19, 1901

under laws of Arizona Capitalization 750,000

Shares \$1 per.

lands. 6 Claims 3 patented. 120 acres including

The Red Star group. and Columet groups near

M^o Ceb. Ariz. The property is said to show 2

parallel veins 30' apart having thickness of 2"

width carrying ore assaying about 10% copper

with gold and silver values. The mine has a

600' two compartment - main shaft - a power

house with a 70-h.p. boiler, 35-h.p. hoist - and

a small air compressor. Mine shut down

many years.

Copyright - 1914

By
Walter Harvey Wood

Mining World Press

Printed: Publishers: Binders

Maradnock Block, Chicago

DEPARTMENT OF MINERAL RESOURCES
STATE OF ARIZONA
MINE OWNER'S REPORT

1. Mine *Eldorado Road Star*
2. Location *1 1/2 miles W of
Iron King*
3. Mining District & County *Big Bug
Yavapai Co*
4. Former name *New England*
5. Owner *T.J. Stroed*
6. Address (Owner) *PO Box
2147 Phoenix*
7. Operator
8. Address (Operator)
9. President, Owning Co.
- 9A. President, Operating Co.
10. Gen. Mgr.
14. Principal Minerals *Au Ag Cu Pb*
11. Mine Supt.
15. Production Rate *none*
12. Mill Supt.
16. Mill: Type & Cap.
13. Men Employed
17. Power: Amt. & Type
18. Operations: Present
Expanding
19. Operations: Planned
20. Number Claims, Title, etc.
21. Description: Topography & Geography
22. Mine Workings: Amt. & Condition *650 foot Shaft,*

23. Geology & Mineralization

24. Ore: Positive & Probable, Ore Dumps, Tailings

24A. Dimensions and Value of Ore body

25. Mine, Mill Equipment & Flow-Sheet

26. Road Conditions, Route

27. Water Supply

28. Brief History

29. Special Problems, Reports Filed

30. Remarks

31. If property for sale: Price, terms and address to negotiate.

32. Signature.....*T J Wood*.....

33. Use additional sheets if necessary.

DEPARTMENT OF MINERAL RESOURCES
STATE OF ARIZONA
OWNERS MINE REPORT

Date 1943

1. Mine ELDORADO, READ STAR
2. Mining District & County Big Bug
Yavapai County
3. Former name New England
4. Location 1 1/2 miles W. of Iron King
5. Owner T. J. Stroud
6. Address (Owner) P. O. Box 2147
Phoenix, Arizona
7. Operator
8. Address (Operator)
9. President
10. Gen. Mgr.
11. Mine Supt.
12. Mill Supt.
13. Principal Metals Au, Ag, Cu, Pb
14. Men Employed
15. Production Rate None
16. Mill: Type & Cap.
17. Power: Amt. & Type
18. Operations: Present
Exploring
19. Operations Planned
20. Number Claims, Title, etc.
21. Description: Topography & Geography
22. Mine Workings: Amt. & Condition 650 Foot Shaft

23. **Geology & Mineralization**

24. **Ore: Positive & Probable, Ore Dumps, Tailings**

24-A **Vein Width, Length, Value, etc.**

25. **Mine, Mill Equipment & Flow Sheet**

26. **Road Conditions, Route**

27. **Water Supply**

28. **Brief History**

29. **Special Problems, Reports Filed**

30. **Remarks**

31. **If property for sale: Price, terms and address to negotiate.**

32. **Signed.....**

33. **Use additional sheets if necessary.**

NEW ENGLAND - ARIZONA GOLD AND COPPER MINING CO.

The following information is from the most reliable data available.

COPPER HANDBOOK (WEED & STEVENS) Vol. 7 1907 (Stevens)

Main Office, 69 Pearl Street, Boston, Mass., former office McCabe, Arizona.

President: Edmund D. Fiske, Vice President: Leonard T. Farris, Secretary and

Treasurer: Louis Harlow. Organization under laws of Arizona, January 19, 1901

Capital: \$750,000. Par Value: \$1.00 per share.

Property consisted of 5 claims in Red Star Group and Calumet Group in Big Bug Mining District of Yavapai County, Arizona near the Silver Belt Mine about 4 miles north of McCabe and about 2 miles northwest of Humbolt Smelter. Possibly reorganized in 1906-07 and merged with Verde River Copper Company, Cherry, Arizona.

COPPER HANDBOOK (STEVENS) 1908

President: George A. Whitney Vice President: Frank Harlow Secretary-Treasurer:

L. Harlow General Superintendent: John H. Farrell.

Work consists of a short tunnels, cuts, pits and two compartment shaft 325 feet deep. Two parallel veins about 31 feet apart shown on the property disclosing pay streaks up to 2 feet in width, with an average of 10% copper tenor.

COPPER HANDBOOK (STEVENS) 1909

Same officers. Directors: J. J. Bernie, W. R. Lambert, A. H. Smith, A. M. Ireland, F. J. Rolfe, Fred C. Bidwell and E. P. Libby.

Equipment, Steam power and several buildings.

COPPER HANDBOOK (WEED) 1912-13

Idle. Last known president, George A. Wooden.

Three patented claims, Red Star, Eldorado and Smuggler (pat'd 1906).

Two compartment shaft, 600 feet deep, power house, 70 HP boiler, 35 HP hoist, small air compressor and several buildings. Mine shut down many years. The ore carried 10% copper with gold and silver values.

THE COPPER HANDBOOK

by Walter Harvey Weed E. M.
Geologist in the U. S. Geological Survey

New England and Arizona Gold and Copper Mining Company, Arizona. Idle. Letters to 250 Devonshire St., Boston, Mass and Humboldt, Yavapai County Arizona unanswered.

George A. Wooden, president; Louis Harlow, treasurer; John H. Farrell, superintendent at last accounts. Organized January 19, 1901 under laws of Arizona. Capitalization, \$750,000. Shares \$1.00 par.

Lands. 6 claims 3 patented, 120 acres including The Red Star Group and Calumet Group near McCabe, Arizona. The property is said to show 2 parallel veins 30' apart having pay streaks of 2" width carrying ore assaying about 10% copper with gold and silver values. The mine has a 600' two compartment main shaft, a power house with a 70 HP boiler, 35 HP hoist and a small air compressor. Mine shut down many years.

Copyright 1914

by

Walter Harvey Weed

Mining World Press

Printers, Publishers, Binders

Monadnock Block, Chicago

ARIZONA DEPARTMENT OF MINERAL RESOURCES
MINERAL BUILDING, FAIRGROUNDS
PHOENIX, ARIZONA

~~December 10,~~ 1957

February 13, 1958

To the Owner or Operator of the Arizona Mining Property named below:

ELDORADO READ STAR
(Property)

GOLD SILVER COPPER LEAD
(ore)

We have an old listing of the above property which we would like to have brought up to date.

Please fill out the enclosed Mine Owner's Report form with as complete detail as possible and attach copies of reports, maps, assay returns, shipment returns or other data which you have not sent us before and which might interest a prospective buyer in looking at the property.

FRANK P. KNIGHT,
Director.

Enc: Mine Owner's Report

BOARD OF GOVERNORS:
CHARLES F. WILLIS, PHOENIX
CHAIRMAN
DR. N. H. MORRISON, PHOENIX
VICE-CHAIRMAN
SHELTON G. DOWELL, DOUGLAS
L. V. ROOT, KINGMAN
LOYDE C. EDMONSON, GLOBE

W. J. GRAHAM, SECRETARY

DEPARTMENT OF MINERAL RESOURCES
STATE OF ARIZONA
413 HOME BUILDERS BLDG.
PHOENIX, ARIZONA



J. S. COUPAL, PHOENIX
DIRECTOR
W. C. BROADGATE, PHOENIX
EARL F. HASTINGS, PHOENIX
ASSISTANT DIRECTORS
W. J. GRAHAM, PHOENIX
ASSISTANT TO THE DIRECTORS
FIELD OFFICES AT
GLOBE - KINGMAN
PRESCOTT - TUCSON

REPLY TO


November 8, 1943

Mr. T. J. Stroud
P. O. Box 2147
Phoenix, Arizona

Dear Mr. Stroud:

We have a mine owners report on the Eldorado, Red Star property, $1\frac{1}{2}$ miles west of Iron King which is very incomplete. I am enclosing a blank mine owners report form and would appreciate it if you would read the "Instructions for Filling Out Report" and give us as much information as you can on the property.

Very truly yours,


J. S. Coupal
Director

JSC:JES

SHATTUCK DENN MINING CORPORATION

and

SUBSIDIARIES

Humboldt

Office

Date..... November 27, 1935

TO: C. R. Sundeen

SUBJECT: ELDORADO MINING CLAIM

FROM: J. Olaf Sund

% Mrs. G. M. Williams
2633 E. Kelton Lane
Phoenix, Arizona 85032
Phone 942-1998

TYPE: Gold

LOCATION:

Three patented mining claims called the "Smuggler", "Red Star" and the "Eldorado" are apparently located in sections 7, 8, 17 and 18, T-13N, R-1-E. The only claim of concern herein is the Eldorado, which is located in section 17 and is approximately 2.3 miles west from the town of Humboldt.

TERMS REQUESTED:

Not indicated in the various letters requesting that an examination be made by the staff of the Iron King Mine. Co-owners include the families Roche, Williams, and Morrow.

GEOLOGICAL:

Mineralogical activities were carried out on the Eldorado claims a number of years ago. There is an old shaft measured in excess of 75 feet deep as well as a number of shallow pits and shafts in the surrounding area.

The above work is all within a granodiorite or quartz-diorite sill that strikes approximately north 45 degrees east. It is generally a reddish colour, medium and medium grained with occasional sheared zones that approximately parallel the sill itself at north 45 to 50 degrees east and dips at 65 to 70 degrees east. Such zones rarely exceed 3 to 4 feet and are characterized by some brecciation, some carbonate and limonite alteration but with only scant mineralization. Apparently some glassy quartz veins are emplaced along these sheared zones in places. These veins may carry sulphides that include pyrite, chalcopyrite and arsenopyrite. However, no veins were found in place. A pile of quartz on the mine dump and obviously sorted was the only such material located.

The shaft is located near to a parallel sill of a fine-grained, dark and massive gabbro or diorite intrusive on the south-east side of the granodiorite.

Within the granodiorite are a variety of inclusions. These include what might be altered intermediate volcanics as well as frequent bands about one to two feet across of very finely banded or bedded reddish siliceous rock. The latter are all locally oriented parallel to the occasional shearing.

Anderson of the U.S.G.S. has noted such bands as jasper lenses, pods and veins.

No significant mineralization is associated with these latter quartzose units.

SAMPLES:

The quartz on the mine dump etc. was sampled with the following results, which are grouped according to sulphide variations. Note that the arsenopyrite increases in the samples down the list.

<u>Sample No.</u>	<u>Material</u>	<u>Gold</u>	<u>Silver</u>
11703	Breccia zone-rusty	Tr	0.2
11704	Breccia zone	Tr	Tr
11705	Barren quartz (glassy & massive)	Tr	Nil
11706	Glassy & massive quartz w/arseno streak	.04	Tr
11707	Glassy quartz w/minor arseno strk.	.05	Tr
11708	Barren quartz	Tr	Tr
11709	Barren quartz w/hematite veinlets	.02	Tr
11710	Barren quartz	Tr	Tr
11711	Barren Quartz with dark parts	Tr	Tr
11716	Quartz w/moderate pyrite only	.03	0.3
11715	Quartz w/little pyrite & rust	.08	Tr
11722	Quartz w/pyrite, chalco & rust	.08	Tr
11714	Quartz w/pyrite only	.18	Tr
11721	Quartz w/mainly pyrite & rust	.18	Tr
11712	Rusty quartz w/pyrite & little arseno	.22	0.1
11713	Quartz w/pyrite & moderate arseno	.66	0.7
11720	Quartz w/pyrite, arseno & tourmaline	.63	Tr
11717	Quartz w/heavy pyrite only	.77	0.6
11719	Quartz w/pyrite, chalco & malachite	.88	Tr
11718	Quartz w/heavy arsenopyrite	1.02	Tr

CONCLUSIONS & RECOMMENDATIONS:

It is immediately evident from the assays that the relative amount of gold increases in direct proportion to the relative increase in the amount of arsenopyrite. Thus the gold in this prospect is carried by arsenopyrite in a quartz vein.

It must be noted that the same or similar quartz vein was not actually seen in place. Hence one must ask what prompted the sinking of the original shaft. Also how much vein material is present in whatever the structure involved and similarly how frequent is the arsenopyrite mineralization. Note that probably one-half of the sorted quartz on the mine dump is nearly barren.

In view of the fact that this is patented ground perhaps the present owners have a record of the original mining and past production or at least access to it.

No vein material was actually seen in place, and considering the difficult economics of gold mining at the present date, it would appear that at this point there is little justification to proceed with any deal on this ground unless some new information was received. If Mrs. Williams was so advised, it could be expected that she or her partners would find or produce this information if it were available.

May 27, 1957

ELDORADO & READ STAR
Formerly "NEW ENGLAND"

YAVAPAI COUNTY

No information on this property.

MARK GEMMILL



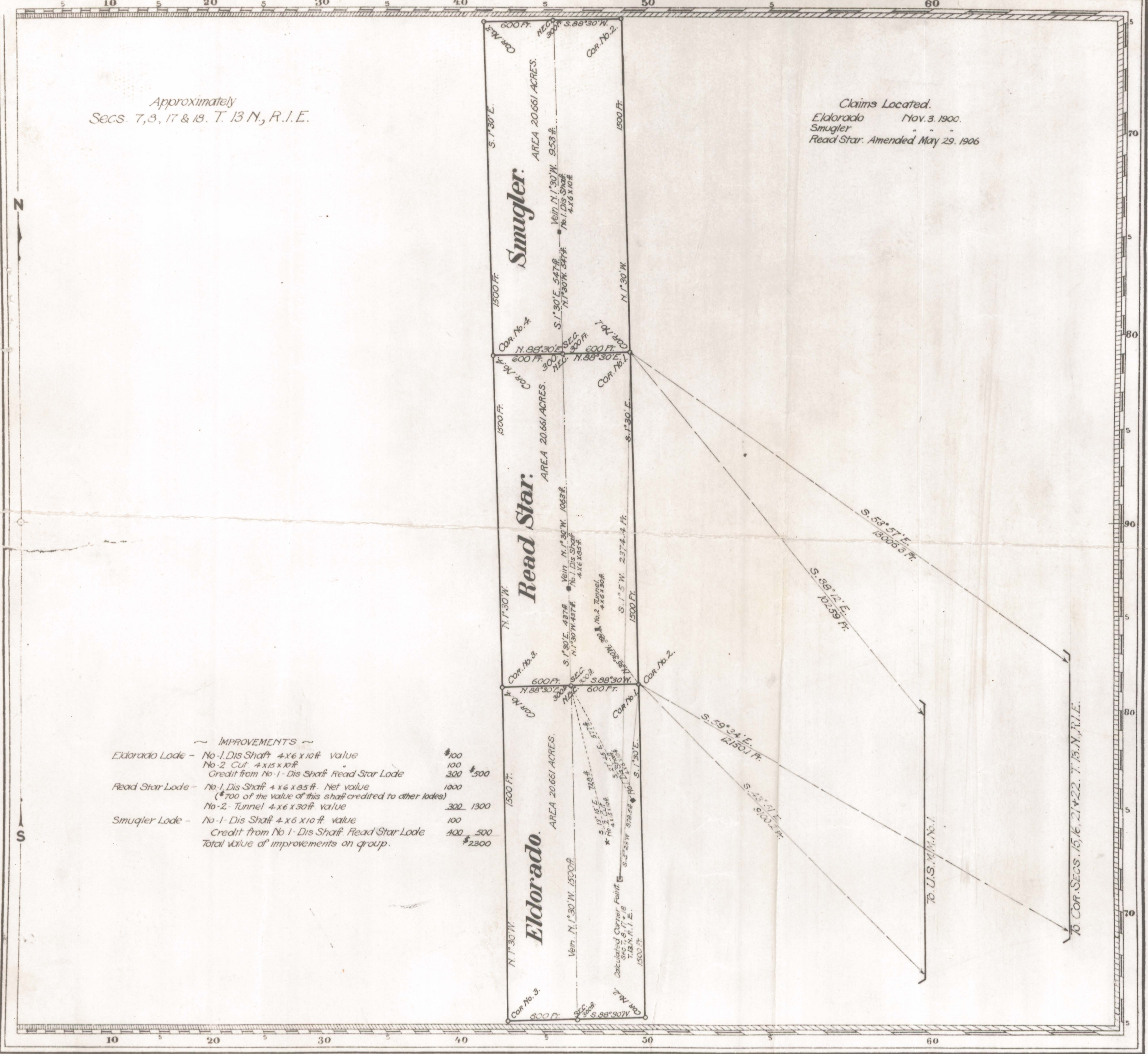
Mr. T. J. Stroud
P. O. Box 2147
Phoenix, Arizona

Not in Main Office Box Director,

2

Approximately
SECS. 7, 8, 17 & 18, T. 13 N., R. 1 E.

Claims Located.
Eldorado Nov. 3, 1900.
Smugler
Read Star. Amended May 29, 1906



IMPROVEMENTS

Eldorado Lode - No. 1, Dis Shaft 4x6 x 10 ft. value	\$100
No. 2 Cut 4x15 x 10 ft.	100
Credit from No. 1 - Dis Shaft, Read Star Lode	300
Read Star Lode - No. 1, Dis Shaft 4x6 x 8.5 ft. Net value	1000
(*700 of the value of this shaft credited to other lodes)	
No. 2 - Tunnel 4x6 x 30 ft. value	300
Smugler Lode - No. 1 - Dis Shaft 4x6 x 10 ft. value	100
Credit from No. 1 - Dis Shaft, Read Star Lode	400
Total value of improvements on group.	\$2300

Mineral Survey No. 2279.
Arizona Lot No. Land District.

PLAT
OF THE CLAIM OF
The New England and Arizona Gold & Copper Mining Company.
KNOWN AS THE
Eldorado, Read Star and Smugler.

IN BIG BUG MINING DISTRICT,
YAVAPAI COUNTY, ARIZONA
Containing an Area of 61,983. Acres.
Scale of 400 Feet to the inch.
Variation 14° 30' E.

SURVEYED June 4-6 1906 BY
J.J. Fisher U.S. Deputy Mineral Surveyor.

The Original Field Notes of the Survey of the Mining Claim of
The New England and Arizona Gold & Copper Mining Company
known as the
Eldorado, Read Star and Smugler.

from which this plat has been made under my direction, have been examined and approved, and are on file in this Office; and I hereby certify that they furnish such an accurate description of said Mining Claim as will, if incorporated into a patent, serve fully to identify the premises, and that such reference is made therein to natural objects or permanent monuments as will perpetuate and fix the locus thereof.
I further certify that Five Hundred Dollars worth of labor has been expended or improvements made upon said Mining Claims by claimant or its grantors, and that said improvements consist of
See Table

that the location of said improvements is correctly shown upon this plat, and that no portion of said labor or improvements has been included in the estimate of expenditures upon any other claim.
And I further certify that this is a correct plat of said Mining Claim made in conformity with said original field notes of the survey thereof, and the same is hereby approved.

U.S. Surveyor General's Office. *Frank S. Ingalls*
PHOENIX ARIZONA. U.S. Surveyor General for
SEPT. 20, 1906 ARIZONA.