



CONTACT INFORMATION

Mining Records Curator
Arizona Geological Survey
1520 West Adams St.
Phoenix, AZ 85007
602-771-1601
<http://www.azgs.az.gov>
inquiries@azgs.az.gov

The following file is part of the

Arizona Department of Mines and Mineral Resources Mining Collection

ACCESS STATEMENT

These digitized collections are accessible for purposes of education and research. We have indicated what we know about copyright and rights of privacy, publicity, or trademark. Due to the nature of archival collections, we are not always able to identify this information. We are eager to hear from any rights owners, so that we may obtain accurate information. Upon request, we will remove material from public view while we address a rights issue.

CONSTRAINTS STATEMENT

The Arizona Geological Survey does not claim to control all rights for all materials in its collection. These rights include, but are not limited to: copyright, privacy rights, and cultural protection rights. The User hereby assumes all responsibility for obtaining any rights to use the material in excess of "fair use."

The Survey makes no intellectual property claims to the products created by individual authors in the manuscript collections, except when the author deeded those rights to the Survey or when those authors were employed by the State of Arizona and created intellectual products as a function of their official duties. The Survey does maintain property rights to the physical and digital representations of the works.

QUALITY STATEMENT

The Arizona Geological Survey is not responsible for the accuracy of the records, information, or opinions that may be contained in the files. The Survey collects, catalogs, and archives data on mineral properties regardless of its views of the veracity or accuracy of those data.

PRINTED: 03/14/2003

ARIZONA DEPARTMENT OF MINES AND MINERAL RESOURCES AZMILS DATA

PRIMARY NAME: NELSON PLACERS

ALTERNATE NAMES:

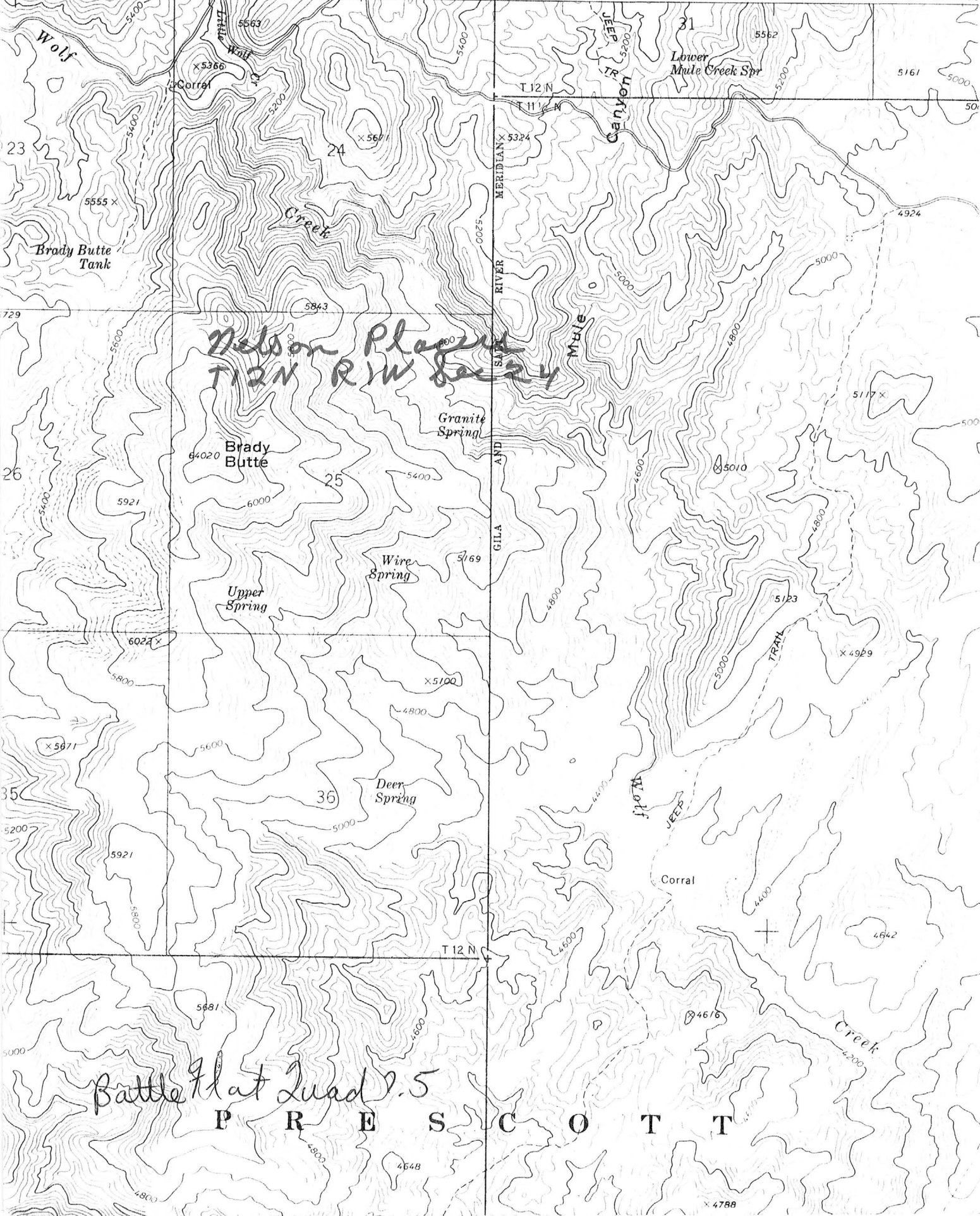
YAVAPAI COUNTY MILS NUMBER: 1106

LOCATION: TOWNSHIP 12 N RANGE 1 W SECTION 24 QUARTER S2
LATITUDE: N 34DEG 21MIN 56SEC LONGITUDE: W 112DEG 19MIN 02SEC
TOPO MAP NAME: BATTLE FLAT - 7.5 MIN

CURRENT STATUS: EXP PROSPECT

COMMODITY:
GOLD PLACER

BIBLIOGRAPHY:
BLM AMC FILE
PLACERS FOLLOWED WOLF CREEK IN SEC. 14, 23 &
25
ADMMR NELSON PLACERS FILE



INSPIRATION, ARIZONA 85537

D.F.R.
Activities
Rec. Tech
Resource
Rnge Tech
F.C.O.
Prog. Tech
T.M.O.
Dist. Clerk
Asst. Clerk

RE: Notice of Intent to Operate
Fox Claim Group

Enc.

B B BUG MESA

at Spr

30

31

32
CHALK
CLAINS

30
CHALK
CLAINS

31
CHALK
CLAINS

andve
branch

P. 14

White H.

NELSON PLACERS

7/84

YAVAPAI COUNTY
T12N R1W Sec 24 S $\frac{1}{2}$

MILS Yavapai Index # 1106

USGS Battle Flat topo map (Included in file)

AKA: Fox Claim Group