



CONTACT INFORMATION

Mining Records Curator
Arizona Geological Survey
1520 West Adams St.
Phoenix, AZ 85007
602-771-1601
<http://www.azgs.az.gov>
inquiries@azgs.az.gov

The following file is part of the

Arizona Department of Mines and Mineral Resources Mining Collection

ACCESS STATEMENT

These digitized collections are accessible for purposes of education and research. We have indicated what we know about copyright and rights of privacy, publicity, or trademark. Due to the nature of archival collections, we are not always able to identify this information. We are eager to hear from any rights owners, so that we may obtain accurate information. Upon request, we will remove material from public view while we address a rights issue.

CONSTRAINTS STATEMENT

The Arizona Geological Survey does not claim to control all rights for all materials in its collection. These rights include, but are not limited to: copyright, privacy rights, and cultural protection rights. The User hereby assumes all responsibility for obtaining any rights to use the material in excess of "fair use."

The Survey makes no intellectual property claims to the products created by individual authors in the manuscript collections, except when the author deeded those rights to the Survey or when those authors were employed by the State of Arizona and created intellectual products as a function of their official duties. The Survey does maintain property rights to the physical and digital representations of the works.

QUALITY STATEMENT

The Arizona Geological Survey is not responsible for the accuracy of the records, information, or opinions that may be contained in the files. The Survey collects, catalogs, and archives data on mineral properties regardless of its views of the veracity or accuracy of those data.

PRINTED: 04/17/2002

ARIZONA DEPARTMENT OF MINES AND MINERAL RESOURCES AZMILS DATA

PRIMARY NAME: NATIONAL MINE

ALTERNATE NAMES:

ERIN

NATIONAL CONSOLIDATED

SANTA CRUZ COUNTY MILS NUMBER: 110

LOCATION: TOWNSHIP 23 S RANGE 15 E SECTION 23 QUARTER S2
LATITUDE: N 31DEG 24MIN 33SEC LONGITUDE: W 110DEG 46MIN 54SEC
TOPO MAP NAME: NOGALES - 15 MIN

CURRENT STATUS: PAST PRODUCER

COMMODITY:

COPPER SULFIDE

SILVER

LEAD SULFIDE

GOLD

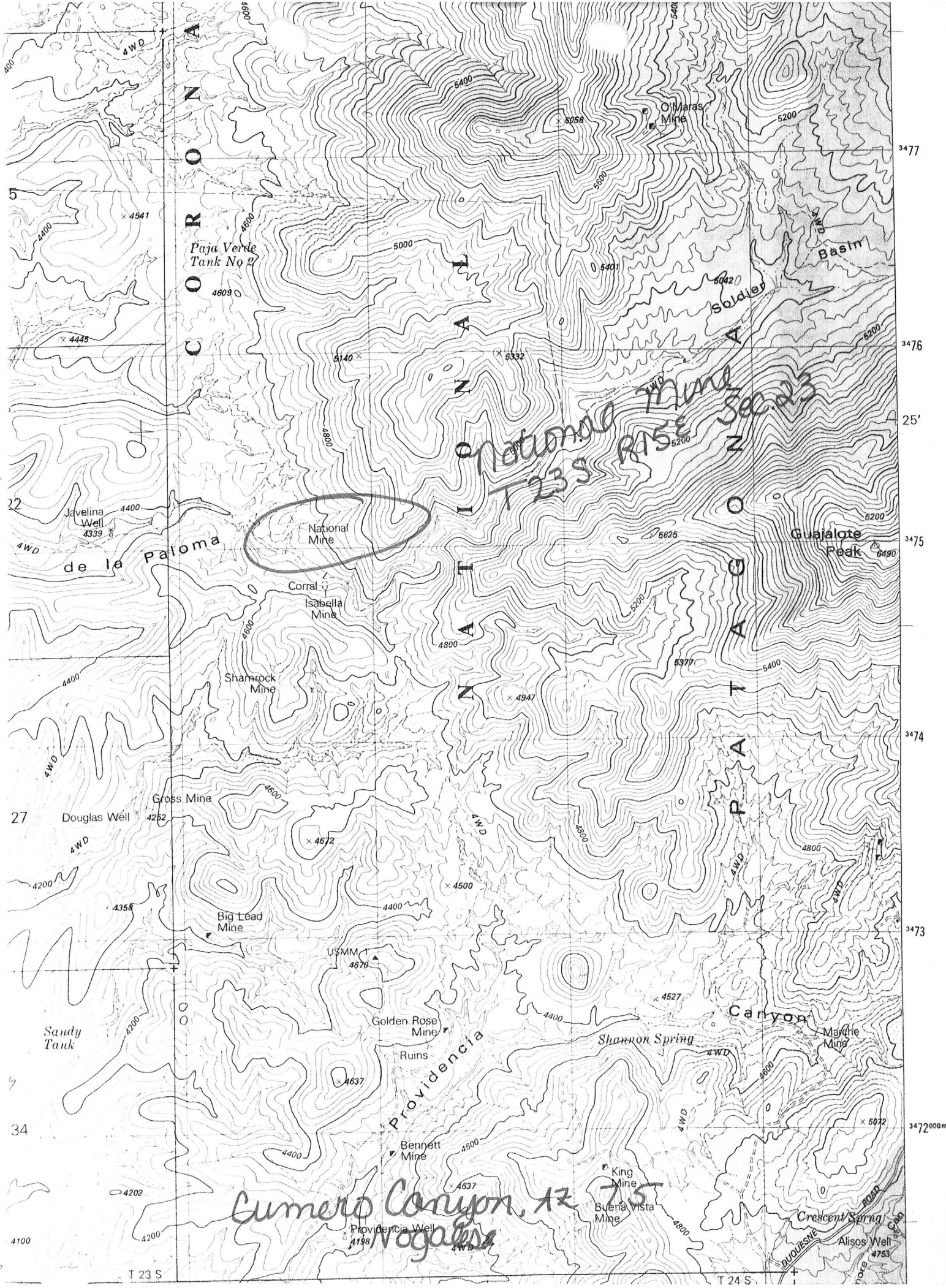
BIBLIOGRAPHY:

AZBM BULL. 191, INDEX TO MINING PROP. IN
SANTA CRUZ CO. P. 81
USBM FIELD NOTES
AZBM CARD FILE SANTA CRUZ CO.
SCHRADER, F.C., 1915, USGS BULL. 582, P. 310
ADMMR NATIONAL MINE FILE
ADMMR "U" FILE CU 17 NOT MAPPED

Cumero Canyon

National Mine
T 23 S R 15 E Sec 23

Cumero Canyon, AZ 7.5
Vogel's



NATIONAL MINE

8/84

SANTA CRUZ COUNTY
PATAGONIA DISTRICT
T23S R15E Sec 23

MILS Santa Cruz Index #110

USGA Bull. 582, p. 310-311

AMB Bull. 191, p. 81

AKA: Erin Mine, National Consolidated Mines Co.

Cumero Canyon, AZ 7.5 (included in file)

* GENERAL REFERENCES

- REFERENCE 1 F1 < USBM - ABGMT < MINION DATA FILE >
- REFERENCE 2 F2 < USBM FILE DATA - CLUSTER # 22, NATIONAL MINE >
- REFERENCE 3 F3 < SCHRADER, F.C., 1915, USGS BULL 582, P. 310-311 >
- REFERENCE 4 F4 < KEITH, S.B., 1975, ABM BULL 191, P. 81 >

M10 < WITH A FAULT SHEAR ZONE >

K5 < WHICH PORPHYRY INTRUDES; OTHER VEINS ON PROPERTY ASSOCIATED WITH STRONG FAULT SHEAR ZONE >

N5 < ABOUT RIGHT ANGLES TO AXIS OF RANGE >

N70 < MONZONITE OUTCROPS NEARBY TO NE >

F5 < ABGMT CLIPPINGS FILE NATIONAL MINE >

F6 < ABGMT FILES STANTON B. KEITH >

F7 < SIMONS, FRANK S., 1974, GEOLOGIC MAP AND SECTIONS OF THE NOGALES AND LOCHIEL QUADRANGLES, SANTA CRUZ COUNTY, ARIZONA; USGS MAP I-762 (1:48000) >

M10
110

U.S. CRIB-SITE FORM

RECORD IDENTIFICATION

RECORD NUMBER B10 < > RECORD TYPE B20 < X.I.M. > DEPOSIT NUMBER B40 < >
 REPORT DATE G1 < 8.2.04 > INFORMATION SOURCE B30 < 1.2 > FILE LINK IDENT. B50 < USBM-0040230297 >
 REPORTER(SUPERVISOR) G2 < LARABA PETER > (last, first, middle initial) < CALDER SUSAN > (last, first, middle initial)
 REPORTER AFFILIATION G5 < ABGMT > SITE NAME A10 < NATIONAL MINE >
 NYNONYMS A11 < ERIN; NATIONAL CONSOLIDATED MINE >

LOCATION

MINING DISTRICT/AREA A30 < PATAGONIA DISTRICT > STATE A50 < AZ > COUNTRY A40 < U.S. >
 COUNTY A60 < SANTA CRUZ >
 PHYSIOGRAPHIC PROV A63 < 1.2 >
 RAINAGE AREA A62 < 1.50503 D.I.V. LOWER COLORADO > LAND STATUS A64 < H.I.V. (1979) >
 QUADRANGLE NAME A90 < NOGALES, AZ > (1958) QUADRANGLE SCALE A100 < 602500 >
 SECOND QUAD NAME A92 < > SECOND QUAD SCALE A91 < >
 ELEVATION A107 < 4800 FT >

JTM
 NORTHING A120 < 3474784 > ACCURACY
 EASTING A130 < 520754 > ACCURATE ACC (circle) ESTIMATED EST < >
 ZONE NUMBER A110 < 1.2 > GEODETIC
 LATITUDE A70 < 31-24-33 N >
 LONGITUDE A80 < 110-46-54 W >

CADASTRAL
 TOWNSHIP(S) A77 < 123 S > RANGE(S) A78 < 01 S E >
 SECTION(S) A79 < 23 >
 SECTION FRACTION(S) A76 < NW OF NW OF SE >
 MERIDIAN(S) A81 < GILA AND SALT RIVER >

POSITION FROM NEAREST PROMINENT LOCALITY A82 < 4 MILES EAST OF NOGALES INTERNATIONAL AIRPORT >
 LOCATION COMMENTS A83 < ON THE NORTH BANK OF CANADA de la PALOMA; 1 3/4 MILES SW OF O'MARA MINE >

* ESSENTIAL INFORMATION
 * ESSENTIAL SOMETIMES OR HIGHLY RECOMMENDED

COMMODITY INFORMATION

COMMODITIES PRESENT C10 CU, WAG, MRB, M
 ORE MINERALS C30 PYRITE, CHALCO PYRITE, ARGENTIFEROUS GALENA
 COMMODITY SUBTYPES C41
 GEN. ANALYTICAL DATA C43 EARLY 1900'S ORE VALUES AVERAGED 6.5% CU, 21.0Z./TON AG, 1.1% PB, 0.40Z./TON AU
 COM. INFO. COMMENTS C50

SIGNIFICANCE

	PRODUCER	NON-PRODUCER
MAJOR PRODUCTS	MAJOR <u>AG</u>	MAIN COMMODITIES PRESENT C11
MINOR PRODUCTS	MINOR <u>CU, WAG, MRB, M</u>	MINOR COMMODITIES PRESENT C12
POTENTIAL PRODUCTS	POTEN	
OCCURRENCES	OCCUR	OCCUR

*PRODUCTION

PRODUCTION <input checked="" type="radio"/> (circle)	PRODUCTION SIZE <input checked="" type="radio"/> SML <input type="radio"/> MED <input type="radio"/> LGE (circle one)	NON-PRODUCER	PRODUCTION <input type="radio"/> UND <input checked="" type="radio"/> NO (circle one)
--	---	--------------	---

*STATUS

EXPLORATION OR DEVELOPMENT

PRODUCER	NON-PRODUCER
STATUS AND ACTIVITY A20 <u>4</u>	STATUS AND ACTIVITY A20 <u>L</u>

DISCOVERER L20 GEORGE GROSS
 YEAR OF DISCOVERY L10 1899 NATURE OF DISCOVERY L30 B YEAR OF FIRST PRODUCTION L40 1906 YEAR OF LAST PRODUCTION L45 1915
 PRESENT/LAST OWNER A12 GEORGE GROSS NATIONAL CONSOLIDATED MINING COMPANY (1906-1915)
 PRESENT/LAST OPERATOR A13 NATIONAL CONSOLIDATED MINING COMPANY (1906-1915)
 EXPL./DEV.COMMENTS L110

DESCRIPTION OF DEPOSIT

DEPOSIT TYPE(S) C40 VEIN / CONTACT METASOMATIC, SHEAR ZONE
 DEPOSIT FORM/SHAPE M10 TABULAR
 DEPTH TO TOP M20 UNITS M21 MAXIMUM LENGTH M40 UNITS M41
 DEPTH TO BOTTOM M30 UNITS M31 MAXIMUM WIDTH M50 3.5 UNITS M51 FT
 DEPOSIT SIZE M15 SMALL MEDIUM M15 LARGE (circle one) MAXIMUM THICKNESS M60 UNITS M61
 STRIKE M70 EAST-WEST DIP M90 70S
 DIRECTION OF PLUNGE M100 PLUNGE M90
 DEP. DESC. COMMENTS M110 BEST COPPER ORE AT DEPTH - NATIONAL NO. 4 PROSPECT IS ON A 2-FT. SILICEOUS GALENA-SILVER VEIN WHICH DIPS 50S IN GRANITE PORPHYRY AND IS PARTLY ASSOCIATED.

BEST COPPER ORE AT DEPTH

DESCRIPTION OF WORKINGS

Workings are: SURFACE M120 UNDERGROUND M130 BOTH M140 (circle one) OVERALL LENGTH M190 UNITS M191
 DEPTH BELOW SURFACE M160 200 UNITS M161 FT OVERALL WIDTH M200 UNITS M201
 LENGTH OF WORKINGS M170 UNITS M171 OVERALL AREA M210 UNITS M211
 DESC. OF WORK. COM. M220 SHAFT CONTAINS ABOUT 400 FT OF DRIFTS; NATIONAL NO. 4 PROSPECT LOCATED ON OPPOSITE SIDE OF CANADA DE LA PALOMA, IS OPENED BY A 90-FT. DRIET AND 90-FT INCLINED WINZE

GEOLOGY

*AGE OF HOST ROCK(S) K1 JUR. LEAD-ALPHA AGE ON ACCESSORY ZIRCON IS 160 ± 20 m.y. (SIMONS, FS, 1974)
 *HOST ROCK TYPE(S) K1A GRANITE PORPHYRY
 *AGE OF IGNEOUS ROCK(S) K2 P.B.E.C. PRECAMBRIAN AGE UNCERTAIN
 *IGNEOUS ROCK TYPE(S) K2A UNDERLYING HORNBLENDE-RICH METAMORPHIC AND IGNEOUS ROCKS; DIORITE
 *AGE OF MINERALIZATION K3 LE.B.E.T. - T.E.R.T.V. (?)
 *PERT. MINERALS (NOT ORE) K4 COARSELY BANDED MINERALIZED, BRECCIATED QUARTZ-LIMONITE
 *ORE CONTROL/LOCUS K5 E-W TRENDING QUARTZ VEIN BETWEEN CONTACT OF GRANITE PORPHYRY AND DIORITE
 *MAJ. REG. TRENDS/STRUCT. N5 DEPOSITS IN REGION ARE MAINLY LEAD-SILVER QUARTZITIC VEINS WHICH STRIKE E-W AT
 *TECTONIC SETTING N15 N-S TRENDING PIEDMONT FAULT; PATAGONIA RANGE UPLIFTED ON EAST
 *SIGNIFICANT LOCAL STRUCT. N70 DEPOSITS MAINLY IN COARSE GRANITE PORPHYRY WHICH INTRUDES QUARTZ MONZONITE
 *SIGNIFICANT ALTERATION N75 MINOR OXIDATION; GRANITE PORPHYRY ALTERED NEAR VEIN
 *PROCESS OF CONC./ENRICH. N80 MINERALIZATION, SUPERGENE ENRICHMENT ALONG VEIN IN CONTACT ZONE
 *FORMATION AGE N30
 *FORMATION NAME N30A
 *SECOND FM AGE N35
 *SECOND FM NAME N35A
 *IGNEOUS UNIT AGE N50 JUR.
 *IGNEOUS UNIT NAME N50A COMORO CANYON GRANITE
 *SECOND IG. UNIT AGE N55
 *SECOND IG. UNIT NAME N55A
 *GEOLOGY COMMENTS N85 GROSS BELT AND FOOTHILLS SEPARATED FROM STEEP SLOPES OF RANGE BY PIEDMONT LIKE VALLEY ALONG WHICH PIEDMONT FAULT RUNS; FAULT EXTENDS NORTHWARDS FOR 6 MILES

GENERAL COMMENTS

GENERAL COMMENTS GEN NATIONAL MINE IS AT NORTH END OF SERIES OF PROPERTIES COMPRISED IN A BELT ABOUT 1.0 MILE WIDE WHICH EXTENDS SOUTHWARD FROM PALOMA CANYON TO PROVIDENCIA CANYON FOR A DISTANCE OF ABOUT 2.5 MILES AND IS REFERRED TO AS THE GROSS BELT