



CONTACT INFORMATION

Mining Records Curator
Arizona Geological Survey
1520 West Adams St.
Phoenix, AZ 85007
602-771-1601
<http://www.azgs.az.gov>
inquiries@azgs.az.gov

The following file is part of the

Arizona Department of Mines and Mineral Resources Mining Collection

ACCESS STATEMENT

These digitized collections are accessible for purposes of education and research. We have indicated what we know about copyright and rights of privacy, publicity, or trademark. Due to the nature of archival collections, we are not always able to identify this information. We are eager to hear from any rights owners, so that we may obtain accurate information. Upon request, we will remove material from public view while we address a rights issue.

CONSTRAINTS STATEMENT

The Arizona Geological Survey does not claim to control all rights for all materials in its collection. These rights include, but are not limited to: copyright, privacy rights, and cultural protection rights. The User hereby assumes all responsibility for obtaining any rights to use the material in excess of "fair use."

The Survey makes no intellectual property claims to the products created by individual authors in the manuscript collections, except when the author deeded those rights to the Survey or when those authors were employed by the State of Arizona and created intellectual products as a function of their official duties. The Survey does maintain property rights to the physical and digital representations of the works.

QUALITY STATEMENT

The Arizona Geological Survey is not responsible for the accuracy of the records, information, or opinions that may be contained in the files. The Survey collects, catalogs, and archives data on mineral properties regardless of its views of the veracity or accuracy of those data.

PRINTED: 04/17/2002

ARIZONA DEPARTMENT OF MINES AND MINERAL RESOURCES AZMILS DATA

PRIMARY NAME: NANCY SILICA

ALTERNATE NAMES:

GILBERT SILICA QUARRY
COURTLAND QUARRY

COCHISE COUNTY MILS NUMBER: 227

LOCATION: TOWNSHIP 19 S RANGE 25 E SECTION 28 QUARTER W2
LATITUDE: N 31DEG 45MIN 00SEC LONGITUDE: W 109DEG 48MIN 05SEC
TOPO MAP NAME: TURQUOISE MOUNTAIN - 7.5 MIN

CURRENT STATUS: PAST PRODUCER

COMMODITY:

SILICON SMELTER FLUX

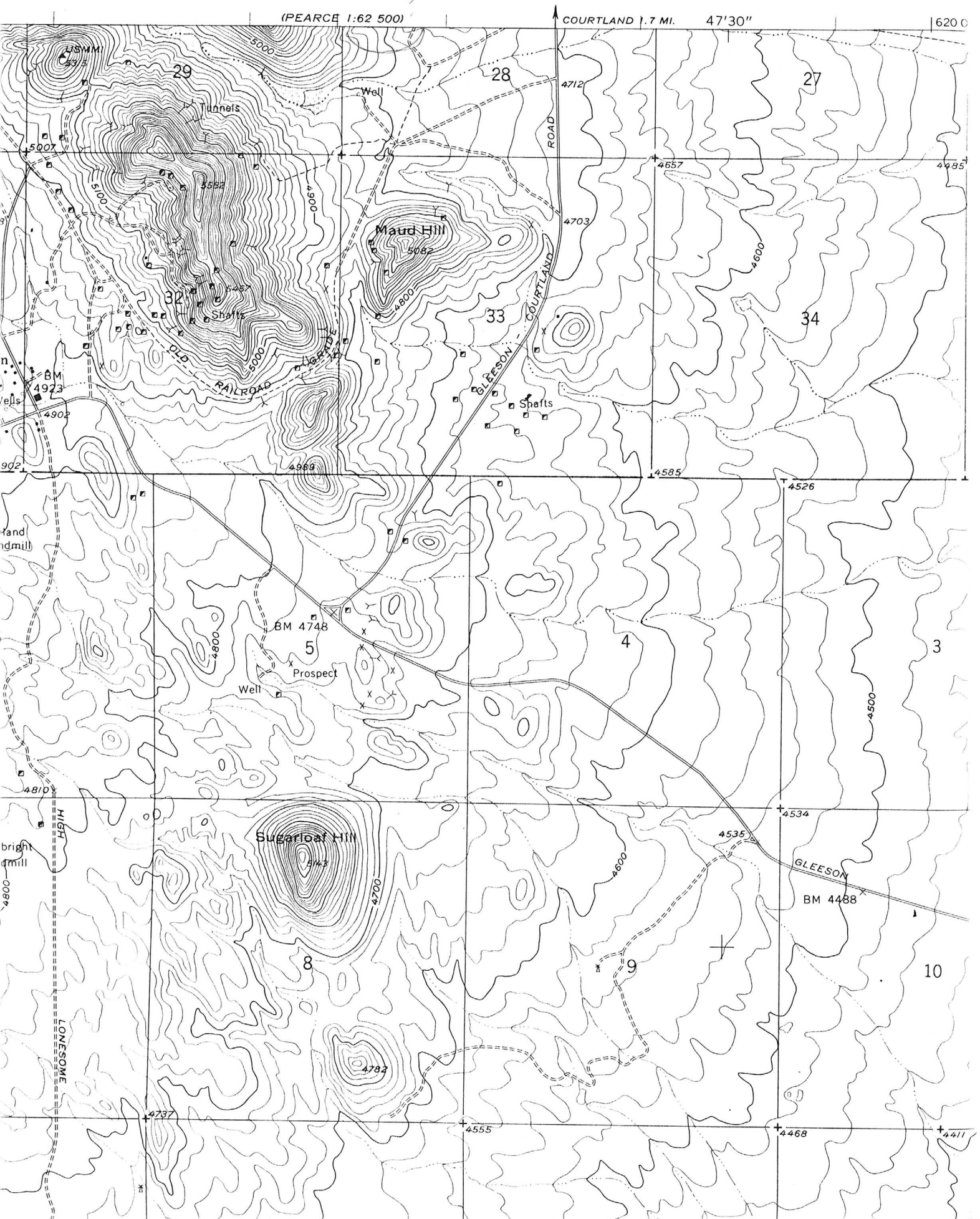
BIBLIOGRAPHY:

USBM PROD TABS
OWN/OP: GILBERT CONSTRUCTION
ELEVATORSKI, E.A. 1978, ARIZ IND. MINERALS p.19

(PEARCE 1:62 500)

COURTLAND 1.7 MI. 47'30"

620 0





COURTLAND-GLEESON
Cu, Au (Pb, Zn, Ag)
Map Reference #13

AVAILABLE LEASE PURCHASE/JV
COCHISE COUNTY, AZ
NH-12-03-01

SUMMARY *Paleozoic-age Abrigo limestone hosts massive gold-copper carbonate replacement deposits (CRD) that are of Jurassic (Bisbee) age. The Star Hill deposit contains an estimated 650,000 tons grading 3.1% Cu and 0.12 opt Au. Several areas remain untested that could substantially expand this resource base.*

PROPERTY *Santa Fe Pacific Gold (SFPG) controls approximately five square miles of this historic mining district through leases of patented and unpatented claims, company held claims, and two Arizona state prospecting permits. The area is located 15 miles due east of Tombstone, approximately 80 miles southeast of Tucson, Arizona.*

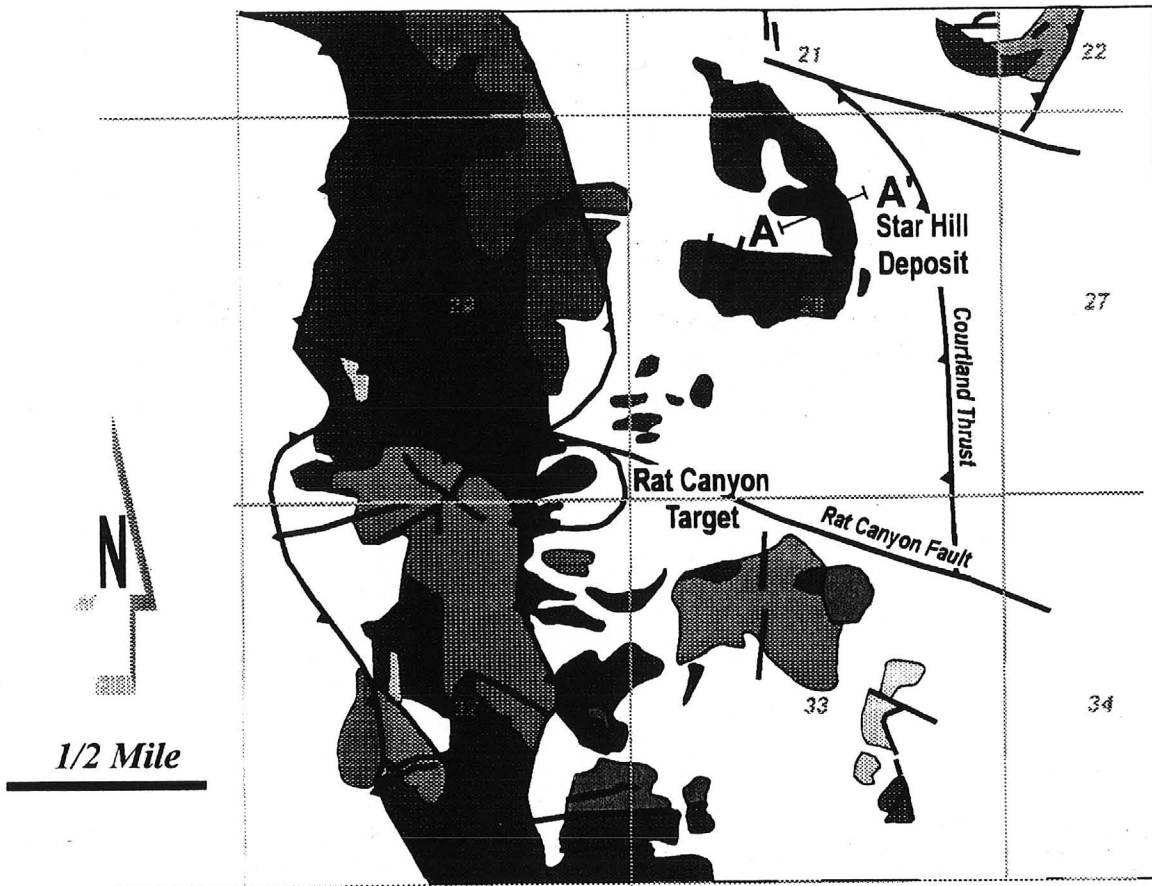
GEOLOGY *Multiple Jurassic-age monzonites intrude the lower Paleozoic carbonate section including Abrigo, Martin and Escabrosa limestones. Associated mineralization is an early Pb-Zn low grade skarn stage followed by Cu-Au carbonate replacement, upon which is superimposed a Tertiary-age gold event. Massive pyritic replacements are 10's to 100's of feet thick with margins further replaced by chalcopyrite/gold mineralization. The Star Hill deposit appears to be a preserved section of Abrigo limestone in a recumbent overturned fold, thrust over barren Cretaceous Bisbee formation. North-south and east-west structural intersections likely influence mineralization and the emplacement of multi-phased intrusion breccias which act as conduits to the carbonate replacements. (See map and cross section on back.)*

PREVIOUS EXPLORATION *The area has been widely explored by major mining companies since the mid-1960's. Union Oil partially delineated a chalcocite resource in intrusives, which in turn caused deeper exploration to be conducted by SFPG, resulting in the Star Hill discovery. SFPG has drilled 44 core holes through the deposit and the lower thrust surface on approximately 200' centers. In addition, IP/resistivity, ground magnetic surveys, as well as wide spaced drill holes in outlying areas, have defined other blind targets.*

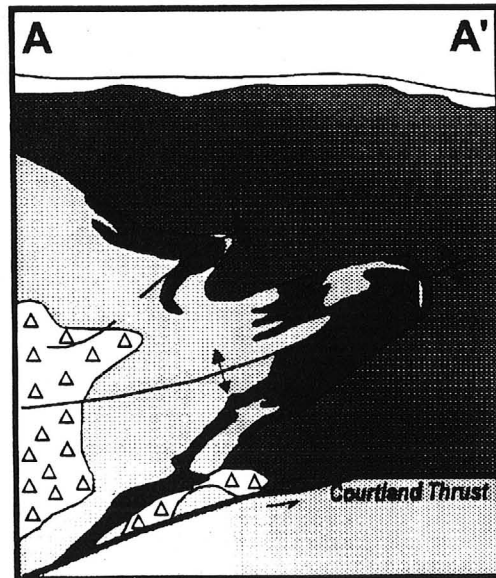
EXPLORATION TARGET *Closer spaced surface drilling followed by a phased underground exploration program from a shaft or decline could likely triple the current resource estimate at Star Hill. Other near-surface drill targets at Maud Hill, Rat Canyon, the Flux Pit and the Northwest Extension of Star Hill offer additional opportunities to expand the resource base.*

GENERALIZED GEOLOGY

T 25 E



**CROSS SECTION
STAR HILL DEPOSIT**



Explanation

- | | |
|---------------------|----------------------------|
| Alluvium | Abrigo Limestone |
| Bisbee Formation | Bolsa Quartzite |
| Horquilla Limestone | Jurassic Intrusive Complex |
| Escabrosa Limestone | Breccia Phases |
| Martin Limestone | Au/Cu Replacement |



SANTA FE PACIFIC
GOLD CORPORATION

**Courtland/
Gleeson**

The Gilbert Construction Co. stopped mining at Courtland Gleeson and moved their operations to the Mule Mountains west of Paul Spar. GWI AR 73-74

I called Cartmell regarding Gilbert Silica. Phelps Dodge has sampled the surface of their gold property but Mr. Gilbert has not advised them of sample results on silica. He told them that Dale would be getting in touch with them. VBD WR 11/29/74

Visited A.J. Gilbert's silica flux quarry 18 miles west of Douglas. GW WR 1/28/77

MAUDE #1-35

2/87

COCHISE COUNTY
T19S R25E Sec 28

227 ?

MG WR 1/30/87: Santa Fe Mining is reportedly drilling their Maude #1-35 group of claims, centered on Sec 28 T19S R25E, Turquoise mining district, Cochise Co. Drilling is next to the Nancy Silica quarry (file).
This is a

Gilbert Silica

Cochise
Pearce District

Just south and east of Sunzonia, the Gilbert Construction Company was doing some work on their new silica quarry, in the Flat Top area. 19S 27E S4. GWI WR 9/14/72

Miner visit. Gilbert Silica operations at Sunzonia. Gate closed; no one around. GWI WR 12/13/72

The Gilbert silica operation just south of Sunizona has been abandoned after two months of operation. The silica was too hard for the crusher. REL WR 9/27/73

Mine visit to Nancy Group, Gilbert Construction Company. Silica quarry operating and shipping. KP Report of trip 11/15/72 thru 11/16/72

Nancy lease - The Gilbert construction Co. is still mining and shipping silica. They are planning on soon moving their mining to the flat top hills area as soon as this is opened up. A name for the operation will be obtained along with a more accurate discription of the area. GWI Note 10/2/72

Mine visit to Mr. Gilbert's new operation to obtain precise location of the property. The location of the Jack Gilbert quarry is in the Squaretop Hills quadrangle within S22 18S 26E. GWI WR 10/2/72

Mine visit. Gilbert Nancy lease at Courtland operating at usual rate 1000 TPD
GWI WR 12/13/72

Active Mine List - October 1972 - Empl. 16

A field visit was made to Gilbert Const. Co's Nancy Group at Courtland where silica is being quarried and ground for fluxing use at the Douglas smelter. Mr. Dan Keeler, mine supt, was interviewed for data in the Active Mines Directory. He said that the quarry would be shut down in 3 days because of the expensive haul to Douglas and that their stockpile will only last 4 months. They must locate another quarry site.
REL WR 9/27/73

NANCY LEASE

COCHISE COUNTY

The Gilbert Construction Company at Gleeson continues production from their Nancy Lease, which produces silica flux for Phelps-Dodge at Douglas. GWI QR 12/31/70

Mine visit. Nancy Lease still 1000 tpd. GWI WR 2/8/71

The Gilbert Construction Co. continues production of silica flux at their Nancy Lease at approximately the same rate - 1000 tpd. GWI QR 4/1/71

Mine visit - Nancy Lease - Gilbert Silica GWI WR 6-7-71

The Gilbert Construction Co. continues production at their Nancy Lease, of silica for the Douglas Smelter. They are planning on production soon from another area across the valley and north. GWI QR 6-30-71

Dir. of Mining - August 1971 - 25 employees.

Mine visit. Nancy Lease, Gilbert Construction Co. (No change). GWI WR 10/5/71

The Gilbert Construction Company continues silica production from their Nancy Lease, at last report they had not been doing much work at their proposed future operations north of Elfrida. GWI QR 9/71

The Gilbert Construction Company continued as usual from their Nancy lease. They have not been able to start production from their property north of Elfrida because of complaints. GWI QR Oct-Dec '71

Same production, one less employee talked to Dan Keeler. (NANCY). GWI WR 2/8/72

Mine visit. Nancy lease, Gleeson, 25 employees, tonnage same. GWI WR 4/4/72

Mine visit. Nancy lease, Gleeson, production & manpower, no change. GWI WR 6/14/72

Gilbert Construction Company is still shipping from their Nancy lease, and will not move to the new location until the fate of the Douglas smelter is settled. GWI 4 1/2 '72

mine visit. Nancy lease of the Gilbert Company at Courtland. Still shipping silica to Douglas. 16 employees. A few days lightning hit a large grader and set the rear tires on fire resulting in considerable damage to the machine which was parked in the yard near the shop. Three of the crew were working at the new pit in the Flat Top Hills area. GWI WR 9/14/72

NANCY GROUP #2

COCHISE COUNTY

Nancy Group near Gleason closed down during the strike. GWI WR 10-8-67

Active Mine List Nov. 1967 - 23 men

Mine visit to the Nancy Group #2 - closed down during the strike. GWI WR 1-7-68

Visited the Nancy Group, Gilbert's Silica operation, no one around. GWI WR 3-16-68

Active Mine List April 1968 - 23 men

The Gilbert Construction Co. resumed operations at their silica property as soon as the strike was settled. GWI QR 6-1968

Active Mine List Oct. 1968 - 21 men

Visited mine - operating. GWI WR 11-16-68

The A.J. Gilbert Co. continued shipping approximately 1000 tpd of silica from the Nancy lease to Douglas. GWI QR 12-1968

A. J. Gilbert Construction Co. continues producing 1000 tpd from the Nancy Silica Pit at Gleason. GWI QR 3-1969

Active Mine List April 1969 - 21 men

A.J. Gilbert Co. continues to mine silica for the Douglas smelter from the Nancy Group. GWI QR 9-1969

A.J. Gilbert is still mining at the 1000 tpd rate at the Nancy Silica mine. GWI QR 2-27-70

Gilbert Construction Co. continued shipping the 1000 tpd of silica from their Nancy Lease to Douglas. GWI QR 4-1-70

Active Mine List May 1970 - 25 men

The Gilbert Construction Company continued shipping 1000 tpd from the Nancy Lease at Gleason. GWI QR 6-30-70

Active Mine List Oct. 1970 - 25 men

NANCY GROUP

COCHISE COUNTY

Field interview with Dan Keeler and Mr. Gilbert from Nancy Group. Nancy Group operations were unchanged.

GWI WR 5/14/66

Active Mine List Oct. 1966 - 24 men
Active Mine List April 1967 - 23 men

Arizona Department of Mines and Mineral Resources

VERBAL INFORMATION SUMMARY

May be Reproduced

1. Information from: Manuel Rivera - A.J. Gilbert Construction Co
Address: P O Box 5288, Bisbee, Arizona 85603
2. Mine: Courtland Quarry 3. ADMMR Mine File
4. County: Cochise 5. District Turquoise District
6. Township 19S Range 25E Sec(s) NW $\frac{1}{4}$, 28
7. Location: Approximately 1 $\frac{1}{2}$ miles south of Courtland
8. No. of Claims - Patented Unpatented Travis #1-#6
9. Owner (if different from above)
10. Address:
11. Operating Company:
12. Pertinent People and/or Firm:
13. Commodities: Silica Flux
14. Operational Status: Production pending
15. Summary of information received, comments, etc.:

The six subject mining claims were located by A.J. Gilbert Construction on a silica (quartzite) deposit which will be mined for use as smelter flux at Phelps Dodge's Douglas Smelter. Production is planned before the end of 1985.

The Courtland Quarry is in the same general area as their Nancy Quarry was.

Date: 10-21-85

Ken A. Phillips
(Signature)

ADMMR

DEPARTMENT OF MINERAL RESOURCES
STATE OF ARIZONA
FIELD ENGINEERS REPORT

Mine Gilbert Silica Quarry (Nancy Lease)

Date December 13, 1973

District Turquoise (Courtland)

Engineer R.E. Lehner

Subject: Engineer's Field Visit (927-73)

Location: Quarry - T 19S, R 25 E, Sec. 28 (just S. of Courtland)

Owner: Gilbert Construction Company
Pres. A.J. Gilbert, Jr.; Mine Supt. Dan Keeler
P.O. Box 5288, Bisbee, Arizona 85603 (phone: 432-2078)

Quarry - Courtland, Arizona (phone: 642-3337)
Shop - Elfrida, Arizona (phone: 642-3432)

Commodity: SILICA FLUX - supplying Phelps Dodge's Douglas smelter

Production: 600 Tpd.

Operations: Gilbert Silica has operated this quarry since 1961 and have averaged about 220,000 t/yr. Pollution controls will force P.D. to cut back production so the silica production will be reduced to 140,000 Tp/yr. The silica runs better than 90%; alumina is 2%; iron is 1 $\frac{1}{2}$ %. The material is crushed and hauled 40 miles south to the smelter at Douglas. Mr. Keeler told me on Sept. 27th that the operation will close down in three days because their transportation costs are too expensive. They have a stockpile of silica which will last 4 months. They will be looking for a new silica source, preferable on or near the railroad.

DEPARTMENT OF MINERAL RESOURCES
STATE OF ARIZONA
FIELD ENGINEERS REPORT

Mine		Date	April 12, 1973
District	Pearce	Engineer	John H. Jett
Subject:	Mine Visit		

Gilbert Construction Co.
Dan Keeler - General Foreman

The new mine is 11 miles north of Elfrida on State Hiway 666, one half mile east off the road.

First blast was made 4-11-73. Much secondary needed. Silica content 94-95%. Approximately 80,000 tons broken. Will provide 5,000 tons per week. Receive \$3.65 per ton delivered to Douglas smelter.

Will install a new 36x46 portable jaw crusher. Will crush a year's supply to ^{minus}mine-6" then move to other jobs. (This will be largest portable in the State).

Grade of silica at their old pit near Gleeson dropped to 85-88%.

DEPARTMENT OF MINERAL RESOURCES
STATE OF ARIZONA
FIELD ENGINEERS REPORT

Mine Nancy Group #1

Date Sept. 14, 1961

District Elfrida District, Cochise County

Engineer Axel L. Johnson

Subject: Present Status. Information from Jack Gilbert

References: Reports of Feb. 10, 1961 and Sept. 15, 1960.

Present Mining Activity: Mining and screening high silica material, and shipping same to the Phelps Dodge smelter at Douglas for use as high silica flux. This operation is now operated alternately together with Nancy #2, which is located about 3/4 mile east of Gleeson (see report of Nancy #2). A total of 25 men are employed on the two operations - 11 men on the mining and screening operations, 4 men loading trucks and 10 truck drivers. Mining and screening operations are working one shift, 5 days per week. Trucking is done on 2 shifts, 5 days per week, 5 trucks being used. Combined production from both quarries is about 800 tons per day.

Active Feb. 1962

Active Oct. 1962 - 24 men working

DEPARTMENT OF MINERAL RESOURCES

STATE OF ARIZONA

FIELD ENGINEERS REPORT

Mine Nancy Group

Date Feb. 10, 1961

District Elfrida District, Cochise County

Engineer Axel L. Johnson

Subject: Present Status. Information from Dan Keeler, foreman and personal visit.

References Report of Sept. 15, 1960

Present Mining Activity Mining and screening high silica material, and shipping same to the Phelps Dodge Douglas smelter for use as high silica flux. A total of 24 men are employed --- 14 men working on the mining and screening operation, and 10 men driving trucks, hauling the product to Douglas. The mining and screening operation is working one shift, and the truck driving is on a 2 shift basis. Production is about 800 tons per day.

Review of Operations Same as report of Sept. 15, 1960, to date.

Mr. Keeler now reports that they are running out of loose material, which can be excavated without drilling, blasting and crushing, and that they are now getting ready to mine the hard, bedrock material. Blast holes will be drilled with a wagon drill, and a crusher will be installed.

DEPARTMENT OF MINERAL RESOURCES

STATE OF ARIZONA

FIELD ENGINEERS REPORT

Mine Nancy Group

Date Sept. 15, 1960

District Elfrida District, Cochise County

Engineer Axel L. Johnson

Subject: Field Engineers Report. Personal visit and information from Dan Keeler, Foreman.

Location: Approximately 11 miles NE of Elfrida.

Number of Claims: 13 unpatented claims - 11 on Federal land and 2 on State land, covered by State leases.

Owner & Operator: A. J. Gilbert, Warren, Ariz.

Principal Product: Quartz rock, used by smelter as high silica flux.

Present Mining Activity: Mining and screening high silica material, and shipping same to the Douglas smelter. 22 men working, 2 shifts, 5 days per week. Production about 700 tons per day.

Milling and Marketing: Material is treated in a screening plant. Screened product is trucked to the Phelps Dodge smelter at Douglas.

Past History & Production: None . This is a new project.

Review of Operations: Loose, high silica material, which has been eroded from higher up on the hillside, and redeposited along its lower slopes, is being mined and screened to furnish a high silica flux for the Douglas smelter. No drilling and blasting is required. Bulldozers are used to excavate the material and push it to the screening plant, where it is passed over 1 inch vibrating screens. The undersize (-1 in.) is mostly clay and is rejected. The oversize (+ 1 in.) is mostly quartz and is shipped. About 40% of the material goes through the screens and is rejected, and the remaining 60% is shipped. The screened material is loaded on trucks with a front end loader, and hauled 3/4 miles to the smelter. 5 trucks are needed for this purpose. All operations are on a 2 shift basis, 12 men working in the mining and screening operation, and 10 men being employed as truck drivers for hauling the product. Equipment used is as follows:

3 bulldozers	1 road grader
1 front end loader	5 trucks for hauling to Douglas
1 Diesel 3/4 ton shovel	1 water truck

Past Operations: Operations at the silica pit in the Whetstone Mts. was discontinued on account of the high cost of drilling and blasting and the increase in the freight rates. The Nancy Group provides a more economical operation.

ARIZONA DEPARTMENT OF MINERAL RESOURCES
Mineral Building, Fairgrounds
Phoenix, Arizona

1. Information from: A. J. Gilbert
- Address: 304 E Vista Warren
2. Mine: Nancy Lease 3. No. of Claims - Patented _____
Unpatented _____
4. Location: Gleason AZ (2 miles NE of)
5. Sec 28 Tp 19S Range 25E 6. Mining District Turquoise
7. Owner: Castello Estate
8. Address: _____
9. Operating Co.: Jack Gilbert
10. Address: 304 E Vista Warren
11. President: _____ 12. ^{Foreman} Gen. Mgr.: Dan Keeler
13. Principal Metals: Silica Flux 14. No. Employed: 13
15. Mill, Type & Capacity: _____
16. Present Operations: (a) Down (b) Assessment work (c) Exploration
(d) Production (e) Rate _____ tpd.
17. New Work Planned: _____

18. Misc. Notes: _____

A. J. Gilbert is still mining at the 1000 tpd rate at the Nancy Silica mine.
GWI Quarterly Report 2/27/70

Gilbert Construction Co. continued dipping the 1000 tpd of silica from their Nancy
Lease to Douglas. GWI quarterly report 4/1/70

Date: 10-8-69 _____
(Signature) [Signature] (Field Engineer)

DEPARTMENT OF MINERAL RESOURCES

STATE OF ARIZONA

FIELD ENGINEERS REPORT

Mine Nancy #2 Date July 7, 1967
District Turquoise Engineer G.W. Irvin
Subject: Engineers visit, information from Dan Keeler, Foreman.

Present mining activity, same as Mr. Johnson's report of 9-13-67.
Except for annual PD shutdown for vacations.

The Gilbert Construction Company has leased three patented claims
from the Costello estate.

According to Mr. Keeler the mining area is leased from the Costello
estate 60% of the total and 40% from Minerals Exploration.

DEPARTMENT OF MINERAL RESOURCES

STATE OF ARIZONA
FIELD ENGINEERS REPORT

Mine Nancy Group #2

Date March 12, 1965

District Turquoise District, Cochise Co.

Engineer Axel L. Johnson

Subject: Field Engineers Report. Information from Dan Keeler, General Foreman.

Reference: Report of Jan. 15, 1965 & previous reports.

Present Mining Activity: Mining and screening the quartzite rock, and trucking same to the Phelps Dodge smelter at Douglas for use as high silica flux.

A total of 24 men are employed in this operation, 16 men in the mining, screening and loading operations, and 8 truck drivers. 2 portable screening plants are now in use, being located in opposite sides of the pit. Work is carried on 5 days per week, day shift only. 8 haulage trucks are now in use.

Production is now about 3,500 tons per week.

A crusher was installed about one week ago at one of the plants, which is now used for crushing some of the oversize material.

1

DEPARTMENT OF MINERAL RESOURCES

STATE OF ARIZONA
FIELD ENGINEERS REPORT

Mine "Nancy Group #2

Date January 15, 1965

District Turquoise District, Cochise Co.

Engineer Axel L. Johnson

Subject: Field Engineers Report. Information from Dan Keeler, General Foreman.

References: Report of Sept. 12, 1963 and previous reports.

Location: Approx. Sec. 28 - T. 19 S. - R. 25 E. About 2 miles NE of Gleeson by air, and about 4 miles by road.

Owners: Costello Estate, Tombstone, Ariz. and Mineral Exploration Corp. (Union Oil Co.)

Lessee: Jack Gilbert, Warren, Ariz. (304 E. Vista)

Principal Minerals: Quartzite rock, used as silica flux.

Present Mining Activity: Mining and screening the quartzite rock, and trucking same to the Phelps Dodge smelter at Douglas for use as high silica flux.

A total of 24 men are employed in this operation, 16 men in the mining, screening and loading operations, and 8 truck drivers. 2 portable screening plants are now in use, being located in opposite sides of the pit. Work is carried on 6 days per week, day shift only. 10 trucks are used, two of these being leased.

Mr. Keeler reports that the production now is about 5,000 tons per week. This is a considerable increase from last fall and summer.

He states that about 55% of the material run through the screening plant consists of dirt and undersize rock, and is therefore, screened out, leaving 45% for trucking to the smelter. This material runs 90%+ silica.

To date, no drilling, blasting or rock crushing has been necessary, bulldozers being used to excavate the loose silica material from the hillside and pushing it to the screening plant.

Proposed Plans: Mr. Keeler stated that a crusher will have to be installed soon, as too much of the rock material is now oversize.

DEPARTMENT OF MINERAL RESOURCES

STATE OF ARIZONA
FIELD ENGINEERS REPORT

Mine Nancy Group # 2 (Costello Group) Date Sept. 12, 1963
District Turquoise District, Cochise Co. Engineer Axel L. Johnson
Subject: Field Engineers Report. Information from Dan Keeler, General Foreman.

References Reports of Sept. 13, 1962, and Sept. 14, 1961

Location Approx. Sec. 28 -- T 19 S -- R 25 E. About 2 miles NE of Gleeson by air,
and about 4 miles by road.

Owners Costello Estate, Tombstone, Ariz.

Lessee Jack Gilbert, Warren, Ariz.

Principal Minerals Silica flux

Present Mining Activity Mining and screening high silica material and trucking same to the Phelps Dodge smelter at Douglas for use as high silica flux. A total of 18 men are employed on this operation ---- 7 men on the mining and screening operations, 1 man loading cars, 6 truck drivers, 1 truck foreman, 2 mechanics, and the general foreman, Dan Keeler. Both mining and screening operations and the trucking are being done on 1 shift, 5 days per week. Production of silica flux is now about 2,800 tons per week. This is a reduction from about 4,000 tons per week previously reported. Mr. Keeler states that Phelps Dodge Corp. now obtains more high silica ore from the Lavender Pit, and, therefore, do not require as much silica to add to their furnaces.

Review of Operations Same as report of Sept. 13, 1962.

Ore Values Quartz and quartzite, with no ore content.

active 1/63 - 18 men

DEPARTMENT OF MINERAL RESOURCES

STATE OF ARIZONA

FIELD ENGINEERS REPORT

Mine Nancy Group #2 (Costello Group)

Date September 13, 1962

District Turquoise District, Cochise Co.

Engineer Axel L. Johnson

Subject: Field Engineers Report. Information from Dan Keeler.

References: Report of November 16, 1961.

Principal Minerals: Silica flux.

Present Mining Activity: Mining and screening high silica material and trucking same to the Phelps Dodge smelter at Douglas for use as high silica flux. A total of 24 men are employed on this operation - 9 men on the mining and screening operations, 1 man loading cars, 10 truck drivers (5 on each of 2 shifts), 1 truck foreman, 2 mechanics and the general foreman, Mr. Keeler. The mining and screening operations are being worked 1 shift 5 days a week. The trucking is done on 2 shifts, 5 days a week, 5 trucks being used. Production of silica flux is about 800 tons per day.

Ore Values: The material mined consists of quartz and quartzite with no ore content of any kind.

Review of Operations: Loose, high silica material, which has been eroded from higher up on the hillside, and redeposited along its lower slopes, is being mined and screened to furnish a high silica flux for the Douglas smelter. No drilling and blasting is required. Bulldozers are used to excavate the material and push it to the screening plant, where it is passed over 1 inch vibrating screens. The undersize (-1 in.) is mostly clay and is rejected. The oversize (+1 in.) is mostly quartz and is shipped. About 45% of the material goes through the screens and is rejected, and the remaining 55% is shipped. The screened material is loaded on trucks with a front end loader, and hauled 3/4 miles to the smelter.

Active Mine List Oct. 1962 - 24 men working

10

DEPARTMENT OF MINERAL RESOURCES
STATE OF ARIZONA
FIELD ENGINEERS REPORT

Mine Nancy Group # 2

Date Nov. 16, 1961

District Turquoise District, Cochise Co.

Engineer Axel L. Johnson

Subject: Field Engineers Report.

Location (Correction to Sept. 14, 1961 report)

Approximately Sec. 28, T 19 S, R 25 E. About 2 miles NE of Gleeson by air, and about 4 miles by road. Also about 1 mile south of Courtland, and 0.65 miles west of the Gleeson-Courtland road.

Owners Costello Estate

Lessee: Jack Gilbert, Warren, Ariz.

Principal Minerals Silica flux

Present Mining Activity Same as Sept. 14, 1961 report.

DEPARTMENT OF MINERAL RESOURCES
STATE OF ARIZONA
FIELD ENGINEERS REPORT

Mine Nancy Group #2

Date Sept. 14, 1961

District Turquoise District, Cochise Co.

Engineer Axel L. Johnson

Subject: Field Engineers Report. Information from Jack Gilbert.

Location: Approx. Sec. 32, T. 19 S., R. 25 E. About 3/4 mile east of Gleeson.

Owners: Costello Estate

Lessee: Jack Gilbert, Warren, Ariz.

Principal Minerals: Silica flux

Present Mining Activity: Mining and screening high silica material and shipping same to the Phelps Dodge smelter at Douglas for use as high silica flux. This operation is now operated alternately together with Nancy #1, which is located 11 miles NE of Elfrida (see report of Nancy #1). A total of 25 men are employed on the two operations - 11 men on the mining and screening operations, 4 men loading trucks and 10 truck drivers. Mining and screening operations are working one shift, 5 days per week. Trucking is done on 2 shifts, 5 days per week, 5 trucks being used. Combined production from both quarries is about 800 tons per day.