



CONTACT INFORMATION

Mining Records Curator
Arizona Geological Survey
1520 West Adams St.
Phoenix, AZ 85007
602-771-1601
<http://www.azgs.az.gov>
inquiries@azgs.az.gov

The following file is part of the

Arizona Department of Mines and Mineral Resources Mining Collection

ACCESS STATEMENT

These digitized collections are accessible for purposes of education and research. We have indicated what we know about copyright and rights of privacy, publicity, or trademark. Due to the nature of archival collections, we are not always able to identify this information. We are eager to hear from any rights owners, so that we may obtain accurate information. Upon request, we will remove material from public view while we address a rights issue.

CONSTRAINTS STATEMENT

The Arizona Geological Survey does not claim to control all rights for all materials in its collection. These rights include, but are not limited to: copyright, privacy rights, and cultural protection rights. The User hereby assumes all responsibility for obtaining any rights to use the material in excess of "fair use."

The Survey makes no intellectual property claims to the products created by individual authors in the manuscript collections, except when the author deeded those rights to the Survey or when those authors were employed by the State of Arizona and created intellectual products as a function of their official duties. The Survey does maintain property rights to the physical and digital representations of the works.

QUALITY STATEMENT

The Arizona Geological Survey is not responsible for the accuracy of the records, information, or opinions that may be contained in the files. The Survey collects, catalogs, and archives data on mineral properties regardless of its views of the veracity or accuracy of those data.

PRINTED: 04/17/2002

ARIZONA DEPARTMENT OF MINES AND MINERAL RESOURCES AZMILS DATA

PRIMARY NAME: MUSEUM MINING GROUP

ALTERNATE NAMES:

SILVER MUSEUM
SWILLING
GOLD COIN CLAIMS

YAVAPAI COUNTY MILS NUMBER: 915B

LOCATION: TOWNSHIP 8 N RANGE 1 E SECTION 8 QUARTER NE
LATITUDE: N 34DEG 03MIN 26SEC LONGITUDE: W 112DEG 16MIN 40SEC
TOPO MAP NAME: COLUMBIA - 7.5 MIN

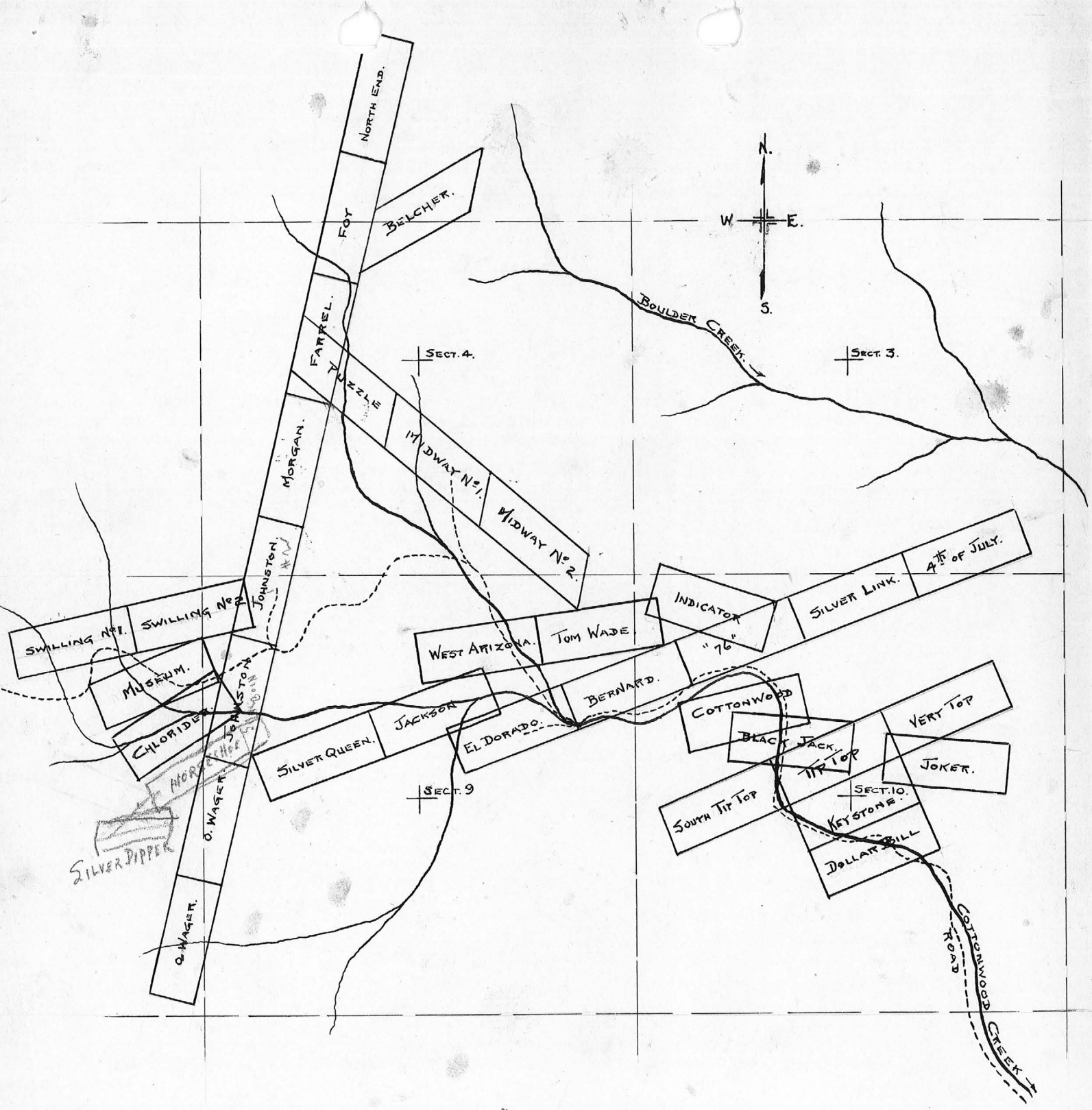
CURRENT STATUS: PAST PRODUCER

COMMODITY:

GOLD

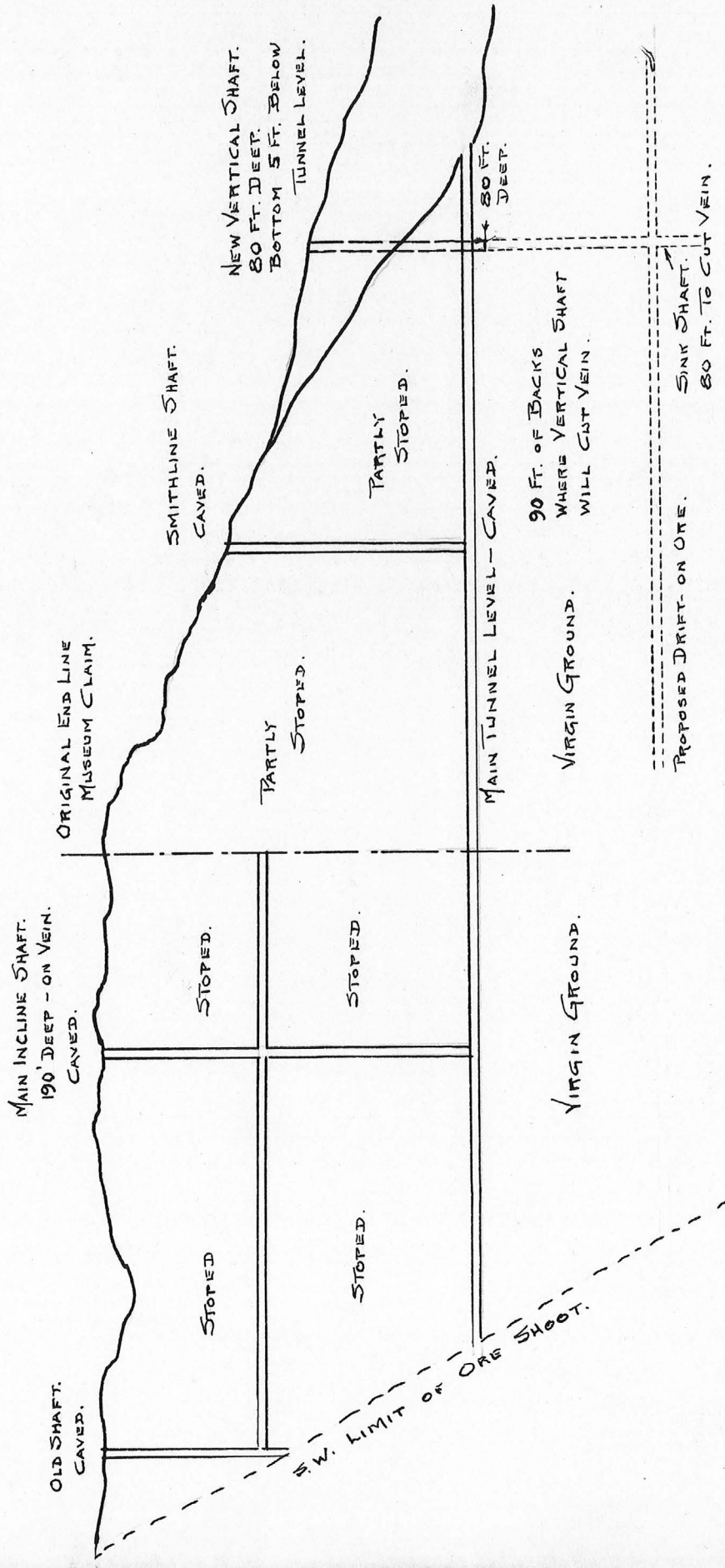
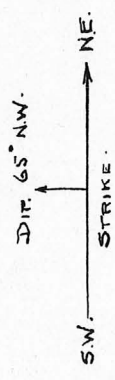
BIBLIOGRAPHY:

USGS COLUMBIA QUAD
ADMMR MUSEUM MINING GROUP FILE
ADMMR TIPTOP MINES FILE
ABM Bull, 180, p. 161, 163



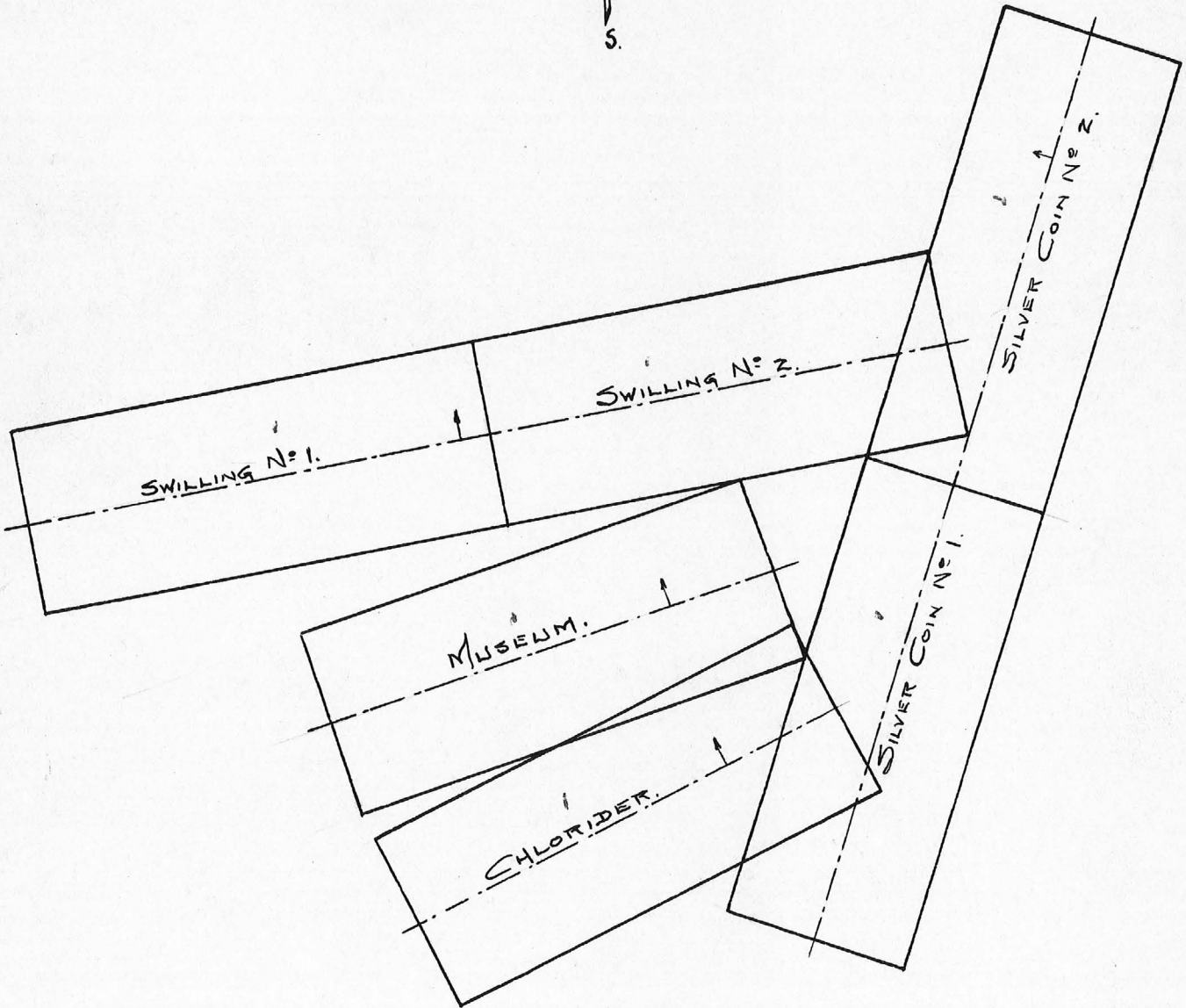
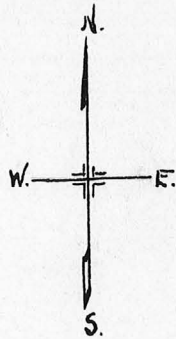
TIP TOP MINING DISTRICT.
 YAVAPAI COUNTY.
 ARIZONA.

TOWNSHIP 8 N - RANGE 1 E.
 SECTIONS 3, 4, 9 AND 10.
 SCALE 1" = 1600 FEET.



SKETCH OF MUSEUM MINE WORKINGS.
 TIP TOP MINING DISTRICT.
 YAVAPAI COUNTY.
 ARIZONA.

SCALE $\frac{1''}{8} = 10 \text{ FT.}$ J.S.C.



CLAIM MAP
MUSEUM MINING GROUP
TIP TOP MINING DISTRICT.
YAVAPAI COUNTY.
ARIZONA.

SCALE $\frac{3}{16}'' = 100\text{ft.}$

MUSEUM MINING GROUP

YAVAPAI COUNTY

KAP WR 4/15/83: Fred Lorette reported Black Thunder Ltd. and Imfamay Ltd. have drilled the Museum and the Swilling mines. Vein material was reported to be leached to a depth of 300 feet.

* GENERAL REFERENCES

REFERENCE 1 F1 < AR DEPT OF MIN. RESOUR FILE DATA >
 REFERENCE 2 F2 < ABGMT - USBM FILE DATA >
 REFERENCE 3 F3 < >
 REFERENCE 4 F4 < >

U.S. CRIB-SITE FORM

RECORD IDENTIFICATION

RECORD NUMBER B10 < >
 REPORT DATE G1 < 8.1.10 >
 REPORTER(SUPERVISOR) G2 < DEWITT, ED H. >
 REPORTER AFFILIATION G5 < ABGMT >
 SYNONYMS A11 < MUSEUM GROUP, SILVER MUSEUM >

RECORD TYPE B20 < X, I, M >
 INFORMATION SOURCE B30 < 1, 2 >
 DEPOSIT NUMBER B40 < >
 FILE LINK IDENT. B50 < USBM 004 025 1461 >

(last, first, middle initial) (last, first, middle initial)

SITE NAME A10 < MUSEUM MINE >

LOCATION

MINING DISTRICT/AREA A30 < TIA TDP DISTRICT >
 COUNTY A60 < YAVAPAI >
 PHYSIOGRAPHIC PROV A63 < 1, 2, K >
 DRAINAGE AREA A62 < 1, 5, 0, 7, 0, 1, 0, 2, K >
 QUADRANGLE NAME A90 < COLUMBIA (1, 9, 6, 9) >
 SECOND QUAD NAME A92 < (, , , , ,) >
 ELEVATION A107 < 3, 0, 4, 0, K, F, T >

STATE A60 < AZ >
 COUNTRY A40 < U.S. >
 LAND STATUS A64 < 0, 0, K, K, (, , , , ,) >
 QUADRANGLE SCALE A100 < 2, 4, 0, 0, 0 >
 SECOND QUAD SCALE A91 < (, , , , ,) >

UTM
 NORTHING A120 < 3, 7, 6, 9, 0, 0, 0 >
 EASTING A130 < 3, 8, 2, 0, 0, 0 >
 ZONE NUMBER A110 < 1, 1, 2 >

*ACCURACY
 ACCURATE ACC (circle)
 ESTIMATED EST < >

GEODETIC
 LATITUDE A70 < - - - - - N >
 LONGITUDE A80 < - - - - - W >

CADASTRAL
 TOWNSHIP(S) A77 < 10, 0, 8, N, : : K, : : K, : : K, : : K >
 SECTION(S) A79 < 06 >
 SECTION FRACTION(S) A76 < NE >
 RIDIAN(S) A81 < GILA AND SALT RIVER >

RANGE(S) A78 < 10, 0, 1, E, : : K, : : K, : : K, : : K >

POSITION FROM NEAREST PROMINENT LOCALITY A82 < 8.8 MILES WEST OF BLACK CANYON CITY, ARIZONA >
 LOCATION COMMENTS A83 < LOCATION TAKEN TO BE MIDDLE OF MUSEUM CLAIM >

* ESSENTIAL INFORMATION
 + ESSENTIAL SOMETIMES OR HIGHLY RECOMMENDED

COMMODITY INFORMATION

COMMODITIES PRESENT C10 < A.G. W.A.U. >
 ORE MINERALS C30 < SILVER, UNKN OWNS >
 COMMODITY SUBTYPES C41 < >
 GEN. ANALYTICAL DATA C43 < >
 COM. INFO. COMMENTS C50 < >

SIGNIFICANCE

| | | |
|--------------------|-----------------------|-----------------------------------|
| | PRODUCER | NON-PRODUCER |
| MAJOR PRODUCTS | MAJOR < A.G. W.A.U. > | MAIN COMMODITIES PRESENT C11 < > |
| MINOR PRODUCTS | MINOR < A.U. B.C.M. > | MINOR COMMODITIES PRESENT C12 < > |
| POTENTIAL PRODUCTS | POTEN < W. > | |
| OCCURRENCES | OCCUR < > | OCCUR < > |

*PRODUCTION

| | |
|---|--------------------------------|
| PRODUCER | NON-PRODUCER |
| PRODUCTION <input checked="" type="checkbox"/> (YES) (circle) PRODUCTION SIZE <input checked="" type="checkbox"/> (SM) MED LGE (circle one) | PRODUCTION UND NO (circle one) |

*STATUS

EXPLORATION OR DEVELOPMENT

| | |
|-------------------------------|-------------------------------|
| PRODUCER | NON-PRODUCER |
| STATUS AND ACTIVITY A20 < 4 > | STATUS AND ACTIVITY A20 < 1 > |

DISCOVERER L20 < >
 YEAR OF DISCOVERY L10 < > NATURE OF DISCOVERY L30 < B > YEAR OF FIRST PRODUCTION L40 < > YEAR OF LAST PRODUCTION L45 < 1934 >
 PRESENT/LAST OWNER A12 < BESSIE MORRIS (1934) >
 PRESENT/LAST OPERATOR A13 < >
 EXPL./DEV.COMMENTS L110 < >

DESCRIPTION OF DEPOSIT

DEPOSIT TYPE(S) C40 < VEIN >
 DEPOSIT FORM/SHAPE M10 < TABULAR >
 DEPTH TO TOP M20 < > UNITS M21 < > MAXIMUM LENGTH M40 < > UNITS M41 < >
 DEPTH TO BOTTOM M30 < > UNITS M31 < > MAXIMUM WIDTH M50 < > UNITS M51 < >
 DEPOSIT SIZE M15 < SMALL > M15 < MEDIUM > M15 < LARGE > (circle one) MAXIMUM THICKNESS M60 < > UNITS M61 < >
 STRIKE M70 < > DIP M80 < >
 DIRECTION OF PLUNGE M100 < > PLUNGE M90 < >
 REP. DESC. COMMENTS M110 < >

DESCRIPTION OF WORKINGS

Workings are: SURFACE M120 UNDERGROUND M130 BOTH (circle one) OVERALL LENGTH M190 < > UNITS M191 < >
 DEPTH BELOW SURFACE M160 < > UNITS M161 < > OVERALL WIDTH M200 < > UNITS M201 < >
 LENGTH OF WORKINGS M170 < > UNITS M171 < > OVERALL AREA M210 < > UNITS M211 < >
 DESC. OF WORK. COM. M220 < >

GEOLOGY

* AGE OF HOST ROCK(S) K1 < P.R.O.T. > U/PB ZIRCON EQUAL TO 1720 MILLION YEARS
 * HOST ROCK TYPE(S) K1A < QUARTZ MONZONITE >
 * AGE OF IGNEOUS ROCK(S) K2 < P.R.O.T.; T.E.R.T. > U/PB ZIRCON EQUAL TO 1720 MILLION YEARS; PROBABLE PALEOCENE - MIOCENE
 * IGNEOUS ROCK TYPE(S) K2A < QUARTZ MONZONITE; RHYOLITE PORPHYRY >
 * AGE OF MINERALIZATION K3 < CRET.-PALEO.C. >
 * PERT. MINERALS (NOT ORE) K4 < QUARTZ, PYRITE >
 * ORE CONTROL/LOCUS K5 < FAULTING, SHEARING >
 * MAJ. REG. TRENDS/STRUCT. N5 < BATHOLITH (QUARTZ MONZONITE) RATHER MASSIVE AND STRUCTURELESS >
 * TECTONIC SETTING N15 < >
 * SIGNIFICANT LOCAL STRUCT. N70 < >
 * SIGNIFICANT ALTERATION N75 < NONE >
 * PROCESS OF CONC./ENRICH. N80 < OXIDATION AT NEAR-SURFACE >
 * FORMATION AGE N30 < >
 * FORMATION NAME N30A < >
 * SECOND FM AGE N35 < >
 * SECOND FM NAME N35A < >
 * IGNEOUS UNIT AGE N50 < P.R.O.T. > AS LINE K1
 * IGNEOUS UNIT NAME N50A < CRAZY BASIN QUARTZ MONZONITE >
 * SECOND IG. UNIT AGE N55 < CRET.-PALEO.C. >
 * SECOND IG. UNIT NAME N55A < RHYOLITE PORPHYRY DIKES >
 * GEOLOGY COMMENTS N85 < MUSEUM IS VEIN SYSTEM CUTTING PROTEROZOIC QUARTZ MONZONITE. RHYOLITE PORPHYRY DIKES OF CRET.-PALEO AGE OCCUR IN DISTRICT BUT ARE NOT NECESSARILY COINCIDENT WITH VEINS >

GENERAL COMMENTS

GENERAL COMMENTS GEN < >

MUSEUM MINING GROUP

TIP TOP DISTRICT

YAVAPAI COUNTY

For information see "Report on Tip Top District"
in "Tip Top Mine" file, dated June 26, 1939, by S. J.
Clausen, Jr. ME.

Tip Top Mining District Map may be found in
map file.

MILS Sheet sequence number 0040251461