



CONTACT INFORMATION

Mining Records Curator
Arizona Geological Survey
1520 West Adams St.
Phoenix, AZ 85007
602-771-1601
<http://www.azgs.az.gov>
inquiries@azgs.az.gov

The following file is part of the

Arizona Department of Mines and Mineral Resources Mining Collection

ACCESS STATEMENT

These digitized collections are accessible for purposes of education and research. We have indicated what we know about copyright and rights of privacy, publicity, or trademark. Due to the nature of archival collections, we are not always able to identify this information. We are eager to hear from any rights owners, so that we may obtain accurate information. Upon request, we will remove material from public view while we address a rights issue.

CONSTRAINTS STATEMENT

The Arizona Geological Survey does not claim to control all rights for all materials in its collection. These rights include, but are not limited to: copyright, privacy rights, and cultural protection rights. The User hereby assumes all responsibility for obtaining any rights to use the material in excess of "fair use."

The Survey makes no intellectual property claims to the products created by individual authors in the manuscript collections, except when the author deeded those rights to the Survey or when those authors were employed by the State of Arizona and created intellectual products as a function of their official duties. The Survey does maintain property rights to the physical and digital representations of the works.

QUALITY STATEMENT

The Arizona Geological Survey is not responsible for the accuracy of the records, information, or opinions that may be contained in the files. The Survey collects, catalogs, and archives data on mineral properties regardless of its views of the veracity or accuracy of those data.

01/07/97

ARIZONA DEPARTMENT OF MINES AND MINERAL RESOURCES FILE DATA

PRIMARY NAME: MUGGINS MTNS. CLINOPTILOLITE

ALTERNATE NAMES:

MUG
JOHN
JOHN BOYLE ZEOLITE CLAIMS

YUMA COUNTY MILS NUMBER: 748

LOCATION: TOWNSHIP 8 S RANGE 19 W SECTION 23 QUARTER NW
LATITUDE: N 32DEG 43MIN 10SEC LONGITUDE: W 114DEG 11MIN 00SEC
TOPO MAP NAME: WELLTON - 7.5 MIN

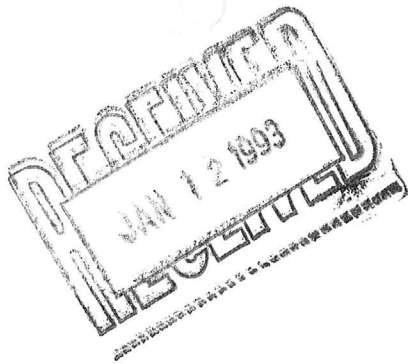
CURRENT STATUS: RAW PROSPECT

COMMODITY:

ZEOLITES CLINOPTILOLI

BIBLIOGRAPHY:

ADMMR MUGGINS MTNS. CLINOPTILOLITE FILE
EYDE, T.H., 1977, ARIZONA ZEOLITES,
ADMMR MINERAL REPORT NO. 1, P. 32.



John P. Boyle
2900 W. Highland, Apt. # 362
Chandler, AZ. 85224

(602) 491-2815

Jan. 10, 1993

Mr. Ken A. Phillips
Arizona Dept. of Mines and Minerals
Mineral Building, Fairgrounds,
Phoenix, Arizona 85007

Dear Ken;

I apologize for my delay in responding to your request for the enclosed information pertaining to the zeolite mining claims I hold in Arizona. My unrelated occupation keeps me quite busy and requires out of state travel, which caused the delay.

During the late 1980's, I prospected for, located and acquired 28 zeolite mining claims throughout Arizona. Ted Eyde's Mineral Report # I, entitled Arizona Zeolites, was extremely helpful in locating the minerals. Also, the information contained in your book Arizona Industrial Minerals proved to be a great assist. You deserve many compliments for this very important work, which takes the prospector "by the hand" and leads him right to whatever industrial mineral he is searching for in the state of Arizona.

I have abandoned many of these claims because of the high assessment fees which will become due in 1993. I do intend to file claim to a few of the more important deposits in the near future.

I have retained the Clinoptilolite claims in Yuma County, described in Mr. Eyde's book on page 32 under "The Muggins Mountains Clinoptilolite Occurrences." Claim data and topo map are enclosed.

Recently, Mr. C. Wayne Johnson, owner of Johnson Engineering located in Thermal CA. has requested shipment of a few truckloads of zeolites from these deposits. His company has just completed a pilot plant for processing zeolite minerals and have potential sales prospects, including the U.S. Dept of Agriculture for soil amendment programs and fish aquaculture.

Also, thank you for putting me in touch with Tim Whitney at Murco Wall Products. A group of his associates are interested in manufacturing consumer products from zeolite minerals and will present a joint venture plan in the near future.

I hope the enclosed information is helpful and I'll keep you informed of my progress. Thanks again.

Sincerely,

John P. Boyle

Zeolite Mining Claims

Claimant:

John P. Boyle
2900 W. Highland St., Apt.# 362
Chandler, Arizona 85224
(602) 491-2815

Location:

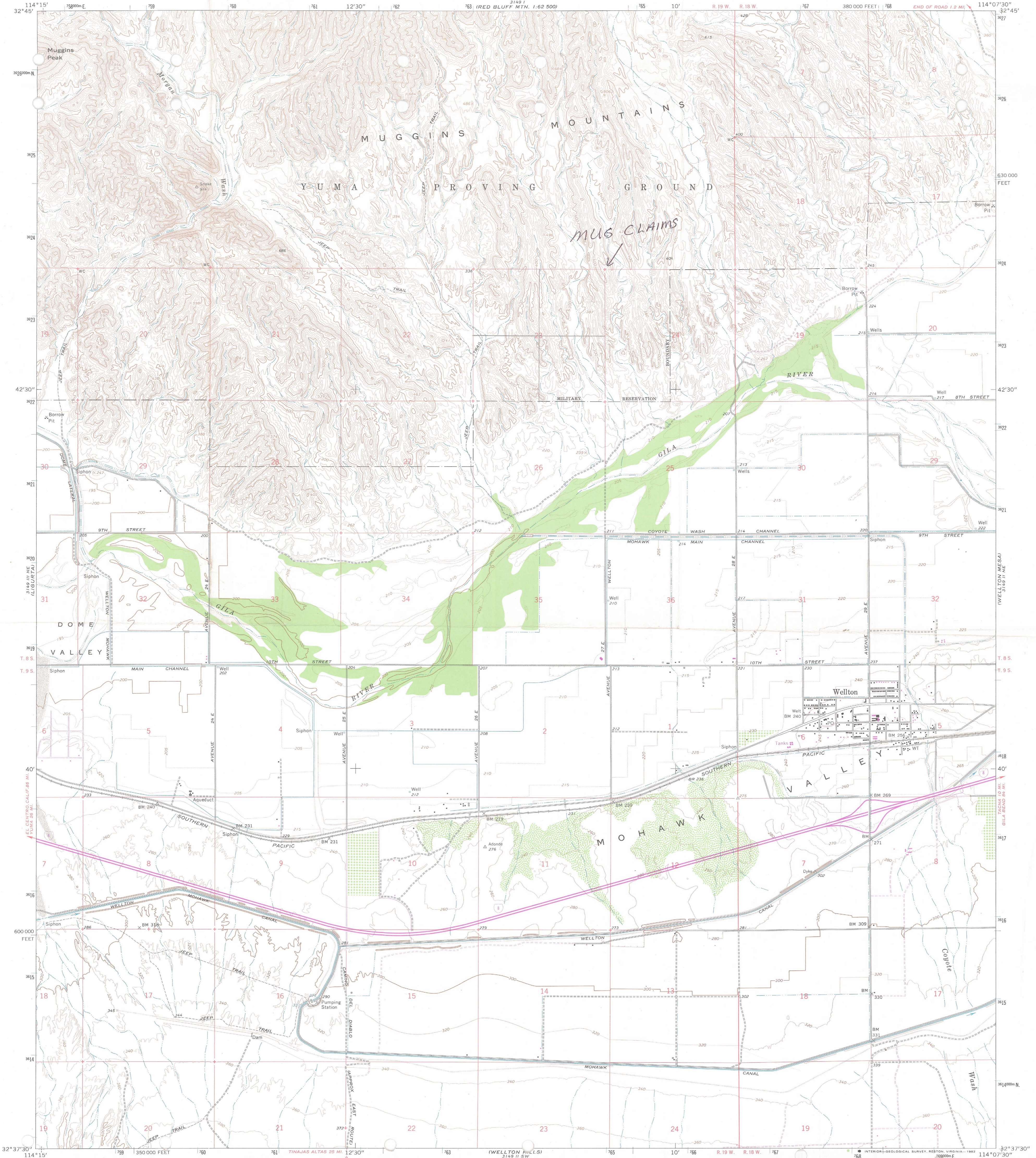
Township 8 South; Range 19 West; Section 23; GSRB&M,
Yuma County, Arizona.

Eight placer claims cover the entire Northwest Quarter of Section 23. They are entitled MUG # 1 through MUG # 8 and run in an east to west direction. All the claims are 660 feet wide and 1320 feet in length. Topographic coverage of the area is provided by the 7.5 Wellton Quadrangle.

Six lode claims have been located and filed with U.S. BLM also. They cover most of the MUG placer claims and run in a north to south direction. The names of the lode claims are JOHN # 1 through JOHN # 6 and are located in the NW $\frac{1}{4}$ also. They are 600 feet wide and 1500 feet in length.

Description:

Clinoptilolite-bearing tuff deposits occur throughout the N $\frac{1}{2}$ of Section 23 with many of the larger deposits located in the NW $\frac{1}{4}$. Many of the zeolite beds are high grade clinoptilolite. The area is described in Ted H. Eyde's book entitled Arizona Zeolites on page 32 under the heading "The Muggins Mountains Clinoptilolite Occurrences."



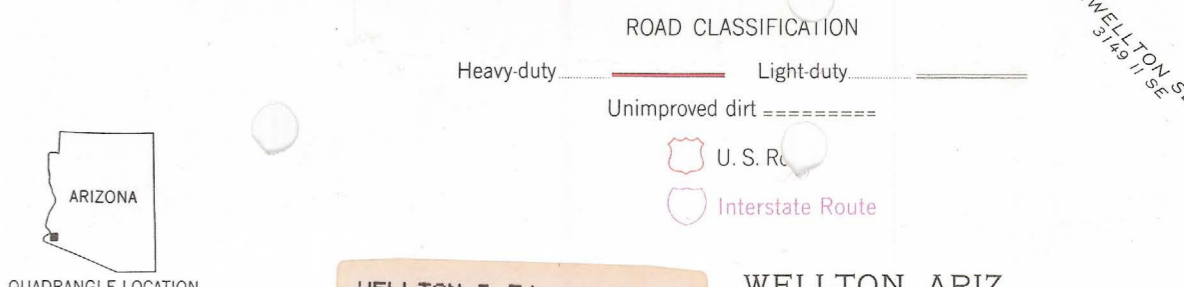
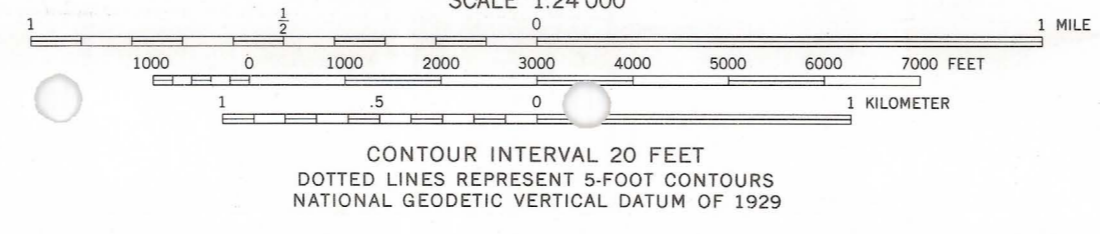
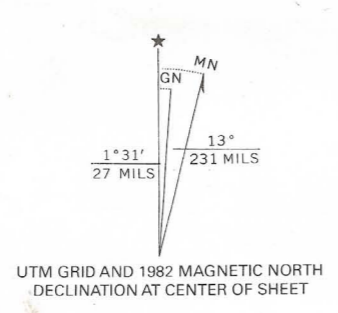
Mapped, edited, and published by the Geological Survey Control by USGS/NOAA and U.S. Bureau of Reclamation Topography by photogrammetric methods from 11 photographs taken 1962, and from planetable surveys by U.S. 1938-39 and USGS 1965

Polycyclic projection. 1927 North American datum 10,000-foot grid based on Arizona coordinate system, west zone 1000-meter Universal Transverse Mercator grid ticks, zone 11, shown in blue

To place on the predicted North American Datum 1983, move the projection lines 5 meters south and 72 meters east as shown by dashed corner ticks

There may be private inholdings within the boundaries of the National or State reservations shown on this map

Where omitted, land lines have not been established



THIS MAP COMPLIES WITH NATIONAL MAP ACCURACY STANDARDS FOR SALE BY U.S. GEOLOGICAL SURVEY, DENVER, COLORADO 80225, OR RESTON, VIRGINIA 22092 A FOLDER DESCRIBING TOPOGRAPHIC MAPS AND SYMBOLS IS AVAILABLE ON REQUEST

Revisions shown in purple compiled from aerial photographs taken 1980 and other source data This information not field checked. Map edited 1982



WELLTON, ARIZ. N3237.5-W11407.5/7.5 1965 PHOTOREVISED 1982 DMA 3149 II NW—SERIES V898

WIDE WORLD OF MAPS