



CONTACT INFORMATION

Mining Records Curator
Arizona Geological Survey
1520 West Adams St.
Phoenix, AZ 85007
602-771-1601
<http://www.azgs.az.gov>
inquiries@azgs.az.gov

The following file is part of the

Arizona Department of Mines and Mineral Resources Mining Collection

ACCESS STATEMENT

These digitized collections are accessible for purposes of education and research. We have indicated what we know about copyright and rights of privacy, publicity, or trademark. Due to the nature of archival collections, we are not always able to identify this information. We are eager to hear from any rights owners, so that we may obtain accurate information. Upon request, we will remove material from public view while we address a rights issue.

CONSTRAINTS STATEMENT

The Arizona Geological Survey does not claim to control all rights for all materials in its collection. These rights include, but are not limited to: copyright, privacy rights, and cultural protection rights. The User hereby assumes all responsibility for obtaining any rights to use the material in excess of "fair use."

The Survey makes no intellectual property claims to the products created by individual authors in the manuscript collections, except when the author deeded those rights to the Survey or when those authors were employed by the State of Arizona and created intellectual products as a function of their official duties. The Survey does maintain property rights to the physical and digital representations of the works.

QUALITY STATEMENT

The Arizona Geological Survey is not responsible for the accuracy of the records, information, or opinions that may be contained in the files. The Survey collects, catalogs, and archives data on mineral properties regardless of its views of the veracity or accuracy of those data.

PRINTED: 03/22/2002

ARIZONA DEPARTMENT OF MINES AND MINERAL RESOURCES AZMILS DATA

PRIMARY NAME: MOSS

ALTERNATE NAMES:

MOHAVE COUNTY MILS NUMBER: 511

LOCATION: TOWNSHIP 20 N RANGE 20 W SECTION 19 QUARTER S2
LATITUDE: N 35DEG 05MIN 56SEC LONGITUDE: W 114DEG 26MIN 50SEC
TOPO MAP NAME: OATMAN - 7.5 MIN

CURRENT STATUS: PAST PRODUCER

COMMODITY:

GOLD LODE

SILVER

FLUORINE FLUORSPAR

BIBLIOGRAPHY:

ADMMR MOSS MINE FILE
ADMMR KINGMAN MINING PROJECT MAPS
MAPS - U/G ASSAYS & CLAIMS (ADMMR AZBM FILE)
RANSOME, F.L. USGS BULL 743, P 46-48
SCHRADER, F.C. USGS BULL 397, P 43, 170-172
AZ MNG JNL 9/12 P 22, 12/21 P 16
LAUSEN, C. AZBM BULL 131, P 9,12,44-45,52,60,
74,84-85,113-115
CUNNINGHAM & BUTLER, AZBM BULL 137, P. 94
AIME TRANS. VOL. LVI (1916) 1917, P. 208, 226
GARDNER, E.D., USGS IC 6901, P. 39
GRT BASIN GEM JT VNTR, VOL 6 (ADMMR GEO FILE)
MALACH,R "ADVNTN-JOHN MOSS" P 5,16,18;"MOHAVE
CTY PLACE NMS" P 30;"HUALAPAI MTNS" P 9
ELSING, M.J. "AZ MTL PROD" AZBM BULL 140, P96
HAYES,C.W."CONTRIBUTIONS TO ECONOMIC GEOLOGY'
USGS BULL. 340, P. 57-8; 1907

09/09/85

ARIZONA DEPARTMENT OF MINES AND MINERAL RESOURCES FILE DATA

PRIMARY NAME: MOSS

ALTERNATE NAMES:

MOHAVE COUNTY MILS NUMBER: 511

LOCATION: TOWNSHIP 20 N RANGE 20 W SECTION 19 QTR. S2
LATITUDE:N 35DEG 05MIN 56SEC LONGITUDE:W 108DEG 26MIN 50SEC
TOPO MAP NAME: OATMAN - 7.5 MIN

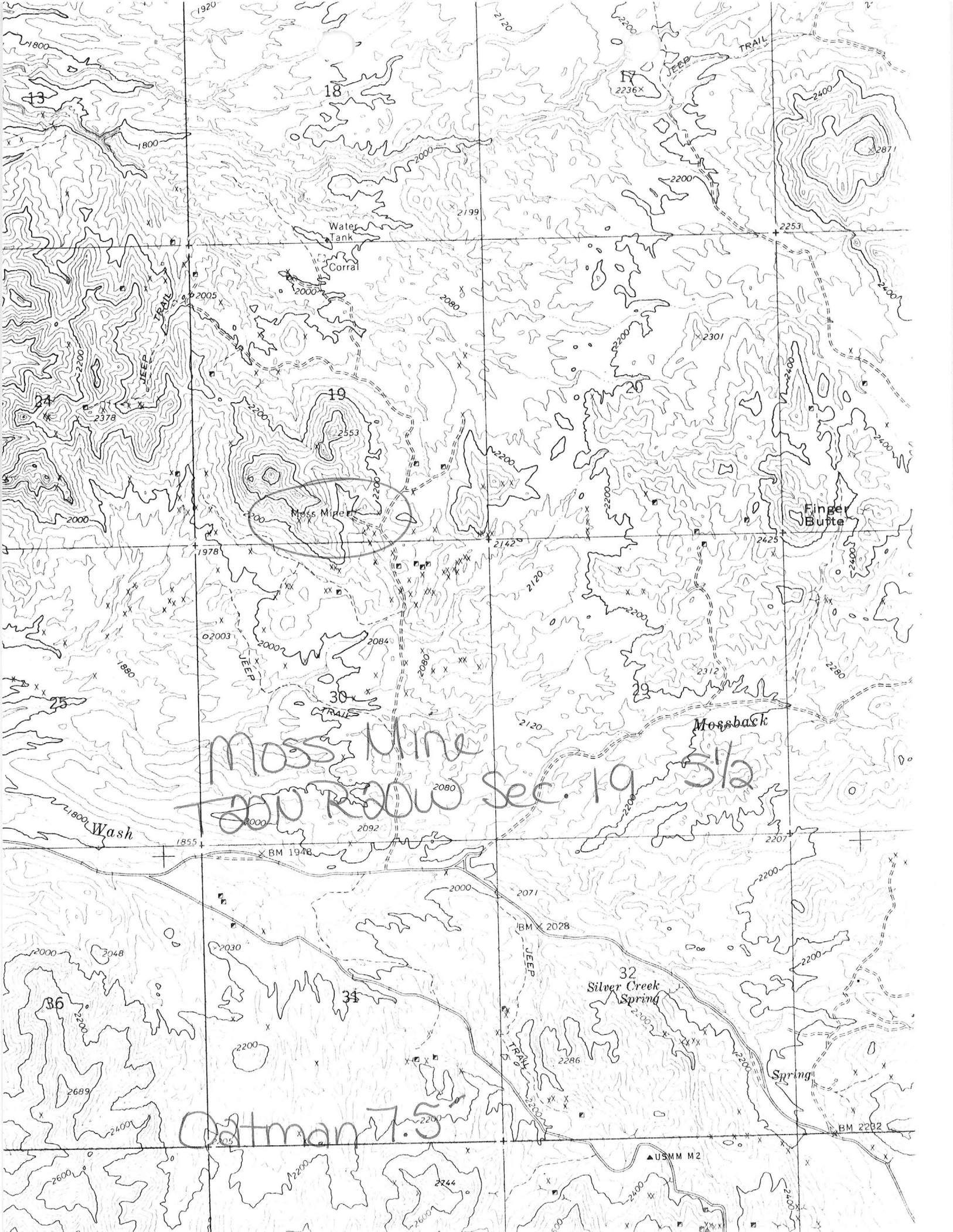
CURRENT STATUS: PAST PRODUCER

COMMODITY:

GOLD-(M) LODE-PRIMARY
SILVER-COPRODUCT
FLUORINE-(M) FLUORSPAR-BYPROD.

BIBLIOGRAPHY:

USGS OATMAN QUAD
ADMR HOUSEHOLDER MAP
BLM DISTRICTR MAP
ADMR MOHAVE CARD FILE
RANSOME, F.L., USGS BULL 743, P. 46-48
SCHRADER, F.C., USGS BULL 397, P. 43, 170-172
ADMR MOSS MINE FILE
CUNNINGHAM & BUTLER, AZBM BULL 137, P. 94
LAUSEN, C., AZBM BULL 131, P. 9, 12, 44-45,
52, 60, 74, 84-85, 113-115
SCHRADER, F.C., AIME TRANS. 1917, P. 208, 226
GARDNER, E.D., USGS IC 6901, P. 39
GREAT BASIN GEM JOINT VENTURE, VOL. 6 (ADMMR GEOLOGY FILE)
MALACH, ROMAN "ADVENTURER-JOHN MOSS" p 5,16,18; "HUALAPAI MTNS", p.9;
MOHAVE COUNTY PLACE NAMES" p. 30
MAPS - underground map showing assays & claims with mining sites
(ADMMR AZBM Rolled file boxes)
KINGMAN MINING PROJECT - 1 claim map; 1 u/g plan & section map;
7 u/g section maps; 1 misc u/g map
AZ Mining Journal, September 1917, p. 22; December 1921, p. 16
Elsing, Morris J., AZBM Bull. 140, p. 96 "Arizona Metal Production"
Hayes, C.W., "Contributions to Economic Geology" 1907, USGS Bull. 340,
p. 57-8



Moss Mine
Top Row Sec. 19 5/2

Oatman 7.5

Moss Mine

Finger Butte

Silver Creek Spring

Spring

Water Tank

Corral

Mossback

Wash

TRAIL

TRAIL

TRAIL

TRAIL

TRAIL

TRAIL

TRAIL

TRAIL

TRAIL

TRAIL

TRAIL

TRAIL

TRAIL

13

18

19

20

30

29

31

36

32

1920

2120

2200

1800

1800

2000

2200

2400

2253

2005

2080

2199

2200

2301

2400

24

2378

2200

2553

2200

2200

2400

2000

1978

2000

2000

2142

2200

2425

25

1880

2003

2000

2084

2080

2120

2200

2400

1800

1855

BM 1948

2080

2092

2130

2200

2280

2000

2048

2030

2000

2071

2200

2200

2689

2400

2200

2200

2071

BM 2028

2200

2200

2600

2400

2200

2200

2744

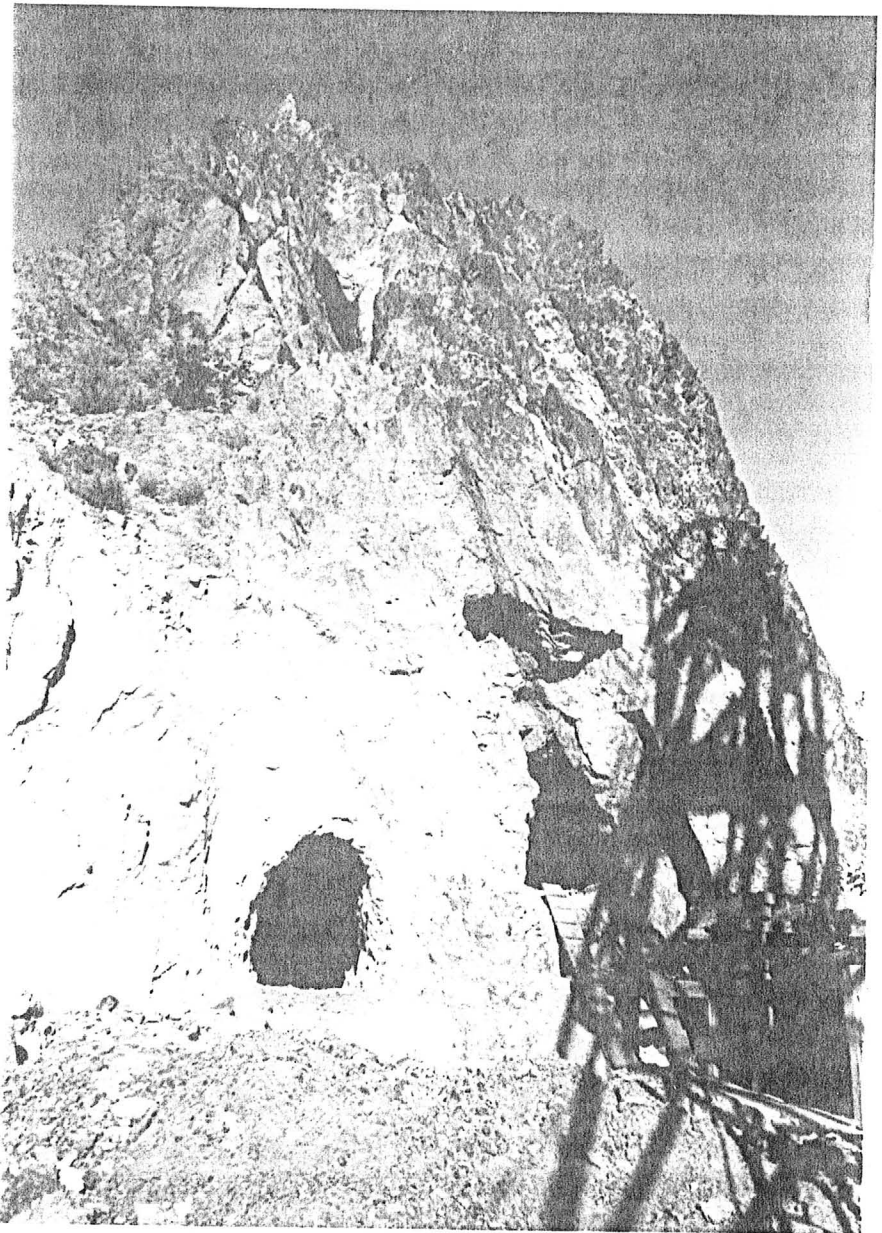
2100

2100

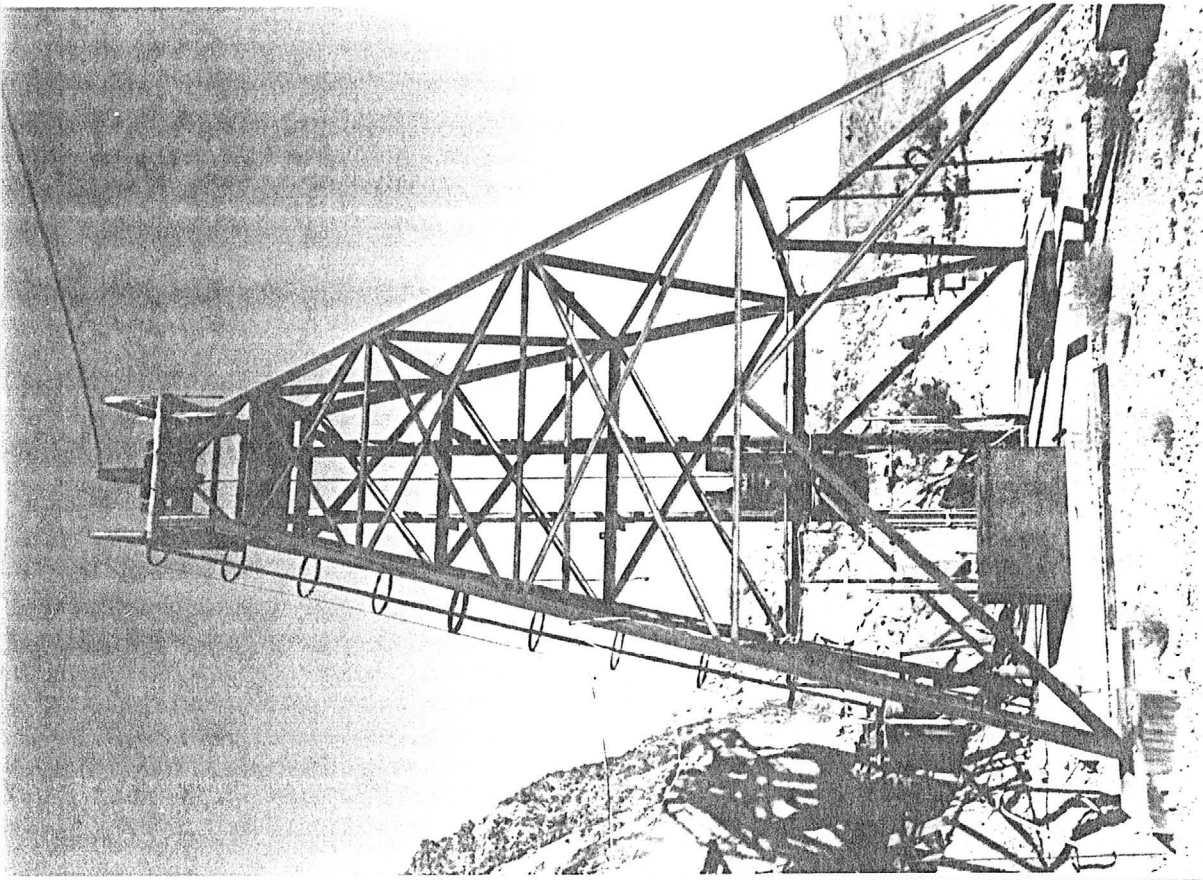
2400

USMM M2

BM 2282

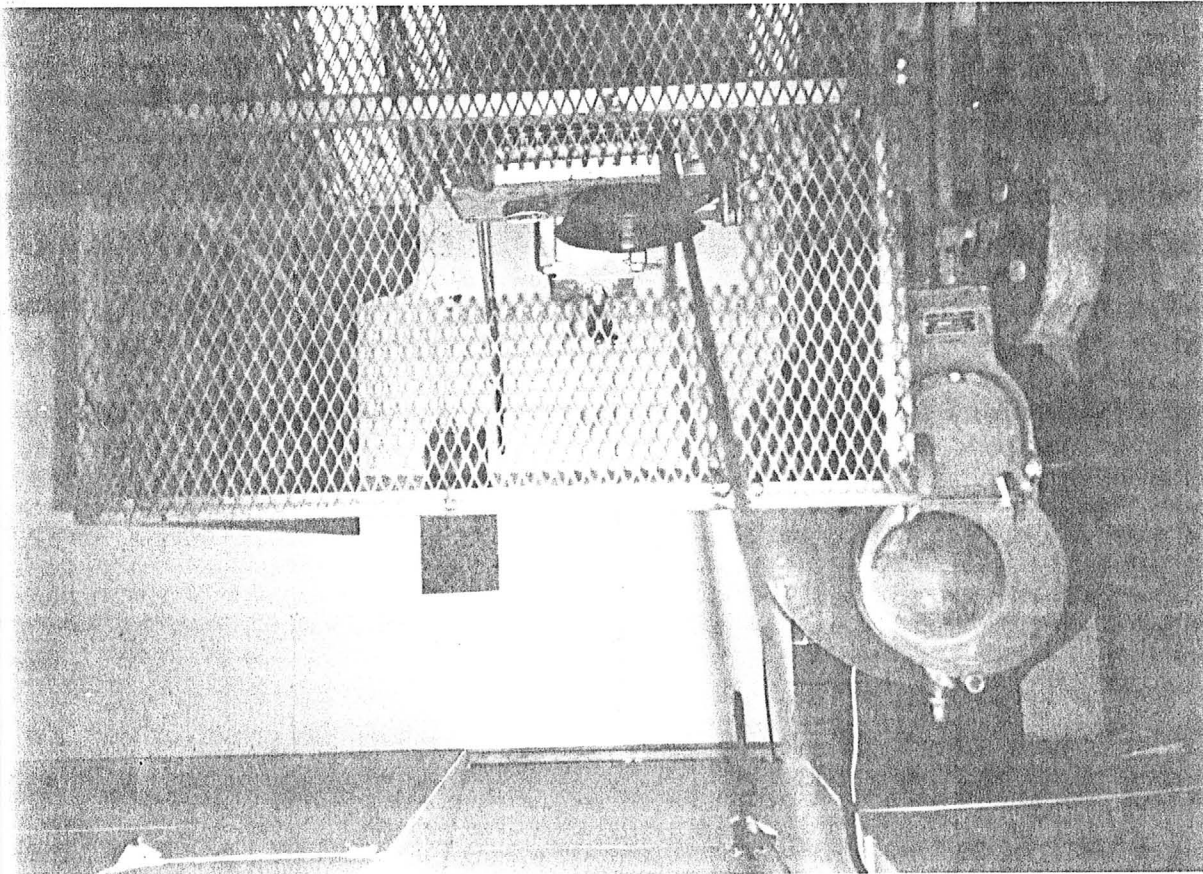


A-128-90 (1989)



1986

A-180-51



A-120-52

Arizona Department of Mines and Mineral Resources

INFORMATION FROM MINE CARDS IN MUSEUM

ARIZONA

Mohave County

MM-5669 Flourite and Calcite
crystals

Moss mine

MM-K159 Gold ore

MILS # 51-I

O-AKA'S

Moss Mine (file)

MOSS MINE

MOHAVE COUNTY

NJN WR 4/1/88: F. H. McQuiddy reported that problems at the Tyro Mille (Tyro Mine - file) Mohave County have temporarily halted Harrison Mining (card) milling activity there and their mining activity at the Moss (file) Mohave County. He estimated that less than 5000 tons have been produced. The reported problem was in the grinding circuits.

NJN WR 6/17/88: Bill Vanderwall (card) reported that Bill Snack, a Reno, Nevada casino owner, has been financing the development work at the Moss Mine (file) Mohave County. Lease terms to acquire the property this spring consisted of \$50,000 down plus a small monthly minimum and a NSR on production.

MOSS [REDACTED]

MOHAVE COUNTY

NJN WR 5/15/87: Francis McQuiddy, Quest Mining Corp, 6991 E. Camelback, Scottsdale, Arizona 85251, 941-3092, a consultant representing BF Minerals (card) has leased the Moss [REDACTED] (file) Mohave County to Harrison Mining. They have dewatered the mine and are now rehabilitating the underground workings. He estimates that they are a couple of months away from production. The ore will go to the Tyro Mill (file) Mohave County, which they have leased.

MOSS MINE

MOHAVE

Mr. Chester F. Millar, of C.F. Millar Limited, 1758 West 8th Avenue, Vancouver 9, B.C., drilled a 70' section that ran 0.04 oz/ton in gold. KAP Report dated 8/13/73

A Jerry Williams, Prescott, was in to discuss the old Moss Au mine N of Oatman. It was suggested he contact Lloyd Moss in Oatman for an examination of the property. He said the Henrietta Mining Co, Ltd. of Vancouver, B.C., had contacted the owners for an option to purchase. He was cautioned about tying the property up too long on an option also several suggestions were made regarding checking the quantity and value of the ore milled. GW WR 12/30/74

JHJ Memo 6/19/80: Joe Strutzel looked at Moss Mine (near Oatman) file for a consultant that has a Canadian client.

NJN WR 4/29/83: It was reported from a reliable source that the Moss Mine, Mohave County, was sold a few years ago to a gentleman from Texas. During the last two years an exploration outfit from Salt Lake City was employed to do exploratory drilling on the property. The results have been favorable and more drilling is currently planned.

NJN WR 3/13/87: Harrison Mining (c) has leased the Moss Mine (file) and the mill at the Tyro Mine (file) Mohave County. It is rumored that Homestake would like to have leased the Moss Mine. Recent work done there indicates a possible 200,000 tons of .17 oz/ton Au. Harrison is currently revamping the shaft and planning a drilling program to confirm that resource.

NJN WR 1/22/88: Bill VanDerWall (card) Ivy Minerals, reported that the Harrison Mining (card) is mining at the Moss Mine (file) Mohave County at 10 day intervals and then running the Tyro (file) Mill, Mohave County for 3 or 4 days. They have been doing this for the last few months and have milled 3,000 tons. The Moss Mine shaft has been rehabilitated, is currently at the 300 foot level and most of the mining has been taking place at that level. The vein on this level is 40' wide and contains .25 oz/ton Au. There is a major fault to the west but the vein is open to the east. Current reserve estimates would be 40,000 tons of greater than .1 underground. This could conceivably become 80,000 tons or greater.

Department of Mines and Mineral Resources
MINE AND PROSPECT FIELD VISIT DATA SUMMARY

Sheet 1 of 2

COMMODITIES: Gold, Silver

MILS ID No.: Mohave 51 I

DATE: 4-6-89

ENGINEER: Nyal Niemuth and Ken Phillips

INFORMATION FROM:

PROPERTY SUMMARY

I. MINE NAME: Moss

OTHER POSSIBLE NAMES
INCL. ANY CLAIM NAMES NOTED:

II. LOCATION: T 20 N R 20 W SEC(S): 19 MINE DISTRICT

ELEV.: COUNTY Mohave TOPO QUAD. Oatman 7.5

DIRECTIONS: As per topo

MAP ATTACHED

III. OWNERSHIP: NAME ?

PHONE:

ADDRESS:

COMPANY NAME IF ANY:

PERTINENT PEOPLE:

IV. PROPERTY AND HOLDINGS: ?

V. PAST PRODUCTION-NOTED, KNOWN, PROBABLE, UNKNOWN, NONE: Noted

VI. CURRENT STATUS: Inactive but recently rehabilitated 1-88

VII. WORKINGS: Decline to East - apparently recent for rubber tire equipment 6' x 8' in size. New collar has been installed and 2 compartment 6' x 8' shaft rehabilitated with 3' x 8' manway. New steel headframe and hoist houses erected. All in tact with watchman at camp. Workings, not entered as watchman not at site.

Sheet 2 of 2

VIII GEOLOGY AND MINERALOGY: DEPOSIT TYPE: Vein

LENGTH: ? WIDTH + 20 VEIN STRIKE N10E DIP 70E

HOST ROCK: Tertiary volcanic andesites

ECONOMIC MINERALS: Gold with quartz, calcite and adularia gangue

COMMENTS: A second vein 3-4' thick striking - N20W dipping steeply east intersects the other vein at the shaft.

IX. EQUIPMENT ON SIGHT: Hoist, headframe, hoist house and 1 shed/shop building, generator, compressor.

X. SAMPLING: NOTE TYPE IF ANY, DRILLING? No

XI. REFERENCES AND REMARKS:

LOCATION

The Moss Mine Gold Project is located eight miles northwest of the Gold Road Mine. The proximity of the Moss Mine to the Gold Road Mine offers many commercial advantages. Higher-grade ores can be custom milled and logistical services can be shared with existing staff at the Gold Road Mine.

DEVELOPMENT

Several mining companies drilled a total of 120 holes and developed a geological resource. Addwest acquired an option-to-purchase the property in 1994 subject to a 3.5% to 4% net smelter royalty.

During 1995, Addwest staked 120 federal lode-mining claims around the core block of the Moss property for a total area of approximately 2,200 contiguous acres.

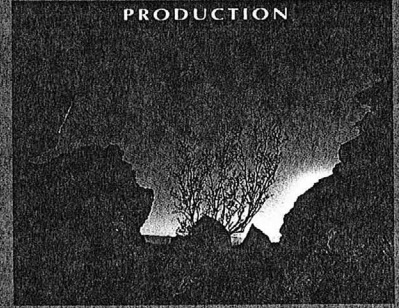
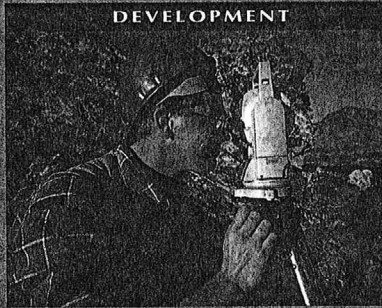
MOSS MINE PROFILE

Ownership:	100% Addwest Minerals, Inc.
Status:	Reserve delineation / Feasibility studies
Geology:	High-grade veins and stockworks within Tertiary-age volcanic rocks
Land Position:	2,200 acres
Mining Method:	Open pit and underground
Processing Method:	Heap Leach and Milling
Estm. Prod. Rate:	50,000 ounces of gold per year
Estm. Operating Costs:	US\$230 / gold ounce
Estm. Capital Costs:	US\$9 million
Investment to Date:	US\$2.5 million
Current Resources:	7,400,000 tons grading 0.38 Oz gold per ton for 281,200 ounces
Potential:	Three-fold increase
Current Work Focus:	In-fill and expansion drilling and metallurgical studies

In 1996, Addwest upgraded the resource at the Moss Mine Gold Project by completing 2 phases of drilling (12,000 feet in 38 holes). The results of this drilling demonstrate a continuous stockwork zone extending to at least 400 feet below the surface. Current resource estimates are 7.4 million tons grading 0.038 ounces per ton or 281,000 ounces. A significant portion of these tons are greater than 0.1 ounces per ton.

EXPLORATION

In 1997 metallurgical studies and in-fill drilling will be conducted to verify the feasibility of an open-pit heap-leach facility and segregation and shipping of the high-grade ores to the Gold Road mill. Baseline environmental studies will be conducted as we begin permitting.



"In 1996, Addwest upgraded the resource at the Moss Mine Gold Project by completing 2 phases of drilling"



"Prospects to Profits"

CORPORATE OBJECTIVES

Addwest Minerals International, Ltd. is an aggressive gold mining company whose primary objective is to create wealth for its stockholders through the discovery, development and production of gold. The company was recently reorganized by a team of seasoned mining executives with a proven track record. Over the past eleven years this team has successfully brought four mines into production and discovered three world-class deposits hosting in excess of ten million ounces of gold. In 1996, the "new" Addwest Minerals produced close to 40,000 ounces.

The successful commissioning of the Gold Road Mine marked the "new" company's first step in generating cash flow that will fund business development and corporate overhead. The next step is to raise sufficient new capital to:

- 1) expand reserves at each project;
- 2) fund new acquisitions that fit the project profile of the company.

Simultaneously, feasibility and permitting studies will be completed to expedite production decisions on advanced-stage projects. A third objective is to continually optimize each operation to ensure consistent and sustainable production growth.

MANAGEMENT RECORD

RECENT

- Management buy-out of Addwest Minerals, Inc. (a subsidiary of Addington Resources, Inc.) at a deep discount.
- Achievement of profitable production at Gold Road within four months after its acquisition in early 1996.
- Transformation of Addwest Minerals, Inc. into a Canadian-incorporated and listed (VSE) company.

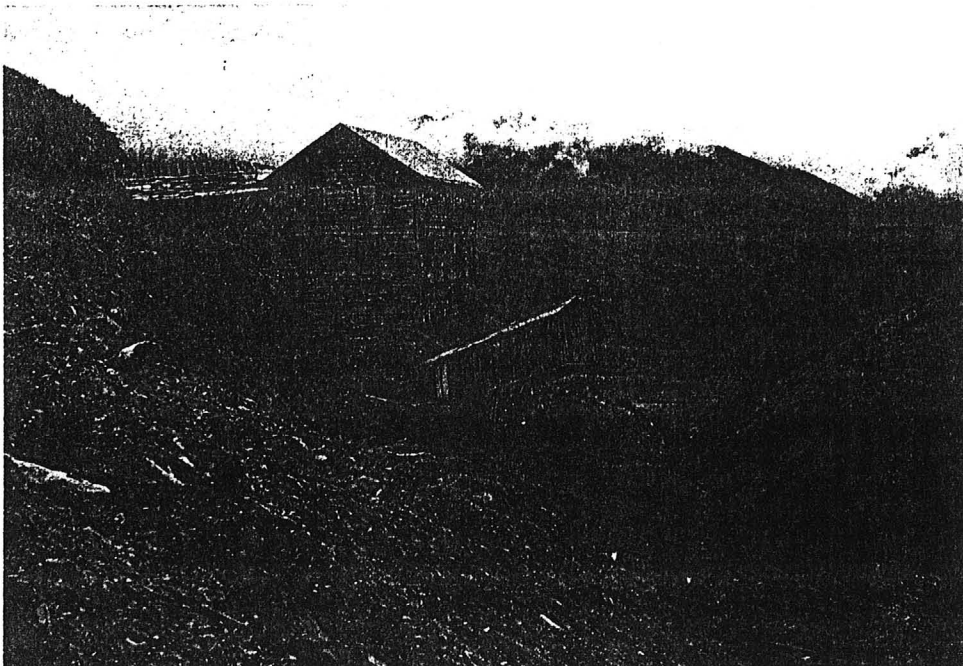
HISTORICAL

- Development and construction of four mines in 11 years: Portland gold mine, Arizona (1985); Northumberland, Nevada (1985); Kendall, Montana (1988); and Gold Road Mine, Arizona (1996)
- Gold deposits discovered by Addwest (private company) staff: Kendall gold mine, Montana*; Briggs gold mine, California*; McDonald Meadows gold deposit, Montana*; and 7-Up Pete gold deposit, Montana*

* Sold to Canyon Resources Corporation in 1990

RESOURCE SUMMARY

Project	Tonnage (ST)	Gold Grade (Oz/ST)	Contained Gold (Oz)
Proven and Probable Reserves			
Gold Road, AZ	524,000	0.234	120,000
Drill Indicated Resources			
Golden Zone, AK	6,560,000	0.103	675,000
Moss, AZ	7,400,000	0.038	281,000
Total:	13,960,000	0.069	956,000
Additional Potential to be tested			
Gold Road, AZ	3,500,000	0.234	800,000
Golden Zone, AK	Substantial		
Moss, AZ	Substantial		



Historic Golden Zone Mill

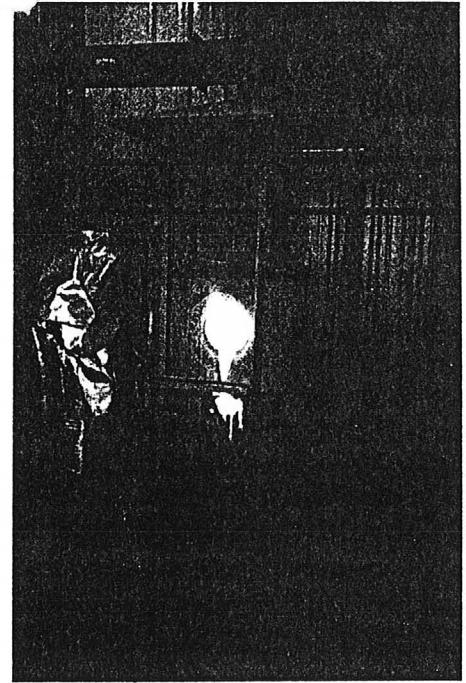
GOLD ROAD MINE

Gold Road Mine is located in the heart of the historic Oatman district in Arizona, which has produced in excess of two million ounces of gold. Addwest's predecessor company acquired an option on the property in 1991 and proceeded to stake additional claims, rehabilitate historic underground workings, permit the operation and build a new mill. Modern production began in 1995. Production in 1996 is expected to approach 40,000 ounces at a cash operating cost of US\$230 per ounce.

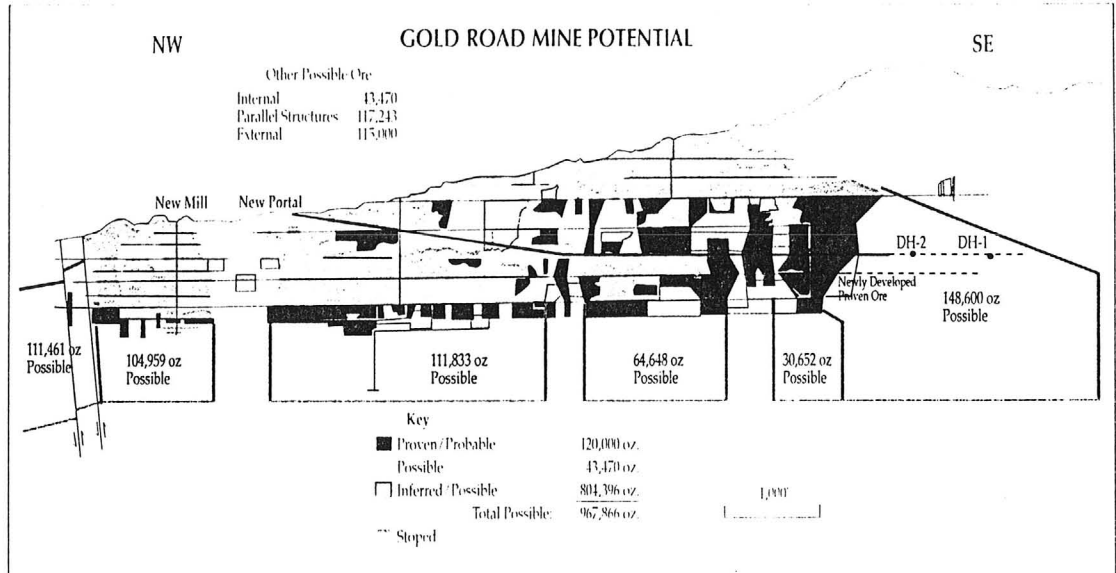
Gold Road is currently processing 500 tons of ore per day, seven days per week, with three shifts per day in both the mine and the mill. An aggressive exploration and development program to extend existing workings to newly-discovered ore zones that will lengthen the mine's life is underway. The Moss Mine Gold Project was acquired in 1994 as a result of further exploration in this promising district.

GOLD ROAD MINE PROFILE

Ownership:	100% Addwest Minerals, Inc.
Status:	Producing operation, fully permitted
Geology:	High-grade gold veins within Tertiary-age volcanic rocks
Land Position:	2,366 acres
Mining Method:	Modified underground shrinkage stope
Processing Method:	500 TPD Agitated CIP mill with electrowinning and smelting
Recovery Rate:	94% gold and 50% silver (Average 1996)
Current Prod. Rate:	40,000 ounces gold per year
Estm. Operating Cost:	US\$230 / gold ounce
Investment to Date:	US\$ 25 million (by prior owners)
Current Reserves:	524,000 tons grading 0.234 Oz gold/ton for 120,000 ounces
Potential:	Five-fold increase
Current Work Focus:	Expand and upgrade existing resources through in-fill confirmation drilling. Additional underground development to access and extend known ore zones



Gold pour at Gold Road



MOSS MINE GOLD PROJECT

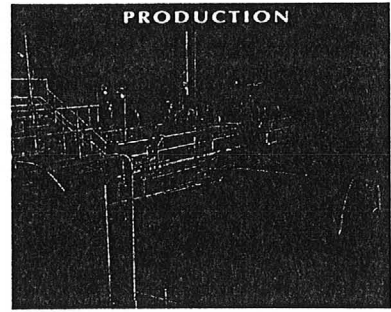
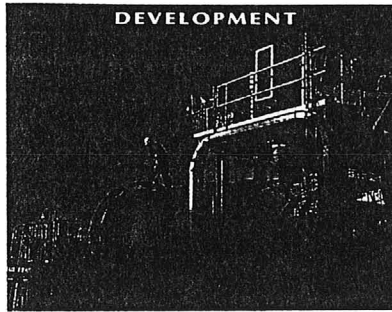
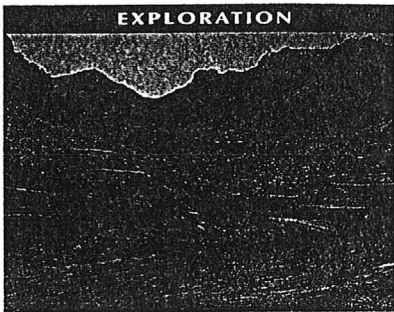
The Moss Mine Gold Project is located eight miles northwest of Addwest's Gold Road Mine. It has the potential to add low-cost, open pit, heap leach reserves, as well as high-grade millable gold ores. Preliminary estimates indicate that the property contains resources of more than seven million tons near the surface, which Addwest expects to convert into mineable reserves.

In 1996, the "new" Addwest upgraded the reserve certainty of Moss Mine by completing

15,000 feet of drilling and extensive metallurgical sampling. A continuous stockwork zone extending to 400 feet below the surface has been confirmed. Significant drill intercepts with increasing depth include: 140 feet grading 0.042 Oz Au/ST, 250 feet grading 0.051 Oz Au/ST, 95 feet grading 0.152 Oz Au/ST and 190 feet grading 0.034 Oz Au/ST. An economic pre-feasibility study on this project will be completed in 1997.

MOSS MINE GOLD PROJECT PROFILE

Ownership:	100% Addwest Minerals, Inc.
Status:	Reserve delineation / Feasibility studies
Geology:	High-grade veins and disseminated gold hosted within Tertiary-age volcanic rocks
Land Position:	2,100 acres
Mining Method:	Open pit and underground
Processing Method:	Heap leach, milling
Estm. Prod. Rate:	50,000 ounces gold per year
Estm. Operating Cost:	US\$230 / gold ounce
Estm. Capital Cost:	US\$9 million
Earliest Poss. Prod.:	1998
Investment to Date:	US\$2.5 million (by prior owners)
Resources:	7,400,000 tons grading 0.038 Oz gold/ton for 281,200 ounces
Potential:	Two-fold increase
Current Work Focus:	In-fill and expansion drilling and metallurgical studies



OTHER MINERAL PROJECTS

Mt. Selwyn Gold-Silver Project, Omineca division, British Columbia, Canada hosts a large gold-bearing deposit within Cambrian quartzites. Historic reports indicate that the gold is free-milling and the deposit is amenable to open pit mining.

Tibbitt Lake Gold Project, Northwest Territories, Canada hosts multiple gold-bearing

quartz veins within metavolcanics and meta-sediments. Previous sampling returned gold values in excess of one ounce per ton in a regional area with known gold occurrences.

Wind Mountain Project is a large nepheline-syenite deposit located in Otero County, New Mexico. The project offers a 100-year mine life at a

100,000-tons-per-year production capacity. Mine permitting has been completed and permitting for the mill is underway. Prior owners invested US\$1.8 million in Wind Mountain and another \$5 million is anticipated to place it into production. Marketing studies in the fillers and extenders industries are underway for this high-grade product.

OFFICERS AND CORPORATE INFORMATION

Charles S. Williams
President

William J. N. Buchan
Chief Financial Officer

Alan Founie
V. P. Exploration

Charles W. Dalrymple
V. P. Contract and Land Acquisitions

Ronald R. Short
V. P. Operations

EXECUTIVE OFFICE

Addwest Minerals International, Ltd.
5460 Ward Road
Suite 202
Arvada, Colorado 80002 USA
Phone (303) 424-5134
Fax 425-7497

GOLD ROAD MINE OFFICE

Addwest Minerals, Inc.
P. O. Box 869
Oatman, Arizona 86433 USA
Phone (520) 768-1600
Fax (520) 768-2277

MISSION STATEMENT

Addwest Minerals International, Ltd. will continue its growth of production and low-cost reserves through its aggressive exploration and development programs, participation in joint ventures, and strategic acquisitions. In implementing its business strategy, the Company continues to focus on:

- Achieving consistent, sustainable production growth.
- Expanding its reserves through exploration of current properties and acquiring new high-quality prospects.
- Maintaining cash costs of production below the industry average.
- Maintaining a proactive program of environmental protection and workplace safety.
- Providing employees with opportunities for professional growth and compensation which is competitive and closely linked to the Company's performance.

TYRO (1) MOD (1) MB

ARIZONA DEPARTMENT OF ENVIRONMENTAL QUALITY

EVAN MECHAM, GOVERNOR
GERALD H. TELETZKE, PH.D., DIRECTOR

JOINT NOTICE OF PROPOSED ACTION

by the

U. S. Environmental Protection Agency
Region 9 (W-5-1)
215 Fremont Street
San Francisco, CA 94105

State of Arizona
Arizona Department of Environmental Quality
2005 North Central Avenue-Room 300
Phoenix, AZ 85004

Telephone: (415) 974-8105

Telephone: (602) 257-2270

On Application for National Pollutant
Discharge Elimination System (NPDES)
Permit to Discharge Pollutants to
Waters of the United States

On Application for Certification
for Compliance with Applicable
Effluent Limitations and
Appropriate Requirements of the
State of Arizona

The Environmental Protection Agency (EPA), Region 9, San Francisco, California, and the Arizona Department of Environmental Quality (ADEQ) are jointly issuing the following notice of proposed action under the Clean Water Act (CWA).

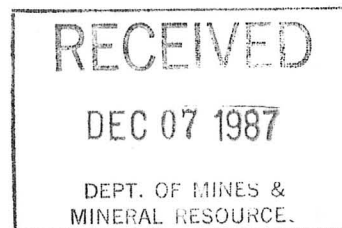
The Environmental Protection Agency, Region 9, San Francisco, California, has received a complete application for a National Pollutant Discharge Elimination System (NPDES) permit and has prepared tentative determinations regarding the permit.

On the basis of preliminary review of the requirements of the Clean Water Act, as amended, the implementing regulations, the Regional Administrator, Region 9 Environmental Protection Agency, proposes to issue an NPDES permit to discharge to the following applicant, subject to certain effluent limitations and special conditions.

Public Notice No. 29-87-AZ

December 7, 1987

Harrison Mining
P. O. Box 1116
Bullhead City, Arizona 86442
NPDES Permit No. AZ0022187



The Department of Environmental Quality is An Equal Opportunity Affirmative Action Employer

The applicant operates the waste control facilities located at the Tyro Mill near Bullhead City in Mohave County. These waste control facilities are required to contain the runoff from 3.22 inches of rainfall in 24 hours and all process generated wastewater. The discharge from this facility, at latitude 35° 13' 25" N, longitude 114° 27' 50" W, is to an unnamed wash tributary to the Colorado River. This segment of the Colorado River has protected uses of Aquatic and Wildlife, Domestic Water Source, Full Body Contact, Agriculture Irrigation and Agriculture Livestock Watering. The proposed permit contains effluent limits for Copper, Zinc, Lead, Mercury, Cadmium, Cyanide and pH. The permit will expire five years after it becomes effective.

The State of Arizona is considering a request to certify the discharge described above, pursuant to Section 401 of the Clean Water Act. The certification will set forth any limitations and monitoring requirements necessary to assure compliance with water quality standards under Section 303, areawide waste treatment management plans under Section 208(e), effluent limitations under Sections 301 and 302, standards of performance under Section 306, or prohibitions, effluent standards or pretreatment standards under Section 307 of the CWA, and any other appropriate requirement of State law.

The State may certify a draft permit and specify conditions which are more stringent than those in the original draft permit, where the State finds such conditions necessary to meet the requirements of the CWA. For each more stringent condition, the certifying State agency shall cite the CWA or State law references upon which that condition is based. Review of appeals of limitations and conditions attributable to State certification shall be made through the applicable procedures of the State.

The Administrative Record, which includes the application, draft permit conditions and other relevant documents, is available for public review Monday through Friday from 9:00 a.m. to 4:00 p.m. at the EPA address below. A copy of the draft permit and other pertinent documents may be obtained by calling or writing to the addresses below.

Persons wishing to comment upon or object to the proposed determinations or request a public hearing pursuant to 40 CFR 124.12 should submit their comments or request in writing within thirty (30) days from the date of this notice, either in person or by mail to:

U. S. Environmental Protection Agency
Region 9 (W-5-1)
Attn: Andrew Lincoff
215 Fremont Street
San Francisco, CA 94105

State of Arizona
Arizona Department of Environmental Quality
Attn: Wayne H. Palsma - Room 300
2005 North Central Avenue
Phoenix, AZ 85004

Telephone: (415) 974-8284

Telephone: (602) 257-2270

All comments or objections submitted within thirty (30) days from the date of this notice will be considered in the formulation of the final determinations regarding the application. If the response to this notice indicates a significant degree of public desire for a public hearing, the Regional Administrator shall hold one in accordance with 40 CFR 124.12. A public notice of such hearing will be issued at least thirty (30) days prior to the

hearing. A request for a public hearing shall be in writing and shall state the nature of the issues proposed to be raised in the hearing.

The permit will become effective thirty-three (33) days following the date of mailing by the EPA of the final permit. If no comments request a change in the draft permit, the permit will become effective three (3) days from the date of mailing.

A request for an evidentiary hearing may be submitted to the Permits Record Coordinator, (W-5-1), within thirty-three (33) days following the mailing of the final determination, in accordance with 40 CFR 124.74. If granted, applicable provisions of the permit will be stayed pending the hearing.

Please bring the foregoing notice to the attention of all persons you know would be interested in this matter.

Moss (A)

March 9 / 1987

74310034

Hamm

State Mine Inspector
1624 W Adams
Phoenix Arizona 85007

STATE MINE INSPECTOR

MAR 12 1987

Dear Sir;

This letter is to notify you that we would like to commence a mining operation at the Moss mine in Mohave County, Arizona. The mine is located about half way between Optima and Bullhead City on the Silver Creek Road.

Our intent is to open the Moss shaft and verify drill hole logs and old company records. We would like to meet with Dave Hamm as soon as possible to begin underground work.

To date we have poured a concrete collar around the shaft and are constructing a hoist room and dry. Our Engineer is currently designing a 45' head frame.

Thank you very much and we are looking forward to working with Mr. Hamm.

Errol Harrison

Paul Harrison

MINEF - SPECIMEN FOR DEPARTMENT OF LITHOLOGY AND ARCHIVES

K159

(Do not write in this space)

(Wrap each specimen separately, or place it in a substantial bag, by itself, with a number attached, identical with the number on this card.)

Ore _____

Cabinet _____

No. _____

Specimen No. 10, collected by Robert E. Morrow
Field Engineer

Name of ore Gold

Operator W. S. Hellier

Minerals contained _____

Mine active or inactive Active

Gangue _____

If inactive, when operated _____

Depth at which taken 300 ft.

Specimen presented by _____

Approximate mineral content (in terms of average per ton) \$15.00 per ton
\$1000. per ton.

Date Aug 15, 1940

Name of mine or claim Moss Mine

Notes (Any general information regarding the history of the property.)
This property has a width of 80 feet.

Group _____

District Oatman

Location (distance and direction by highway from what town) _____

If more space is desired for notes, use other side.

Owner of property _____

This specimen is now in the ADMR Museum (see the K number).

DEPARTMENT OF MINERAL RESOURCES
STATE OF ARIZONA
FIELD ENGINEERS REPORT

Mine Moss Mine

Date December 19, 1957

District San Francisco Dist. Mohave Co

Engineer Lewis A. Smith

Subject: Visit to the Property

Location: Sec. 13, T 20 N, R 21 W, 7 miles NW of Oatman and 2 miles north of Silver Creek.

Owners: W. H. Hittson and James McCarthy, Oatman, Arizona

Production: Reported to be about \$240,000 from near the surface.

Work: The Moss Vein was developed by a 230' shaft, around 750' of workings, 900' of tunnel and several irregular surface openings. Ransome states that the vein, on the 220 level, appeared to be 90 feet wide and, as a whole, probably carries from 0.15 to 0.20 oz of gold per ton. The vein strikes from N 78°W to N 85°W and dips 70°S and lies in what appears to be quartz-monzonite porphyry. The width varies from 20 to 100' wide, the widest part being in the west portion and is traceable for over a mile to the east of the mine and the vein fracture is traceable for some distance to the west.

The vein filling consists of fine grained quartz, calcite, cut by stringers and clusters of pale green fluorite. Sulphides appear to be marcasite and cupriferous pyrite (or minor chalcopyrite). The gold values are mainly in limonitic, or hematitic blebs and stringers, or are associated, deeper, with sulphides. The Moss carries more silver than most of the Oatman ores. The largest ore shoot extended to a depth of 65 feet, lying entirely in oxidized material.

This shoot generally is located where a N-S multiple shear zone crosses the vein. Here as at the Hardy, small rich shoots project out past the vein into the country rock. These shoots were reported to have been much richer than the average grade of the main vein. This shear was prospected, to the south, by shallow pits & cuts, and this highly iron stained zone locally contained areas of material which may exceed \$3.00 per ton.

MOSS MINE - Mohave County

Excerpt from letter written by Elgin B. Holt, January 26, 1945.

"The Moss mine was discovered by John Moss during 1863 or 1864. He extracted from a prospect hole a bonanza netting about \$240,000, which he spent immediately in ill-directed work. During 1940 the Tonopah Mining Company spent a lot of money, with nil results, developing and drilling the Moss vein, looking for large low grade mill tonnage. However, I believe this mine still has possibilities if correctly developed by following downward the main ore shoot found in the old Moss mine workings. Also, the Oatman area as a whole is well-worth looking over with a view to projecting new exploratory work in some of the mines of this district."

See letter to George F. Potts

References (with each Mine Report)

1. Wilson, Eldred; Cunningham, J. B.; Butler G. M.; Arizona Lode Gold Mines and Gold Mining, Arizona Bureau of Mines, No. 37, Bull. No. 137, Aug. 15, 1934, pp; 80-100.
2. Lausen, Carl, Geology and Ore Deposits of the Oatman and Katherine districts, Arizona; University of Arizona Bureau of Mines Bull. 131, 1931.
3. Ransome, F. L., Geology of the Oatman gold district, Arizona:- U. S. Geol. Survey Bull. 743, 1923.
4. Schrader, F. C. Mineral deposits of the Gerbat Range, Black Mountains and Grand wash Cliffs, Mohave County, Arizona; U. S. Geol. Survey Bull. 397, 1909

DEPARTMENT OF MINERAL RESOURCES
State of Arizona
MINE OWNER'S REPORT

Date February 7, 1949.

1. Mine: California Moss Lot 37, survey no. 182
2. Location: Sec. _____ Twp. _____ Range _____ Nearest Town Oatman Arizona
Distance 7 miles Direction N. W. Road Condition _____
3. Mining District & County: Silver Creek + Mohave County.
4. Former Name of Mine: _____
5. Owner: Mrs. Helen Georgia Sripes 502 So Virginia St. Roswell, New Mexico.
Address: Mrs. Ella Levea Steenwood 7308 Old Main Street Road, Houston, Texas.
Mrs. Ina Mary White 353 Echo Ave. Fresno California
6. Operator: Mrs. Emma Joe Birch, P. O. Box 84, Oatman, Arizona
Address: at present at Ox-yoke Inn, Oatman Arizona, may move soon to residence in town in Oatman Arizona.
7. Principal Minerals: Gold and silver and others
8. Number of Claims: 1 Lode _____ Placer _____
Patented yes Unpatented _____
9. Type of Surrounding Terrain: _____

10. Geology & Mineralization: _____

11. Dimension & Value of Ore Body: _____

12. Ore "Blocked Out" or "In Sight":
.....
.....
.....
.....

Ore Probable:

13. Mine Workings—Amount and Condition:

No.	Feet	Condition
Shafts.....		
Raises.....		
Tunnels 1	about 20 ft and about 20 ft drift.	Old tunnel dug a long time ago and about six ft high, about six feet in breadth, —
Crosscuts.....		
Stopes.....		

14. Water Supply: No water on property, but some water deep near by.
in shaft deep in mine near by very close. I hear

15. Brief History: Good property, good ore, and very
good roads up to the California Moss Mine,
and road over the California Moss Mine property,
for mining roads.

16. Signature: *Mrs. Emma Joe Birch*

17. If Property for Sale, List Approximate Price and Terms: \$2,000,000.00

DEPARTMENT OF MINERAL RESOURCES

STATE OF ARIZONA

FIELD ENGINEERS REPORT

Mine Moss Mine

Date December 19, 1957

District San Francisco Dist. Mohave Co

Engineer Lewis A. Smith

Subject: Visit to the Property

Location: Sec. 13, T 20 N, R 21 W, 7 miles NW of Oatman and 2 miles north of Silver Creek.

Owners: W. H. Hittson and James McCarthy, Oatman, Arizona

Production: Reported to be about \$240,000 from near the surface.

Work: The Moss Vein was developed by a 230' shaft, around 750' of workings, 900' of tunnel and several irregular surface openings. Ransone states that the vein, on the 220 level, appeared to be 90 feet wide and, as a whole, probably carries from 0.15 to 0.20 oz of gold per ton. The vein strikes from N 78°W to N 85°W and dips 70°S and lies in what appears to be quartz-monzonite porphyry. The width varies from 20 to 100' wide, the widest part being in the west portion and is traceable for over a mile to the east of the mine and the vein fracture is traceable for some distance to the west.

The vein filling consists of fine grained quartz, calcite, cut by stringers and clusters of pale green fluorite. Sulphides appear to be marcasite and cupriferous pyrite (or minor chalcopyrite). The gold values are mainly in limonitic, or hematitic blebs and stringers, or are associated, deeper, with sulphides. The Moss carries more silver than most of the Oatman ores. The largest ore shoot extended to a depth of 65 feet, lying entirely in oxidized material.

This shoot generally is located where a N-S multiple shear zone crosses the vein. Here as at the Hardy, small rich shoots project out past the vein into the country rock. These shoots were reported to have been much richer than the average grade of the main vein. This shear was prospected, to the south, by shallow pits & cuts, and this highly iron stained zone locally contained areas of material which may exceed \$3.00 per ton.

(Do not write in this space)

(Wrap each specimen separately, or place it in a substantial bag, by itself, with a number attached, identical with the number on this card.)

Ore _____

Cabinet _____

No. _____

Specimen No. 10, collected by Robert E. Morrow
Field Engineer

Name of ore Gold

Operator W. G. Hellier

Minerals contained _____

Mine active or inactive Active

If inactive, when operated _____

Gangue _____

Specimen presented by _____

Depth at which taken 300 ft.

Date Aug 15, 1940

Approximate mineral content (in terms of average per ton) \$15.00 per ton
\$1000. per ton

Notes (Any general information regarding the history of the property.)

This property has a width of 80 feet.

Name of mine or claim Moss Mine

Group _____

District Oatman

Location (distance and direction by highway from what town) _____

If more space is desired for notes, use other side.

Owner of property _____

This specimen is now in the ADMR Museum (see the K number).

MOSS MINE - Mohave County

Excerpt from letter written by Elgin B. Holt, January 26, 1945.

"The Moss mine was discovered by John Moss during 1863 or 1864. He extracted from a prospect hole a bonanza netting about \$240,000, which he spent immediately in ill-directed work. During 1940 the Tonopah Mining Company spent a lot of money, with nil results, developing and drilling the Moss vein, looking for large low grade mill tonnage. However, I believe this mine still has possibilities if correctly developed by following downward the main ore shoot found in the old Moss mine workings. Also, the Oatman area as a whole is well-worth looking over with a view to projecting new exploratory work in some of the mines of this district."

See letter to George F. Potts

References (with each Mine Report)

1. Wilson, Eldred; Cunningham, J. B.; Butler G. M.; Arizona Lode Gold Mines and Gold Mining, Arizona Bureau of Mines, No. 37, Bull. No. 137, Aug. 15, 1934, pp; 80-100.
2. Lausen, Carl, Geology and Ore Deposits of the Oatman and Katherine districts, Arizona; University of Arizona Bureau of Mines Bull. 131, 1931.
3. Ransome, F. L., Geology of the Oatman gold district, Arizona:- U. S. Geol. Survey Bull. 743, 1923.
4. Schrader, F. C. Mineral deposits of the Gerbat Range, Black Mountains and Grand wash Cliffs, Mohave County, Arizona; U. S. Geol. Survey Bull. 397, 1909

DEPARTMENT OF MINERAL RESOURCES

State of Arizona

MINE OWNER'S REPORT

Date February 7, 1949.

1. Mine: California Moss Lot 37, survey no. 182

2. Location: Sec. Twp. Range. Nearest Town Oatman Arizona
Distance 7 miles Direction N. W. Road Condition

3. Mining District & County: Silver Creek + Mohave County

4. Former Name of Mine:

5. Owner: Mrs. Helen Georgia Sripes 502 So Virginia St Roswell, New Mexico.
Address: Mrs. Ella Levea Greenwood 7308 Old Main Street Road, Houston, Texas
Mrs. Anna Mary White 353 Echo Ave. Fresno California

6. Operator: Mrs. Emma Joe Birch, P. O. Box 84, Oatman, Arizona
Address: at present at Ox-yoke Inn, Oatman Arizona, may move soon to residence in town in Oatman Arizona.

7. Principal Minerals: Gold and silver and others

8. Number of Claims: 1 Lode Placer
Patented yes Unpatented

9. Type of Surrounding Terrain:

10. Geology & Mineralization:

11. Dimension & Value or Ore Body:

12. Ore "Blocked Out" or "In Sight":

Ore Probable:

13. Mine Workings—Amount and Condition:

No.	Feet	Condition
Shafts		
Raises		
Tunnels 1	about 20 ft and about 20 ft drift.	Old tunnel dug a long time ago and about six ft. high, about six feet in breadth.
Crosscuts		
Stopes		

14. Water Supply:

no water on property, but some water deep near by. in shaft deep in mine near by very close. I hear

15. Brief History:

good property, good ore, and very good roads up to the California Moss Mine, and road over the California Moss Mine property, for mining roads.

16. Signature:

Mrs. Emma Joe Birch

17. If Property for Sale, List Approximate Price and Terms:

\$2,000,000.00