



## **CONTACT INFORMATION**

Mining Records Curator  
Arizona Geological Survey  
1520 West Adams St.  
Phoenix, AZ 85007  
602-771-1601  
<http://www.azgs.az.gov>  
[inquiries@azgs.az.gov](mailto:inquiries@azgs.az.gov)

The following file is part of the

Arizona Department of Mines and Mineral Resources Mining Collection

## **ACCESS STATEMENT**

These digitized collections are accessible for purposes of education and research. We have indicated what we know about copyright and rights of privacy, publicity, or trademark. Due to the nature of archival collections, we are not always able to identify this information. We are eager to hear from any rights owners, so that we may obtain accurate information. Upon request, we will remove material from public view while we address a rights issue.

## **CONSTRAINTS STATEMENT**

The Arizona Geological Survey does not claim to control all rights for all materials in its collection. These rights include, but are not limited to: copyright, privacy rights, and cultural protection rights. The User hereby assumes all responsibility for obtaining any rights to use the material in excess of "fair use."

The Survey makes no intellectual property claims to the products created by individual authors in the manuscript collections, except when the author deeded those rights to the Survey or when those authors were employed by the State of Arizona and created intellectual products as a function of their official duties. The Survey does maintain property rights to the physical and digital representations of the works.

## **QUALITY STATEMENT**

The Arizona Geological Survey is not responsible for the accuracy of the records, information, or opinions that may be contained in the files. The Survey collects, catalogs, and archives data on mineral properties regardless of its views of the veracity or accuracy of those data.

PRINTED: 03/22/2002

ARIZONA DEPARTMENT OF MINES AND MINERAL RESOURCES AZMILS DATA

PRIMARY NAME: MOONLIGHT MINE

ALTERNATE NAMES:  
GEORGIA BELLE

SANTA CRUZ COUNTY MILS NUMBER: 134

LOCATION: TOWNSHIP 22 S RANGE 10 E SECTION 27 QUARTER SE  
LATITUDE: N 31DEG 28MIN 43SEC LONGITUDE: W 111DEG 18MIN 03SEC  
TOPO MAP NAME: ORO BLANCO - 15 MIN

CURRENT STATUS: EXP PROSPECT

COMMODITY:  
GOLD  
SILVER

BIBLIOGRAPHY:  
ADMMR MOONLIGHT MINE FILE

SEC. 27.

SEC. 26.

SEC. 25.

Moonlight Claim.

SEC. 34.

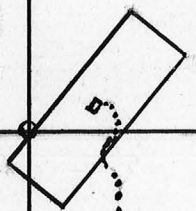
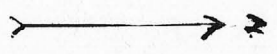
SEC. 35.

SEC. 36.

Austerlitz Mill.

Road to Arivaca  
10 mi.

To Ruys 2 mi

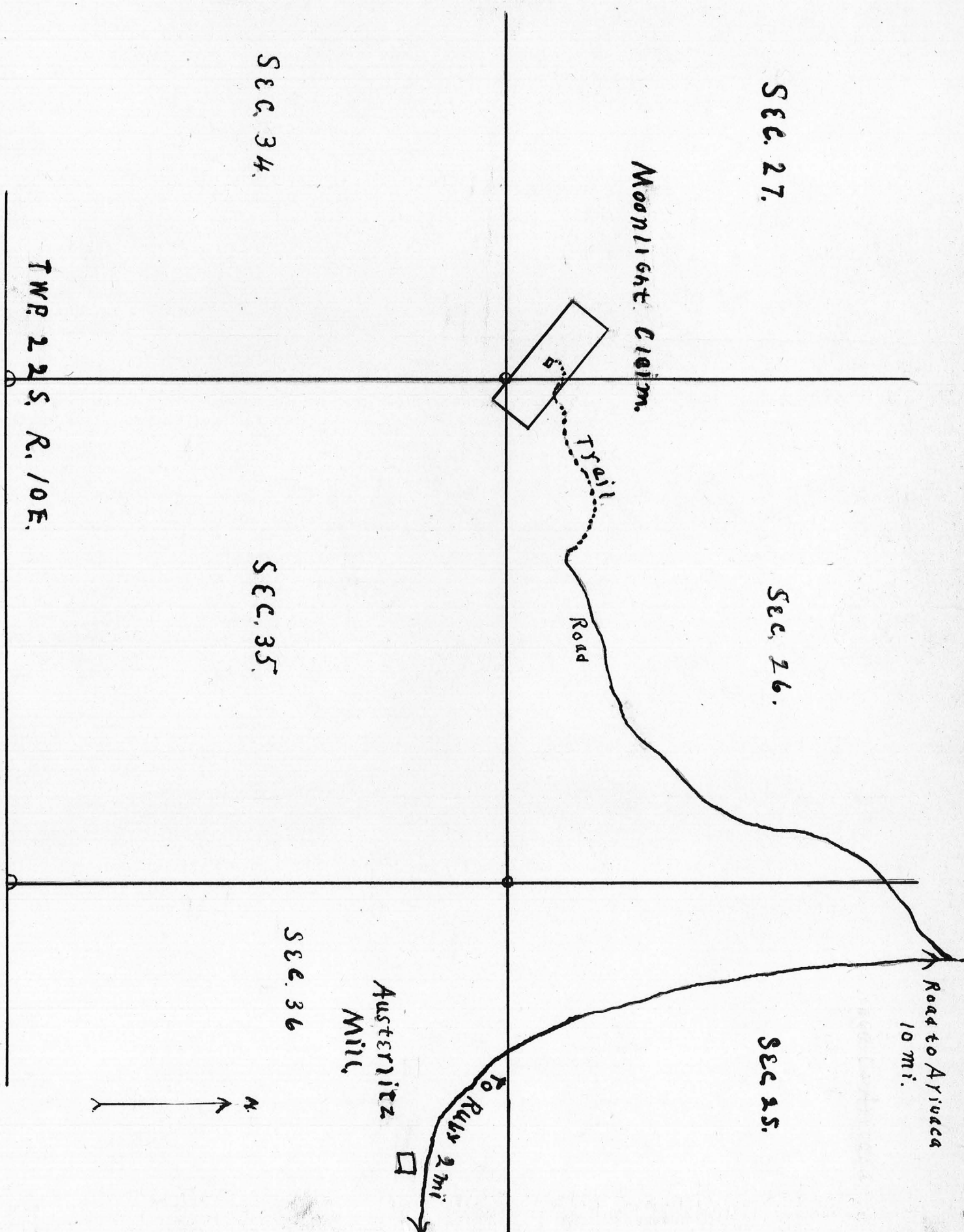


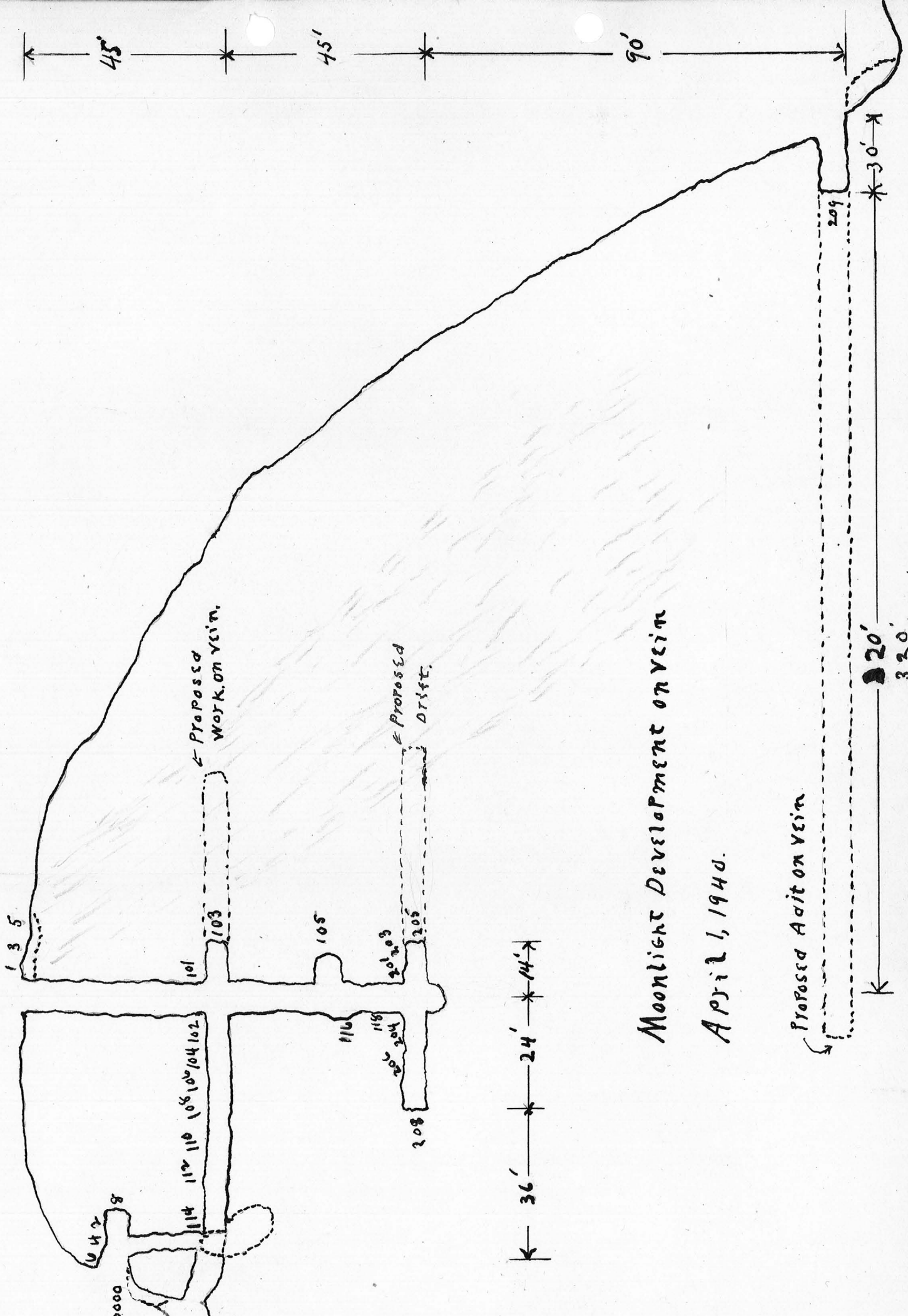
Trail

Road

TWP 22 S. R. 10 E.

TWP 23 S. R. 10 E.





← Proposed Work on Vein.

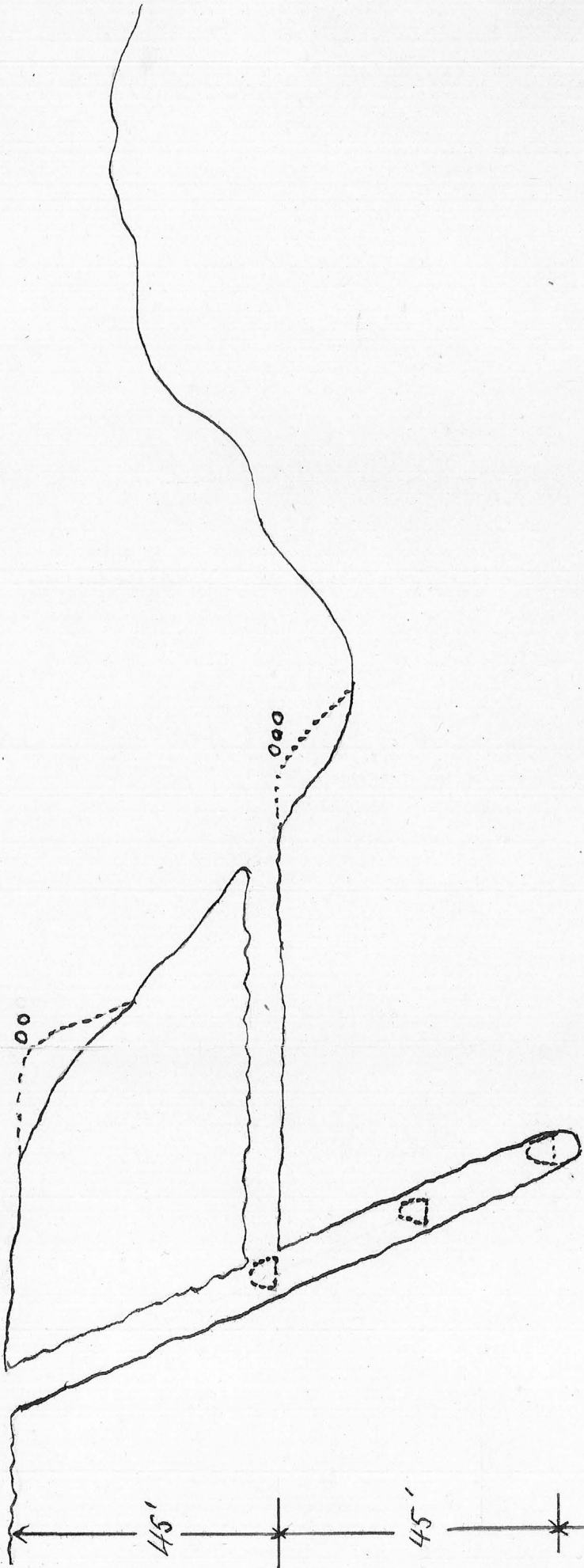
← Proposed Drift.

Moonlight Development on Vein

April 1, 1940.

← Proposed Adit on Vein

20'  
320'



Section Looking N.W.

Moonlight Claim.

APR. 1. 1940

PROPOSED ADIT



BILLIE BOONE CLAIM

Santa Cruz County

Sections 27 & 28, T22S, R10E

MG WR 8/14/80: Owner is Billie Boone Mining Co., 320 N.  
Meridian St, Indianapolis, Indiana 46204

8/20/80



DEPARTMENT OF MINERAL RESOURCES  
STATE OF ARIZONA  
OWNERS MINE REPORT

MM-39

Date

1. Mine Moonlight Mine
2. Mining District & County Oro Blanco District,  
Santa Cruz County
3. Former name Georgia Belle, also once known as  
Moonlight.
4. Location 10 miles N. W. of Arivaca;  
5½ miles N. W. of Ruby.
5. Owner ✓ Maude Phillips
6. Address (Owner) 446 Moscow St.,  
San Francisco, California
7. Operator Albert W. Harris.
8. Address (Operator) 731½ N. 8th St.,  
Tucson, Arizona.
9. President
10. Gen. Mgr.
11. Mine Supt.
12. Mill Supt.
13. Principal Metals Gold, Silver.
14. Men Employed None.
15. Production Rate
16. Mill: Type & Cap. None
17. Power: Amt. & Type None.
18. Operations: Present None.
19. Operations Planned Drifting N. W. on first and, or second levels toward ore shoot now  
exposed in open cut N. W. from shaft on surface. Later, drifting S. E. on vein on  
third level, 180 ft. lower than shaft collar.
20. Number Claims, Title, etc. One claim. Title clear. Located Sept. 1, 1939 after former  
owners had forfeited their claim by failure to perform assessment work.
21. Description: Topography & Geography The claim lies on the East slope of the Oro Blanco Range,  
the shaft collar being approximately 4500 ft. above sea level. The highest point on  
the claim is near the South East end and is about 300 ft. higher than the shaft. Near  
the North West end line, a gulch crosses the lode at a point 180 ft. lower than the  
shaft collar; an adit on the lode driven from this point will give the above amount  
of depth at the shaft.
22. Mine Workings: Amt. & Condition Approximately 200 ft. of development work has been done,  
nearly all on the lode. Attached sketches show the distribution of this work and  
the location of proposed further development. All workings are open for inspection  
and sampling.

23. **Geology & Mineralization** The ore occurs in a shear zone. Subsequent to the movement which produced the shearing, silicifying solutions precipitated their burden of pyrite, bearing gold and silver, at favorable points, and also altered the crushed material in the zone. In places this silicification and mineralization invades the undisturbed rock on either or both sides of shear. Later, acid surface waters leached the sulphur and any easily soluble minerals, leaving residual hematite and limonite, most or all of the gold and silver.
24. **Ore: Positive & Probable, Ore Dumps, Tailings** (part of the silver. Continued on attached page.) The ore production to date has been sorted from rock broken in development and shipped to ore buyers. This ore assayed from 0.75 oz. to 0.58 oz. gold and 1.5 oz. silver. The ore being completely oxidized, can be easily treated by all the sliming cyanide process with a very high extraction, but tests made at the University of Arizona Mines Laboratory demonstrate that grinding to -65 mesh, making a high grade concentrate by flotation,
- 24-A **Vein Width, Length, Value, etc.** (continued on attached page)  
Ore not being exposed on 3 sides, it is impossible to estimate "ore in sight".  
The assay sheet enclosed shows location and value of 25 samples.
25. **Mine, Mill Equipment & Flow Sheet** A mill site with water is available four miles from the mine, at a very small rental.
26. **Road Conditions, Route** A good road leads to a point  $\frac{1}{2}$  mile from the shaft. Pack trail leads to the mine over a grade not too steep for road building, when and if mine development warrants.
27. **Water Supply** There is no water in the present mine workings.
28. **Brief History** Like many old properties its history consists largely of tradition and oral communications. The ground was being worked prior to 1890 and for several years after this two men took their living out of it, reducing the ore in an arastra, despite the fact that the ore does not easily amalgamate. The property was inactive until 1932, only two small shipments have been made since.
29. **Special Problems, Reports Filed** No reports on the property have been made and filed except to the Reconstruction Finance Corporation with an application for a class "B" loan. The information given in that application was practically the same as in this statement.
30. **Remarks** This property, at the present stage of development shows evidence of being able to supply a 25 ton mill and return sufficient profit to finance deeper development. It isn't a mine, yet, but is decidedly in the "preferred prospect" class.
31. **If property for sale: Price, terms and address to negotiate.** The property is for sale on a 3 year "lease with option to purchase" contract for \$15,000. First payment \$1,000 within 6 months after date of contract, balance spread over the following  $2\frac{1}{2}$  years, the distribution being a matter of negotiation. Royalty, 15% of the net value of ores shipped or milled during the contract period to be applied on the contract payment next due. The property can be had on a straight lease for one year at a royalty of 10% without option to purchase.
32. Signed.....  
Albert W. Harris
33. **Use additional sheets if necessary.** 731 $\frac{1}{2}$  East 8th St.  
Tucson, Arizona.



23 (continued from form page)

This leaching action is practically complete at the level now exposed in the workings. The presence of some silver in all the assays would lead to the assumption that much more of this metal was present before the leaching action took place, and that a secondary enrichment, boosting the silver values, will be encountered if the mine is opened to further depth reaching a zone favorable to the precipitation of this dissolved silver. The wall rock is one of the volcanics which, in the eastern and northern parts of the district, overlies the Oro Blanco sedimentaries.

24 (continued from form page)

then cyaniding this concentrate will permit reduction of this ore to bullion at a much less cost for plant than by cyaniding the whole pulp. Recovery by either process will be better than 90% of the gold and silver in the mill feed. Two small dumps on the property will return a profit over milling cost. A small amount of sorting will produce ore worth 0.25 oz. gold and a small amount of silver from a drift face exposed on the first level.

111-39  
DEPARTMENT OF MINERAL RESOURCES  
STATE OF ARIZONA  
MINE OWNER'S REPORT

Date

1. Mine Moonlight Mine
2. Location 10 miles S. W. of Arivaca;  $5\frac{1}{2}$  miles N. W. of Ruby.
3. Mining District & County Oro Blanco District, Santa Cruz County.
4. Former name Georgia Belle, also once known as Moonlight.
5. Owner Maude Phillips.
6. Address (Owner) 446 Moscow St., San Francisco, Calif.
7. Operator Albert W. Harris.
8. Address (Operator) 731 $\frac{1}{2}$  E. 8th St., Tucson, Arizona.
9. President, Owing Co.
- 9A. President, Operating Co.
10. Gen. Mgr.
14. Principal Minerals Gold, Silver.
11. Mine Supt.
15. Production Rate
12. Mill Supt.
16. Mill: Type & Cap. None.
13. Men Employed None.
17. Power: Amt. & Type None.
18. Operations: Present None.
19. Operations: Planned Drifting N. W. on first and, or second levels toward ore shoot now exposed in open cut N. W. from shaft on surface. Later, drifting S. E. on vein on third level, 180 ft. lower than shaft collar.
20. Number Claims, Title, etc. One claim. Title clear. Located Sept. 1, 1939 after former owners had forfeited their claim by failure to perform assessment work.
21. Description: Topography & Geography The claim lies on the East slope of the Oro Blanco Range, the shaft collar being approximately 4500 ft. above sea level. The highest point on the claim is near the South East end and is about 300 ft. higher than the shaft. Near the North West end line, a gulch crosses the lode at a point 180 ft. lower than the shaft collar; an adit on the lode driven from this point will give the above amount of depth at the shaft.
22. Mine Workings: Amt. & Condition Approximately 200 ft. of development work has been done, nearly all on the lode. Attached sketches show the distribution of this work and the location of proposed further development. All workings are open for inspection and sampling.

**Geology & Mineralization** The ore occurs in a shear zone. Subsequent to the movement which produced the shearing, silicifying solutions precipitated their burden of pyrite, bearing gold and silver, at favorable points, and also altered the crushed material in the zone. In places silicification and mineralization invades the undisturbed rock on either or both sides of the shear. Later, acid surface waters leached the sulphur and any easily soluble minerals, leaving residual hematite and limonite, most or all of the gold and part of the silver. (continued on attached page)

**Ore: Positive & Probable, Ore Dumps, Tailings** The ore production to date has been sorted from rock broken in development and shipped to ore buyers. This ore assayed from 0.75 oz. to 0.58 oz. gold and 1.5 oz. silver. The ore being completely oxidized, can be easily treated by the all sliming cyanide process with a very high extraction, but tests made at the University of Arizona Mines laboratory demonstrate that grinding to -65 mesh, making a high grade concentrate by flotation, (continued on attached page)

**A. Dimensions and Value of Ore body** Ore not being exposed on 3 sides, it is impossible to estimate "ore in sight". The assay sheet enclosed shows location and value of 25 samples.

**Mine, Mill Equipment & Flow-Sheet** A mill site with water is available four miles from the mine, a very small rental.

**Road Conditions, Route** A good road leads to a point  $\frac{1}{2}$  mile from the shaft. Pack trail leads to the mine over a grade not too steep for road building, when and if mine development warrants.

**Water Supply** There is no water in the present mine workings.

**Brief History** Like many old properties its history consists largely of tradition and oral communications. The ground was being worked prior to 1890 and for several years thereafter two men took their living out of it, reducing the ore in an arastra, despite the fact that the ore does not easily amalgamate. The property was inactive until 1932, only two small improvements have been made since.

**Special Problems, Reports Filed** No reports on the property have been made and filed except to the Reconstruction Finance Corporation with an application for a class "B" loan. The information given in that application was practically the same as in this statement.

**Remarks** This property, at the present stage of development shows evidence of being able to support a 25 ton mill and return sufficient profit to finance deeper development. It isn't a mine, but is decidedly in the "preferred prospect" class.

**If property for sale: Price, terms and address to negotiate.** The property is for sale on a 3 year "lease with option to purchase" contract for \$15,000 (dollars). First payment \$1,000 (dollars) within 6 months after date of contract, balance spread over the following  $2\frac{1}{2}$  years, the distribution being a matter of negotiation. Royalty, 15% of the net value of ores shipped or milled during the contract period to be applied on the contract payment next due. The property can be had on a straight lease for one year at a royalty of 10% without option to purchase.

Signature  
Albert W. Harris  
731 $\frac{1}{2}$  East 8th St.

Department of Mineral Resources  
State of Arizona  
Mine Owner's Report.

1. Moonlight Mine.
2. 10 miles S. W. of Arivaca;  $5\frac{1}{2}$  miles N.W. of Ruby.
3. Oro Blanco District, Santa Cruz County.
4. Georgia Belle, also once before known as Moonlight.
5. Maude Phillips.
6. 446 Moscow St., San Francisco, Calif.
7. Albert W. Harris.
8.  $731\frac{1}{2}$  E. 8th. St., Tucson, Arizona.
9. \_\_\_\_\_
- 19.A. \_\_\_\_\_
10. \_\_\_\_\_
11. \_\_\_\_\_
12. \_\_\_\_\_
13. None.
14. Gold, Silver.
15. \_\_\_\_\_
16. None.
17. None.
18. None.
19. Drifting N. W. on first and, or second levels toward ore shoot now exposed in open cut N.W. from shaft on surface. Later, drifting S.E. on vein on third level, 180 ft. lower than shaft collar.
20. One claim. Title clear. Located Sept. 1, 1939 after former owners had forfeited their claim by failure to perform assessment work.
21. The claim lies on the East slope of the Oro Blanco Range, the shaft collar being approximately 4500 ft. above sea level. The highest point on the claim is near the South East end and



is about 300 ft. higher than the shaft. Near the North West end line, a gulch crosses the lode at a point 180 ft. lower than the shaft collar; an adit on the lode driven from this point will give the above amount of depth at the shaft.

22. Approximately 200 ft. of development work has been done, nearly all on the lode. Attached sketches show the distribution of this work and the location of proposed further development. All workings are open for inspection and sampling.
23. The ore occurs in a shear zone. Subsequent to the movement which produced the shearing, silicifying solutions precipitated their burden of pyrite, bearing gold and silver, at favorable points, and also altered the crushed material in the zone. In places this silicification and mineralization invades the undisturbed rock on either or both sides of the shear.
- Later, acid surface waters leached the sulphur and any easily soluble minerals, leaving residual hematite and limonite, most or all of the gold and part of the silver. This leaching action is practically complete at the level now exposed in the workings. The presence of some silver in all the assays would lead to the assumption that much more of this metal was present before the leaching action took place, and that a secondary enrichment, boosting the silver values, will be encountered if the mine is opened to further depth reaching a zone favorable to the precipitation of this dissolved silver. The wall rock is one of the volcanics which, in the eastern and northern parts of the district, overlie the Oro Blanco sedimentaries.
24. The ore production to date has been sorted from rock broken in development and shipped to ore buyers. This ore assayed from .75oz. to .58oz. gold and 1.5oz. silver.

The ore being completely oxydized, can be easily treated by the all sliming cyanide process with a very high extraction, but tests made at the University of Arizona Mines Laboratory demonstrate that grinding to -65 mesh, making a high grade concentrate by flotation, then cyaniding this concentrate will permit reduction of this ore to bullion at a much less cost for plant than by cyaniding the whole pulp. Recovery by either process will be better than 90% of the gold and silver in the mill feed. Two small dumps on the property will return a profit over milling cost. A small amount of sorting will produce ore worth .25 oz. gold and a small amount of silver from a drift face exposed on the first level.

- 24.A. Ore not being exposed on 3 sides, it is impossible to estimate "ore in sight". The assay sheet enclosed shows location and value of 25 samples.
25. A mill site with water is available four miles from the mine, at a very small rental.
26. A good road leads to a point  $\frac{1}{2}$  mile from the shaft. Pack trail leads to the mine over a grade not too steep for road building, when and if mine development warrants.
27. There is no water in the present mine workings.
28. Like many old properties its history consists largely of tradition and oral communications. The ground was being worked prior to 1890 and for several years after this two men took their living out of it, reducing the ore in an arastra, despite the fact that the ore does not easily amalgamate. The property was inactive until 1932, only two small shipments have been made since.
29. No reports on the property have been made and filed except to the Reconstruction Finance Corporation with an application for

a class "B" loan. The information given in that application was practically the same as in this statement.

30. This property, at the present stage of development shows evidence of being able to supply a 25 ton mill and return sufficient profit to finance deeper development. It isn't a mine, yet, but is decidedly in the "preferred prospect" class.
31. The property is for sale on a 3 year "lease with option to purchase" contract for \$15,000 (dollars). First payment \$1,000 (dollars) within 6 months after date of contract, balance spread over the following  $2\frac{1}{2}$  years, the distribution being a matter for negotiation. Royalty, 15% of the net value of ores shipped or milled during the contract period to be applied on the contract payment next due. The property can be had on a straight lease for one year at a royalty of 10% without option to purchase.

*Albert W. Harris*

---

Albert W. Harris  
731 $\frac{1}{2}$  East 8th. St.  
Tucson, Arizona



Record of Assays  
 Numbers corresponding to location of Samples on  
 Moonlight claim. Assays made by A. L. Pellegrin and Son  
 September 1935.

Sample#		oz. gold	oz. silver
00	Dump ore at shaft collar	.54	.8
000	" " " 1st. level crosscut	.16	.7
0000	" " " Upper adit	.13	.6
1	Across 22" open cut, 5' N.W. from Shaft collar	1.52	1.5
2	" 6" 8ft. from face of upper adit	.16	.6
3	" 18" open cut 13' N.W. from shaft collar	.12	.8
4	" 18" 16ft. from face of upper adit	.21	.6
5	" 40" open cut 21' N. W. from shaft collar	.18	.4
6	" 12" brow of upper adit, over winze	.17	.6
8	" 6" face of upper adit	.08	.1
101	" 12" N. W. drift at shaft 1st. level	.08	.5
102	" 12" 8ft. S. E. from shaft " "	.08	.8
103	" 24" face of N. W. drift " "	.08	.4
104	" 12" 16' S. E. from shaft " "	.15	.3
105	" 8" face of sub level, 9' N.W. from shaft	.26	.4
106	" 18" 24' S. E. from shaft, 1st. level	.32	.6
108	" 18" 32' S. E. " " " "	.14	.5
110	" 30" 40' " " " "	.16	.8
112	" 18" 48' " " " "	.25	.8
114	" 8" 56' " " " "	.11	.6
116	" 18" S. E. end of shaft at sub level	.30	1.5
118	" 8" " " " " 12' above 2nd. level	.14	1.4
201	" 14" at shaft, N.W. drift 2nd. level	.56	.5
202	" 10" " " S. E.	.32	.4
203	" 12" 6ft. from shaft, N.W. drift 2nd. level	.12	.2
204	" 18" 8ft. S.E. from shaft 2nd. level	.10	.3
205	" 6" face of N.W. drift " "	.02	.2
206	" 24" 16' S.E. from shaft " "	.03	.1
208	" 18" Face of S.E. drift " "	.02	.1
209	" 24" Face of adit, 390' N.W. from shaft	.25	.6

*Albert W. Harris*

Albert W. Harris



Tucson Ariz: Apr 27, 1940

Department of Mineral Resources,  
Phoenix, Arizona.

Dear Sirs:-

Enclosed you will find a report on two small mining properties in Santa Cruz County.

If they do not meet the requirements necessary for filing such descriptions with your office, kindly advise me and I will either condense them or supplement them with data which seem to be needed.

Very Truly Yours,

Albert W. Harris,  
731 1/2 E. 8th St.,  
Tucson Arizona.