



## **CONTACT INFORMATION**

Mining Records Curator  
Arizona Geological Survey  
1520 West Adams St.  
Phoenix, AZ 85007  
602-771-1601  
<http://www.azgs.az.gov>  
[inquiries@azgs.az.gov](mailto:inquiries@azgs.az.gov)

The following file is part of the

Arizona Department of Mines and Mineral Resources Mining Collection

## **ACCESS STATEMENT**

These digitized collections are accessible for purposes of education and research. We have indicated what we know about copyright and rights of privacy, publicity, or trademark. Due to the nature of archival collections, we are not always able to identify this information. We are eager to hear from any rights owners, so that we may obtain accurate information. Upon request, we will remove material from public view while we address a rights issue.

## **CONSTRAINTS STATEMENT**

The Arizona Geological Survey does not claim to control all rights for all materials in its collection. These rights include, but are not limited to: copyright, privacy rights, and cultural protection rights. The User hereby assumes all responsibility for obtaining any rights to use the material in excess of "fair use."

The Survey makes no intellectual property claims to the products created by individual authors in the manuscript collections, except when the author deeded those rights to the Survey or when those authors were employed by the State of Arizona and created intellectual products as a function of their official duties. The Survey does maintain property rights to the physical and digital representations of the works.

## **QUALITY STATEMENT**

The Arizona Geological Survey is not responsible for the accuracy of the records, information, or opinions that may be contained in the files. The Survey collects, catalogs, and archives data on mineral properties regardless of its views of the veracity or accuracy of those data.

PRINTED: 07-11-2012

ARIZONA DEPARTMENT OF MINES AND MINERAL RESOURCES AZMILS DATA

PRIMARY NAME: MOLLY-O

ALTERNATE NAMES:

PIMA COUNTY MILS NUMBER: 711

LOCATION: TOWNSHIP 21 S RANGE 10 E SECTION 9 QUARTER NE  
LATITUDE: N 31DEG 37MIN 08SEC LONGITUDE: W 111DEG 19MIN 30SEC  
TOPO MAP NAME: ARIVACA - 15 MIN

CURRENT STATUS: PAST PRODUCER

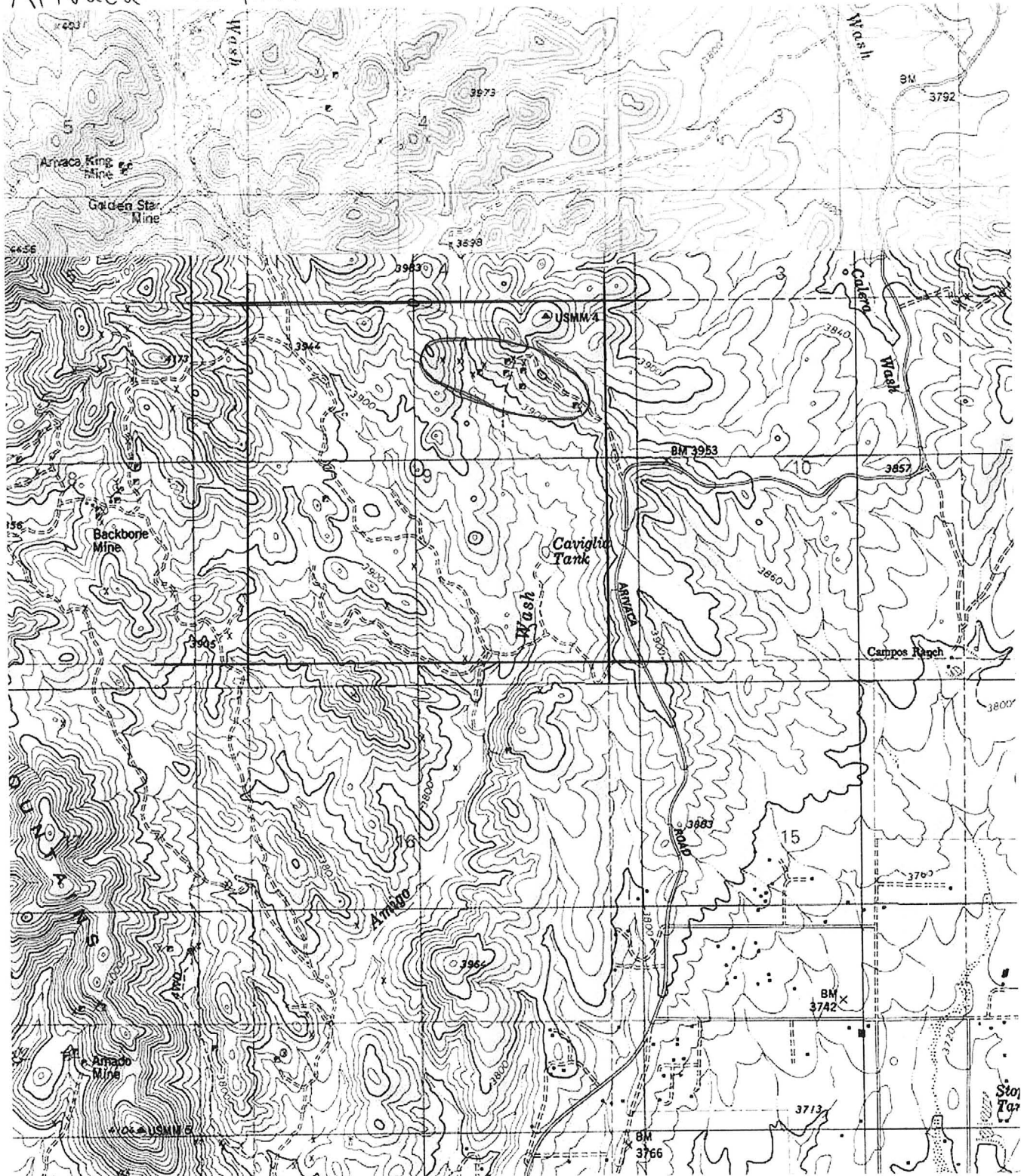
COMMODITY:

LEAD  
SILVER  
COPPER  
GOLD

BIBLIOGRAPHY:

ADMMR MOLLY-O FILE

Arivaca - 15 min



N 31 37' 08" W 111 19' 30"

Molly-O

MOLLY-O MINE

PIMA COUNTY  
ARIVACA DIST.

Mr. Jack George, Arivaca, and Mrs. O. B. Roeske, Arivaca (brother and sister) state that they own - have purchased from Chas. Stewart, 2 unpatented claims- the Moly-O Claims. They would like to sell them or lease them out to operators. Mine Owner's Report blanks for submitting information were mailed to these owners.

10-6-59

A.L.JOHNSON Conf. Report

---

DEPARTMENT OF MINERAL RESOURCES

STATE OF ARIZONA

FIELD ENGINEERS REPORT

Mine Molly-0 Date Feb. 3, 1959  
District Arivaca District, Pima County Engineer Axel L. Johnson  
Subject: Present Status. Information from Harvey Riggs, Arivaca

References: Report of June 3, 1958

Owner: Chas. Stewart, Arivaca, Arizona

Present Status: Closed down.

Bud Landon reported to have transferred his interest in the mine to  
Chas. Stewart.

# DEPARTMENT OF MINERAL RESOURCES

STATE OF ARIZONA

## FIELD ENGINEERS REPORT

Mine Molly-0

Date June 3, 1958

District Arivaca, Pima County

Engineer Axel L. Johnson

Subject: Field Engineer's Report. Information from Chas. Stewart and Budd Landon

Location: Mine is located about  $3\frac{1}{2}$  miles north of Arivaca. Mill is located at Arivaca.

No. of Claims: 1 unpatented claim. Owners acquired the claim by relocation January 1956.

Owners: Chas. Stewart, Arivaca, Arizona, and Budd Landon, Arivaca, Arizona.

Principal Minerals: Lead and silver with a small amount of copper and gold.

Present Mining Activity: Producing ore and milling same at their mill. Production about 10 tons per week. 2 men working (the owners).

Geology and Mineralization: Ore is found in quartz vein, 16" to 24" in width, which dips 80° to the north and strikes approximately east and west.

Ore Values: Owners report the ore as averaging about 8% in lead, 32 oz. in silver, 2½% copper, and \$2.00 per ton in gold.

Mine Workings: (1) 135 ft. inclined shaft (incline 80°)  
(2) 1 drift, 25' long on the 50' level.  
(3) 1 drift, 205 ft. long on the 100 ft. level. (85 ft. west and 120 ft. east of the shaft.  
(4) 1 winze - 35 ft. deep sunk from the west drift on the 100 ft. level, with 20-25 ft. of drifting from the bottom of this winze.

Present Mining Operations: Stopping from the west drift on the 100 ft. level. Ore is hoisted in a small ore bucket, dumping directly into a ¾ ton ore car. This is trammed a short distance and dumped into an 8 ton ore bin. From the ore bin, the ore goes to a 10" x 10" jaw crusher, which is driven by a Dodge 6 cylinder engine. The crushed product discharges directly into a 1½ ton Ford truck, for haulage to the mill at Arivaca, a distance of about 3½ miles. About 3 tons of ore is hauled per trip.

Milling Operations: Mill is located on Arivaca Creek in the village of Arivaca. It consists of a 3 unit Stamp Mill and 1 30" x 78" Economy Table, both of which are driven by a 1 cylinder 5 HP Wisconsin engine. The ore, which is hauled from the mine, is dumped on a wooden platform. It is then shovelled by hand into the Stamp Mill. The crushed ore from the Stamp Mill goes to an 1/8" screen. The undersize from this screen goes to the Table. Water for the milling operations is obtained from a well in Arivaca Creek.

The mill capacity is reported by owners to be approximately 3 tons per 8 hour shift.

Owners report that milling operations started only two days ago, and that the operation appears to be successful, but that no actual figures on mill recovery has been obtained to date.