



## **CONTACT INFORMATION**

Mining Records Curator  
Arizona Geological Survey  
1520 West Adams St.  
Phoenix, AZ 85007  
602-771-1601  
<http://www.azgs.az.gov>  
[inquiries@azgs.az.gov](mailto:inquiries@azgs.az.gov)

The following file is part of the

Arizona Department of Mines and Mineral Resources Mining Collection

## **ACCESS STATEMENT**

These digitized collections are accessible for purposes of education and research. We have indicated what we know about copyright and rights of privacy, publicity, or trademark. Due to the nature of archival collections, we are not always able to identify this information. We are eager to hear from any rights owners, so that we may obtain accurate information. Upon request, we will remove material from public view while we address a rights issue.

## **CONSTRAINTS STATEMENT**

The Arizona Geological Survey does not claim to control all rights for all materials in its collection. These rights include, but are not limited to: copyright, privacy rights, and cultural protection rights. The User hereby assumes all responsibility for obtaining any rights to use the material in excess of "fair use."

The Survey makes no intellectual property claims to the products created by individual authors in the manuscript collections, except when the author deeded those rights to the Survey or when those authors were employed by the State of Arizona and created intellectual products as a function of their official duties. The Survey does maintain property rights to the physical and digital representations of the works.

## **QUALITY STATEMENT**

The Arizona Geological Survey is not responsible for the accuracy of the records, information, or opinions that may be contained in the files. The Survey collects, catalogs, and archives data on mineral properties regardless of its views of the veracity or accuracy of those data.

PRINTED: 10-17-2012

ARIZONA DEPARTMENT OF MINES AND MINERAL RESOURCES AZMILS DATA

PRIMARY NAME: MOHAWK

ALTERNATE NAMES:  
COPPER ACE

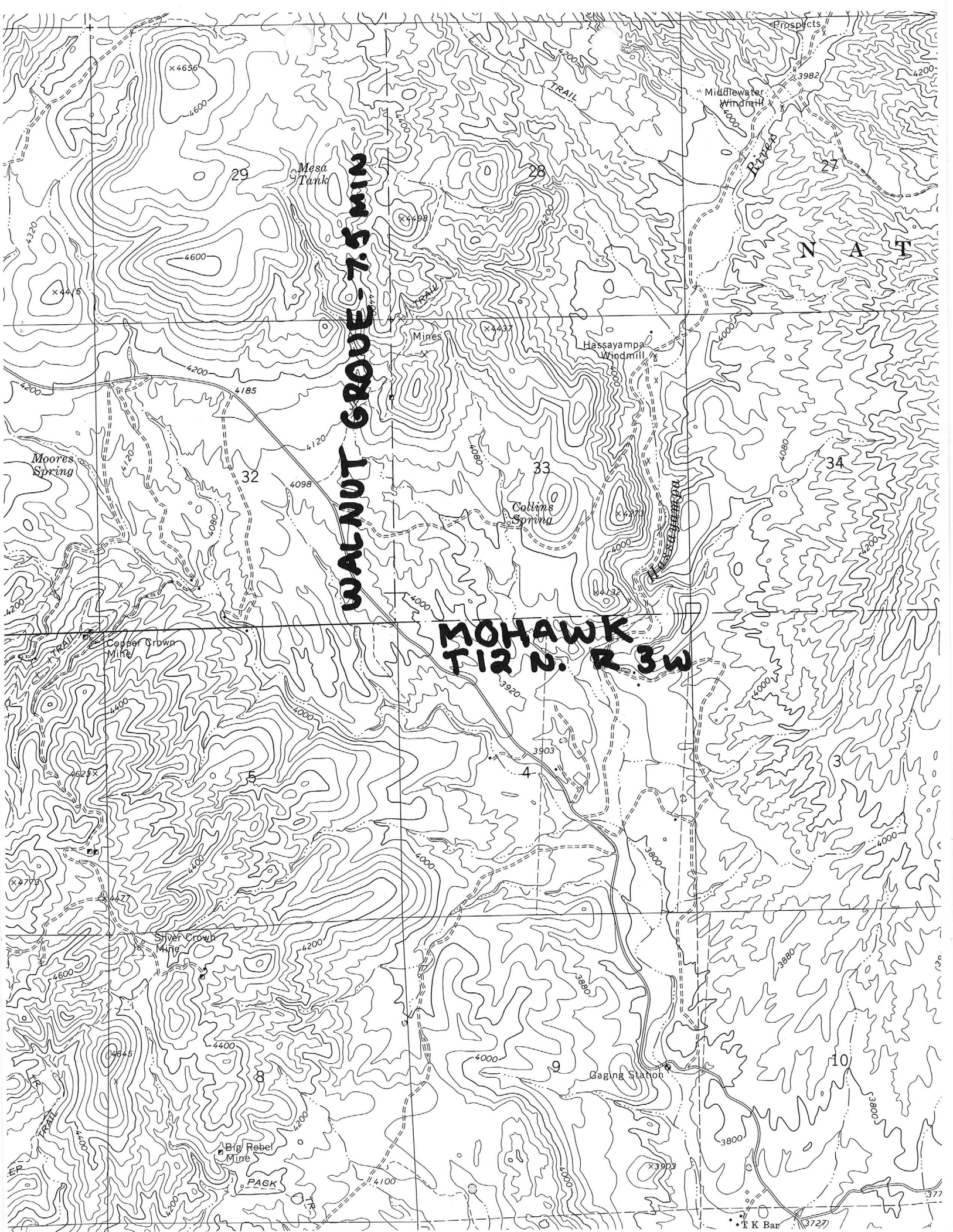
YAVAPAI COUNTY MILS NUMBER: 165

LOCATION: TOWNSHIP 12 N RANGE 3 W SECTION 33 QUARTER NW  
LATITUDE: N 34DEG 20MIN 38SEC LONGITUDE: W 112DEG 34MIN 56SEC  
TOPO MAP NAME: WALNUT GROVE - 7.5 MIN

CURRENT STATUS: EXP PROSPECT

COMMODITY:  
GOLD  
COPPER

BIBLIOGRAPHY:  
ADMMR MOHAWK FILE  
USGS WALNUT GROVE QUAD



WALNUT GROVE 7.5 MIN

MOHAWK  
T12 N. R 3W

12/17/85

ARIZONA DEPARTMENT OF MINES AND MINERAL RESOURCES FILE DATA

PRIMARY NAME: MOHAWK

ALTERNATE NAMES:

COPPER ACE

YAVAPAI COUNTY MILS NUMBER: 165

LOCATION: TOWNSHIP 12 N RANGE 3 W SECTION 33 QTR. NW  
LATITUDE: N 34DEG 20MIN 38SEC LONGITUDE: W 112DEG 34MIN 56SEC  
TOPO MAP NAME: WALNUT GROVE- 7.5 MIN

CURRENT STATUS: EXP PROSPECT

COMMODITY:

GOLD-PRIMARY

COPPER-COPRODUCT

BIBLIOGRAPHY:

USGS WALNUT GROVE QUAD

ADMR MOHAWK FILE WALNUT GROVE DISTRICT

MOHAWK

YAVAPAI COUNTY  
Walnut Grove

KAP WR 11/15/85: Met Jack Dolan, 3089 Soshone Dr. #6D, Prescott, Az. 86301, and traveled to Homer Owens' home where he joined us and we traveled to a prospect on the line between Sections 32 and 33, T12N R3W. The property contains a narrow E-W striking nearly vertical to slightly south dipping quartz vein with a maximum width of 18" and a typical width of about 6 inches. A shaft, described in the Mohawk (file), Walnut Grove District, Yavapai County has been sunk on a wide spot in the vein (location of sample #28203 across 1.5 feet in the southwest wall at the collar) where the vein was folded post mineralization (or the vein filled a small fold in the schist). The collar set of timbers and lagging has deteriorated to the point where it is unsafe to enter the shaft. The vein can be traced for a distance of over 300 feet. About 100' east of the shaft a large cut (reference in Travis Lane's report of February 27, 1959) was made along the vein. The cut is 75' long, 15' wide and about 20' deep at the east end where the vein is exposed and sample #28205 was cut over a width of 0.4 feet. There were indications of previous sampling in the cut. For a distance of 200 feet to the west of the shaft numerous shallow pits have been dug in an effort to trace the vein. The vein was exposed in only one pit. Sample #28204 is hand sorted high grade form sorted vein material. The samples were delivered to Jim Weatherby for assay. As of December 13, 1985 no results were available. Mr. Dolan hopes the deposit is of sufficient grade to support a small mining operation for himself and his son. Mr. Owen explained he had held claims on the property through the end of the 1984 assessment year and had a Canadian junior interested enough to visit the property a year ago but they considered it too small for their needs. Dozer cuts referred to in the above mentioned Travis P. Lane report are still visible and expose only weak iron staining within the granite porphyry.

-----

ARIZONA DEPARTMENT OF MINERAL RESOURCES  
MINERAL BUILDING, FAIRGROUNDS  
PHOENIX, ARIZONA

June 4, 1958

To the Owner or Operator of the Arizona Mining Property named below:

Mohawk Mine (Yavapai)

Gold, silver, lead

(Property)

(ore)

We have an old listing of the above property which we would like to have brought up to date.

Please fill out the enclosed Mine Owner's Report form with as complete detail as possible and attach copies of reports, maps, assay returns, shipment returns or other data which you have not sent us before and which might interest a prospective buyer in looking at the property.

*Frank P. Knight*

FRANK P. KNIGHT,  
Director.

Enc: Mine Owner's Report

# DEPARTMENT OF MINERAL RESOURCES

STATE OF ARIZONA

## FIELD ENGINEERS REPORT

Mine ✓ Copper Ace Mining Co.

Date December 17, 1958

District Walnut Grove, Yavapai

Engineer Travis P. Lane

Subject: Visit - Nov. 24, 1958

The property comprises 10 unpatented claims and a mill site located approximately 7 miles easterly from Kirkland Junction.

Owner: Mr. B. M. Ramsey ✓ & Brother

A Mr. Switzer of Long Beach is financing the development apparently on a partnership arrangement with the owner. Mr. M. P. Sampson of Bagdad is the engineer. He and two men were working at the time of this visit.

The development consists of a considerable amount of bulldozer trenching and cuts in the overburden on the crests and upper slopes of a group of low rolling hills. The country rock is granite porphyry apparently intersected by occasional seams of copper mineralization which have thrown out some float boulders. The objective of the work is to uncover the source of the float hoping that it will be a deposit of economic importance.

An old shaft near these claims shows some copper staining in the dump. No information is available regarding its history except that it is rumored to have been sunk to a depth of 320' in 1903, with some production (?) of gold-copper ore. It is said to be on State land.



Mr. Al Avolock  
Walker,  
Arizona

No Such Post Office  
In Arizona (b)



DEPARTMENT OF MINERAL RESOURCES

STATE OF ARIZONA

FIELD ENGINEERS REPORT

Mohawk

Mine Copper Ace Mining Co.

Date December 17, 1958

District Walnut Grove, Yavapai

Engineer Travis P. Lane

Subject: Visit - Nov. 24, 1958

The property comprises 10 unpatented claims and a mill site located approximately 7 miles easterly from Kirkland Junction.

Owner: Mr. B. M. Ramsey

A Mr. Switzer of Long Beach is financing the development apparently on a partnership arrangement with the owner. Mr. M. P. Sampson of Bagdad is the engineer. He and two men were working at the time of this visit.

The development consists of a considerable amount of bulldozer trenching and cuts in the overburden on the crests and upper slopes of a group of low rolling hills. The country rock is granite porphyry apparently intersected by occasional seams of copper mineralization which have thrown out some float boulders. The objective of the work is to uncover the source of the float hoping that it will be a deposit of economic importance.

An old shaft near these claims shows some copper staining in the dump. No information is available regarding its history except that it is rumored to have been sunk to a depth of 320' in 1903, with some production (?) of gold-copper ore. It is said to be on State land.

DEPARTMENT OF MINERAL RESOURCES

STATE OF ARIZONA

FIELD ENGINEERS REPORT

Mine Mohawk  
District Walnut Grove, Yavapai County  
Subject: Visit Jan. 30, 1959

Date February 27, 1959  
Engineer Travis P. Lane

The owners, B. M. Ramsey and his brother, are working at the property. The heavy trenching and bulldozer cutting at many places on the property proved disappointing and operations were transferred to the old vertical shaft on a part of the property.

Here a cut has been run into the hill on the vein for a distance of 80' beginning a short distance from the collar of the shaft. The vein strikes about E-W and dips steeply south. The shaft has been cleared to a depth of about 65' and the vein exposed on a level at 50'. The vein shows strongly for 140' (to a cave) on the level and, as in the cut, shows a width about 6' with a 6" to 12" footwall streak of quartz showing heavy pyrite, limonite and hematite mineralization, with some chrysocolla, embolite (?) and other oxidized minerals. The streak pans some gold. No assays were available.

The operators plan to cement the collar of the shaft and clean out to bottom, 250' (?). A level is reported at 200'.

A Mr. Blount, who conducts a welding business in Prescott, worked at the property with his brother (now deceased) in 1902. He states that the original work was done on the surface before that time by a Mr. Pierce, who shipped 2 cars of ore with a total value (principally silver) of \$5000.00 (?). A Mr. Gaylord sank the shaft but apparently made no production. It is said that he dropped the project when he "struck it rich" in Goldfield, Nevada.

*Copper R. H. Mining Co.*

DEPARTMENT OF MINERAL RESOURCES

STATE OF ARIZONA

FIELD ENGINEERS REPORT

Mine Mohawk  
District Walnut Grove, Yavapai County  
Subject: Visit Jan. 30, 1959

Date February 27, 1959

Engineer Travis P. Lane

The owners, B. M. Ramsey and his brother, are working at the property. The heavy trenching and bulldozer cutting at many places on the property proved disappointing and operations were transferred to the old vertical shaft on a part of the property.

Here a cut has been run into the hill on the vein for a distance of 80' beginning a short distance from the collar of the shaft. The vein strikes about E-W and dips steeply south. The shaft has been cleared to a depth of about 65' and the vein exposed on a level at 50'. The vein shows strongly for 140' (to a cave) on the level and, as in the cut, shows a width about 6' with a 6" to 12" footwall streak of quartz showing heavy pyrite, limonite and hematite mineralization, with some chrysocolla, embolite (?) and other oxidized minerals. The streak pans some gold. No assays were available.

The operators plan to cement the collar of the shaft and clean out to bottom, 250' (?). A level is reported at 200'.

A Mr. Blount, who conducts a welding business in Prescott, worked at the property with his brother (now deceased) in 1902. He states that the original work was done on the surface before that time by a Mr. Pierce, who shipped 2 cars of ore with a total value (principally silver) of \$5000.00 (?). A Mr. Gaylord sank the shaft but apparently made no production. It is said that he dropped the project when he "struck it rich" in Goldfield, Nevada.