



CONTACT INFORMATION

Mining Records Curator
Arizona Geological Survey
1520 West Adams St.
Phoenix, AZ 85007
602-771-1601
<http://www.azgs.az.gov>
inquiries@azgs.az.gov

The following file is part of the

Arizona Department of Mines and Mineral Resources Mining Collection

ACCESS STATEMENT

These digitized collections are accessible for purposes of education and research. We have indicated what we know about copyright and rights of privacy, publicity, or trademark. Due to the nature of archival collections, we are not always able to identify this information. We are eager to hear from any rights owners, so that we may obtain accurate information. Upon request, we will remove material from public view while we address a rights issue.

CONSTRAINTS STATEMENT

The Arizona Geological Survey does not claim to control all rights for all materials in its collection. These rights include, but are not limited to: copyright, privacy rights, and cultural protection rights. The User hereby assumes all responsibility for obtaining any rights to use the material in excess of "fair use."

The Survey makes no intellectual property claims to the products created by individual authors in the manuscript collections, except when the author deeded those rights to the Survey or when those authors were employed by the State of Arizona and created intellectual products as a function of their official duties. The Survey does maintain property rights to the physical and digital representations of the works.

QUALITY STATEMENT

The Arizona Geological Survey is not responsible for the accuracy of the records, information, or opinions that may be contained in the files. The Survey collects, catalogs, and archives data on mineral properties regardless of its views of the veracity or accuracy of those data.

PRINTED: 03/06/2003

ARIZONA DEPARTMENT OF MINES AND MINERAL RESOURCES AZMILS DATA

PRIMARY NAME: MINNIE SMITH

ALTERNATE NAMES:

SANTA CRUZ COUNTY MILS NUMBER: 175

LOCATION: TOWNSHIP 23 S RANGE 16 E SECTION 18 QUARTER W2
LATITUDE: N 31DEG 25MIN 39SEC LONGITUDE: W 110DEG 44MIN 32SEC
TOPO MAP NAME: LOCHIEL - 15 MIN

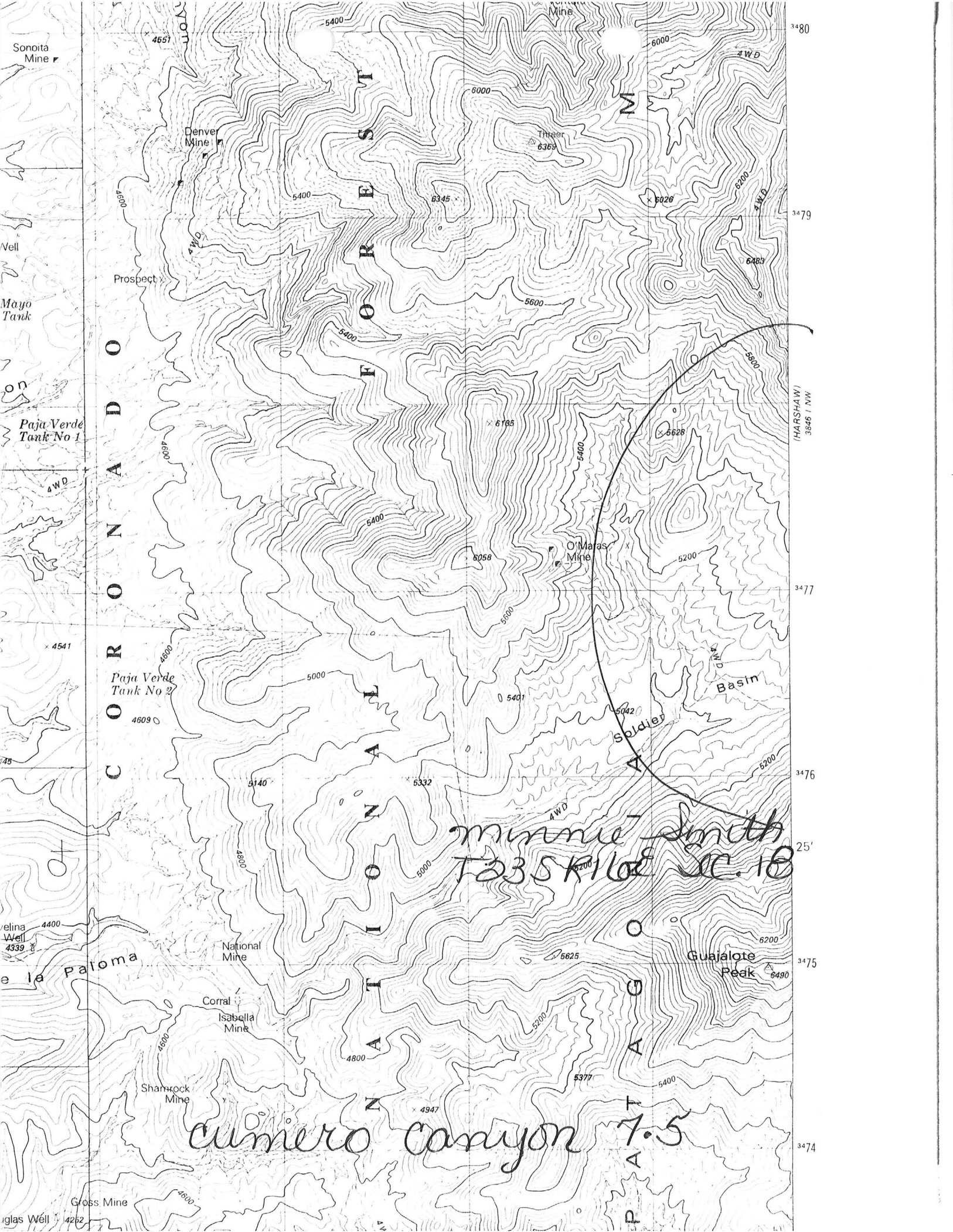
CURRENT STATUS: EXP PROSPECT

COMMODITY:

GOLD
SILVER
COPPER

BIBLIOGRAPHY:

USBM FIELD NOTES AU23
LENON, BOB, 1947, PATAGONIA CLAIM MAP
ADMMR MINNIE SMITH FILE



CORONADO

NATIONAL MONUMENT

minnie Smith
T35K162 AC. 18

Cumbre Canyon 7.5

(HARSHAW)
3846 T. NW

3475

3474

25'

3476

3477

3479

3480

Sonota Mine

Denver Mine

Tinaja Mine

Vell

Prospect

Mayo Tank

Paja Verde Tank No 1

4511

4609

elina Well
4339

Paloma

National Mine

Corral
Isabella Mine

Shamrock Mine

Aglas Well
4262

Gross Mine

Guajalote Peak

Soldier Basin

7.5

18

MINNIE SMITH

9/84

SANTA CRUZ COUNTY
PATAGONIA DISTRICT
T23S R16E Sec. 18

MILS Santa Cruz Index #175

USGS Bull. 582 (general)

USBM "U" File

Cumero Canyon 7.5 (included in file)

*GENERAL REFERENCES

- REFERENCE 1 F1 < USBM FILES, MINNIE SMITH MINE >
- REFERENCE 2 F2 < ABGMT CLIPPINGS FILE, MINNIE SMITH MINE >
- REFERENCE 3 F3 < ABGMT FILES, STANTON B. KEITH >
- REFERENCE 4 F4 < SIMONS, FRANK S, 1974 GEOLOGIC MAP AND SECTIONS OF THE NOGALES AND LOCHIEL QUADRANGLES, SANTA CRUZ COUNTY, ARIZONA; USGS MAP I-762 (1:48000) >

F5 < SCHRADER, F.C., 1915, USGS BULL. 582 (GENERAL REFERENCE) >

K5 < (?) PORPHYRY TO NORTH AND GRANDDIORITE TO SOUTH >

N5 < ROCK IN FAULT FISSURES CUTTING DIORITE AND MONZONITE >

N75 < ALUNITE, PYRITE, AND TOURMALINE >

N80 < INTRUSION >

miles # 175

U.S. CRIB-SITE FORM

RECORD IDENTIFICATION

RECORD NUMBER B10 < _____ > RECORD TYPE B20 < X, I, M > DEPOSIT NUMBER B40 < _____ >

REPORT DATE G1 < 8.2.04 > INFORMATION SOURCE B30 < 1.2 > FILE LINK IDENT. B50 < USBM-0040230235 >

REPORTER (SUPERVISOR) G2 < CALDER, SUSAN R. > (last, first, middle initial) (last, first, middle initial)

REPORTER AFFILIATION G5 < ABGMT > SITE NAME A10 < MINNIE SMITH MINE >

SYNONYMS A11 < _____ >

LOCATION

MINING DISTRICT/AREA A30 < PATAGONIA DISTRICT >

COUNTY A60 < SANTA CRUZ > STATE A50 < A.Z > COUNTRY A40 < U.S. >

PHYSIOGRAPHIC PROV A63 < 1.3 >

DRAINAGE AREA A62 < 1.505.03.01.1. LOWER COLORADO >

QUADRANGLE NAME A90 < HARSHAW (1948) > LAND STATUS A64 < 4.1.1.1. (1979) >

SECOND QUAD NAME A92 < LOCHIEL (1958) > QUADRANGLE SCALE A100 < 24000 >

ELEVATION A107 < 1344.1 M > SECOND QUAD SCALE A91 < 62500 >

UTM ACCURACY GEODETIC

NORTHING A120 < 3476825 > ACCURATE ACC (circle) LATITUDE A70 < 31-25-39.N >

EASTING A130 < 524500 > ESTIMATED EST < _____ > LONGITUDE A80 < 110-44-32.W >

ZONE NUMBER A110 < 11.2 >

CADASTRAL

TOWNSHIP(S) A77 < 0.235 > RANGE(S) A78 < 0.16.E >

SECTION(S) A79 < 18 >

SECTION FRACTION(S) A76 < CENTER OF W2 OF W2 >

MERIDIAN(S) A81 < GILA AND SALT RIVER >

POSITION FROM NEAREST PROMINENT LOCALITY A82 < 3.5 MILES SW OF HARSHAW >

LOCATION COMMENTS A83 < 1.0 MILE WEST OF MORNING GLORY MINE IN SOLDIER BASIN >

* ESSENTIAL INFORMATION
+ ESSENTIAL SOMETIMES OR HIGHLY RECOMMENDED

COMMODITY INFORMATION

*COMMODITIES PRESENT C10 < Cu, Pb, Au, Zn, Ag, U, V, Ni, Co, Mn, Fe, S, P, K, Na, Cl, Br, I, F, Li, Be, B, Al, Si, Ca, Mg, Sr, Ba, Pb, Bi, Te, Se, Mo, W, Re, Os, Ir, Pt, Au, Hg, Tl, Pb, Bi, Po, At, Rn, Fr, Ra, Ac, Th, Pa, U, Np, Pu, Am, Cm, Bk, Cf, Es, Fm, Md, No, Lr >
 *ORE MINERALS C30 < UNKNOWN >
 *COMMODITY SUBTYPES C41 < >
 *GEN. ANALYTICAL DATA C43 < >
 *COM. INFO. COMMENTS C50 < >

*SIGNIFICANCE

	PRODUCER	NON-PRODUCER
MAJOR PRODUCTS	MAJOR < Ag, Pb, Au, Zn, Ag, U, V, Ni, Co, Mn, Fe, S, P, K, Na, Cl, Br, I, F, Li, Be, B, Al, Si, Ca, Mg, Sr, Ba, Pb, Bi, Te, Se, Mo, W, Re, Os, Ir, Pt, Au, Hg, Tl, Pb, Bi, Po, At, Rn, Fr, Ra, Ac, Th, Pa, U, Np, Pu, Am, Cm, Bk, Cf, Es, Fm, Md, No, Lr >	MAIN COMMODITIES PRESENT C11 < >
MINOR PRODUCTS	MINOR < Cu, Pb, Au, Zn, Ag, U, V, Ni, Co, Mn, Fe, S, P, K, Na, Cl, Br, I, F, Li, Be, B, Al, Si, Ca, Mg, Sr, Ba, Pb, Bi, Te, Se, Mo, W, Re, Os, Ir, Pt, Au, Hg, Tl, Pb, Bi, Po, At, Rn, Fr, Ra, Ac, Th, Pa, U, Np, Pu, Am, Cm, Bk, Cf, Es, Fm, Md, No, Lr >	MINOR COMMODITIES PRESENT C12 < >
POTENTIAL PRODUCTS	POTEN < >	
OCCURRENCES	OCCUR < >	OCCURRENCES OCCUR < >

*PRODUCTION

	PRODUCER	NON-PRODUCER
PRODUCTION (YES) (circle)	PRODUCTION SIZE (SML) (MED) (LGE) (circle one)	PRODUCTION UND NO (circle one)

*STATUS

EXPLORATION OR DEVELOPMENT

	PRODUCER	NON-PRODUCER
	STATUS AND ACTIVITY A20 < U >	STATUS AND ACTIVITY A20 < >

*DISCOVERER L20 < >
 *YEAR OF DISCOVERY L10 < > *NATURE OF DISCOVERY L30 < > *YEAR OF FIRST PRODUCTION L40 < 1934 > *YEAR OF LAST PRODUCTION L45 < 1939 >
 *PRESENT/LAST OWNER A12 < CHARLES R. SICKLES (1939) >
 *PRESENT/LAST OPERATOR A13 < A.A. BACON (1939) >
 *EXPL./DEV.COMMENTS L110 < OPERATORS INCLUDED JACK BOSTWICK (1934) >

DESCRIPTION OF DEPOSIT

*DEPOSIT TYPE(S) C40 < VEIN/SHEAR ZONE >
 *DEPOSIT FORM/SHAPE M10 < TABULAR; IRREGULAR >
 *DEPTH TO TOP M20 < > *UNITS M21 < > *MAXIMUM LENGTH M40 < 2 > *UNITS M41 < MILES >
 *DEPTH TO BOTTOM M30 < > *UNITS M31 < > *MAXIMUM WIDTH M50 < 1.3 > *UNITS M51 < FT >
 *DEPOSIT SIZE M15 (SMALL) M15 (MEDIUM) M15 (LARGE) (circle one) *MAXIMUM THICKNESS M60 < 18 > *UNITS M61 < FT >
 *STRIKE M70 < > *DIP M80 < VERTICAL >
 *DIRECTION OF PLUNGE M100 < > *PLUNGE M90 < >
 *REP. DESC. COMMENTS M110 < >

DESCRIPTION OF WORKINGS

*Workings are: SURFACE M120 UNDERGROUND M130 BOTH (M140) (circle one)
 *DEPTH BELOW SURFACE M160 < > *UNITS M161 < > *OVERALL LENGTH M190 < > *UNITS M191 < >
 *LENGTH OF WORKINGS M170 < > *UNITS M171 < > *OVERALL WIDTH M200 < > *UNITS M201 < >
 *DESC. OF WORK. COM. M220 < DEVELOPMENTS INCLUDED A 30 FT INCLINE, 125 FT DRIFT, 2 SHALLOW OPEN CUTS >

GEOLOGY

*AGE OF HOST ROCK(S) K1 < TERT. 58 ± 5 m.y. (SIMONS, FS, 1974) >
 *HOST ROCK TYPE(S) K1A < BIOTITE-HORNBLende GRANODIORITE >
 *AGE OF IGNEOUS ROCK(S) K2 < TR. I - JUR. >
 *IGNEOUS ROCK TYPE(S) K2A < MONZONITE (?) PORPHYRY >
 *AGE OF MINERALIZATION K3 < CRET. TERT. >
 *PERT. MINERALS (NOT ORE) K4 < QUARTZ GANGUE >
 *ORE CONTROL/LOCUS K5 < VERTICAL QUARTZ VEIN IN SHEAR ZONE, AT OR NEAR CONTACT BETWEEN MONZONITE >
 *MAJ. REG. TRENDS/STRUCT. N5 < E-W AND NE TRENDING QUARTZ VEINS AND ASSOCIATED BANDS OF CRUSHED MINERALIZED >
 *TECTONIC SETTING N15 < SOUTH END OF THUNDER MINE FAULT BLOCK >
 *SIGNIFICANT LOCAL STRUCT. N70 < >
 *SIGNIFICANT ALTERATION N75 < MONZONITE (?) PORPHYRY IS LOCALLY MUCH ALTERED TO QUARTZ, SERICITE KAOLINITE >
 *PROCESS OF CONC./ENRICH. N80 < REGIONAL MINERALIZATION ACCOMPANIED OR FOLLOWED INTRUSION OF GRANODIORITE >
 *FORMATION AGE N30 < >
 *FORMATION NAME N30A < >
 *SECOND FM AGE N35 < >
 *SECOND FM NAME N35A < >
 *IGNEOUS UNIT AGE N50 < >
 *IGNEOUS UNIT NAME N50A < >
 *SECOND IG. UNIT AGE N55 < >
 *SECOND IG. UNIT NAME N55A < >
 *GEOLOGY COMMENTS N85 < >

GENERAL COMMENTS

GENERAL COMMENTS GEN < >