



CONTACT INFORMATION

Mining Records Curator
Arizona Geological Survey
1520 West Adams St.
Phoenix, AZ 85007
602-771-1601
<http://www.azgs.az.gov>
inquiries@azgs.az.gov

The following file is part of the

Arizona Department of Mines and Mineral Resources Mining Collection

ACCESS STATEMENT

These digitized collections are accessible for purposes of education and research. We have indicated what we know about copyright and rights of privacy, publicity, or trademark. Due to the nature of archival collections, we are not always able to identify this information. We are eager to hear from any rights owners, so that we may obtain accurate information. Upon request, we will remove material from public view while we address a rights issue.

CONSTRAINTS STATEMENT

The Arizona Geological Survey does not claim to control all rights for all materials in its collection. These rights include, but are not limited to: copyright, privacy rights, and cultural protection rights. The User hereby assumes all responsibility for obtaining any rights to use the material in excess of "fair use."

The Survey makes no intellectual property claims to the products created by individual authors in the manuscript collections, except when the author deeded those rights to the Survey or when those authors were employed by the State of Arizona and created intellectual products as a function of their official duties. The Survey does maintain property rights to the physical and digital representations of the works.

QUALITY STATEMENT

The Arizona Geological Survey is not responsible for the accuracy of the records, information, or opinions that may be contained in the files. The Survey collects, catalogs, and archives data on mineral properties regardless of its views of the veracity or accuracy of those data.

PRINTED: 03/06/2003

ARIZONA DEPARTMENT OF MINES AND MINERAL RESOURCES AZMILS DATA

PRIMARY NAME: MINE MTN.

ALTERNATE NAMES:

MARICOPA COUNTY MILS NUMBER: 498

LOCATION: TOWNSHIP 4 N RANGE 9 E SECTION 9 QUARTER E2
LATITUDE: N 33DEG 42MIN 12SEC LONGITUDE: W 111DEG 25MIN 40SEC
TOPO MAP NAME: MINE MOUNTAIN - 7.5 MIN

CURRENT STATUS: RAW PROSPECT

COMMODITY:
URANIUM

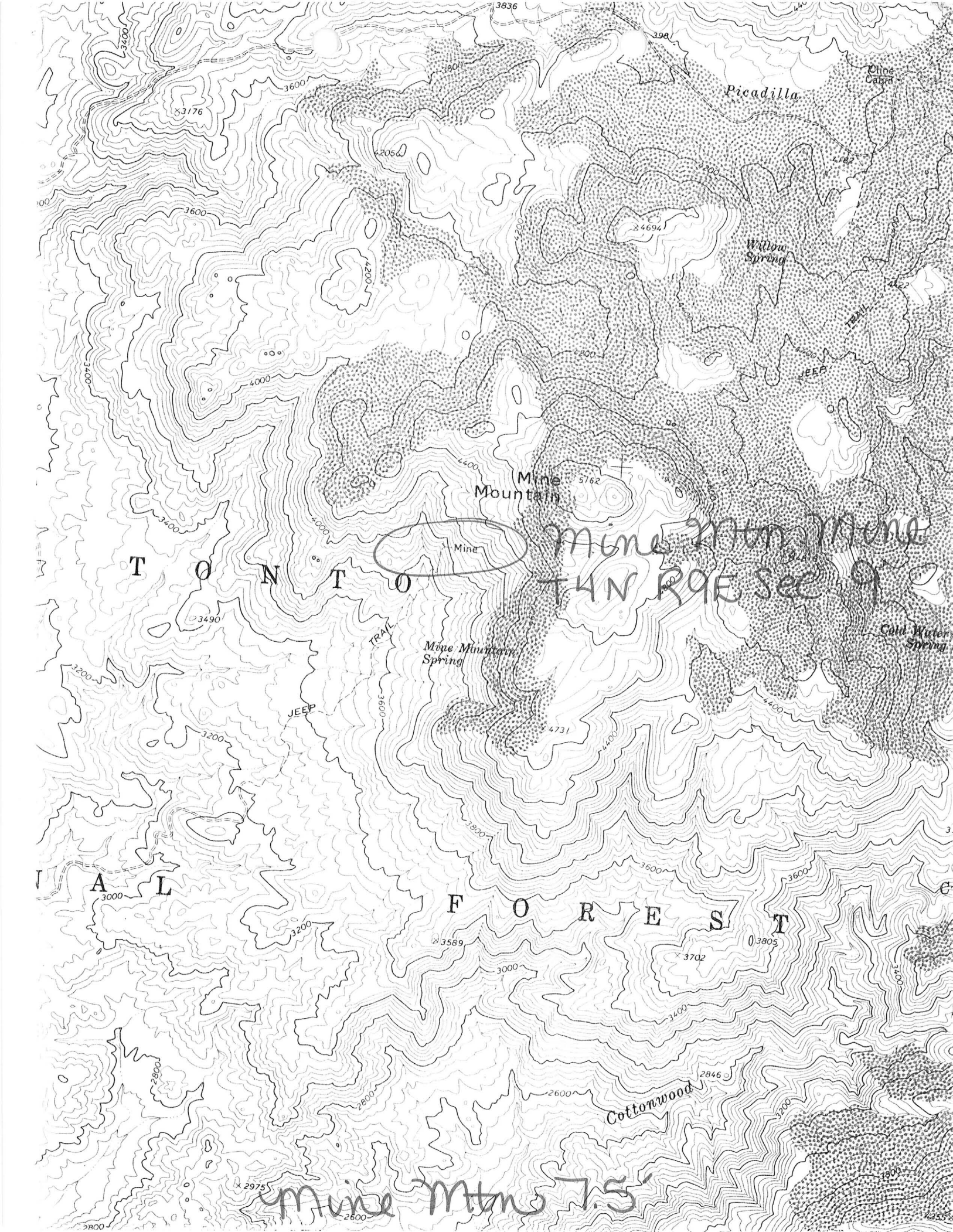
BIBLIOGRAPHY:
USGS MINE MOUNTAIN QUAD
ADMMR MINE MTN FILE

MINE MOUNTAIN MINE

MARICOPA COUNTY
ROOSEVELT DIST
T4N R9E Sec. 9

MILS Maricopa County Index #498

MINE MTN 7.5' Topo (included in file)



Picadilla

Willow Spring

Mine Mountain

Moose Mountain Spring

Cottonwood

TANTO

Mine Mtn Mine
T4N R9E Sec 9

AL

FOREST

mine Mtns 7.5'

3176

4050

4694

5162

Mine

3490

4731

3589

3702

3805

2880

2975

2846

1800

4255

ARIZONA DEPARTMENT OF MINER RESOURCES

Mineral Building, Fairgrounds

Phoenix, Arizona

- 1. Information from: Benton M. Lee Pres.
- Address: 3302-W Manor Dr. Phx
- 2. Mine: Mine Mt. 3. No. of Claims - Patented Rattler 1st A-11 Unpatented 10
- 4. Location: 51 mi from Phx Sup. Lake Rd. NW side of Mine Mt.
- 5. Sec 9 Tp 4N Range 9E 6. Mining District unknown.
- 7. Owner: _____
- 8. Address: _____
- 9. Operating Co.: RLJ Corp Inc 2-14-69 (Riz Corp)
- 10. Address: 3302-W Manor Dr. Phx 85014
- 11. President: Mr Lee 12. Gen. Mgr.: John Rothermel ^{U. Pre} ^{AM 54647}
- 13. Principal Metals: U₃O₈ 14. No. Employed: Edward ^{E. Jennings Sec. Treas.} ^{contract drill.}
- 15. Mill, Type & Capacity: _____
- 16. Present Operations: (a) Down (b) Assessment work (c) Exploration
(d) Production (e) Rate _____ tpd.
- 17. New Work Planned: Core drilling by Leaqueat.
Rike O'Leary emp Geo - Consultant.
- 18. Miscl. Notes: Fissure in Precambrian granite, highly oxidized material, young Rothermel boys said on Mar. 17, that material would assay .24 to .3 % U₃O₈. Mineral is not recognizable.

Date: 3-18-69

F. Johnson
(Signature) (Field Engineer)