



CONTACT INFORMATION

Mining Records Curator
Arizona Geological Survey
1520 West Adams St.
Phoenix, AZ 85007
602-771-1601
<http://www.azgs.az.gov>
inquiries@azgs.az.gov

The following file is part of the

Arizona Department of Mines and Mineral Resources Mining Collection

ACCESS STATEMENT

These digitized collections are accessible for purposes of education and research. We have indicated what we know about copyright and rights of privacy, publicity, or trademark. Due to the nature of archival collections, we are not always able to identify this information. We are eager to hear from any rights owners, so that we may obtain accurate information. Upon request, we will remove material from public view while we address a rights issue.

CONSTRAINTS STATEMENT

The Arizona Geological Survey does not claim to control all rights for all materials in its collection. These rights include, but are not limited to: copyright, privacy rights, and cultural protection rights. The User hereby assumes all responsibility for obtaining any rights to use the material in excess of "fair use."

The Survey makes no intellectual property claims to the products created by individual authors in the manuscript collections, except when the author deeded those rights to the Survey or when those authors were employed by the State of Arizona and created intellectual products as a function of their official duties. The Survey does maintain property rights to the physical and digital representations of the works.

QUALITY STATEMENT

The Arizona Geological Survey is not responsible for the accuracy of the records, information, or opinions that may be contained in the files. The Survey collects, catalogs, and archives data on mineral properties regardless of its views of the veracity or accuracy of those data.

PRINTED: 07-13-2012

ARIZONA DEPARTMENT OF MINES AND MINERAL RESOURCES AZMILS DATA

PRIMARY NAME: MILE WIDE

ALTERNATE NAMES:
COPPER KING

PIMA COUNTY MILS NUMBER: 15

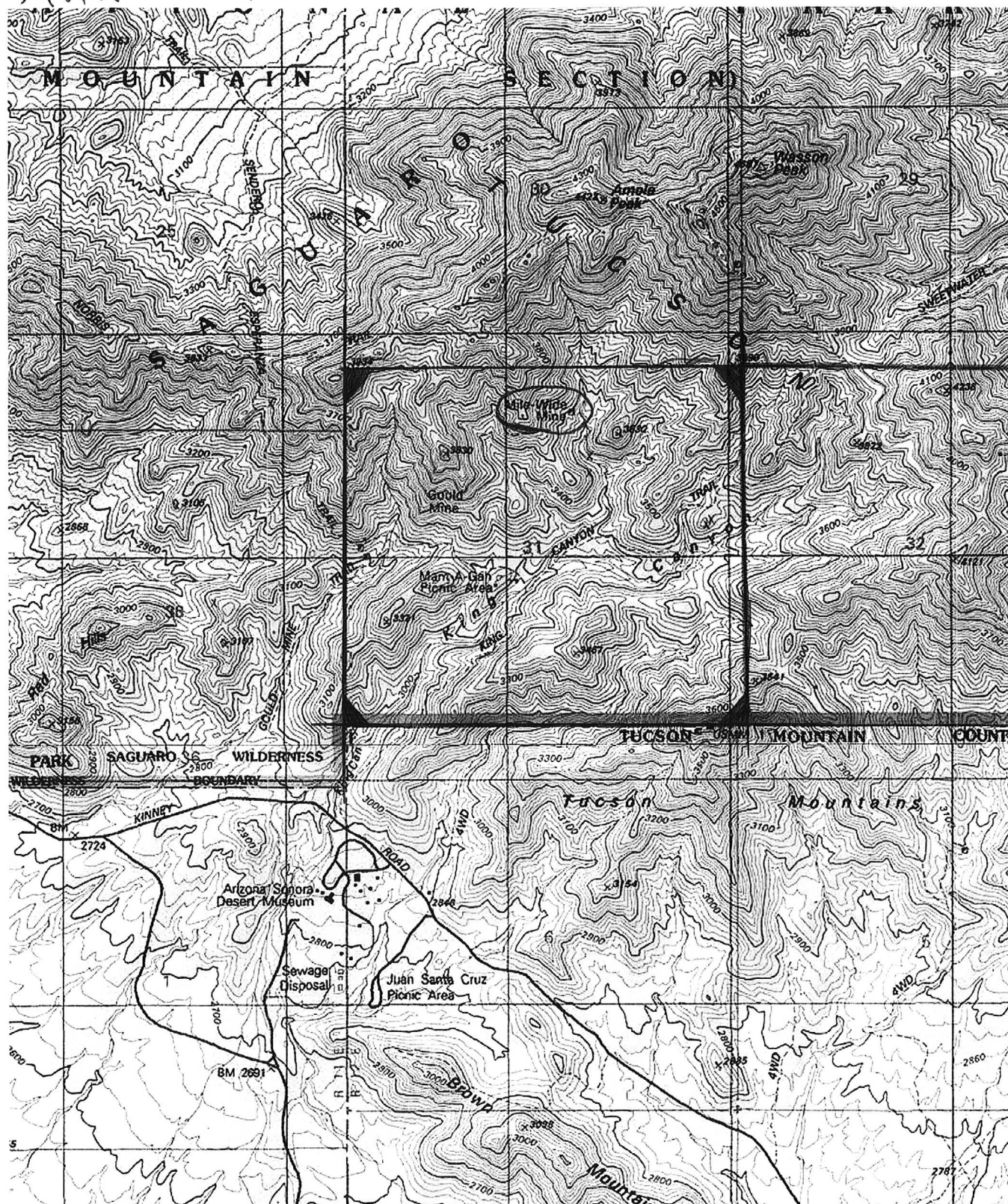
LOCATION: TOWNSHIP 13 S RANGE 12 E SECTION 31 QUARTER NE
LATITUDE: N 32DEG 15MIN 48SEC LONGITUDE: W 111DEG 09MIN 20SEC
TOPO MAP NAME: AVRA - 7.5 MIN

CURRENT STATUS: PAST PRODUCER

COMMODITY:
COPPER SULFIDE
COPPER OXIDE
SILVER
GOLD LODE

BIBLIOGRAPHY:
AZBM BULL. 189, P. 84, 1974
AZBM BULL. 106, P. 6 & 18
AZBM BULL. 140, P. 98
AZ MINING JOURNAL, 10/1917 P. 22, 6./1918 P38
ADMMR "U" FILE CU 54
SEE ADMMR GOULD MINE FILE
ADMMR MILE WIDE FILE

Aura - 7.5 min



N 32 15' 47" W 111 09' 20"
Mile Wide

MILE WIDE MINE
COPPER KING MINE

PIMA COUNTY
AMOLE DIST.
T13S, R12E, Sec 31


REFERENCES

ABM bull. 106, p. 6 (Copper King or Mile Wide)
ABM bull. 140, p. 98 (Mile Wide)

Arizona Mining Journal Issue of Oct 1917 p. 22 ;
June, 1918, p. 38

MILE COPPER KING MINE

*Success citation
Oct 14, 1918*



December 29, 1943

Mr. A. C. Nebeker, Technical Advisor
War Production Board
Security Building
Phoenix, Arizona

Dear Neb:

Subject: Vreeland and Ramsey, Housing Project

I have received the following memorandum from our engineer, George A. Ballam in Tucson, on this subject:

"Vreeland and Ramsey, operators of the Mile Wide Mine, are liquidating and returning all property purchased to the R.F.C. They disclaim any knowledge of any housing project as indicated in your memo. They know of no other Vreeland and Ramsey in the district who might be concerned.

"There is so much migration of operators and interlocking operations and so forth that it may be that Ramsey has some other irons in the fire, but his partner on the Mile Wide, L. M. Vreeland, knows nothing about the proposed housing project."

I hope this will give you the information you want.

Yours very truly,

J. S. Coupal, Director

JSC:LP

December 20, 1943

MEMORANDUM

VREELAND & RAMSLEY MINING CO.
See former memo

TO: George A. Ballam

FROM: J. S. Coupal

I have just talked with Nebeker today and he is holding up a reply on this subject.

Vreeland and Ramsley Mining Company have made application for house construction at their property through the Los Angeles office and it has been referred to Nebeker for further information.

Can you try to get me some details of the mine and the present operations?

The property is located about 12 miles northwest of Tucson.

JSC:LP

December 11, 1943

MEMORANDUM

TO: George A. Ballam

FROM: J. S. Coupal

I have just had a phone call from Nebeker and he would like to get full information of the present status of the operations on, believe it must be, the Mile Wide property owned by Vreeland and Ramsley (our records show Ben Ramsey).

Nebeker states that they are making application for a housing project and he would like to know how substantial the project is, roughly what they are doing and a general picture so that he might make a sound determination.

Please rush.

JSC:LP

PHILIP WISEMAN
1206 PACIFIC MUTUAL BLDG.
LOS ANGELES



July 15, 1943

Mr. Earl F. Hastings
413 Home Builders Building
Phoenix, Arizona

Dear Mr. Hastings:

I received from Mr. Bollweg word that at the present time he could not give consideration to a position with us.

In looking over some old files, I found some data regarding what was known as the MILE WIDE COPPER COMPANY, in Pima County, Arizona.

The property was located about 20 miles or so out from Tucson and adjacent to or near the GOULD MINE.

Would any of your records contain any information as to what became of the property and whether or not it was worked out or still has possibilities, and, if so, the name of the owner.

Any information you can give me will be appreciated. I think that Mr. Charles F. Willis possibly can give you some information about it in case you have no file on it.

Yours very truly,

PW:RC

PHILIP WISEMAN

March 31, 1958

AXEL L. JOHNSON, Weekly Report says -

✓ LOUIS CARRASCO, 376 W. District, Tucson,
has sold "MILE WIDE" MINE (file)
to BANNER MINING CO.



STATE OF ARIZONA
DEPARTMENT OF MINERAL RESOURCES
MINERAL BUILDING, FAIRGROUNDS
PHOENIX, ARIZONA

NEWS ITEM

Oct. 30, 1951.

By Axel L. Johnson

SOURCE OF INFORMATION ----- Marion L. Thomas, Consulting Eng.

MINE ----- Mile Wide Mine

DISTRICT ----- Amole Mining District

Location On West Side of Tucson Mts.----- 5 miles north of Old Tucson, and 17 miles north-west of Tucson.

Number of claims 12 unpatented claims.

Owners ✓ Robert Scott, 215 E. 19th St., Tucson, Ariz., and his partner, Mr. Kelly.

Operators None. Mine is idle.

Metals Found ✓ Copper

Men Employed None. Mine is idle.

Ore Values Copper about 3.2 %, with 26 % silica, and 13 % lime.

Geology The ore occurs as intrusions in limestone, near the limestone and granite porphyry contact. The copper values are found in three distinct veins in the limestone rock. These veins are parallel to each other, and is an extension of the ~~the~~ same veins as found in the Gould Mine. The copper values are found as chalcocite, with some bornite. Chalcopyrite is also found to some extent.

Old Workings

(1) One shaft --- 325 feet deep. Shaft does not seem to be caved. There is water in the shaft, almost to the top of same.

(2) A few drifts from the shaft on the different levels.

(3) Cross cuts from these drifts.

Past Production No notable production for about 40 years.

Proposed plans Owners would have like to get a government loan for unwatering and repairing the shaft. As such a loan is problematical, the owners intend now to raise the money themselves and try to get the mine into production as soon as possible.

Special Difficulties Encountered Cost of unwatering and repairing the shaft to get the property back into operation.

Dec. 24, 1943

MEMORANDUM

Vreeland & Ramsey

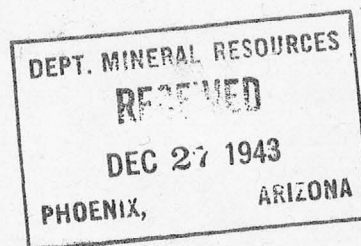
To: Director, Dept. Mineral Resources
From: George A. Ballam

Vreeland & Ramsey, operators of the Mile Wide mine are liquidating and returning all property purchased to The RFC. They disclaim any knowledge of any housing project as indicated in your memo. They know of no other Vreeland & Ramsey in the district who might be concerned. Can you give me further information so that I may run this down?

There is so much migration of operators and interlocking operations, etc., it may be that Ramsey has some other irons in the fire, but his partner on the Mile Wide, L. M. Vreeland, knows nothing about it. Ask Neb what the score is.

Geo.

e



NAME OF MINE: MILE WIDE

COUNTY: PIMA

DISTRICT:

METALS: CU

OPERATOR AND ADDRESS:

MINE STATUS

DATE:

DATE:

Lessee: L.M.Vreeland
Box 2771, Tucson

RFC loan \$5000 Second loan
\$5000

8/43

5 men working

1/44

Shut down Campbell making
arrangements to operate a
and pay RFC 5%--Did not
materialize

3/1/44 Quit

DEPARTMENT OF MINERAL RESOURCES
STATE OF ARIZONA
FIELD ENGINEERS REPORT

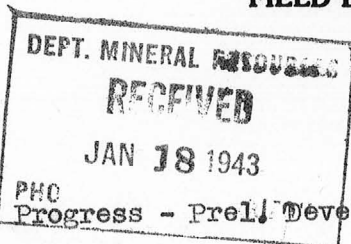
Mine Mile Wide

District Amole

Subject: Report on Progress - Preliminary Development Loan

Date Jan. 14, 1943

Engineer George A. Ballam



A preliminary development loan of \$5000 was granted Vreeland and Campbell, lessees of this property, for the purpose of unwatering and repairing shaft.

The shaft is inclined at about 80° in ore with limestone on the foot and an andesitic schist on the hanging walls. Considerable difficulty was experienced with caving of this schist. As the water was successively lowered they lost the station on the 100 level and had some bad caving on the 200 where the water now is. In addition, they lost a couple of collar sets and had to catch up and retimber. Consequently, the work has been slowed down considerably, in addition to encountering much higher costs than anticipated for labor and timber.

However, the shaft is now in good shape. They intend to leave the water just below the 200' bulkheading off at that point. (The shaft is 400' deep) Good ore is showing in a stope about 60 ft. south of the station on the 200, and Campbell claims at least 1000 tons of ore ~~in this~~ in this stope which he proposes to get to work on as soon as the muck and debris is cleaned out of the drift. The ore I examined is principally chalcopyrite with some oxidation products showing. Ore showing in the shaft up to the 100 is similar but apparently higher in iron. A sample grabbed from the stope ran 8.93% Cu

Since Campbell and Vreeland will have exhausted the RFC funds by the end of this week, they propose to lay off three of their five men, keeping one good miner. Campbell has authority from the supervising engineer to ship as much ore as is readily available. He believes he can have a couple of cars out within the next ten days, and is proceeding accordingly.

Equipment consists of a 25 HP FM hoist, IR 220 portable compressor. There is track in and he is getting a car to day. He is contracting hauling at \$1.75 per ton to Tucson. He has a borrowed pump and will keep it to hold the water down, but apparently it is not making much. I believe these men can make a go of it now, getting out a few cars of 6 or 7% copper, probably shipping to Magma or International, on account of low silica content. They had notified the RFC of their financial condition, but thought they could save time by following the above plan.

Pima Co. authorities have put the road in good condition. (Access also to the neighboring Gould property under same ownership-John Greenwood) Both parties are cooperating to get this ore out as soon as possible, and with no further accidents should be able to get under production at once.

George A. Ballam

MILE WIDE, Pima County, Arizona. Vreeland and Campbell, Lessees, Tucson, Arizona.

An application for a Preliminary Development Loan was made by lessees and recommended by this Department. Recommendation was made on the basis of an assured 3,500 tons of 8% copper ore, with lateral and downward extension extremely probable, all of which would be made quickly available.

In view of general priority difficulty in obtaining equipment the lessees intend renting equipment for rehabilitating the workings. Following this preliminary work it is believed that this property is capable of producing at the rate of 25 tons a day on 120,000 pounds of copper per month, while keeping ahead with development in anticipation of larger production.

This property adjoins the Copper Bell property mentioned elsewhere in this report.

Report by Earl F. Hastings, October 9, 1942, to Copper Branch, War Production Board.

DEPARTMENT OF MINERAL RESOURCES
STATE OF ARIZONA
FIELD ENGINEERS REPORT

Mine ✓ Mile Wide

Date Sept. 28, 1942

District Amole

Engineer George A. Ballam

Subject: Production Possibilities Survey

This property is situated about 18 miles west of Tucson in the Tucson mountains and Amole Min. Dist. It is leased by Vreeland and Campbell from John Greenwood, owner. There are three unpatented claims in the group for which application for a preliminary development loan has been made.

Ore copper, principally as chalcoppyrite with some of the secondary bornite. Replacement in lime which underlies granite porphyry and andesite. Vein dips at 67° East. Development consists of a 400' shaft in ore, un-timbered, with 4 levels. First level, 78' is also opened by shaft 25' and x-cut, from point 300' north of main shaft down in canyon. Water stands at about 200' and there is considerable stoping on this level through to the 78' level.

The lessees intend to unwater, timbering shaft only where necessary. As soon as second level is unwatered they hope to start taking out ore, and from records believe it will run 7% Cu and 3-5 ozs. Ag. Some 70,000# copper was produced from 1916 - 1919.

Campbell is planning on renting equipment, and might be able to make a deal to unwater under contract, as the owner Greenwood is planning on his adjoining property, the Gould, for which loan is also applied for. This would enable him to start production within a month after loan is obtained, increasing small initial production as new faces are opened up.

A good county road, serving the park area, runs within $2\frac{1}{4}$ miles of the property which is accessible by a fair road, washed out after heavy rains, but which the county will repair as soon as operations start on the two properties. There will be ample water for mining operations intended, and domestic purposes can be served from a good well at the ~~sight~~ of Old Tucson, about three miles distant.

This mine should produce 25 tons a day of about 6 - 7% Cu when plans for next 90 days are carried out. Campbell is a good rustler and does not anticipate undue labor difficulty. He is planning on using older men, many of whom have worked for him before. In fact he is getting three off old age pension rolls.

G. A. Ballam

Mile Wide

Sept. 28, 1942

Anole

George A. Ballam

Production Possibilities Survey

This property is situated about 18 miles west of Tucson in the Tucson mountains and Anole Min. Dist. It is leased by Vreeland and Campbell from John Greenwood, owner. There are three unpatented claims in the group for which application for a preliminary development loan has been made.

Ore copper, principally as chalcocite with some of the secondary bornite. Replacement in line which underlies granite porphyry and andesite. Vein dips at 67° East. Development consists of a 400' shaft in ore, un-timbered, with 4 levels. First level, 78' is also opened by shaft 25' and x-cut, from point 300' north of main shaft down in canyon. Water stands at about 200' and there is considerable stoping on this level through to the 78' level.

The lessees intend to unwater, timbering shaft only where necessary. As soon as second level is unwatered they hope to start taking out ore, and from records believe it will run 7% Cu and 3-5 ozs. Ag. Some 70,000# copper was produced from 1916 - 1919.

Campbell is planning on renting equipment, and might be able to make a deal to unwater under contract, as the owner Greenwood is planning on his adjoining property, the Gould, for which loan is also applied for. This would enable him to start production within a month after loan is obtained, increasing small initial production as new faces are opened up.

A good county road, serving the park area, runs within 2½ miles of the property which is accessible by a fair road, washed out after heavy rains, but which the county will repair as soon as operations start on the two properties. There will be ample water for mining operations intended, and domestic purposes can be served from a good well at the side of Old Tucson, about three miles distant.

This mine should produce 25 tons a day of about 6 - 7% Cu when plans for next 90 days are carried out. Campbell is a good rustler and does not anticipate undue labor difficulty. He is planning on using older men, many of whom have worked for him before. In fact he is getting three off old age pension rolls.

G. A. Ballam

Mile Wide

Sept. 28, 1942

Anole

George A. Ballam

Production Possibilities Survey

This property is situated about 18 miles west of Tucson in the Tucson mountains and Anole Min. Dist. It is leased by Vreeland and Campbell from John Greenwood, owner. There are three unpatented claims in the group for which application for a preliminary development loan has been made.

Ore copper, principally as chalcocite with some of the secondary bornite. Replacement in lime which underlies granite porphyry and andesite. Vein dips at 67° East. Development consists of a 400' shaft in ore, un-timbered, with 4 levels. First level, 78' is also opened by shaft 25' and x-cut, from point 300' north of main shaft down in canyon. Water stands at about 200' and there is considerable stoping on this level through to the 78' level.

The lessees intend to unwater, timbering shaft only where necessary. As soon as second level is unwatered they hope to start taking out ore, and from records believe it will run 7% Cu and 3-5 ozs. Ag. Some 70,000# copper was produced from 1916 - 1919.

Campbell is planning on renting equipment, and might be able to make a deal to unwater under contract, as the owner Greenwood is planning on his adjoining property, the Gould, for which loan is also applied for. This would enable him to start production within a month after loan is obtained, increasing small initial production as new faces are opened up.

A good county road, serving the park area, runs within 2½ miles of the property which is accessible by a fair road, washed out after heavy rains, but which the county will repair as soon as operations start on the two properties. There will be ample water for mining operations intended, and domestic purposes can be served from a good well at the sight of Old Tucson, about three miles distant.

This mine should produce 25 tons a day of about 6 - 7% Cu when plans for next 90 days are carried out. Campbell is a good rustler and does not anticipate undue labor difficulty. He is planning on using older men, many of whom have worked for him before. In fact he is getting three off old age pension rolls.

G. A. Ballam

Mile Wide

Sept. 28, 1942

Anole

George A. Ballam

Production Possibilities Survey

This property is situated about 18 miles west of Tucson in the Tucson mountains and Anole Min. Dist. It is leased by Vreeland and Campbell from John Greenwood, owner. There are three unpatented claims in the group for which application for a preliminary development loan has been made.

Ore copper, principally as chalcocite with some of the secondary bornite. Replacement in line which underlies granite porphyry and andesite. Vein dips at 67° East. Development consists of a 400' shaft in ore, un-timbered, with 4 levels. First level, 78' is also opened by shaft 25' and x-out, from point 500' north of main shaft down in canyon. Water stands at about 800' and there is considerable stoping on this level through to the 78' level.

The lessees intend to unwater, timbering shaft only where necessary. As soon as second level is unwatered they hope to start taking out ore, and from records believe it will run 7% Cu and 2-3 ozs. Ag. Some 70,000# copper was produced from 1916 - 1919.

Campbell is planning on renting equipment, and might be able to make a deal to unwater under contract, as the owner Greenwood is planning on his adjoining property, the Gould, for which loan is also applied for. This would enable him to start production within a month after loan is obtained, increasing small initial production as new faces are opened up.

A good county road, serving the park area, runs within 2½ miles of the property which is accessible by a fair road, washed out after heavy rains, but which the county will repair as soon as operations start on the two properties. There will be ample water for mining operations intended, and domestic purposes can be served from a good well at the side of Old Tucson, about three miles distant.

This mine should produce 25 tons a day of about 6 - 7% Cu when plans for next 90 days are carried out. Campbell is a good rustler and does not anticipate undue labor difficulty. He is planning on using older men, many of whom have worked for him before. In fact he is getting three off old age pension rolls.

G. A. Ballam

DEPARTMENT OF MINERAL RESOURCES
STATE OF ARIZONA
FIELD ENGINEERS REPORT

Mine Mile Wide

Date Sept. 28, 1942

District Amole

Engineer George A. Ballam

Subject: Production Possibilities Survey

This property is situated about 18 miles west of Tucson in the Tucson mountains and Amole Min. Dist. It is leased by Vreeland and Campbell from John Greenwood, owner. There are three unpatented claims in the group for which application for a preliminary development loan has been made.

Ore copper, principally as chalcopyrite with some of the secondary bornite. Replacement in lime which underlies granite porphyry and andesite. Vein dips at 67° East. Development consists of a 400' shaft in ore, untimbered, with 4 levels. First level, 78' is also opened by shaft 25' and x-cut, from point 300' north of main shaft down in canyon. Water stands at about 200' and there is considerable stoping on this level through to the 78' level.

The lessees intend to unwater, timbering shaft only where necessary. As soon as second level is unwatered they hope to start taking out ore, and from records believe it will run 7% Cu and 3 - 5 ozs. Ag. Some 70,000# copper was produced from 1916 - 1919.

Campbell is planning on renting equipment, and might be able to make a deal to unwater under contract, as the owner Greenwood is planning on his adjoining property, the Gould, for which loan is also applied for. This would enable him to start production within a month after loan is obtained, increasing small initial production as new faces are opened up.

A good county road, serving the park area, runs within $2\frac{1}{4}$ miles of the property which is accessible by a fair road, washed out after heavy rains, but which the county will repair as soon as operations start on the two properties. There will be ample water for mining operations intended, and domestic purposes can be served from a good well at the sight of Old Tucson, about three miles distant.

This mine should produce 25 tons a day of about 6 - 7% Cu when plans for next 90 days are carried out. Campbell is a good rustler and does not anticipate undue labor difficulty. He is planning on using older men, many of whom have worked for him before. In fact he is getting three off old age pension rolls.

Geo Ballam

**DEPARTMENT OF MINERAL RESOURCES
STATE OF ARIZONA
FIELD ENGINEERS REPORT**

Mine **MILE WIDE**

Date **September 26, 1942**

District **AMOLE**

Engineer **Earl F. Hastings**

Subject: **Reconstruction Finance Corporation
Preliminary Development Loan**

Docket No.

C-ND-54

Date Application Received

September 24, 1942

Date of Report

September 26, 1942

1. Name and address of applicant (correspondent):
Ralph C. Campbell, Box 347, Tucson, Arizona.
2. Character of project and estimated cost thereof:
Unwater and repair workings to and including the 200 foot level, \$5,000.00.
3. Location of property:
Amole Mining District, approximately 18 miles west of Tucson, Arizona.
4. Applicant's interest in or ownership of property:
Applicant is one of two in partnership having lease and option from owners.
5. Loan requested:
\$5,000.00.
6. Loan recommended:
\$5,000.00.
7. Comments:

(A) Reports and affidavits are indicative of commercial ore in the area to be made accessible.

(B) Applicant presents only two assays of present stope faces, but evidently the ore referred to in the Willis report has not been removed; in which case there would be approximately 3,500 tons made available between the 95 foot and 200 foot levels between number one and two shafts. This is based on a 5 foot mining width as claimed by applicant and confirmed to some extent by width of ore in #2 shaft reported by Willis. This ore will assay, according to evidence submitted, between 8 and 12% copper.

(C) In view of the immediate and appreciable production possibilities this loan is recommended.

ARIZONA DEPARTMENT OF MINERAL RESOURCES

Earl F. Hastings, Assistant Director
and Projects Engineer.

MILE WIDE

September 26, 1942

ANOLE

Earl F. Hastings

Reconstruction Finance Corporation
Preliminary Development Loan

Docket No.

C-10-54

Date Application Received

September 24, 1942

Date of Report

September 26, 1942

1. Name and address of applicant (correspondent):
Ralph C. Campbell, Box 347, Tucson, Arizona.
2. Character of project and estimated cost thereof:
Unwater and repair workings to and including the 200 foot level, \$5,000.00.
3. Location of property:
Anole Mining District, approximately 13 miles west of Tucson, Arizona.
4. Applicant's interest in or ownership of property:
Applicant is one of two in partnership having lease and option from owners.
5. Loan requested:
\$5,000.00.
6. Loan recommended:
\$5,000.00.
7. Comments:
 - (A) Reports and affidavits are indicative of commercial ore in the area to be made accessible.
 - (B) Applicant presents only two assays of present stopes faces, but evidently the ore referred to in the Willis report has not been removed; in which case there would be approximately 3,500 tons made available between the 95 foot and 200 foot levels between number one and two shafts. This is based on a 5 foot mining width as claimed by applicant and confirmed to some extent by width of ore in #2 shaft reported by Willis. This ore will assay, according to evidence submitted, between 8 and 12% copper.
 - (C) In view of the immediate and appreciable production possibilities this loan is recommended.

ARIZONA DEPARTMENT OF MINERAL RESOURCES

Earl F. Hastings, Assistant Director
and Projects Engineer.

MILE WIDE

September 26, 1942

AMOLE

Earl F. Hastings

Reconstruction Finance Corporation
Preliminary Development Loan

Docket No.
Date Application Received
Date of Report

C-ND-54
September 24, 1942
September 26, 1942

1. Name and address of applicant (correspondent):
Ralph C. Campbell, Box 347, Tucson, Arizona.
2. Character of project and estimated cost thereof:
Unwater and repair workings to and including the 200 foot level, \$5,000.00.
3. Location of property:
Amole Mining District, approximately 18 miles west of Tucson, Arizona.
4. Applicant's interest in or ownership of property:
Applicant is one of two in partnership having lease and option from owners.
5. Loan requested:
\$5,000.00.
6. Loan recommended:
\$5,000.00.
7. Comments:
 - (A) Reports and affidavits are indicative of commercial ore in the area to be made accessible.
 - (B) Applicant presents only two assays of present stope faces, but evidently the ore referred to in the Willis report has not been removed; in which case there would be approximately 3,500 tons made available between the 95 foot and 200 foot levels between number one and two shafts. This is based on a 5 foot mining width as claimed by applicant and confirmed to some extent by width of ore in #2 shaft reported by Willis. This ore will assay, according to evidence submitted, between 8 and 12% copper.
 - (C) In view of the immediate and appreciable production possibilities this loan is recommended.

ARIZONA DEPARTMENT OF MINERAL RESOURCES

Earl F. Hastings, Assistant Director
and Projects Engineer.

Campbell, Ralph C.
Box 547
Tucson, Arizona

9-26-42

See MILE WIDE - Re Pre. Dev. Loan

SAN CARLOS APTS.

See C file - Re exam. of property for J. M. Warfield 8-31-43

See C file - Re unloading ramp at Sahaurita 10-2-43

See SAHAURITA RAMP & SIDING - Re financing 9-30-43

608 South Hill St., Los Angeles

See C file - re iron deposit 10-4-44