



## **CONTACT INFORMATION**

Mining Records Curator  
Arizona Geological Survey  
1520 West Adams St.  
Phoenix, AZ 85007  
602-771-1601  
<http://www.azgs.az.gov>  
[inquiries@azgs.az.gov](mailto:inquiries@azgs.az.gov)

The following file is part of the

Arizona Department of Mines and Mineral Resources Mining Collection

## **ACCESS STATEMENT**

These digitized collections are accessible for purposes of education and research. We have indicated what we know about copyright and rights of privacy, publicity, or trademark. Due to the nature of archival collections, we are not always able to identify this information. We are eager to hear from any rights owners, so that we may obtain accurate information. Upon request, we will remove material from public view while we address a rights issue.

## **CONSTRAINTS STATEMENT**

The Arizona Geological Survey does not claim to control all rights for all materials in its collection. These rights include, but are not limited to: copyright, privacy rights, and cultural protection rights. The User hereby assumes all responsibility for obtaining any rights to use the material in excess of "fair use."

The Survey makes no intellectual property claims to the products created by individual authors in the manuscript collections, except when the author deeded those rights to the Survey or when those authors were employed by the State of Arizona and created intellectual products as a function of their official duties. The Survey does maintain property rights to the physical and digital representations of the works.

## **QUALITY STATEMENT**

The Arizona Geological Survey is not responsible for the accuracy of the records, information, or opinions that may be contained in the files. The Survey collects, catalogs, and archives data on mineral properties regardless of its views of the veracity or accuracy of those data.

09/10/85

ARIZONA DEPARTMENT OF MINES AND MINERAL RESOURCES FILE DATA

PRIMARY NAME: MIDWAY

ALTERNATE NAMES:

MIDWAY TUNGSTEN

MOHAVE COUNTY MILS NUMBER: 509A

LOCATION: TOWNSHIP 18 N RANGE 15 W SECTION 13 QTR. SE  
LATITUDE:N 34DEG 56MIN 20SEC LONGITUDE:W 113DEG 48MIN 54SEC  
TOPO MAP NAME: HIBERNIA PEAK - 7.5 MIN

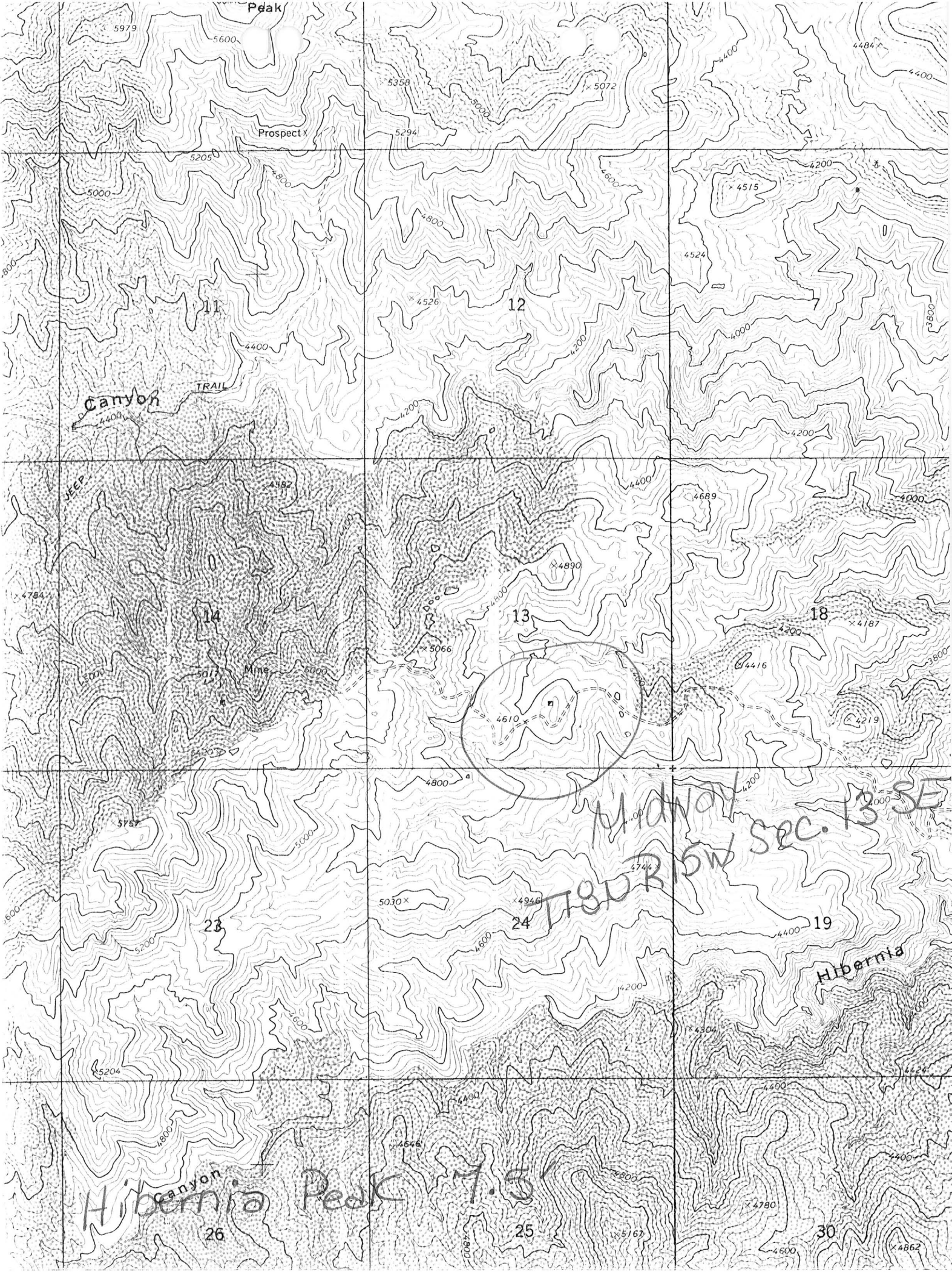
CURRENT STATUS: DEVEL DEPOSIT

COMMODITY:

TUNGSTEN-(M)W03 CONTENT-PRIM.

BIBLIOGRAPHY:

USGS HIBERNIA PEAK QUAD  
ADMMR MOHAVE CARD FILE  
ADMMR MOHAVE CUSTOM MILL PROJ. CARD FILE  
ADMMR MIDWAY TUNGSTEN FILE  
DALE, V.B., USBM IC 8078, P. 71  
ALSO IN SEC. 24



Peak

Prospect X

Canyon

TRAIL

JEOP

MINE

Hibernia

Hibernia Peak 7.5'



Midway sec. 13 SE

TSP R SW

11

12

14

13

18

24

19

26

25

30

5979

5600

5358

5072

4484

5205

5000

4800

4524

4515

4526

4200

4200

4784

4382

4689

4000

5066

4890

4187

4416

4219

5787

5000

4400

4000

5030

4946

4744

5204

4800

4646

4200

4304

4800

4400

4600

4400

4780

5167

4862

A

Midway Tungsten

A. Prospect.

NAME: MIDWAY - TUNGSTEN

COUNTY: MOHAVE

T 18 N R 15 W SEC. 13

E1 ~~4680~~ 4680

DISTRICT: CEDAR VALLEY

HIBERNIA PEAK 7 1/2'

Mineralization: WO<sub>3</sub> plus some Cu.

Geology: Precambrian gneissic grant with subit inclusions with wolframite mineralization in Qtz along a mineralized fault.

Type Operation: Shatt. open cuts & shot open cut workings.

Production: 35 unit WO<sub>3</sub>.

References: I.C. - 8088 U. Date p 71

NAME: MIDWAY

COUNTY: MOHAVE ✓

HIBERNIA PEAK 7 1/2'

T 18 N R 15 W SEC. 13 E1 4620

DISTRICT: CEDAR VALLEY

48 mi SW of Kingman

Mineralization: W. Wolframite in Qtz in mineralized fault

Geology:

Type Operation: Open Cut

Production: 61 units

References: I.C. 8078 p 71 2 uranium

Moh. Min & Pros file Index Map (#371)

Mohave Cty Card File

Handwritten text at the top left, possibly a name or title.

0

A

Faint horizontal line of text.

Faint horizontal line of text.

11

Faint horizontal line of text.

Faint horizontal line of text.

Faint horizontal line of text.

Faint horizontal line of text.

Faint horizontal line of text.

Faint horizontal line of text.

Faint horizontal line of text.

Faint horizontal line of text.

Faint horizontal line of text.

Faint horizontal line of text.

Faint horizontal line of text.

Faint horizontal line of text.

Faint horizontal line of text.

Faint horizontal line of text.

Faint horizontal line of text.

Faint horizontal line of text.

Faint horizontal line of text.

Faint horizontal line of text.

**DEPARTMENT OF MINERAL RESOURCES**  
**STATE OF ARIZONA**  
**FIELD ENGINEERS REPORT**

Mine      \* Midway Tungsten

Date      January 19, 1953.

District Cedar Valley, Sec. 13 & 24, Twp. 18N, R15W  
5 miles East of Borianna Mine.

Engineer      George F. Reed

Subject:      General Description & Present Status

Location:

This property is located at about 4500 feet elev. and about 5 miles due East of Borianna Mine. It is reached from the railroad crossing in East Kingman via Highway 93, 36.8 miles to turnoff at highway marker 105. Then westward over a fair to poor dirt road about 14 miles to the mine. It is just So. of Bull Canyon. Mine is in Cedar Valley Mining Dist., Mohave County, Secs. 13 & 24, Twp. 18N, R15W.

Ownership:

Two unpatented claims, Midway and Midway #2, are held by H.E. Wren and Lloyd Bliss, Gen'l. Delivery, Kingman. T.L. Bliss lives in last house on Arlington St. in Hill Top Section of Kingman.

Geology & General Conditions:

The mine is in a roof pendent of Pre-Cambrian Schist surrounded by Granite. The ore mineral is Wolframite in narrow quartz stringers in the schist. A small amount of Bismuth mineral was observed, but no other metallic minerals. The quartz stringers vary from a few inches to two feet wide, sometimes two of them separated by a five foot width of barren schist. The Wolframite is in spots and streaks from  $\frac{1}{2}$  inch to an inch in diameter and commonly these spots are enclosed in a width of one to two inches of the vein of quartz perhaps six inches wide.

Development:

Due to fairly rugged topography the operators have been able to start an adit portal about 200 feet vertically lower than their road and about 600 feet horizontally from the point on the road where they have a 120 foot portable compressor. At this low point they have a face about 20 feet high and are drilling the first tunnel round in this face. They have sorted and piled up several tons of clean quartz with Wolframite. In addition to the showings of Tungsten within a few feet of this portal, they have a little showing near the compressor. With these limited showings, the property is strictly a prospect.

Water & Power:

No power is available at the mine. Possibly a six mile extension from the Borianna Power Mine would be closest. Water is available in limited supply from a spring said to be  $\frac{1}{2}$  mile above the mine.

Remarks:

The owners are working on the road and trying to get enough financial help for a crude mill and further mine work.

*George F. Reed*

DEPARTMENT OF MINERAL RESOURCES  
State of Arizona  
MINE OWNER'S REPORT

Date June 27, 1947

- Mine: Midway
- Location: Sec. 18 Twp. Range Nearest Town Kingman  
Distance 48 Direction NE Road Condition Fair
- Mining District & County: Maynard Mohave
- Former Name of Mine: ✓
- Owner: Lloyd Bliss & H. E. Ulren  
Address: Kingman Sandy Route
- Operator: same  
Address:
- Principal Minerals: Ag Pb. Cu
- Number of Claims: 3 Lode ✓ Placer  
Patented Unpatented ✓
- Type of Surrounding Terrain:

10. Geology & Mineralization: 2889 Ag, 3070 Pb  
Diorite HW & F.W. stringer  
Main vein Diorite F.W.  
Quartz Porphyry H.W. Quartz (Blue)

not sampled

11. Dimension & Value of Ore Body:  
vein 6" - 2 1/2 feet  
Main vein 6' & 30' wide leached  
Strike NE & SW  
Dip E 60°

12. Ore "Blocked Out" or "In Sight": *None*

Ore Probable: *?*

13. Mine Workings—Amount and Condition:

No.	Feet	Condition
Shafts <i>1</i>	<del>60</del> <i>55</i>	<i>(good) vert.</i>
Raises		
Tunnels <i>Drift</i>	<i>5'</i>	<i>toward main vein</i>
Crosscuts		
Stopes		

14. Water Supply: *camp water 1/4 mile*

15. Brief History: *New*

16. Signature:

17. If Property for Sale, List Approximate Price and Terms: *Need financing*