



CONTACT INFORMATION

Mining Records Curator
Arizona Geological Survey
1520 West Adams St.
Phoenix, AZ 85007
602-771-1601
<http://www.azgs.az.gov>
inquiries@azgs.az.gov

The following file is part of the

Arizona Department of Mines and Mineral Resources Mining Collection

ACCESS STATEMENT

These digitized collections are accessible for purposes of education and research. We have indicated what we know about copyright and rights of privacy, publicity, or trademark. Due to the nature of archival collections, we are not always able to identify this information. We are eager to hear from any rights owners, so that we may obtain accurate information. Upon request, we will remove material from public view while we address a rights issue.

CONSTRAINTS STATEMENT

The Arizona Geological Survey does not claim to control all rights for all materials in its collection. These rights include, but are not limited to: copyright, privacy rights, and cultural protection rights. The User hereby assumes all responsibility for obtaining any rights to use the material in excess of "fair use."

The Survey makes no intellectual property claims to the products created by individual authors in the manuscript collections, except when the author deeded those rights to the Survey or when those authors were employed by the State of Arizona and created intellectual products as a function of their official duties. The Survey does maintain property rights to the physical and digital representations of the works.

QUALITY STATEMENT

The Arizona Geological Survey is not responsible for the accuracy of the records, information, or opinions that may be contained in the files. The Survey collects, catalogs, and archives data on mineral properties regardless of its views of the veracity or accuracy of those data.

08/30/85

ARIZONA DEPARTMENT OF MINES AND MINERAL RESOURCES FILE DATA

PRIMARY NAME: MIDDLE HACKBERRY

ALTERNATE NAMES:

MOHAVE COUNTY MILS NUMBER: 613A

LOCATION: TOWNSHIP 23 N RANGE 14 W SECTION 21 QTR. SW
LATITUDE: N 35DEG 21MIN 33SEC LONGITUDE: W 113DEG 46MIN 28SEC
TOPO MAP NAME: PEACOCK PEAK - 7.5 MIN

CURRENT STATUS: UNKNOWN

COMMODITY:

SILVER-(M) SULFIDE-PRIMARY
GOLD-BYPRODUCT
LEAD-BYPRODUCT

BIBLIOGRAPHY:

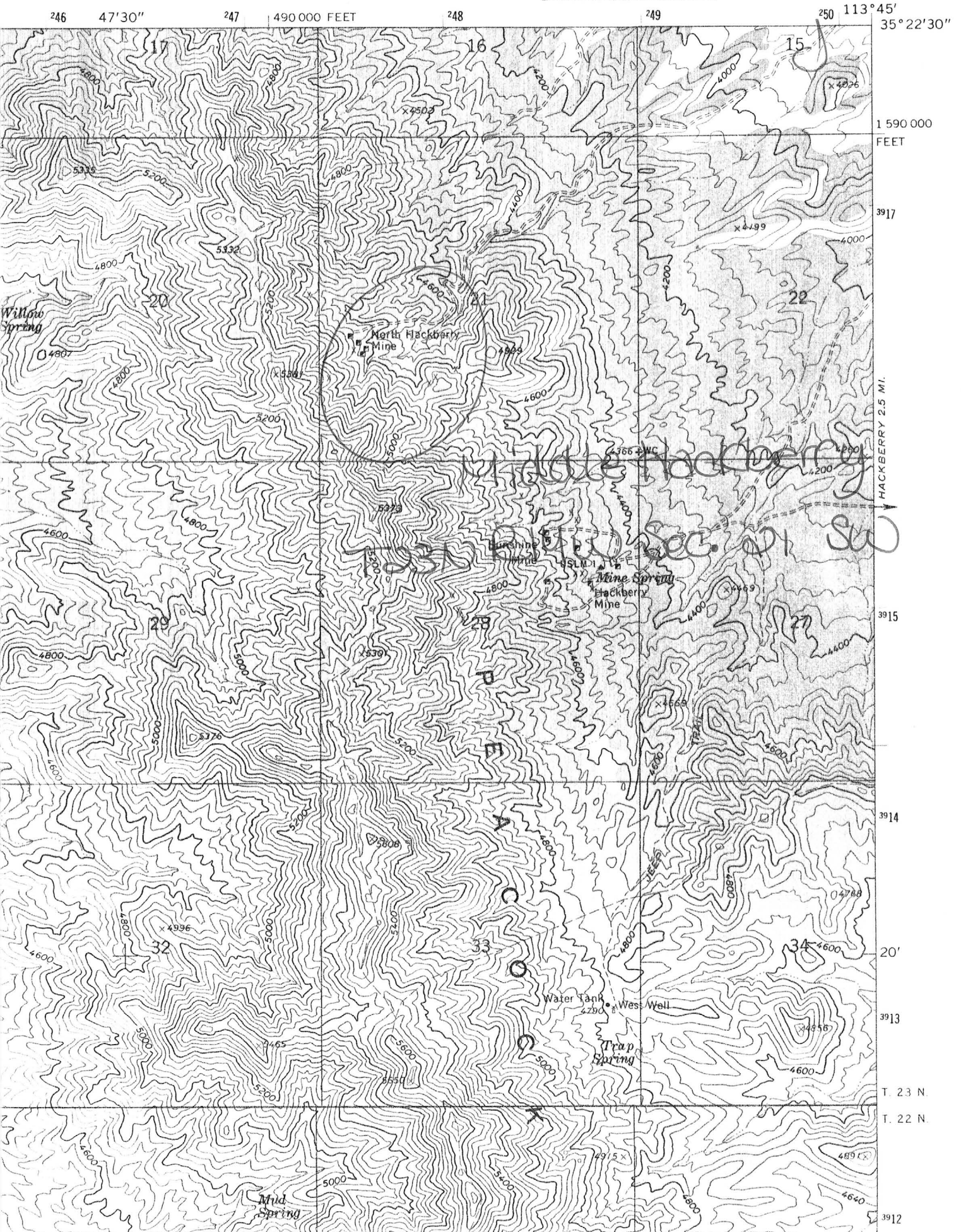
USGS PEACOCK PEAK QUAD
ADMR MIDDLE HACKBERRY MINE FILE
AZ. BLM AMC FILE 47632

MAPS - Upstairs in the AZBM rolled file boxes under Hackberry Consolidated. 2 maps show underground development, general location, claims, cross section of vein and longitudinal section of vein.

USGS Bull. 397, p. 141

PEACOCK PEAK QUADRANGLE
ARIZONA - MOHAVE CO.
7.5 MINUTE SERIES (TOPOGRAPHIC)

3254 1 NW
(VALENTINE)



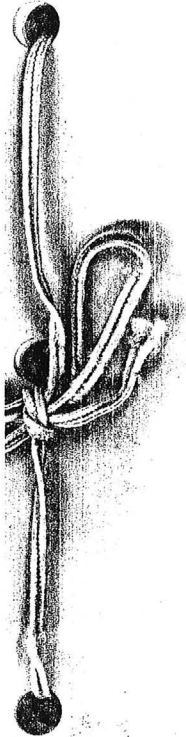
Middle Hackberry Mines Co.

Mohave

Mr. Nick Hughes, Las Vegas, came in to describe his Hackberry Ag mine 3 miles west of Hackberry village. He stated that in 1918 an engineer had estimated there was a reserve of 450,000 tons assaying 32 oz. Ag/ton. The mine has been closed since then and is now collar full of water, the main shaft is 950 feet deep. GW WR 8/28/75

950 ft

DO NOT REPRODUCE



REPORT BY
T. J. SPARKES

Middle Hackberry Mines Co.

DIRECTORS

W. H. RAPPLE,	- - -	President
T. J. SPARKES,	- - -	Vice President and Gen. Manager
W. B. RIDENOUR,	- - -	Director
SAMUEL D. MARTIN,	- - -	Director
J. H. TOWNSEND,	- - -	Secretary and Treasurer
T. D. WALSH,	- - -	Consulting Engineer
PAUL C. THORNE,	- - -	Counselor

Main Office, Kingman, Arizona.

MIDDLE HACKBERRY MINES COMPANY

The following data, briefly, gives the history of the Hackberry Consolidated Mine, situated in one of the old pioneer silver districts, 28 miles east from Kingman, Arizona, and is relative to the possibilities of the Middle Hackberry Mines Company's property which lies adjacent to it on the north end of the Hackberry Consolidated.

The Hackberry Consolidated, locally known as the Old Hackberry Silver mine, was one of Arizona's famous early day producers of silver. The production is variously estimated from 3,000,000 ozs. upwards. During the past 35 years, the property has been worked spasmodically by leasers,—chloriding for high grade ore—leaving a very large tonnage of what is termed low grade or milling ore in the mine.

The great advance during the past few years in metallurgy more especially the method by oil flotation has made it possible to treat these so-called low grade ores at great profit. As previously stated, the old mine contained a large tonnage of this character of ore, in addition to the unknown possibilities by sinking to greater depth and doing more lateral development.

The attention to these conditions of the mine was presented by William Neagle to James A. Murray and Gus S. Holmes. This trio of well known operators acquired the property about two years ago. Their judgment has been fully verified, and today they have a developed mine, modernly equipped in every respect, with a daily milling capacity of 200 tons. The gross value of "positive ore" now developed in the mine is estimated at over \$5,000,000.

The present greatest depth is 900 feet and laterly about 1000 feet. All workings are practically in pay ore. These workings show the ore bodies to be strong and persistent and give positive assurance of going to very great depth; also to a continuance of the ore shoots along and throughout the vein.

The Hackberry ore occurs mainly as Silver Sulphides (Argentite) in a silicious gangue which also carries a little gold and about three per cent of lead.

This character of ore is very susceptible to the present method of treatment.

The Middle Hackberry Mine Company's property consists of three full claims and a fraction, as will be noted by the accompanying map. Two of the claims cover 3000 feet in length along the vein, the other claim covering a strong spur vein, while the fraction covers a camp site and water right.

This mineral bearing "fissure vein" cutting through the porphyries and diorites has a strike of north 40 degrees west, dip of 40 degrees westerly, with rake of the ore shoots to the north.

The now proven mine to the south and the Hackberry Extension a partially developed mine to the north, plainly shows how the ore bodies were formed and where to develop. These same localities are unquestionably the large leached areas which outcrop along the vein, being the same areas explored by the "old timers" in search of high grade ores.

These areas show intense leaching and give positive evidence of a redeposition of minerals. Several of these areas occur along through the vein, on this property, three of which are very extensive, giving possibilities of developing large ore bodies.

The accompanying map and photographs show and illustrate the conditions.

The present workings on the property are shallow, yet were found to be very useful in getting at determinations.

A new development shaft has been started. The place for sinking the same has been well located.

A good camp is now being established; also a well equipped blacksmith shop and supply of mining tools. etc.

Located as the property is within two miles of a R. R. with an easy grade for truck hauling, gives the property economic advantages for operating.

The property has unquestioned exceptionally good merit, based upon what has already been proven under previous similar conditions. Situated as it is, it is not unfair to state and assume that the situation of the property is "comparative" as to what did occur when the United Eastern at Oatman and the Verdi Extension at Jerome were developed.

Dated this 22nd day of
March 1919, Kingman, Arizona.



Mr Nicholas M. Hughes Sr
~~5229 E. San Antonio Ranch Rd~~
Scottsdale (918-6722)

P.O. Box 69

85252

SCOTTSDALE, ARIZ

says he owns Middle Fork
Mines Co. - Motane Co.
Silver ore - patented claims

3-3-66

(2)

1975 - 6094 Carlsbad Avenue,
Las Vegas, Nevada 89110
(702) 452-2598

~~See map in Sec. 1 of brown map cabinet~~

Middle Hackberry Mines Co.

Mohave

Mr. Nick Hughes, Las Vegas, came in to describe his Hackberry Ag mine 3 miles west of Hackberry village. He stated that in 1918 an engineer had estimated there was a reserve of 450,000 tons assaying 32 oz. Ag/ton. The mine has been closed since then and is now collar full of water, the main shaft is 950 feet deep. GW WR 8/28/75

950 ft

DO NOT REPRODUCE

~~See map in Sec. 1 of brown map cabinet~~

1975 - 6094 Carlsbad Avenue,
Las Vegas, Nevada 89110
(702) 452-2598

②

3-3-66

Aluminum - Potentiometer

Map for same - Marking
Marking Co. - Marking Co.

SCOTTSDALE, ARIZ

85252

P.O. Box 69

Scottsdale (9186777)

~~529 E. Scottsdale Ranch Rd~~
Mr. Richard M. Young for the



REPORT BY
T. J. SPARKES

Middle Hackberry Mines Co.

DIRECTORS

W. H. RAPLEE,	- - -	President
T. J. SPARKES,	- - -	Vice President and Gen. Manager
W. B. RIDENOUR,	- - -	Director
SAMUEL D. MARTIN,	- - -	Director
J. H. TOWNSEND,	- - -	Secretary and Treasurer
T. D. WALSH,	- - -	Consulting Engineer
PAUL C. THORNE,	- - -	Counselor

Main Office, Kingman, Arizona.

MIDDLE HACKBERRY MINES COMPANY

The following data, briefly, gives the history of the Hackberry Consolidated Mine, situated in one of the old pioneer silver districts, 28 miles east from Kingman, Arizona, and is relative to the possibilities of the Middle Hackberry Mines Company's property which lies adjacent to it on the north end of the Hackberry Consolidated.

The Hackberry Consolidated, locally known as the Old Hackberry Silver mine, was one of Arizona's famous early day producers of silver. The production is variously estimated from 3,000,000 ozs. upwards. During the past 35 years, the property has been worked spasmodically by leasers,—chloriding for high grade ore—leaving a very large tonnage of what is termed low grade or milling ore in the mine.

The great advance during the past few years in metallurgy more especially the method by oil flotation has made it possible to treat these so-called low grade ores at great profit. As previously stated, the old mine contained a large tonnage of this character of ore, in addition to the unknown possibilities by sinking to greater depth and doing more lateral development.

The attention to these conditions of the mine was presented by William Neagle to James A. Murray and Gus S. Holmes. This trio of well known operators acquired the property about two years ago. Their judgment has been fully verified, and today they have a developed mine, modernly equipped in every respect, with a daily milling capacity of 200 tons. The gross value of "positive ore" now developed in the mine is estimated at over \$5,000,000.

The present greatest depth is 900 feet and laterly about 1000 feet. All workings are practically in pay ore. These workings show the ore bodies to be strong and persistent and give positive assurance of going to very great depth; also to a continuance of the ore shoots along and throughout the vein.

The Hackberry ore occurs mainly as Silver Sulphides (Argentite) in a silicious gangue which also carries a little gold and about three per cent of lead.

This character of ore is very susceptible to the present method of treatment.

The Middle Hackberry Mine Company's property consists of three full claims and a fraction, as will be noted by the accompanying map. Two of the claims cover 3000 feet in length along the vein, the other claim covering a strong spur vein, while the fraction covers a camp site and water right.

This mineral bearing "fissure vein" cutting through the porphyries and diorites has a strike of north 40 degrees west, dip of 40 degrees westerly, with rake of the ore shoots to the north.

The now proven mine to the south and the Hackberry Extension a partially developed mine to the north, plainly shows how the ore bodies were formed and where to develop. These same localities are unquestionably the large leached areas which outcrop along the vein, being the same areas explored by the "old timers" in search of high grade ores.

These areas show intense leaching and give positive evidence of a redeposition of minerals. Several of these areas occur along through the vein, on this property, three of which are very extensive, giving possibilities of developing large ore bodies.

The accompanying map and photographs show and illustrate the conditions.

The present workings on the property are shallow, yet were found to be very useful in getting at determinations. p1 says

A new development shaft has been started. The place for sinking the same has been well located.

A good camp is now being established; also a well equipped blacksmith shop and supply of mining tools. etc.

Located as the property is within two miles of a R. R. with an easy grade for truck hauling, gives the property economic advantages for operating.

The property has unquestioned exceptionally good merit, based upon what has already been proven under previous similar conditions. Situated as it is, it is not unfair to state and assume that the situation of the property is "comparative" as to what did occur when the United Eastern at Oatman and the Verdi Extension at Jerome were developed.

Dated this 22nd day of
March 1919, Kingman, Arizona.

