



## **CONTACT INFORMATION**

Mining Records Curator  
Arizona Geological Survey  
1520 West Adams St.  
Phoenix, AZ 85007  
602-771-1601  
<http://www.azgs.az.gov>  
[inquiries@azgs.az.gov](mailto:inquiries@azgs.az.gov)

The following file is part of the

Arizona Department of Mines and Mineral Resources Mining Collection

## **ACCESS STATEMENT**

These digitized collections are accessible for purposes of education and research. We have indicated what we know about copyright and rights of privacy, publicity, or trademark. Due to the nature of archival collections, we are not always able to identify this information. We are eager to hear from any rights owners, so that we may obtain accurate information. Upon request, we will remove material from public view while we address a rights issue.

## **CONSTRAINTS STATEMENT**

The Arizona Geological Survey does not claim to control all rights for all materials in its collection. These rights include, but are not limited to: copyright, privacy rights, and cultural protection rights. The User hereby assumes all responsibility for obtaining any rights to use the material in excess of "fair use."

The Survey makes no intellectual property claims to the products created by individual authors in the manuscript collections, except when the author deeded those rights to the Survey or when those authors were employed by the State of Arizona and created intellectual products as a function of their official duties. The Survey does maintain property rights to the physical and digital representations of the works.

## **QUALITY STATEMENT**

The Arizona Geological Survey is not responsible for the accuracy of the records, information, or opinions that may be contained in the files. The Survey collects, catalogs, and archives data on mineral properties regardless of its views of the veracity or accuracy of those data.

PRINTED: 03/06/2003

ARIZONA DEPARTMENT OF MINES AND MINERAL RESOURCES AZMILS DATA

PRIMARY NAME: MICHIGAN

ALTERNATE NAMES:  
HANCOCK

PINAL COUNTY MILS NUMBER: 106

LOCATION: TOWNSHIP 2 S RANGE 12 E SECTION 2 QUARTER SW  
LATITUDE: N 33DEG 16MIN 52SEC LONGITUDE: W 111DEG 05MIN 27SEC  
TOPO MAP NAME: SUPERIOR - 7.5 MIN

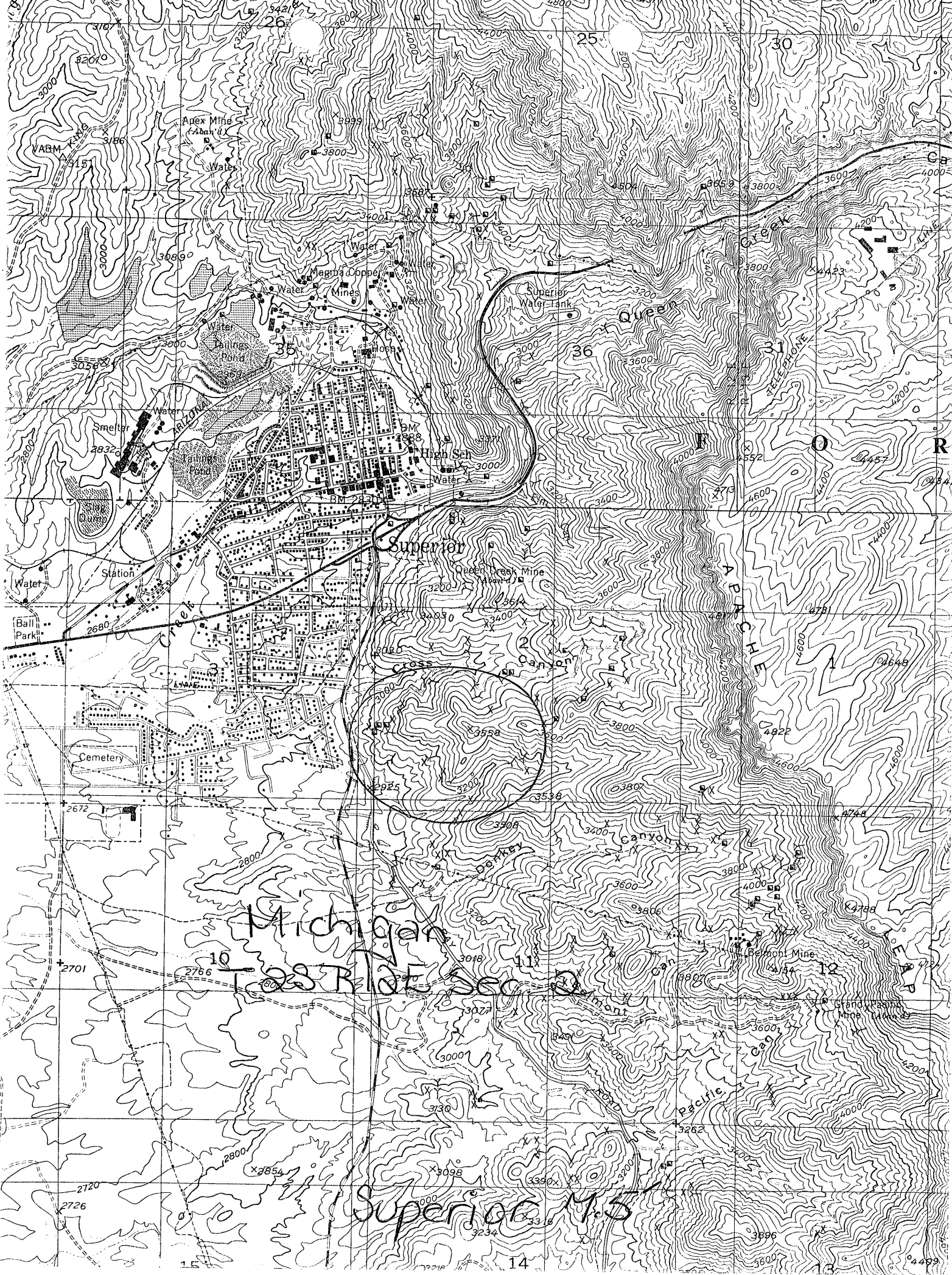
CURRENT STATUS: PAST PRODUCER

COMMODITY:

COPPER OXIDE  
COPPER SULFIDE  
SILVER  
GOLD

BIBLIOGRAPHY:

ADMMR MICHIGAN FILE  
BLM AMC FILE 604538  
USGS MAP MF-253



Michigan

T-23 R-10E Sec 2

Superior, Mich

COMMODITY INFORMATION

COMMODITIES PRESENT C10 < CU, MAG, MA >  
 ORE MINERALS C30 < COPPER CARBONATES, COPPER SULFIDES >  
 COMMODITY SUBTYPES C41 < >  
 GEN. ANALYTICAL DATA C43 < >  
 COM. INFO. COMMENTS C50 < >

SIGNIFICANCE

MAJOR PRODUCTS MAJOR < <u>CU</u> >	PRODUCER	NON-PRODUCER
MINOR PRODUCTS MINOR < <u>AG, MAU</u> >		MAIN COMMODITIES PRESENT C11 < >
POTENTIAL PRODUCTS POTEN < >		MINOR COMMODITIES PRESENT C12 < >
OCCURRENCES OCCUR < >		OCCURRENCES OCCUR < >

\*PRODUCTION

PRODUCTION <input checked="" type="radio"/> (circle)	PRODUCTION SIZE <input checked="" type="radio"/> <u>SM</u> <input type="radio"/> MED <input type="radio"/> LGE (circle one)	NON-PRODUCER
		PRODUCTION <input type="radio"/> <u>UND</u> <input type="radio"/> NO (circle one)

EXPLORATION OR DEVELOPMENT

STATUS	PRODUCER	NON-PRODUCER
	STATUS AND ACTIVITY A20 < >	STATUS AND ACTIVITY A20 < >

DISCOVERER L20 < >  
 YEAR OF DISCOVERY L10 < > \* NATURE OF DISCOVERY L30 < > \* YEAR OF FIRST PRODUCTION L40 < 1935 > \* YEAR OF LAST PRODUCTION L45 < 1937 >  
 PRESENT/LAST OWNER A12 < >  
 PRESENT/LAST OPERATOR A13 < >  
 EXPL./DEV.COMMENTS L110 < OPERATORS INCLUDED GEORGE STINSON, LUTICH >

DESCRIPTION OF DEPOSIT

DEPOSIT TYPE(S) C40 < SHEAR ZONE >  
 DEPOSIT FORM/SHAPE M10 < >  
 DEPTH TO TOP M20 < > \* UNITS M21 < > \* MAXIMUM LENGTH M40 < > \* UNITS M41 < >  
 DEPTH TO BOTTOM M30 < > \* UNITS M31 < > \* MAXIMUM WIDTH M50 < > \* UNITS M51 < >  
 DEPOSIT SIZE M15  SMALL  M15 MEDIUM  M15 LARGE (circle one) \* MAXIMUM THICKNESS M60 < > \* UNITS M61 < >  
 STRIKE M70 < > \* DIP M80 < >  
 DIRECTION OF PLUNGE M100 < > \* PLUNGE M90 < >  
 REP. DESC. COMMENTS M110 < >

DESCRIPTION OF WORKINGS

Workings are: SURFACE M120 UNDERGROUND  M130 BOTH M140 (circle one)  
 DEPTH BELOW SURFACE M160 < > \* UNITS M161 < > \* OVERALL LENGTH M190 < > \* UNITS M191 < >  
 LENGTH OF WORKINGS M170 < > \* UNITS M171 < > \* OVERALL WIDTH M200 < > \* UNITS M201 < >  
 DESC. OF WORK. COM. M220 < > \* OVERALL AREA M210 < > \* UNITS M211 < >

GEOLOGY

\* AGE OF HOST ROCK(S) K1 < P.R.E.C. >  
 \* HOST ROCK TYPE(S) K1A < LIMESTONE OR QUARTZITE >  
 \* AGE OF IGNEOUS ROCK(S) K2 < >  
 \* IGNEOUS ROCK TYPE(S) K2A < >  
 \* AGE OF MINERALIZATION K3 < CRET.-PALEO. >  
 \* PERT. MINERALS (NOT ORE) K4 < >  
 \* ORE CONTROL/LOCUS K5 < >  
 \* MAJ. REG. TRENDS/STRUCT. N5 < N-S FAULTING, ~~THE~~ CONCENTRATOR FAULT W. OF MINE, ANOTHER N-S FAULT E. OF MINE >  
 \* TECTONIC SETTING N15 < >  
 \* SIGNIFICANT LOCAL STRUCT. N70 < WSW FAULTING - SERIES OF PARALLEL FAULTS THROUGH AREA >  
 \* SIGNIFICANT ALTERATION N75 < >  
 \* PROCESS OF CONC./ENRICH. N80 < >  
 \* FORMATION AGE N30 < >  
 \* FORMATION NAME N30A < >  
 SECOND FM AGE N35 < >  
 SECOND FM NAME N35A < >  
 \* IGNEOUS UNIT AGE N50 < >  
 \* IGNEOUS UNIT NAME N50A < >  
 SECOND IG. UNIT AGE N55 < >  
 SECOND IG. UNIT NAME N55A < >  
 GEOLOGY COMMENTS N85 < MINERALIZATION EITHER IN TROY QUARTZITE, MESSAL LIMESTONE, OR BOTH, ASSOCIATED WITH CRET-PALEO FAULTING AND INTRUSIVE EPISODES. >

GENERAL COMMENTS

GENERAL COMMENTS GEN < >

\*GENERAL REFERENCES

*Michigan*

REFERENCE 1 F1 < ABGMT-USG FILE DATA

REFERENCE 2 F2 < USGS MINERAL INVESTIGATIONS FIELD STUDIES MAP, MF-253, 1962

REFERENCE 3 F3 < USGM FILE DATA

REFERENCE 4 F4 < \_\_\_\_\_

*mile 106*

U.S. CRIB-SITE FORM

RECORD IDENTIFICATION

RECORD NUMBER B10 < \_\_\_\_\_ > RECORD TYPE B20 < X, I, M > DEPOSIT NUMBER B40 < \_\_\_\_\_ >

REPORT DATE G1 < 82 03 > \*INFORMATION SOURCE B30 < 1, 2 > \*FILE LINK IDENT. B50 < USRM-0040210682 >

REPORTER(SUPERVISOR) G2 < ROTH, FRANCES A. > < GEST, DON E. >

REPORTER AFFILIATION G5 < ABGMT > \*SITE NAME A10 < MICHIGAN AND HANCOCK MINE >

SYNONYMS A11 < \_\_\_\_\_ >

LOCATION

MINING DISTRICT/AREA A30 < PIONEER DISTRICT >

COUNTY A60 < PINAL > STATE A60 < AZ > COUNTRY A40 < U.S. >

PHYSIOGRAPHIC PROV A63 < 1, 2, 4 >

DRAINAGE AREA A62 < 1, 5, 0, 5, 0, 1, 0, 0, 4 >

QUADRANGLE NAME A90 < SUPERIOR > LAND STATUS A64 < 4, 1, 4, 4, 1, 2, 9, 1 >

SECOND QUAD NAME A92 < \_\_\_\_\_ > QUADRANGLE SCALE A100 < 2, 4, 0, 0, 0 >

ELEVATION A107 < 3, 5, 0, 0, 4, F, T > SECOND QUAD SCALE A91 < \_\_\_\_\_ >

JTM

NORTHING A120 < 3, 6, 8, 2, 4, 0, 0 >

EASTING A130 < 3, 9, 1, 6, 0, 0 >

ZONE NUMBER A110 < 1, 2 >

\*ACCURACY

ACCURATE ACC (circle)

ESTIMATED (5) < LOCATION TAKEN TO CENTER >

OF QUARTER SECTION FROM USGM-MILS

GEODETTIC

LATITUDE A70 < \_\_\_\_\_ N >

LONGITUDE A80 < \_\_\_\_\_ W >

CADASTRAL

TOWNSHIP(S) A77 < 0, 0, 2, S > RANGE(S) A78 < 0, 1, 2, E >

SECTION(S) A79 < 2 >

SECTION FRACTION(S) A76 < SW >

MERIDIAN(S) A81 < GILA AND SALT RIVER >

POSITION FROM NEAREST PROMINENT LOCALITY A82 < ABOUT 1 MILE WEST OF APACHE LEAP >

LOCATION COMMENTS A83 < \_\_\_\_\_ >

ESSENTIAL INFORMATION

ESSENTIAL SOMETIMES OR HIGHLY RECOMMENDED