



CONTACT INFORMATION

Mining Records Curator
Arizona Geological Survey
1520 West Adams St.
Phoenix, AZ 85007
602-771-1601
<http://www.azgs.az.gov>
inquiries@azgs.az.gov

The following file is part of the

Arizona Department of Mines and Mineral Resources Mining Collection

ACCESS STATEMENT

These digitized collections are accessible for purposes of education and research. We have indicated what we know about copyright and rights of privacy, publicity, or trademark. Due to the nature of archival collections, we are not always able to identify this information. We are eager to hear from any rights owners, so that we may obtain accurate information. Upon request, we will remove material from public view while we address a rights issue.

CONSTRAINTS STATEMENT

The Arizona Geological Survey does not claim to control all rights for all materials in its collection. These rights include, but are not limited to: copyright, privacy rights, and cultural protection rights. The User hereby assumes all responsibility for obtaining any rights to use the material in excess of "fair use."

The Survey makes no intellectual property claims to the products created by individual authors in the manuscript collections, except when the author deeded those rights to the Survey or when those authors were employed by the State of Arizona and created intellectual products as a function of their official duties. The Survey does maintain property rights to the physical and digital representations of the works.

QUALITY STATEMENT

The Arizona Geological Survey is not responsible for the accuracy of the records, information, or opinions that may be contained in the files. The Survey collects, catalogs, and archives data on mineral properties regardless of its views of the veracity or accuracy of those data.

PRINTED: 11-27-2006

ARIZONA DEPARTMENT OF MINES AND MINERAL RESOURCES AZMILS DATA

PRIMARY NAME: MG GROUP

ALTERNATE NAMES:

YAVAPAI COUNTY MILS NUMBER: 1368

LOCATION: TOWNSHIP 8 N RANGE 3 E SECTION 16 QUARTER C
LATITUDE: N 34DEG 02MIN 17SEC LONGITUDE: W 112DEG 03MIN 24SEC
TOPO MAP NAME: SQUAW CREEK MESA - 7.5 MIN

CURRENT STATUS: UNKNOWN

COMMODITY:
GOLD LODE

BIBLIOGRAPHY:
ADMMR MG GROUP FILE

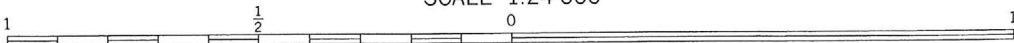
MG GROUP
T8 N. R 3 E.
sect. 16

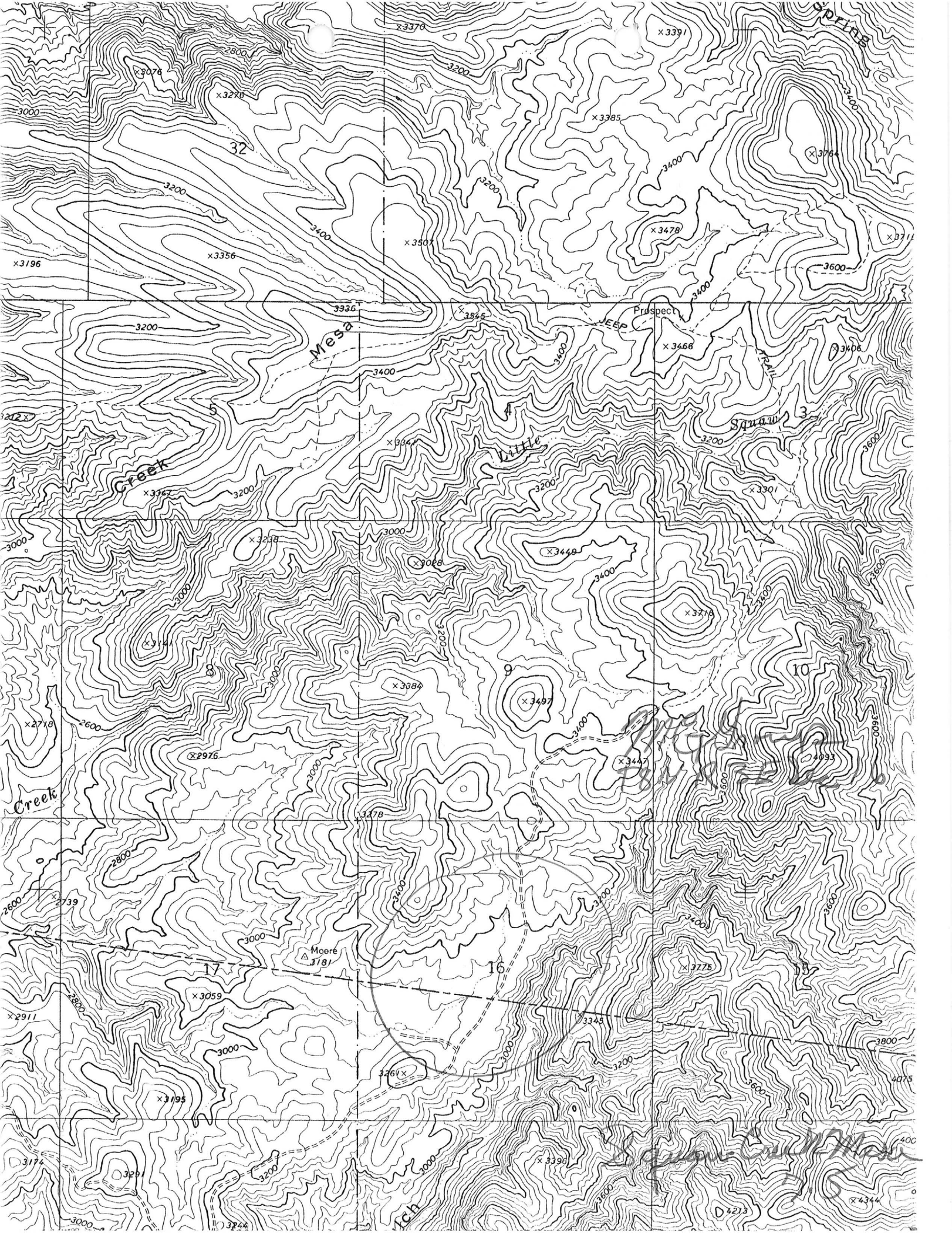
A topographic map section showing a road labeled "Fork West" running vertically. To the left of the road, a contour line is labeled "3400". The map includes various contour lines and a small, irregularly shaped area that appears to be a pond or a cleared field.

SCALE 1:24 000

SCALE 1:24 000

1 MILE





MEMORANDUM

To: Company File
From: Mike Greeley, Field Engineer
Re: Canyon Resources
Date: September 11, 1986

who?
Canyon Resources has the MG group (#1-30) of lode claims that overlaps the boundary between Yavapai and Maricopa counties. The group appears to be centered about Sec.16,T8N,R3E (Yavapai Co.). The property was located in 1981. It is in the Squaw Peak mining district.

There is no MILS listing.