



CONTACT INFORMATION

Mining Records Curator
Arizona Geological Survey
1520 West Adams St.
Phoenix, AZ 85007
602-771-1601
<http://www.azgs.az.gov>
inquiries@azgs.az.gov

The following file is part of the

Arizona Department of Mines and Mineral Resources Mining Collection

ACCESS STATEMENT

These digitized collections are accessible for purposes of education and research. We have indicated what we know about copyright and rights of privacy, publicity, or trademark. Due to the nature of archival collections, we are not always able to identify this information. We are eager to hear from any rights owners, so that we may obtain accurate information. Upon request, we will remove material from public view while we address a rights issue.

CONSTRAINTS STATEMENT

The Arizona Geological Survey does not claim to control all rights for all materials in its collection. These rights include, but are not limited to: copyright, privacy rights, and cultural protection rights. The User hereby assumes all responsibility for obtaining any rights to use the material in excess of "fair use."

The Survey makes no intellectual property claims to the products created by individual authors in the manuscript collections, except when the author deeded those rights to the Survey or when those authors were employed by the State of Arizona and created intellectual products as a function of their official duties. The Survey does maintain property rights to the physical and digital representations of the works.

QUALITY STATEMENT

The Arizona Geological Survey is not responsible for the accuracy of the records, information, or opinions that may be contained in the files. The Survey collects, catalogs, and archives data on mineral properties regardless of its views of the veracity or accuracy of those data.

TOWNSHIP N° 9 NORTH

T 10 N. R 5 W

PATENTED MINING CLAIMS

No. SUR.	NAME
1 1422	GOLDEN AGE
2 1424	VERNO
3 1424	THUNDERBOLT
4 1423	NEW ERA
5 1310	UNCLE SAM
6 1310	GOLDEN ROD
7 1248	ANTELOPE
8 1248	GREY DEVELL
9 1248	DUN BILLY
10 3853	COYOTE PLACER
11 3853	NEW WEAVER PLACER
12 3853	DASY
13 2200	CLINTON
14 2198	MAMIE
15 2000	BLACK WARRIOR
16 2000	LITTLE CHIEF
17 2719	SAN FRANCISCO

W.C. 0.30 N.

Note: To avoid crowding of data upon the face of the plat, the patented mining claims are given identifying numbers from 1 to 17, inclusive, the same being enclosed in parentheses in order that there may be no confusion with the public land lot designations. See table for corresponding names and survey numbers.

NORTH

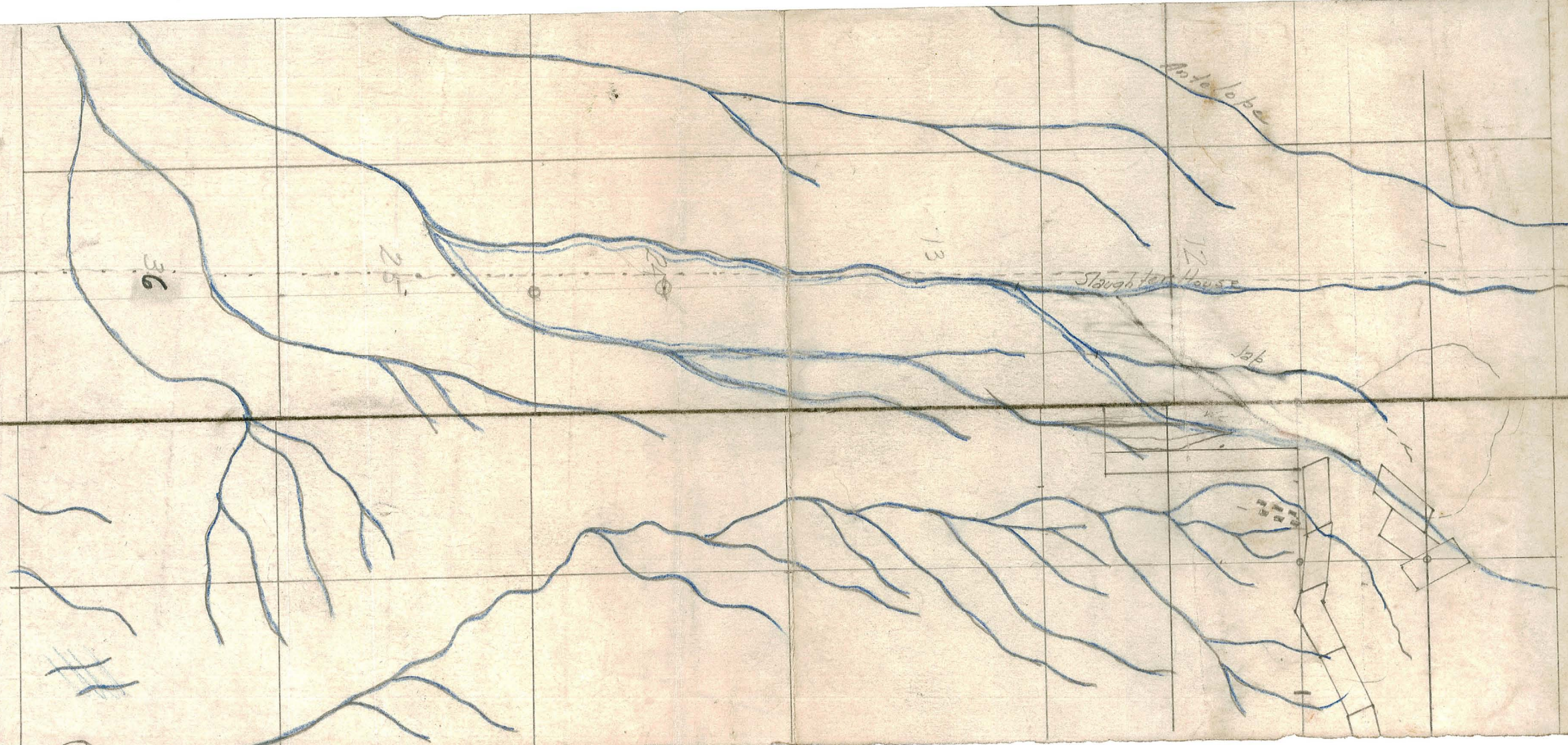
Mean Magnetic
Variation 14° 55' E.

Scale: 40 Chains +

N 89° 53' E 211
W.C.C. 1.50 S. 5.1
T 8 N. R 5 W
NORTH 2.44

LINES DESIGNATED	BY WHOM SURVEYED	GROUP	
		No.	DATE
Exterior	Benj. J. Kinsey	155	Oct. 3, 1928
Subdivisional			
Miscellaneous			

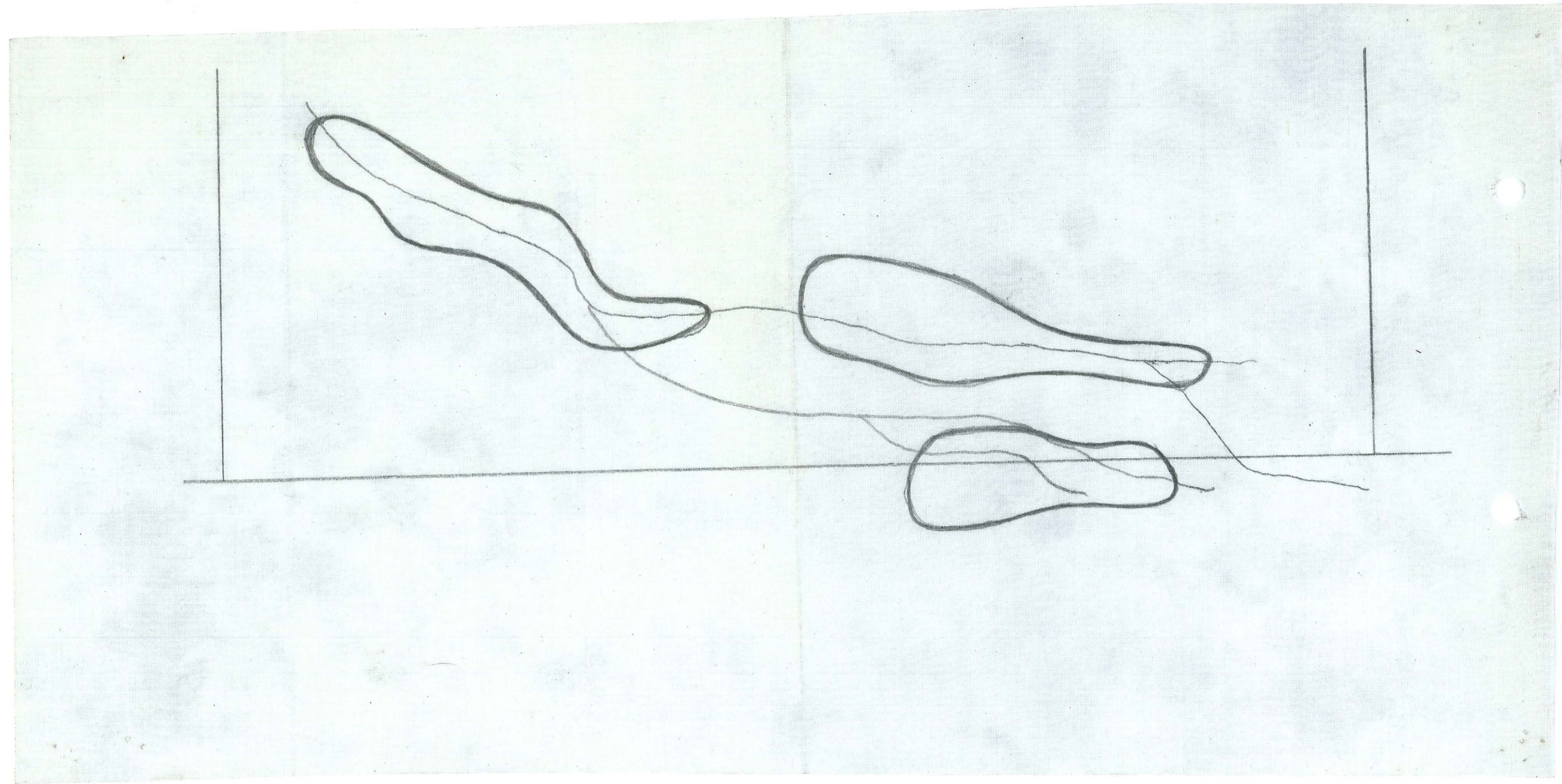
D.M.B.P.

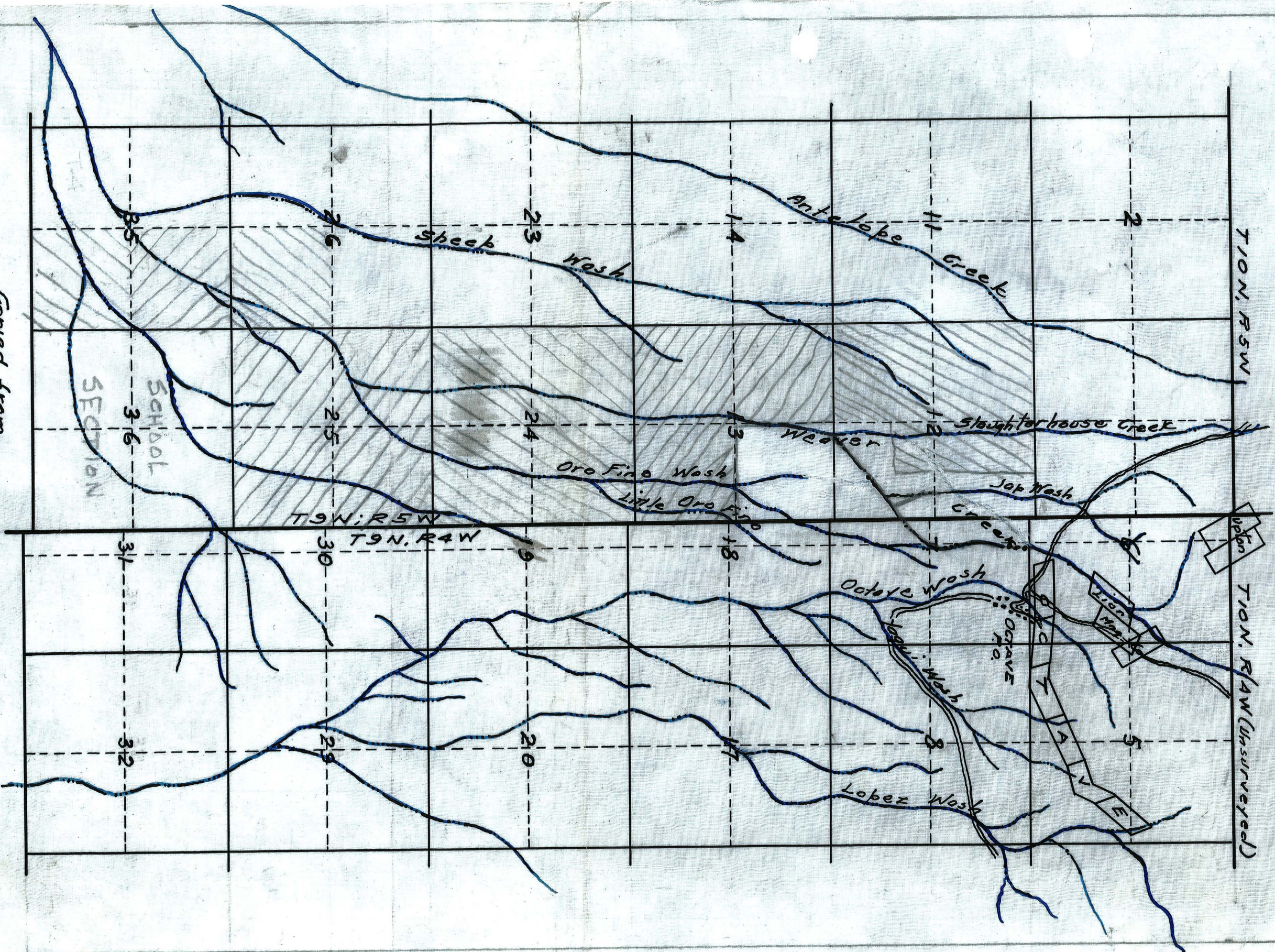


Puerto Rico
 Aug 1934

2700 / year

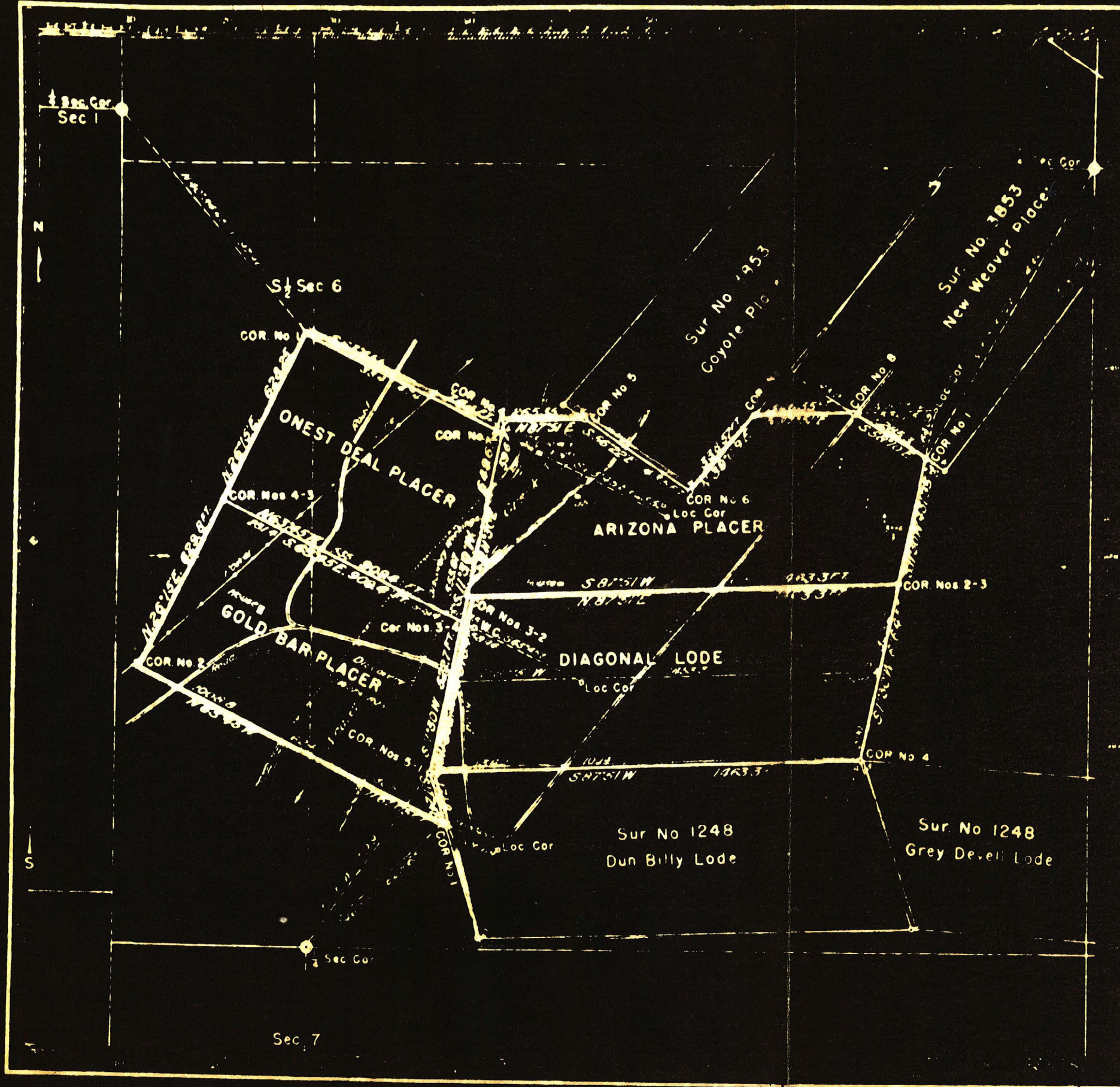
Ratio
 10,000 40 / year
 6,000 3 yds deep
 14,274
 600,000 yds @





Copied from
TOWNSHIP MAPS
of the
DEPARTMENT OF THE INTERIOR
GENERAL LAND OFFICE
February 1, 1938 By Carl E. Barth, Jr. E.M.
Prescott, Ariz.

N.G.



MINERAL SURVEY No. 4304

CLAIM OF
W. D. MERRILL

KNOWN AS THE
ONEST DEAL, GOLD BAR
AND ARIZONA PLACERS,
AND DIAGONAL LODGE

SITUATE IN
Sec 6, T 9 N, R 4 W, G & S. R. M.
YAVAPAI COUNTY, ARIZONA
Weaver Mining District
Arizona Land District

0 100 200 300 400 500 600 700 800 900 1000
Scale 1 inch = 300 feet
Magnetic Declination 15° 00' East

Surveyed Aug 15 to Sept 30, 1946
by Richard L. Merrill, Mineral Surveyor

UNITED STATES DEPARTMENT OF THE INTERIOR
BUREAU OF LAND MANAGEMENT
Public Survey Office
Phoenix, Arizona, January 21, 1947.

I hereby certify that this plat of Mineral Survey
No. 4304, Arizona, is strictly conformable to the
field notes of said survey which have been examined
and approved.

Frank M. Chapin
Official Cadastral Engineer

Merrill
patented
claims.