



## **CONTACT INFORMATION**

Mining Records Curator  
Arizona Geological Survey  
1520 West Adams St.  
Phoenix, AZ 85007  
602-771-1601  
<http://www.azgs.az.gov>  
[inquiries@azgs.az.gov](mailto:inquiries@azgs.az.gov)

The following file is part of the

Arizona Department of Mines and Mineral Resources Mining Collection

## **ACCESS STATEMENT**

These digitized collections are accessible for purposes of education and research. We have indicated what we know about copyright and rights of privacy, publicity, or trademark. Due to the nature of archival collections, we are not always able to identify this information. We are eager to hear from any rights owners, so that we may obtain accurate information. Upon request, we will remove material from public view while we address a rights issue.

## **CONSTRAINTS STATEMENT**

The Arizona Geological Survey does not claim to control all rights for all materials in its collection. These rights include, but are not limited to: copyright, privacy rights, and cultural protection rights. The User hereby assumes all responsibility for obtaining any rights to use the material in excess of "fair use."

The Survey makes no intellectual property claims to the products created by individual authors in the manuscript collections, except when the author deeded those rights to the Survey or when those authors were employed by the State of Arizona and created intellectual products as a function of their official duties. The Survey does maintain property rights to the physical and digital representations of the works.

## **QUALITY STATEMENT**

The Arizona Geological Survey is not responsible for the accuracy of the records, information, or opinions that may be contained in the files. The Survey collects, catalogs, and archives data on mineral properties regardless of its views of the veracity or accuracy of those data.

PRINTED: 02/01/2002

ARIZONA DEPARTMENT OF MINES AND MINERAL RESOURCES AZMILS DATA

PRIMARY NAME: MERRILL, R. M., RICH HILL PLAC

ALTERNATE NAMES:  
ARIZONA GRAVEL PROPERTY

YAVAPAI COUNTY MILS NUMBER: 263D

LOCATION: TOWNSHIP 9 N RANGE 4 W SECTION 6 QUARTER W2  
LATITUDE: N 34DEG 08MIN 38SEC LONGITUDE: W 112DEG 42MIN 33SEC  
TOPO MAP NAME: YARNELL - 7.5 MIN

CURRENT STATUS: PAST PRODUCER

COMMODITY:  
GOLD PLACER

BIBLIOGRAPHY:  
ADMMR MERRILL, R. M., RICH HILL GOLD PLACERS  
MINE FILE  
SEE: ADMMR WEAVER GULCH GOLD PROPERTY FILE  
SEE: ADMMR RICH HILL PLACER FILE  
SEE: ADMMR MERRILL PLACER COLVO FILE  
BLM MINING DISTRICT SHEET 286

DEPARTMENT OF MINERAL RESOURCES

News Items

Date 10/20/39

Mine Merrill Placers

Location 5 miles south of

Owner Octave

Address Harry Cooper  
in charge

Operating Co. General Dredging

Address Corp.  
Sacramento, Calif.

Pres.

Genl. Mgr. Systematic drilling

Mine Supt. area by burn

Mill Supt. drill. Expect to

Principal Metals drill for several

Men Employed months

Production Rate

Mill, Type & Capacity Bob Kuhne of  
Prescott has the

Power, Amt. & Type drilling contract

Signed

Barth

(Over)

DEPARTMENT OF MINERAL RESOURCES

News Items

Date Dec 29, 1939

Mine Merrill Placer

Location S of Octave

Owner

Address

Operating Co. Genl. Dredging Co

Address Sacramento

Pres.

Genl. Mgr. Harrison Cooper

Mine Supt.

Mill Supt. Closed down

Principal Metals Their

Men Employed operation

Production Rate

Mill, Type & Capacity

Power, Amt. & Type

Signed

Barth

(Over)

See: Stearns Gulch Gold Property (file)

R.M. MERRILL RICH HILL GOLD PLACERS

REFERENCES

YAVAPAI COUNTY  
T9N R4W Sec 6

BLM Mining District Sheet 286

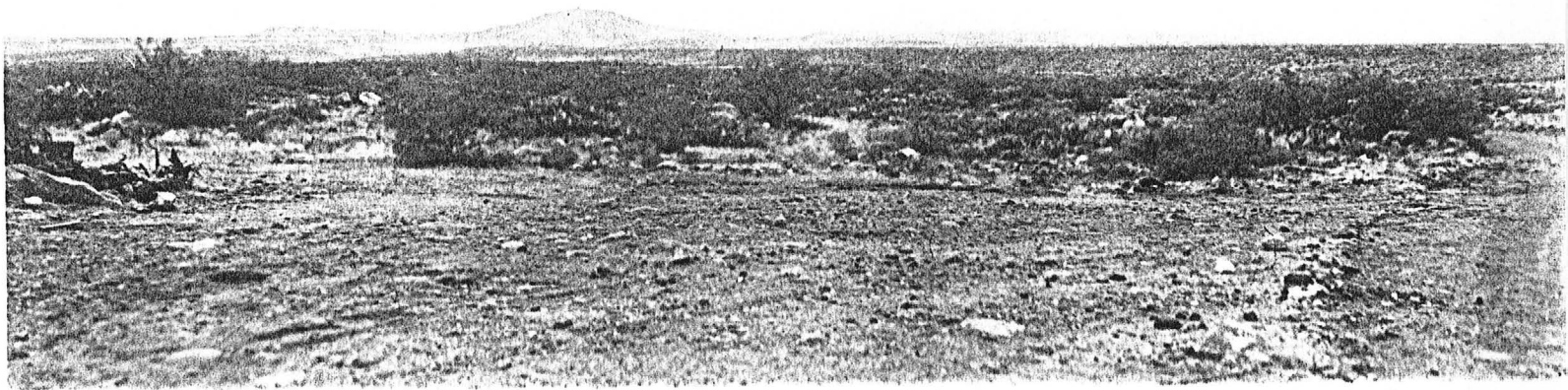
Weaver Gulch Gold Property file

Rich Hill files

MILS Sheet sequence number 0040251570

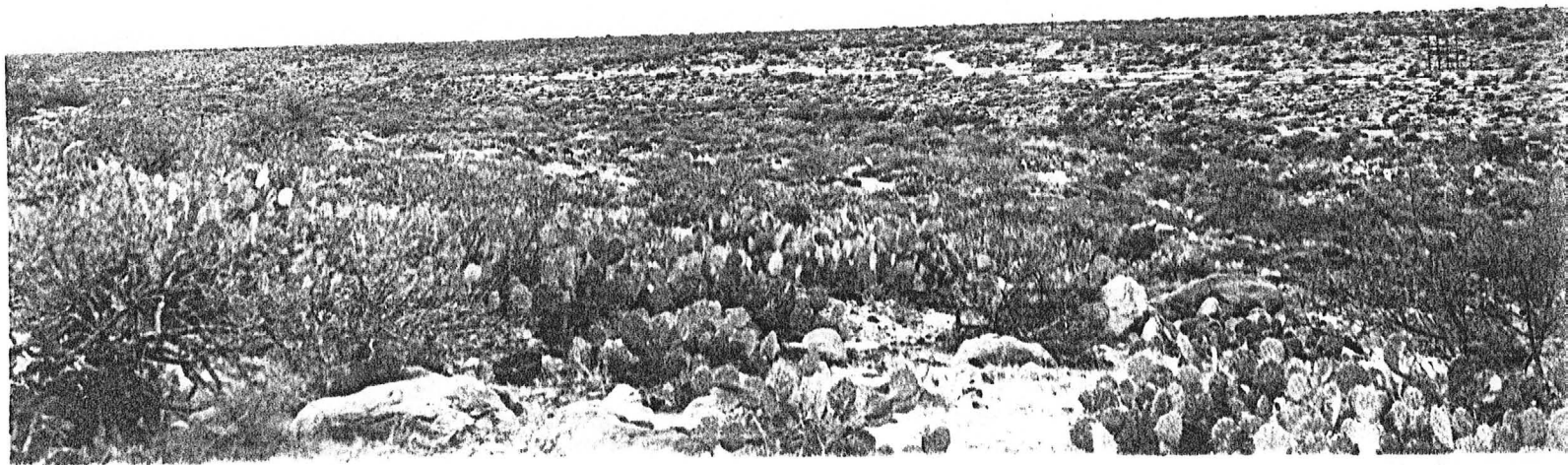
*Adm m r photos*





A-122-2

C-1950



A-122-1

C-1950

See W Mc Donald  
comp

Claims 2000 acres  
on main creek  
opposite ditch.

never did any work.  
not in last year.

Patented  
Cayuse claims from  
Jack Siem  
Bill Pasitt, Congress.

now has patent as well  
holding

Merrill lawyer  
is Neil Clark.

Mr - Fita posses  
150' depth in the rock  
in left hand ground  
Mike Mc Coughran  
Glendale  
has lot of water

Signs ties between

Gillich and Merrill

Gillich runs up  
Warren Creek

school section - 10  
below

S. 32 T 10 N R 4 W

S 5 T 9 N R 4 W

Merrill

---

Tom Warren

running ~~the~~ back claim

Mill Ave

Sturlish Ave

F. Gillich  
1336 W Taylor

Lyons Gold Min. Co.  
2 1/2 Claims Pat  
Bauer Pros  
L.A.

Marill sent  
of Lyons  
sent Mr. Haskels  
Octave

4 Patented  
v a

Marill claims here  
on Octave dump  
has water rights

Wacy Hammond agent  
in French N. D.

This should be titled

R. M. Merrill Rich Hill gold Placers

(Companion)

copy for H. Merrill Placer

Weaver Gold Placers, Inc. and sketch reference

W. D. Merrill patented placer claims (4)

and the property description for identity first part of the

letter 6/25/64 should be in the file along with name

of Edward S. Holten, 3015 Carle, An. L.A.



Merrill Placers

6/30/64

Merrill Placers

United Placer Industries 12/27/61 T.L. visit

± 4 mi S of Octave in Weaver Cr. wash area

Geraldine mach running 2 shifts @ 35 yds/hr. No reliable figures

Wet ground making poor recovery. "Geraldine" machine

T.L. 8/1/61

U.P.I., Inc. recently took over Liz-Dor Corp. 7000 A± in Weaver Cr. area.

See E+M J. Aug. 1961, P 79.



Copy of Mine Owners Report covering property listed with  
Department of Mineral Resources has been furnished to -

- Ralph R. Langley, 1115 So. Hayworth Ave., Los Angeles, Calif.
- George A. Macready, 6720 So. Victoria Ave., Los Angeles, Calif.
- J. S. Manning, 639 E. 38th St., Los Angeles, California.

DEPARTMENT OF MINERAL RESOURCES  
J. E. Coupal, Director

MM-23 Grant H. Merrill, 1326 W. Polk St., Phoenix, Arizona

Your name and address has been furnished to -

Harry E. Rose, 623 Court St., Los Angeles, California

who has made inquiry for the same with reference to mining property listed with the Department of Mineral Resources.

DEPARTMENT OF MINERAL RESOURCES

J. S. Coupal, Director

MM-23 MERRILL PLACERS, Grant H. Merrill, 1326 W. Polk, Phoenix

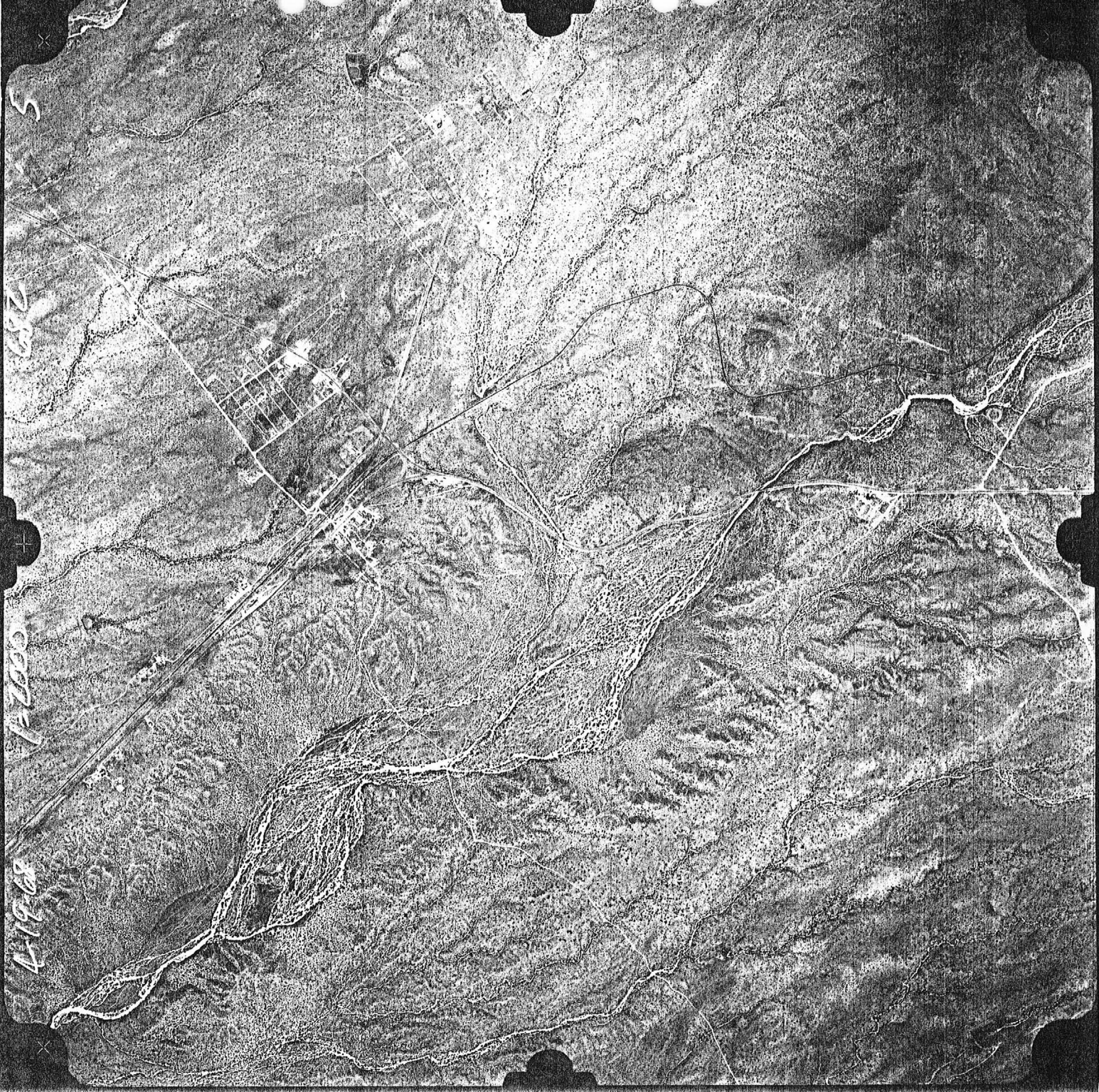
Your name and address has been furnished to

Albert Poston, 3107 Brighton Ave., Los Angeles, Calif.

who has made inquiry for the same with reference to mining property listed with the Department of Mineral Resources.

DEPARTMENT OF MINERAL RESOURCES

J. S. Coupal, Director



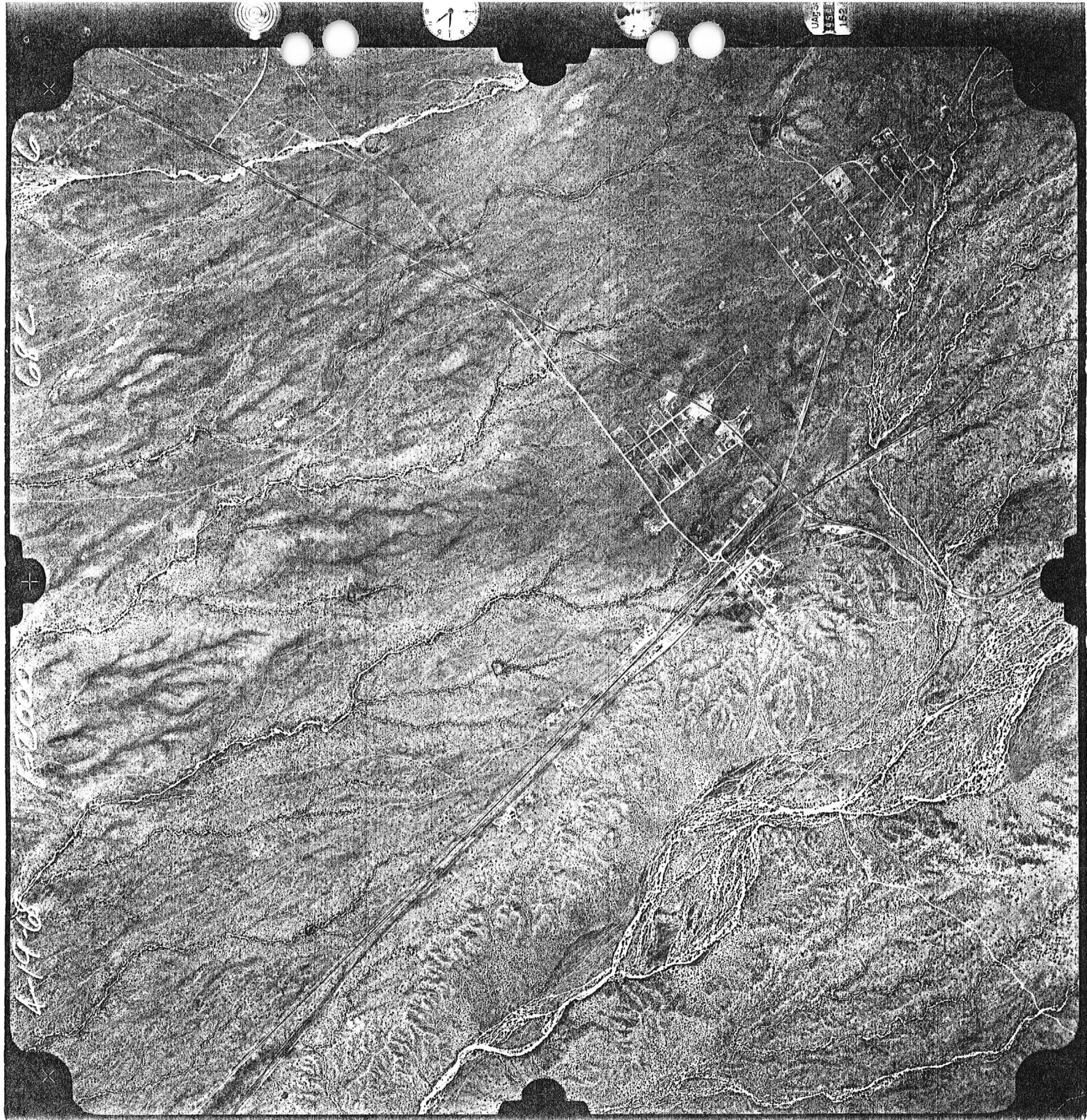
5

280

17000

4-19-68





66

262

15000

4-19-88

Pages  
151  
152





4-19-68

7000

66c

3



JAN 26  
9 53 AM  
152.6



**GOLD DOLLAR ESTATES**  
 A SUBDIVISION OF THE GOLD DOLLAR, THE GOLD DOLLAR NO 2 AND THE GOLD DOLLAR NO 3 MINING CLAIMS,  
 MINERALS SURVEY 336, MARSHFIELD MINING DISTRICT, SITUATE IN PORTIONS OF THE WEST HALF OF SECTION  
 26 AND THE EAST HALF OF SECTION 27 T14NPA COUNTY, ARIZONA

OWNER Ed HAYES  
 702-427-3173  
 P.O. Box 147

23-2

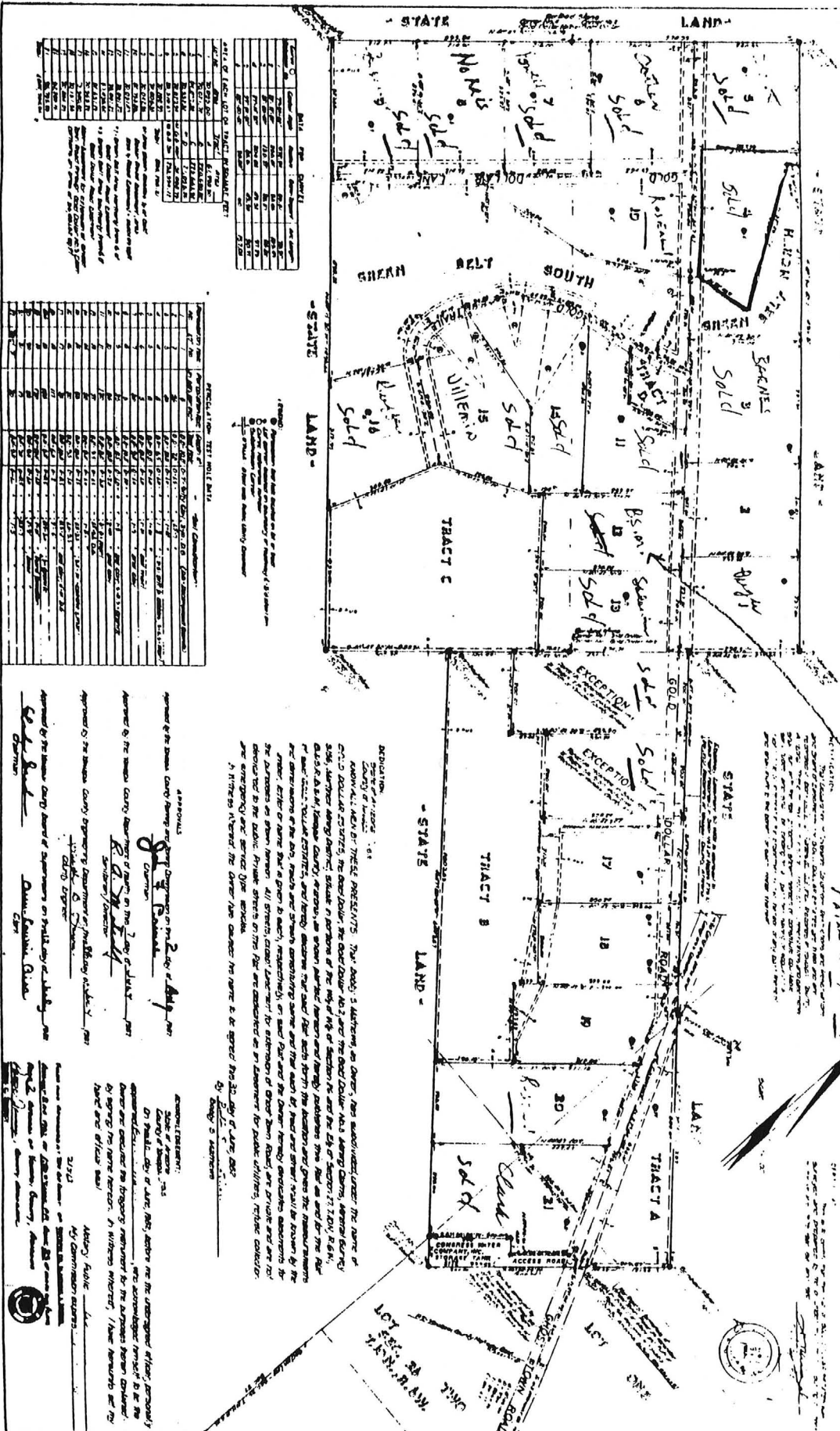


TABLE OF AREAS OF TRACTS, BY SQUARE FEET

TRACT	AREA (SQ. FT.)	PERCENTAGE OF TOTAL
1	1,234,567	12.34%
2	2,345,678	23.45%
3	3,456,789	34.56%
4	4,567,890	45.67%
5	5,678,901	56.78%
6	6,789,012	67.89%
7	7,890,123	78.90%
8	8,901,234	89.01%
9	9,012,345	90.12%
10	10,123,456	101.23%
11	11,234,567	112.34%
12	12,345,678	123.45%
13	13,456,789	134.56%
14	14,567,890	145.67%
15	15,678,901	156.78%
16	16,789,012	167.89%
17	17,890,123	178.90%
18	18,901,234	189.01%
19	19,012,345	190.12%
20	20,123,456	201.23%
21	21,234,567	212.34%
22	22,345,678	223.45%
23	23,456,789	234.56%
24	24,567,890	245.67%
25	25,678,901	256.78%
26	26,789,012	267.89%
27	27,890,123	278.90%
28	28,901,234	289.01%
29	29,012,345	290.12%
30	30,123,456	301.23%
31	31,234,567	312.34%
32	32,345,678	323.45%
33	33,456,789	334.56%
34	34,567,890	345.67%
35	35,678,901	356.78%
36	36,789,012	367.89%
37	37,890,123	378.90%
38	38,901,234	389.01%
39	39,012,345	390.12%
40	40,123,456	401.23%
41	41,234,567	412.34%
42	42,345,678	423.45%
43	43,456,789	434.56%
44	44,567,890	445.67%
45	45,678,901	456.78%
46	46,789,012	467.89%
47	47,890,123	478.90%
48	48,901,234	489.01%
49	49,012,345	490.12%
50	50,123,456	501.23%
51	51,234,567	512.34%
52	52,345,678	523.45%
53	53,456,789	534.56%
54	54,567,890	545.67%
55	55,678,901	556.78%
56	56,789,012	567.89%
57	57,890,123	578.90%
58	58,901,234	589.01%
59	59,012,345	590.12%
60	60,123,456	601.23%
61	61,234,567	612.34%
62	62,345,678	623.45%
63	63,456,789	634.56%
64	64,567,890	645.67%
65	65,678,901	656.78%
66	66,789,012	667.89%
67	67,890,123	678.90%
68	68,901,234	689.01%
69	69,012,345	690.12%
70	70,123,456	701.23%
71	71,234,567	712.34%
72	72,345,678	723.45%
73	73,456,789	734.56%
74	74,567,890	745.67%
75	75,678,901	756.78%
76	76,789,012	767.89%
77	77,890,123	778.90%
78	78,901,234	789.01%
79	79,012,345	790.12%
80	80,123,456	801.23%
81	81,234,567	812.34%
82	82,345,678	823.45%
83	83,456,789	834.56%
84	84,567,890	845.67%
85	85,678,901	856.78%
86	86,789,012	867.89%
87	87,890,123	878.90%
88	88,901,234	889.01%
89	89,012,345	890.12%
90	90,123,456	901.23%
91	91,234,567	912.34%
92	92,345,678	923.45%
93	93,456,789	934.56%
94	94,567,890	945.67%
95	95,678,901	956.78%
96	96,789,012	967.89%
97	97,890,123	978.90%
98	98,901,234	989.01%
99	99,012,345	990.12%
100	100,123,456	1001.23%

APPROVALS

NO.	NAME	DATE	OFFICE
1	Ed Hayes	10/1/23	Owner
2	John Doe	10/2/23	Surveyor
3	Jane Smith	10/3/23	Recorder
4	...	...	...

APPROVED BY THE BOARD OF SUPERVISORS OF THE COUNTY OF MARICOPA, ARIZONA, ON THIS 10th DAY OF OCTOBER, 2023.

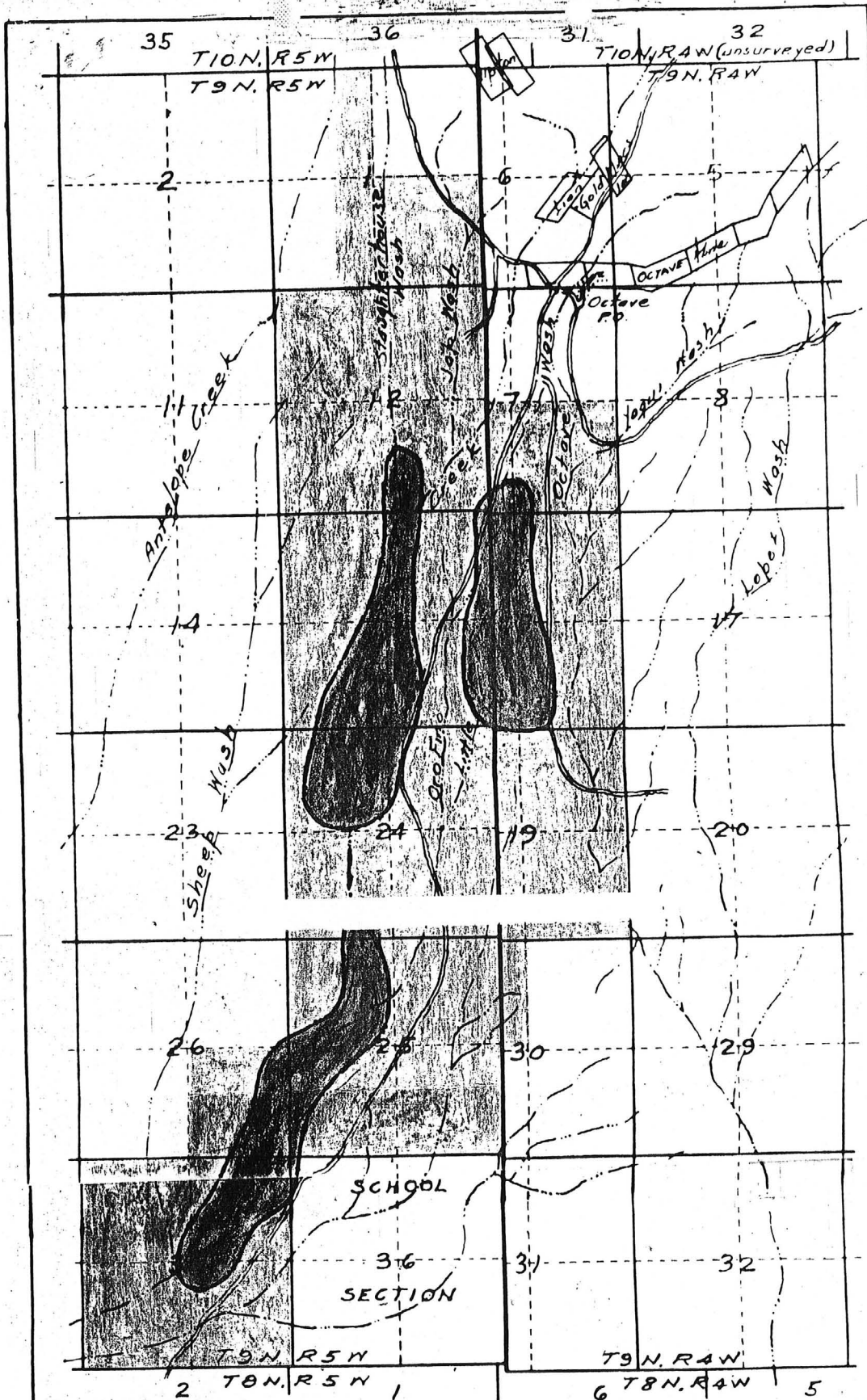
APPROVED BY THE MARICOPA COUNTY DEPARTMENT OF PUBLIC SAFETY, ON THIS 10th DAY OF OCTOBER, 2023.

APPROVED BY THE MARICOPA COUNTY DEPARTMENT OF PUBLIC SAFETY, ON THIS 10th DAY OF OCTOBER, 2023.

APPROVED BY THE MARICOPA COUNTY DEPARTMENT OF PUBLIC SAFETY, ON THIS 10th DAY OF OCTOBER, 2023.

APPROVED BY THE MARICOPA COUNTY DEPARTMENT OF PUBLIC SAFETY, ON THIS 10th DAY OF OCTOBER, 2023.

APPROVED BY THE MARICOPA COUNTY DEPARTMENT OF PUBLIC SAFETY, ON THIS 10th DAY OF OCTOBER, 2023.



Copied from  
TOWNSHIP MAPS  
OF THE  
DEPARTMENT OF THE INTERIOR  
GENERAL LAND OFFICE

Feb. 1, 1938 Carl G. Barth, Jr., E.M.

Generalized outline  
of  
Presumed dredgeable  
Areas

EXHIBIT "A"