



CONTACT INFORMATION

Mining Records Curator
Arizona Geological Survey
1520 West Adams St.
Phoenix, AZ 85007
602-771-1601
<http://www.azgs.az.gov>
inquiries@azgs.az.gov

The following file is part of the

Arizona Department of Mines and Mineral Resources Mining Collection

ACCESS STATEMENT

These digitized collections are accessible for purposes of education and research. We have indicated what we know about copyright and rights of privacy, publicity, or trademark. Due to the nature of archival collections, we are not always able to identify this information. We are eager to hear from any rights owners, so that we may obtain accurate information. Upon request, we will remove material from public view while we address a rights issue.

CONSTRAINTS STATEMENT

The Arizona Geological Survey does not claim to control all rights for all materials in its collection. These rights include, but are not limited to: copyright, privacy rights, and cultural protection rights. The User hereby assumes all responsibility for obtaining any rights to use the material in excess of "fair use."

The Survey makes no intellectual property claims to the products created by individual authors in the manuscript collections, except when the author deeded those rights to the Survey or when those authors were employed by the State of Arizona and created intellectual products as a function of their official duties. The Survey does maintain property rights to the physical and digital representations of the works.

QUALITY STATEMENT

The Arizona Geological Survey is not responsible for the accuracy of the records, information, or opinions that may be contained in the files. The Survey collects, catalogs, and archives data on mineral properties regardless of its views of the veracity or accuracy of those data.

PRINTED: 03/06/2003

ARIZONA DEPARTMENT OF MINES AND MINERAL RESOURCES AZMILS DATA

PRIMARY NAME: MCKAY PROSPECT

ALTERNATE NAMES:

YUMA COUNTY MILS NUMBER: 51

LOCATION: TOWNSHIP 8 S RANGE 21 W SECTION 13 QUARTER NE
LATITUDE: N 32DEG 44MIN 25SEC LONGITUDE: W 114DEG 21MIN 39SEC
TOPO MAP NAME: LIGURTA - 7.5 MIN

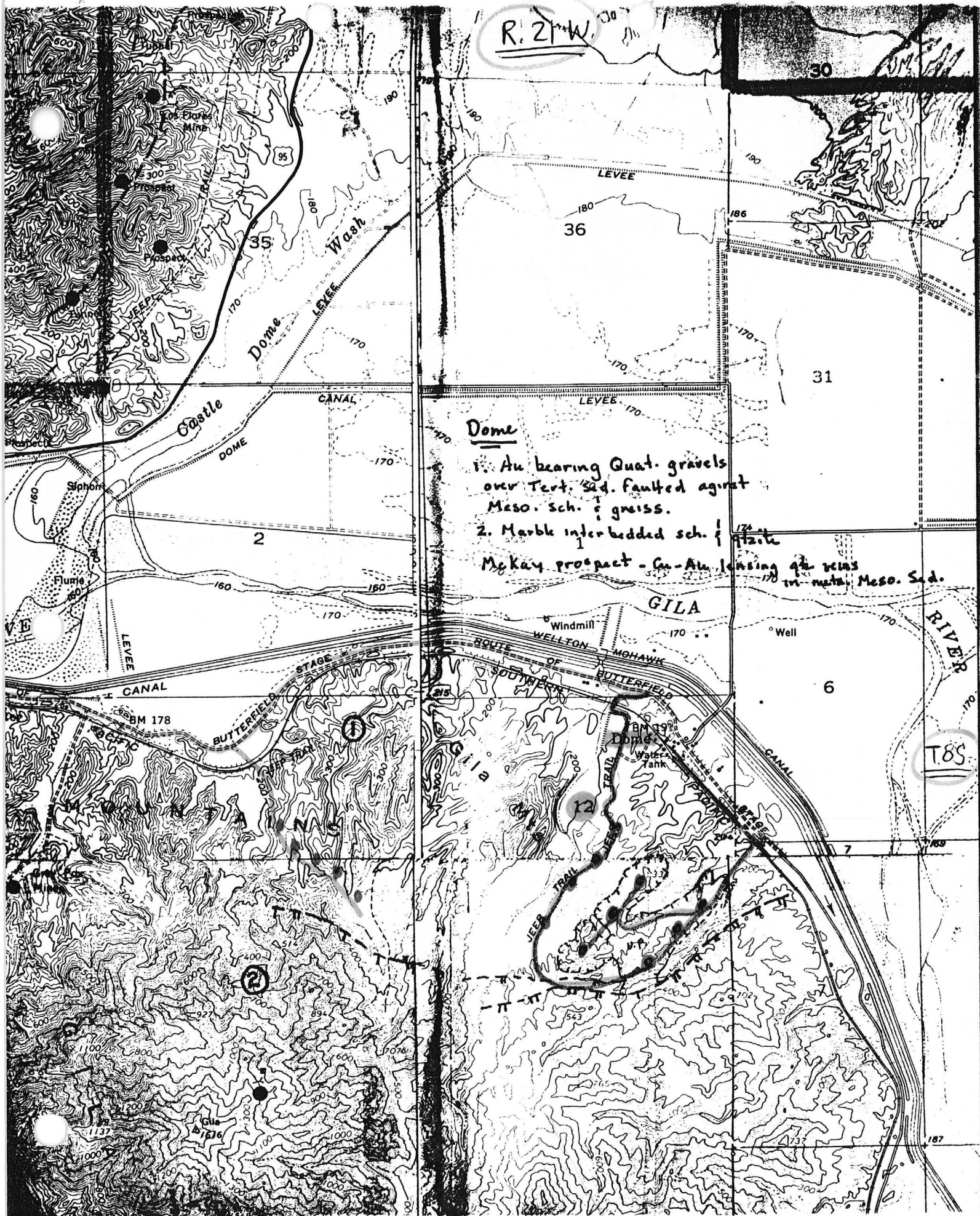
CURRENT STATUS: RAW PROSPECT

COMMODITY:
COPPER
GOLD LODE

BIBLIOGRAPHY:
KEITH, S.B., 1978, AZBM BULL. 192, P. 145
ADMMR MCKAY PROSPECT FILE

R. 21 W. 30

30



Dome

- 1. Au bearing Quat. gravels over Tert. Sed. faulted against Meso. sch. & gneiss.
 - 2. Marble interbedded sch. & gneiss.
- McKay prospect - Au - Ag lensing in meta. Meso. Sed.

Drill sites ●

YUMA Co., ARIZONA

Joe

MCKAY PROSPECT (New File)



Office of State Mine Inspector

STATE MINE INSPECTOR

705 West Wing, Capitol Building
Phoenix, Arizona 85007
602-255-5971

MAY 06 1985

NOTICE TO ARIZONA STATE MINE INSPECTOR

In compliance with Arizona Revised Statute Section 27-303* we are submitting this written notice to the Arizona State Mine Inspector (705 West Wing, Capitol Building, Phoenix, Arizona 85007) of our intent to start stop (please circle one) a mining operation.

COMPANY NAME Amoco Minerals Company

CHIEF OFFICER Kenneth Barr

COMPANY ADDRESS P.O. Box 3986, Englewood, Co. 80155

COMPANY TELEPHONE NUMBER (303) 740-5423

MINE OR PLANT NAME N/A: exploration drilling only - Dome Project

MINE OR PLANT LOCATION (including county and nearest town, as well as directions for locating by vehicle)

sections 11 & 12, T. 8 S., R. 21 W., Yuma County; about 18 miles west of Yuma via highway 95 and the Butterfield Stage road, and 1/2 mile south of old town of Dome (see map).

TYPE OF OPERATION Mineral exploration drilling PRINCIPAL PRODUCT to explore for: gold

STARTING DATE June 1, 1985 CLOSING DATE July 1, 1985

DURATION OF OPERATION 1 month

PERSON SENDING THIS NOTICE William D. Burton

TITLE OF PERSON SENDING THIS NOTICE Regional Geologist

DATE NOTICE SENT TO STATE MINE INSPECTOR May 7, 1985

*A.R.S. Section 27-303 NOTIFICATION TO INSPECTOR OF BEGINNING OR SUSPENDING OPERATIONS: When mining operations are commenced in any mine or when operations therein are permanently suspended, the operator shall give written notice to the inspector at his office prior to commencement or suspension of operations.